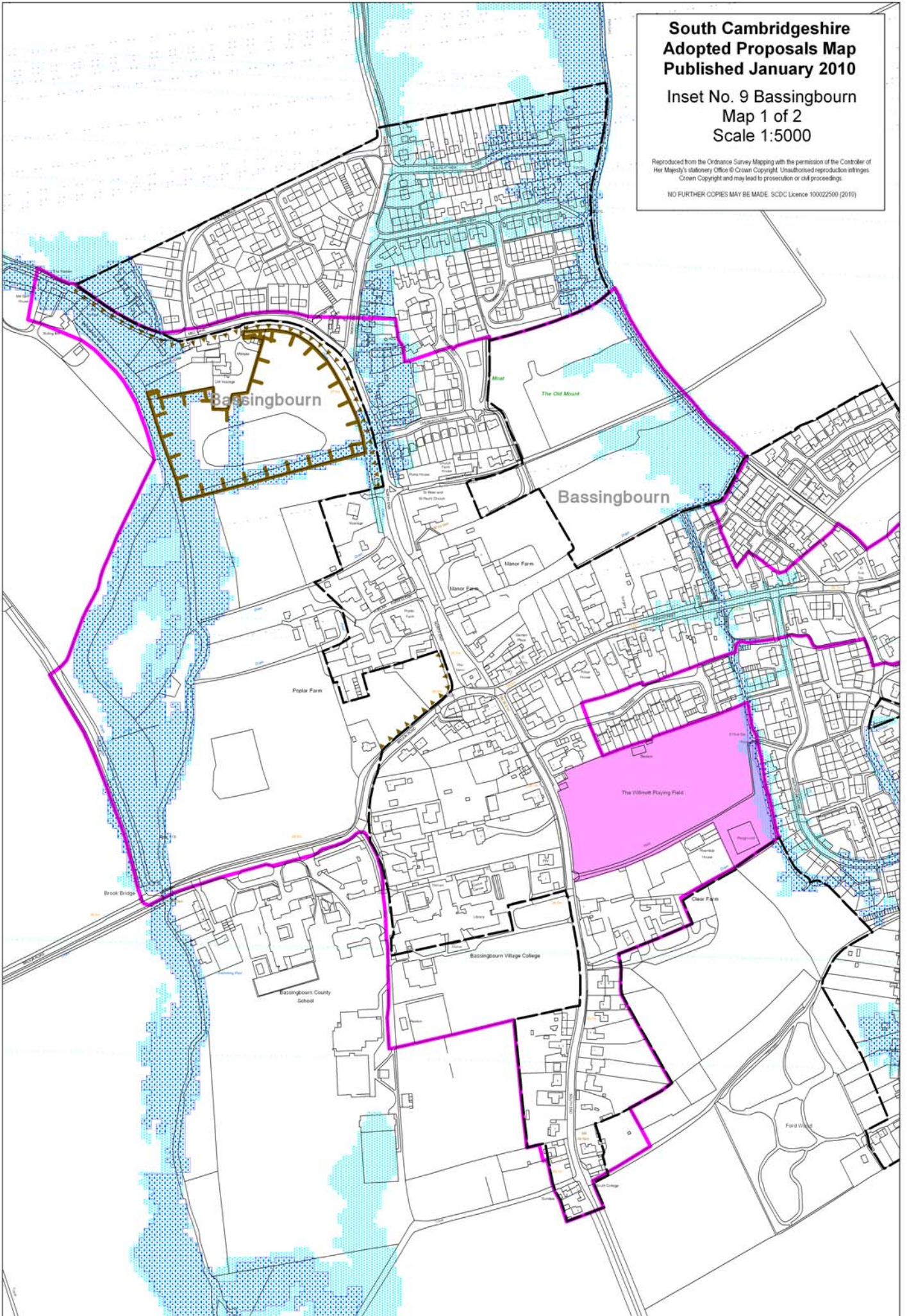


**South Cambridgeshire  
Adopted Proposals Map  
Published January 2010**

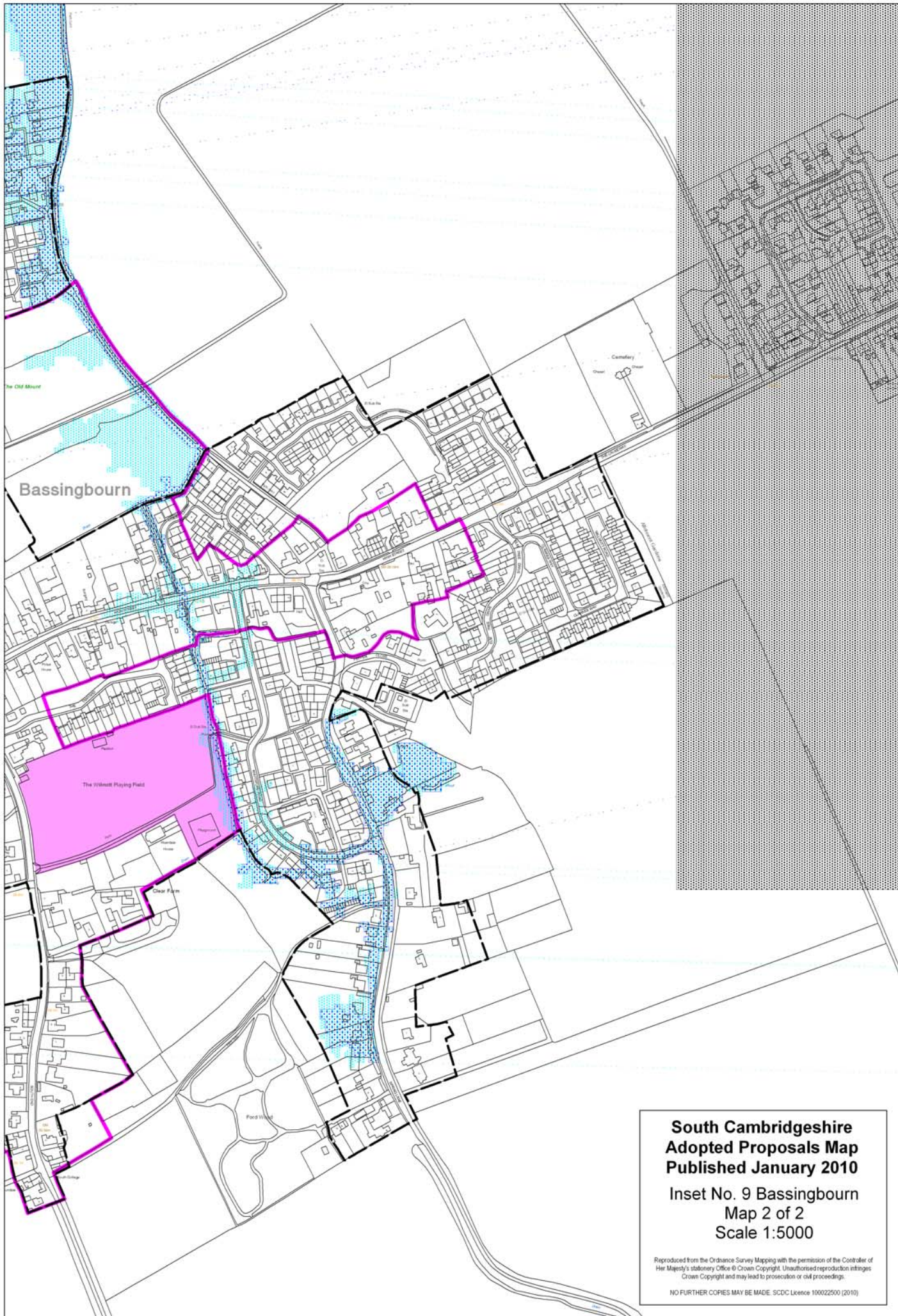
**Inset No. 9 Bassingbourn  
Map 1 of 2  
Scale 1:5000**

Reproduced from the Ordnance Survey Mapping with the permission of the Controller of Her Majesty's Stationery Office © Crown Copyright. Unauthorised reproduction infringes Crown Copyright and may lead to prosecution or civil proceedings.

NO FURTHER COPIES MAY BE MADE. SCDC Licence 100022500 (2010)







**South Cambridgeshire  
Adopted Proposals Map  
Published January 2010**

**Inset No. 9 Bassingbourn  
Map 2 of 2  
Scale 1:5000**

Reproduced from the Ordnance Survey Mapping with the permission of the Controller of Her Majesty's Stationery Office © Crown Copyright. Unauthorised reproduction infringes Crown Copyright and may lead to prosecution or civil proceedings.

NO FURTHER COPIES MAY BE MADE. SDCS Licence 100022500 (2010)