

Harcamlow Way PRoW long distance footpath

River Cam

Cambridge North Railway Station/ Hotel

Fen Rivers Way PRoW long distance footpath

Approximate extent of site

APPROXIMATE EXTENT OF VISIBLE DEVELOPMENT



NODE VP1
Photograph copied from the Evidence of Nigel Wakefield: Vu City model referenced into the photograph using reference points provided by built form.

SLR BROOKGATE LIMITED
PHOTOGRAPHY CAMBRIDGE NORTH
 WINTER PHOTOGRAPHY REBUTTAL EVIDENCE OF JEREMY SMITH
 JOB NO: 403.064598.00001
 DATE: MAY 2023 DRAWN: DB CHECKED: JS APPROVED: JS
 NODE VP1 DRAWING NO: CN-056



NODE VP1: Model View

SLR BROOKGATE LIMITED
PHOTOGRAPHY CAMBRIDGE NORTH
 MODEL VIEW REBUTTAL EVIDENCE OF JEREMY SMITH
 JOB NO: 403.064598.00001
 DATE: MAY 2023 DRAWN: DB CHECKED: JS APPROVED: JS
 NODE VP1 DRAWING NO: CN-057

Harcamlow Way PRoW
long distance footpath

River Cam

Cambridge North Railway Station/ Hotel

footpath

Approximate extent of site

APPROXIMATE EXTENT OF VISIBLE DEVELOPMENT



NODE VP2
Photograph copied from the Evidence of Nigel Wakefield: Vu City model
referenced into the photograph using reference points provided by built form.

PHOTOGRAPHY
WINTER PHOTOGRAPHY

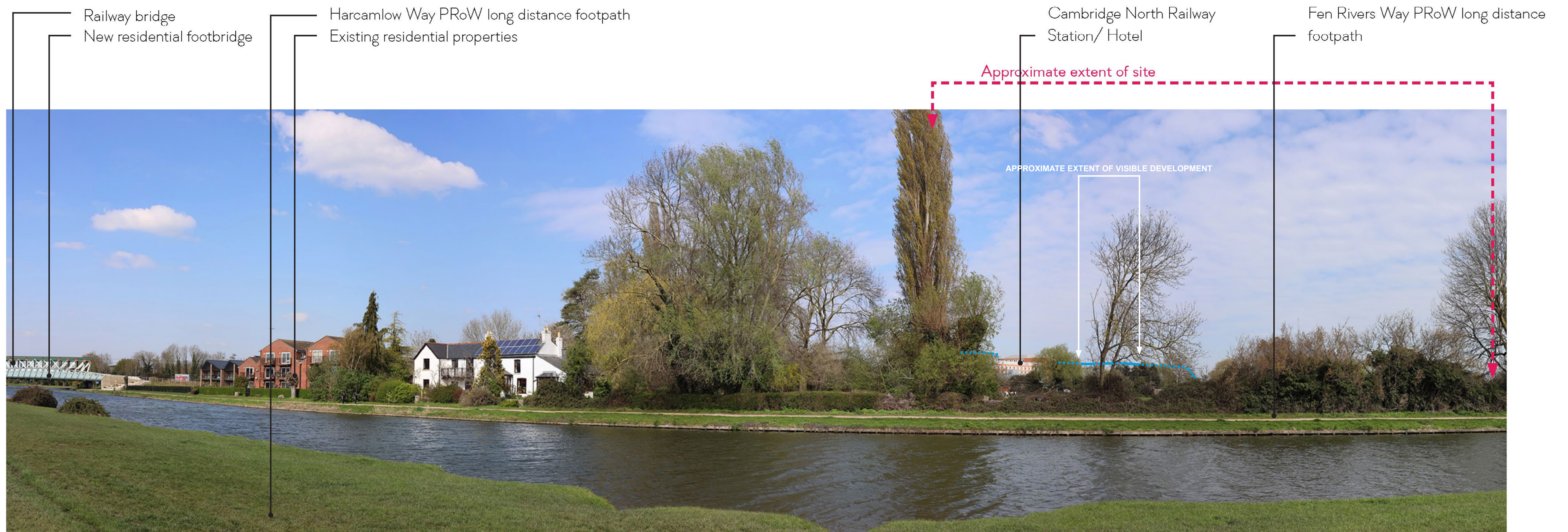
SLR BROOKGATE LIMITED
CAMBRIDGE NORTH
REBUTTAL EVIDENCE OF JEREMY SMITH
JOB NO: 403.064598.00001
DATE: MAY 2023 DRAWN: DB CHECKED: JS APPROVED: JS
NODE VP2 DRAWING NO: CN-058



NODE VP2: Model View

PHOTOGRAPHY
MODEL VIEW

SLR BROOKGATE LIMITED
CAMBRIDGE NORTH
REBUTTAL EVIDENCE OF JEREMY SMITH
JOB NO: 403.064598.00001
DATE: MAY 2023 DRAWN: DB CHECKED: JS APPROVED: JS
NODE VP2 DRAWING NO: CN-058



NODE VP3
 Photograph copied from the Evidence of Nigel Wakefield: Vu City model
 referenced into the photograph using reference points provided by built form.

PHOTOGRAPHY
 WINTER PHOTOGRAPHY

SLR BROOKGATE LIMITED
 CAMBRIDGE NORTH
 REBUTTAL EVIDENCE OF JEREMY SMITH
 JOB NO: 403.064598.00001
 DATE: MAY 2023 DRAWN: DB CHECKED: JS APPROVED: JS
NODE VP3 DRAWING NO: CN-060



NODE VP3: Model View

PHOTOGRAPHY
 MODEL VIEW

SLR BROOKGATE LIMITED
 CAMBRIDGE NORTH
 REBUTTAL EVIDENCE OF JEREMY SMITH
 JOB NO: 403.064598.00001
 DATE: MAY 2023 DRAWN: DB CHECKED: JS APPROVED: JS
NODE VP3 DRAWING NO: CN-061

Fairham Road

New development associated with Cambridge North

Approximate extent of site

APPROXIMATE EXTENT OF VISIBLE DEVELOPMENT



NODE VP8
Photograph copied from the Evidence of Nigel Wakefield: Vu City model
referenced into the photograph using reference points provided by built form.



NODE VP8: Model View

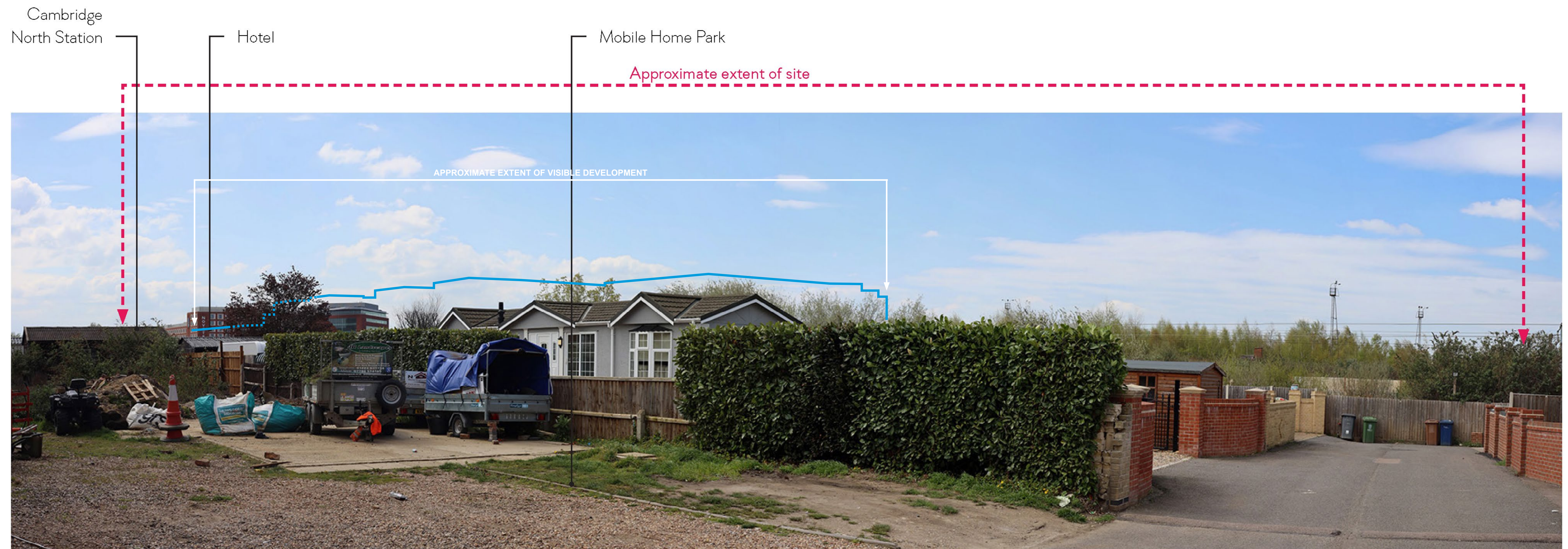


NODE VP9
 Photograph copied from the Evidence of Nigel Wakefield: Vu City model
 referenced into the photograph using reference points provided by built form.



NODE VP9: Model View

© This drawing and its content are the copyright of SLR Consulting Ltd and may not be reproduced or amended except by prior written permission. SLR Consulting Ltd accepts no liability for any amendments made by other persons.



NODE VP17
 Photograph copied from the Evidence of Nigel Wakefield: Vu City model
 referenced into the photograph using reference points provided by built form.

PHOTOGRAPHY
 WINTER PHOTOGRAPHY

SLR BROOKGATE LIMITED
 CAMBRIDGE NORTH
 REBUTTAL EVIDENCE OF JEREMY SMITH
 JOB NO: 403.064598.00001
 DATE: MAY 2023 DRAWN: DB CHECKED: JS APPROVED: JS
NODE VP17 DRAWING NO: CN-066



NODE VP17: Model View

PHOTOGRAPHY
 MODEL VIEW

SLR BROOKGATE LIMITED
 CAMBRIDGE NORTH
 REBUTTAL EVIDENCE OF JEREMY SMITH
 JOB NO: 403.064598.00001
 DATE: MAY 2023 DRAWN: DB CHECKED: JS APPROVED: JS
NODE VP17 DRAWING NO: CN-067

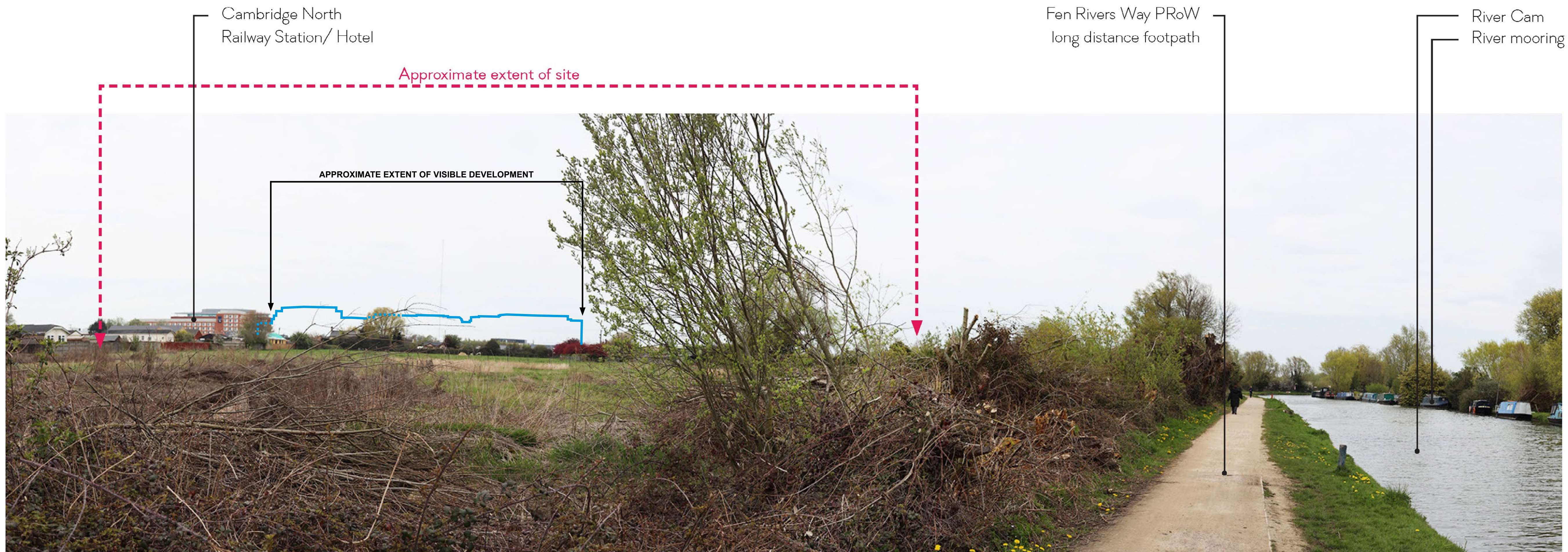


NODE VP19
 Photograph copied from the Evidence of Nigel Wakefield: Vu City model
 referenced into the photograph using reference points provided by built form.



NODE VP19: Model View

© This drawing and its content are the copyright of SLR Consulting Ltd and may not be reproduced or amended except by prior written permission. SLR Consulting Ltd accepts no liability for any amendments made by other persons.



NODE VP21
 Photograph copied from the Evidence of Nigel Wakefield: Vu City model
 referenced into the photograph using reference points provided by built form.

PHOTOGRAPHY
 WINTER PHOTOGRAPHY

SLR BROOKGATE LIMITED
 CAMBRIDGE NORTH
 REBUTTAL EVIDENCE OF JEREMY SMITH
 JOB NO: 403.064598.00001
 DATE: MAY 2023 DRAWN: DB CHECKED: JS APPROVED: JS
NODE VP21 DRAWING NO: CN-070



NODE VP21: Model View

PHOTOGRAPHY
 MODEL VIEW

SLR BROOKGATE LIMITED
 CAMBRIDGE NORTH
 REBUTTAL EVIDENCE OF JEREMY SMITH
 JOB NO: 403.064598.00001
 DATE: MAY 2023 DRAWN: DB CHECKED: JS APPROVED: JS
NODE VP21 DRAWING NO: CN-071

Fen Rivers Way PRoW
long distance footpath

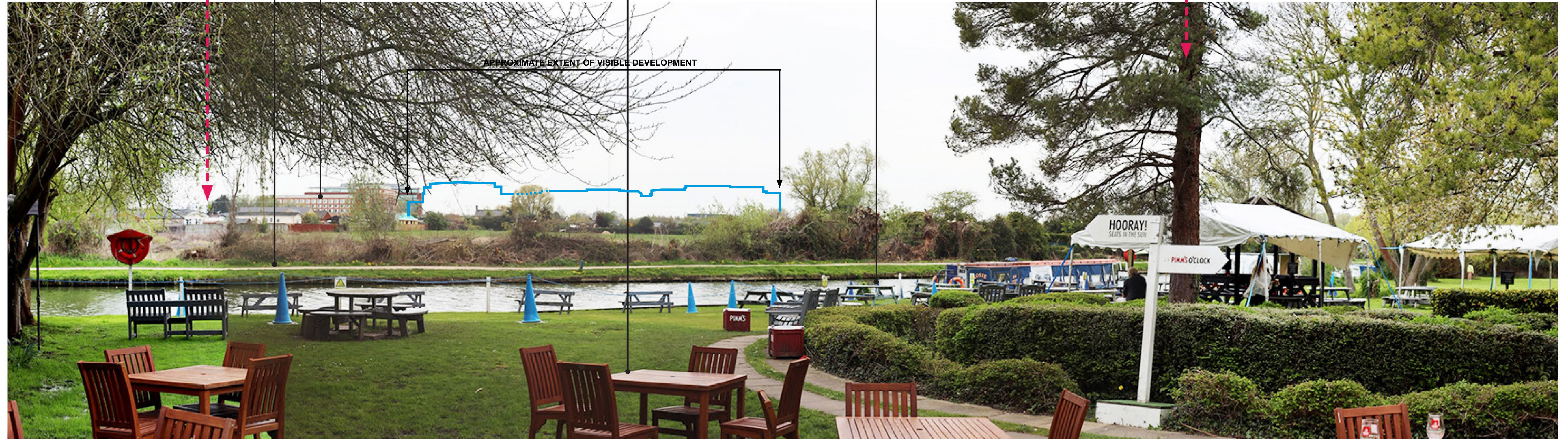
Cambridge North
Railway Station/ Hotel

Public Beer Garden to
Plough Inn

River Cam

Approximate extent of site

APPROXIMATE EXTENT OF VISIBLE DEVELOPMENT



NODE VP22
Photograph copied from the Evidence of Nigel Wakefield: Vu City model
referenced into the photograph using reference points provided by built form.

PHOTOGRAPHY
WINTER PHOTOGRAPHY

SLR BROOKGATE LIMITED
CAMBRIDGE NORTH
REBUTTAL EVIDENCE OF JEREMY SMITH
JOB NO: 403.064598.00001
DATE: MAY 2023 DRAWN: DB CHECKED: JS APPROVED: JS
NODE VP22 DRAWING NO: CN-072



NODE VP22: Model View

PHOTOGRAPHY
MODEL VIEW

SLR BROOKGATE LIMITED
CAMBRIDGE NORTH
REBUTTAL EVIDENCE OF JEREMY SMITH
JOB NO: 403.064598.00001
DATE: MAY 2023 DRAWN: DB CHECKED: JS APPROVED: JS
NODE VP22 DRAWING NO: CN-072



VIEWPOINT 1: VIEW FROM FOOTPATH ALONG CAMBRIDGESHIRE GUIDED BUSWAY LOOKING SOUTH EAST TOWARDS ST MARY'S FEN DITTON CHURCH GRADE II LISTED

PROJECTION: CYLINDRICAL
 ENLARGEMENT FACTOR: 96% AT A1
 VIEW AT COMFORTABLE ARM'S LENGTH
 TO BE PRINTED AT A1 FOR ASSESSMENT
 VIEWING BOX INCORPORATES UP TO 90° HORIZONTAL FIELD OF VIEW

DATE AND TIME OF PHOTOGRAPHY: 16/05/2023 AT 09:37
 MAKE AND MODEL OF CAMERA: NIKON D750
 MAKE AND FOCAL LENGTH OF LENS: 50MM
 DIRECTION OF VIEW: SOUTH-EAST

SLR BROOKGATE LIMITED
TYPE 1 PHOTOGRAPHY
 CAMBRIDGE NORTH
 REBUTTAL EVIDENCE OF JEREMY SMITH
 KEY VIEWPOINT PHOTOGRAPHY
 JOB NO: 423 04458 00001
 DATE: MAY 2023 DRAWN: DB CHECKED: JS APPROVED: JS
VIEWPOINT 1 DRAWING NO: CN-074



VIEWPOINT 2: VIEW FROM ALONG FOOTPATH 85/6 FEN DITTON LOOKING SOUTH-WEST TOWARDS ST GEORGE'S CHURCH CHESTERTON LISTED GRADE II

PROJECTION: CYLINDRICAL
 ENLARGEMENT FACTOR: 96% AT A1
 VIEW AT COMFORTABLE ARM'S LENGTH
 TO BE PRINTED AT A1 FOR ASSESSMENT
 VIEWING BOX INCORPORATES UP TO 90° HORIZONTAL FIELD OF VIEW

DATE AND TIME OF PHOTOGRAPHY: 16/05/2023 AT 11:13
 MAKE AND MODEL OF CAMERA: NIKON D750
 MAKE AND FOCAL LENGTH OF LENS: 50MM
 DIRECTION OF VIEW: SOUTH-WEST

SLR BROOKGATE LIMITED
TYPE 1 PHOTOGRAPHY
 CAMBRIDGE NORTH
 REBUTTAL EVIDENCE OF JEREMY SMITH
 KEY VIEWPOINT PHOTOGRAPHY
 JOB NO: 423 04458 00001
 DATE: MAY 2023 DRAWN: DB CHECKED: JS APPROVED: JS
VIEWPOINT 2 DRAWING NO: CN-075