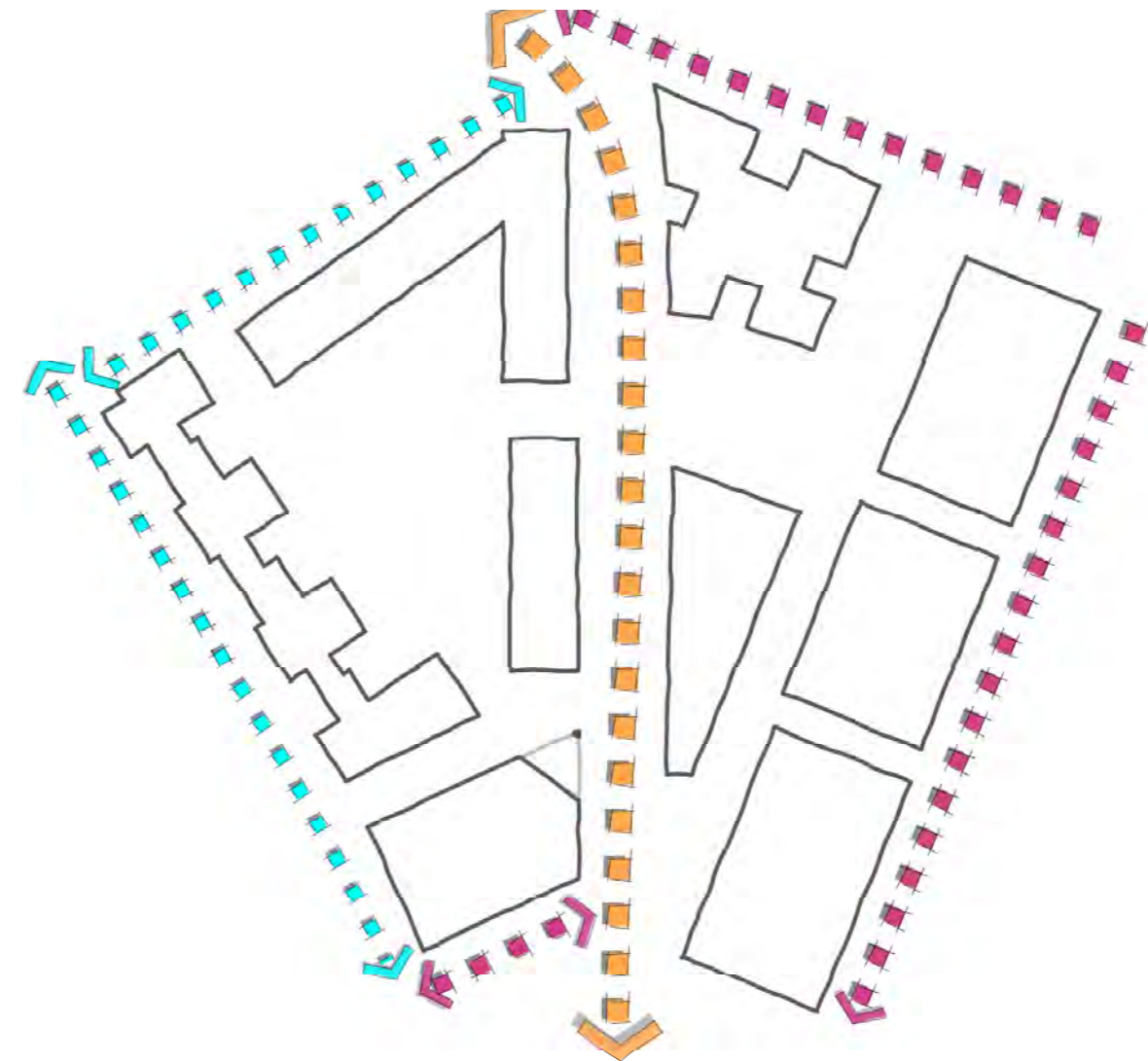


6. Streets

LANDSCAPE AND OPEN SPACE STREET STRATEGY

HIERARCHY

- A language of tree patterns and materials that delineate a street hierarchy
- The primary street, Milton Avenue, is a wide avenue marked by large growing London Plane and active frontages. Cycle lane, pedestrian pavement and 'spillout pavement' are clearly defined on the west side with rain gardens lining the east side of this key vehicular street;
- Secondary streets are lined on at least one side with large growing species and comfortable pedestrian space alongside vehicular movement, including garage entrances;
- Tertiary streets enclose the residential quarter. Street-facing courtyards and parking bays offer blue badge, residential and drop off/service bay parking.
- Traffic calming measures are employed such as raised tables; and buildouts on the guided busway route.
- Cycle and pedestrian crossing are defined by distinctive paving.



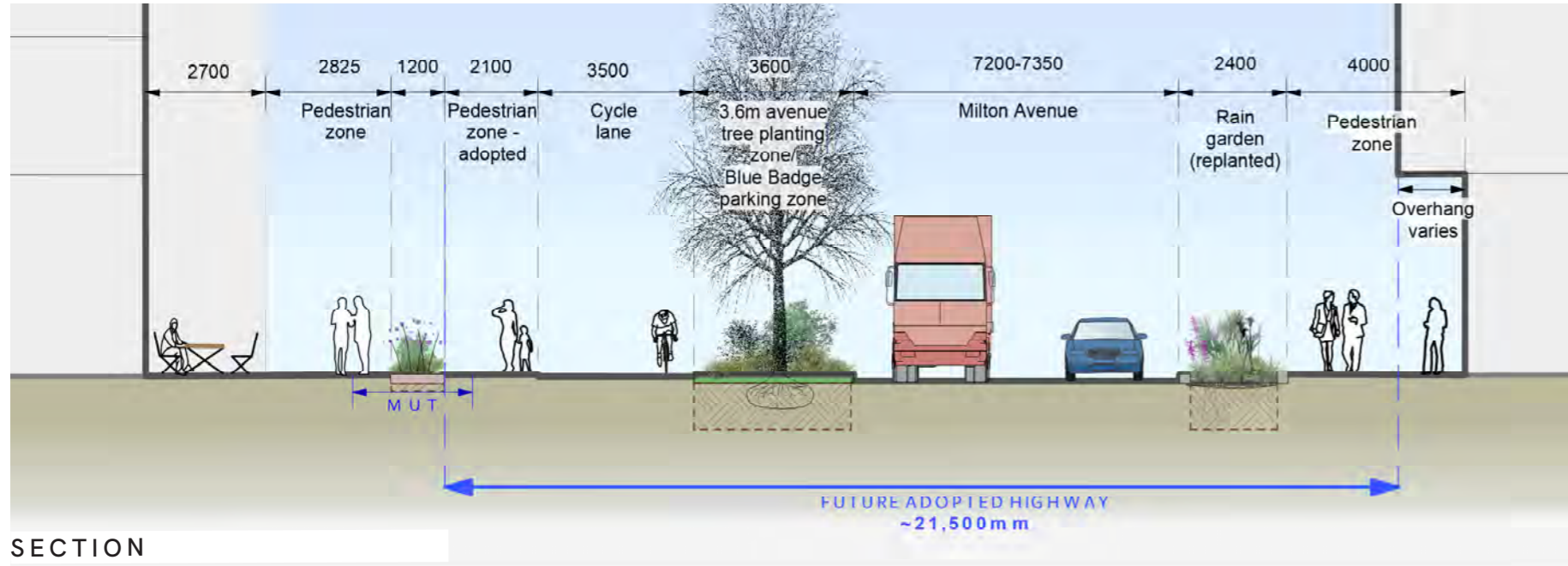
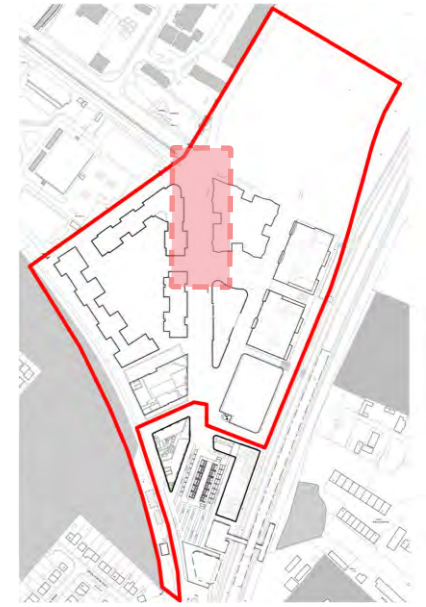
Streets key

- ■ ■ Primary routes
- ■ ■ Secondary routes
- ■ ■ Tertiary routes

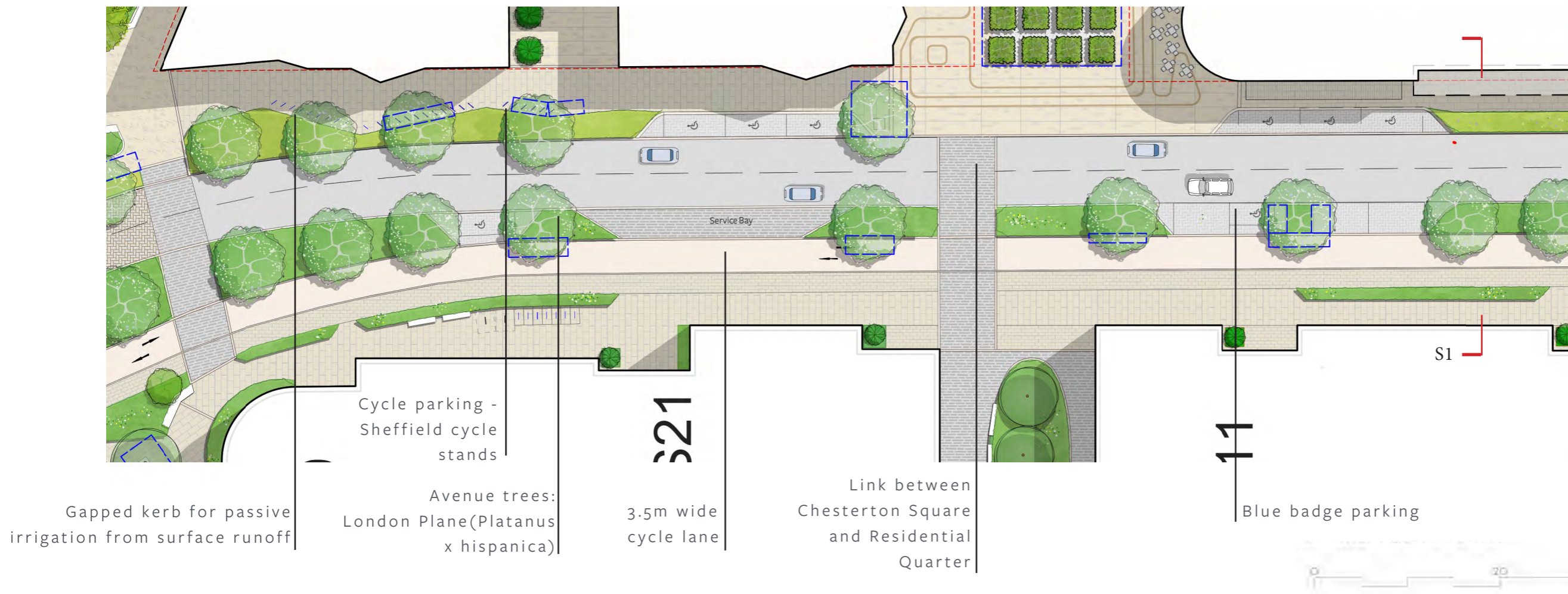


LANDSCAPE AND OPEN SPACE PRIMARY STREET: MILTON AVENUE

This primary avenue is lined with London Plane, on both sides on the northern end and on one side on the southern end, creating a character of a substantial boulevard. Pedestrian crossings and pavement spaces are key, with planting on both sides and the cycle lane and a pedestrian walkway kept free of the busy frontages and activities of the active street. Planting is loose and naturalistic, setting the theme of the Open Mosaic Habitat that influences the site.

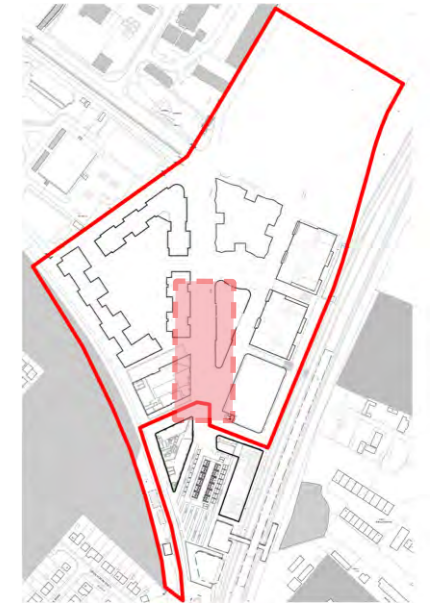


SECTION



LANDSCAPE AND OPEN SPACE

PRIMARY STREET: MILTON AVENUE



Avenue trees:
London Plane
(Platanus x
hispanica)

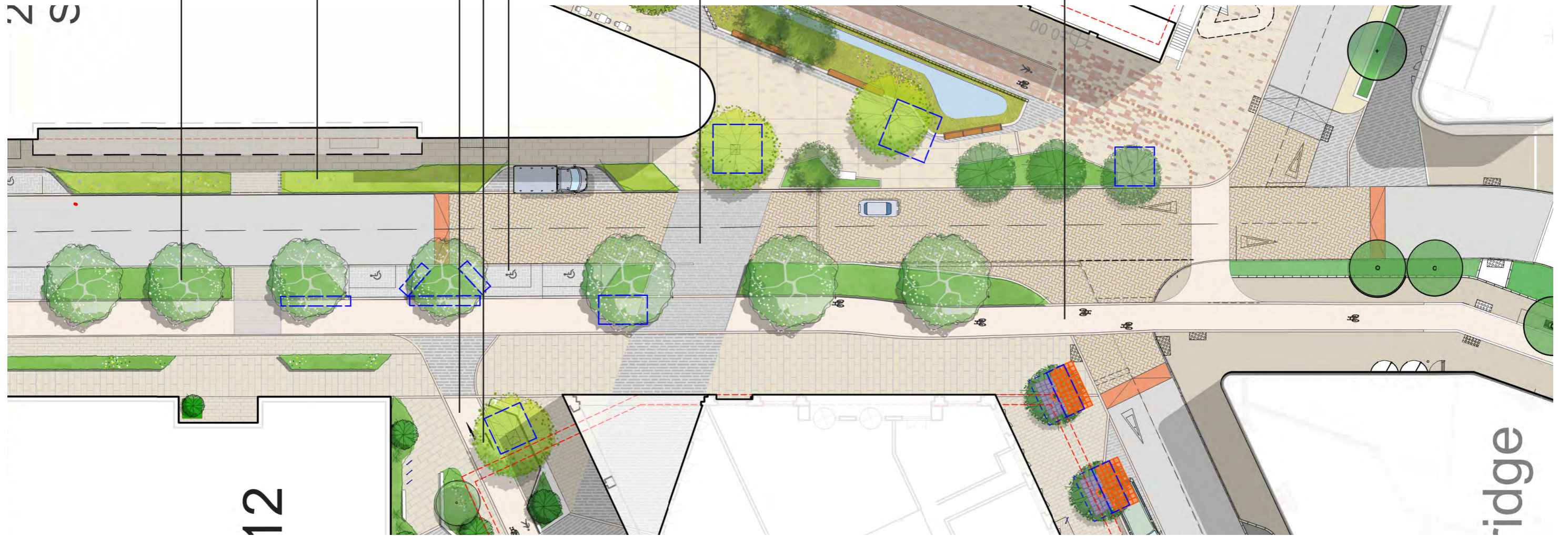
Rain garden
planting

Pocket park
3m cycle
lane

Blue badge
parking

Wide pedestrian crossing
with visual link between
Piazza and Residential
Quarter, through open
'portico of 1 Milton Avenue

3.5m wide cycle
lane



LANDSCAPE AND OPEN SPACE SECONDARY STREETS: COWLEY ROAD NORTH

This road serves as an interface between the Wild Park and the urban office buildings to the immediate south. Seating and walking spaces are deep, and there is room for a good depth of planting as well as seating opportunities.

