

BOUNDARY TREATMENT

- Feature Brick Wall**
Min. 1.8 m high, 210 thick exposed brick wall, 600 (L) x 280 (w), 75 thick concrete coping, concrete footing to Engineer's specifications. Matching entrance gates to be installed where applicable
- Fence Type 1 - Fence Between Houses**
Close board fence, 1.8m high, taper sawn, Timber support posts 125 x 100mm, 2.7 m long, with min 3 arris rails, 2.4 m c/c fixed in ground to Manufacturer's specification. Matching entrance gates to be installed where applicable
- Fence Type 1a - Traditional Palisade Fencing**, 1.2m high, with pointed pales. Matching entrance gates to be installed where applicable
- Fence Type 2 - Fence around Play Area**
1.1 m high, bow top railing (as per RoSPA guidelines), powder coated black, fixing as per manufactures details. Supplier: HERAS or similar approved, Product: Tangorail TR800 play
- Fence Type 3 - Security fence around Sub-station**
Galvanised steel wire mesh fence and gate, 1.8m high, powder coated black
- Fence Type 4 - Post and wire fence**, 1.1m high (along the southern boundary of the woodland)
- Railing Type 1 - Timber Railing to Deck and Boardwalk**, Bespoke timber fence 1.10 m high. Posts at 2.4m c/c fixed in concrete.
- Play Area Single Leaf Gate**
1.1 m high, 1.5m wide gate with self-closing mechanism (as per RoSPA guidelines). Colour: Gate - powder coated black, gate posts - powder coated yellow. Supplier: Heras or similar approved, Product: Tangorail TR800 play
- Play Area Double Leaf Gate**
1.1 m high, 3m wide gate with drop bolt and self-closing mechanism (as per RoSPA guidelines). Colour: Gates - powder coated black, gate posts - powder coated yellow. Supplier: Heras or similar approved, Product: Tangorail TR800 play

Movement of Hedgehogs
Free movement of hedgehogs between private gardens and public open space to be facilitated through the provision of openings between them (130mm x 130mm) at ground level. Openings to be provided in every property with Fence type 1 and/or Feature brick wall. To prevent residents from blocking up the openings inadvertently, discreet signage should be provided above the openings to identify the holes as 'hedgehog highways'.

BRIDGES

- Vehicular Bridge** (To Engineers details and specification)
- Foot Bridge** (For design intent refer to DAS, For detail ref. to TRF-CBA-1-GF-M2-L-8000)
- Indicative location of control chamber to Engineer's details
- Indicative location of below ground crates (as per Engineer's details and specifications)
- Indicative location of headwall and culvert and specifications to Engineer's details

Note: Attenuation ponds to include bio retentive topsoil to control water flow rates, and reduce the environmental impact of flooding.

- SS - Stepping Stones/boulder trail circle**, gabbro boulder, 450mmL x 300mmW x 200mmH, 400mmL x 250mmW x 150mm H
- FS - Feature Stone**, gabbro boulder, approx. size 800L x 600W x 450mmH
- SCU - Sculpture**, animal-inspired stone or timber sculpture to be developed in liaison with local community
- SC - Seating Circle**, gabbro boulder, 800mmL x 600mmW x 450mmH
- PB - Play Boulders**, gabbro boulder, varying sizes 800mmL x 600mmW x 450mmH, 600mmL x 400mmW x 300mmH, 900mmL x 700mmW x 500mmH
- B1 - Bench B1** | Tiptree Seat | Supplier: Broxap | Product Code: BX14 4030-BP | Galvanized steel legs with treated softwood | Finish: Black powder coated for metal members & arm rests | Fixing: Root fixed as per manufacturer's specifications
- B2 - Proposed Bench** | Bespoke Bench | Fixing: As per manufacturer's specifications | For details ref. to drawing TRF-CBA-1-GF-M2-L-8300
- B3 - Stone Seats** Solid granite bench | 450mm high x 500mm wide x 1800mm long

KEY PLAN



This document should not be relied on or used in circumstances other than those for which it was prepared and for which Chris Blandford Associates was commissioned. Chris Blandford Associates accepts no responsibility for this document to any other party other than the person by whom it was commissioned.

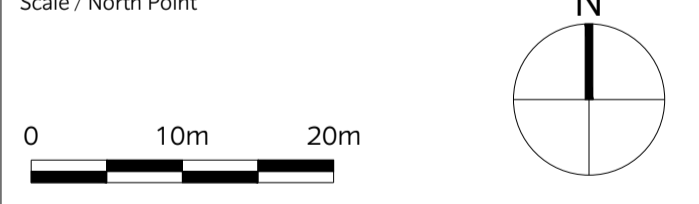
- KEY**
- Site boundary
 - Other Land Under Applicant's Control

- FINISHES**
- F1. Proposed Vehicular Tarmac Housing Estate Road**, To Engineer's specifications
Colour: Dark Grey
 - F2. Proposed Tarmac for Pedestrian Footpaths**
125mm Raised Footpath, To Engineer's specifications, Colour: Light Grey
 - F3. Proposed Paving Type 1 - Shared surface**, Permeable concrete block paving, Size: 200x100x80 mm thick, Supplier: Aggregate Industries or similar approved, Product: Infilta, Colour: Autumn
 - F4. Proposed Paving Type 2**
Access Route to Houses / Private Gardens
Concrete slab paving, Size: 450 x 450 x 50 mm thick, Supplier: Aggregate Industries or similar approved, Product: Andover textured paving, Colour: Light grey
 - F5. Proposed Paving Type 3 - Car parks**, Permeable Concrete block paving, Size: 200 x 100 x 80 mm thick, Supplier: Aggregate Industries or similar approved, Product: Andover textured Infilta permeable paving, Colour: Light grey
 - F6. Proposed Paving Type 4 - LEAP access route**, Permeable Concrete Paving Block, A:160 x 120mm, B:160 x 160mm, C:160 x 240mm, 60 mm thk, Supplier: Marshalls or similar approved, Product: Tegula Priora Harvest
 - F7. Proposed Breendon Paths - Pedestrian routes**
Min 12mm grade size, 50mm surface layer after compaction. 150mm MOT Type 1 sub-base with geotextile sheet below. Colour - golden amber.
 - F8. Proposed Decking Type 1** For Boardwalks & footbridge; Hardwood timber decking. IPE FSC Hardwood, 21 mm thick, 145mm wide, Colour: Natural, Finish: Plain with anti-slip strips
 - F9. Proposed Decking Type 2** For Play area
Composite decking - Terrafina, Supplier: Kinley or similar approved, 21 mm thick, 146mm wide, Colour: Grey Brown, Finish: Yacht-grooved,
 - F10. Safety Surfacing**
Product: Rubber Bark Chippings. Supplier: Playbond or sim. Colour: Green/Brown
Depth to suit safety surfacing requirements
 - F11. Private terraces**
Concrete slab paving, 600 x 600mm, textured, colour: buff

- KERBS & EDGING**
- Proposed Granite Channels to Roads. Size 200 x 100 x 85mm thick, Supplier: Marshalls or similar approved, Colour: Dark grey
 - Proposed Kerb - To front of footpath
125mm upstand, Size: 145 x 255 x 915mm, Supplier: Marshalls or similar approved, Product: Conservation kerb, Colour: Charcoal
 - Proposed Edging - to back for footpath
Concrete Edging, Size: 63 x 150 x 915 mm, Supplier: Marshalls or similar approved, Product: Conservation edging, Colour: Charcoal

NOTE: For external lighting refer to Engineer's drawings (MLM).

Rev	Date	Drw	Revision or reason for Issue
P5	12/11/20	AS	Revised submission Levels.
P4	09/06/20	PC	Revised submission
P3	11/03/20	PC	Revised submission
P2	28/02/20	PC	Revised Reserved Matters Application
SO	08/11/19	MA	Stage 3 Issue
P1	06/09/19	SM	Issued For Planning
PO	23/08/19	SM	Issued For Planning



CHRIS BLANDFORD ASSOCIATES
landscape | environment | heritage
The Print Rooms Studio 511 164/180 Union St Waterloo London SE1 0LH
T +44 (0)20 7089 6480 E mail@cbastudios.com W www.cbastudios.com

Client	Castlefield International Limited
Project Title	TEVERSHAM ROAD FULBOURN
Drawing Series and Title	1000 SERIES Hard Landscape Strategy - SHEET 1
Scale @ A1	1:500
Drawn	PC
Date	AUG 2019
Approved	RB
Drawing Status	FOR PLANNING
Drawing number	TRF-CBA-1-GF-M2-L-1010
Revision	P5