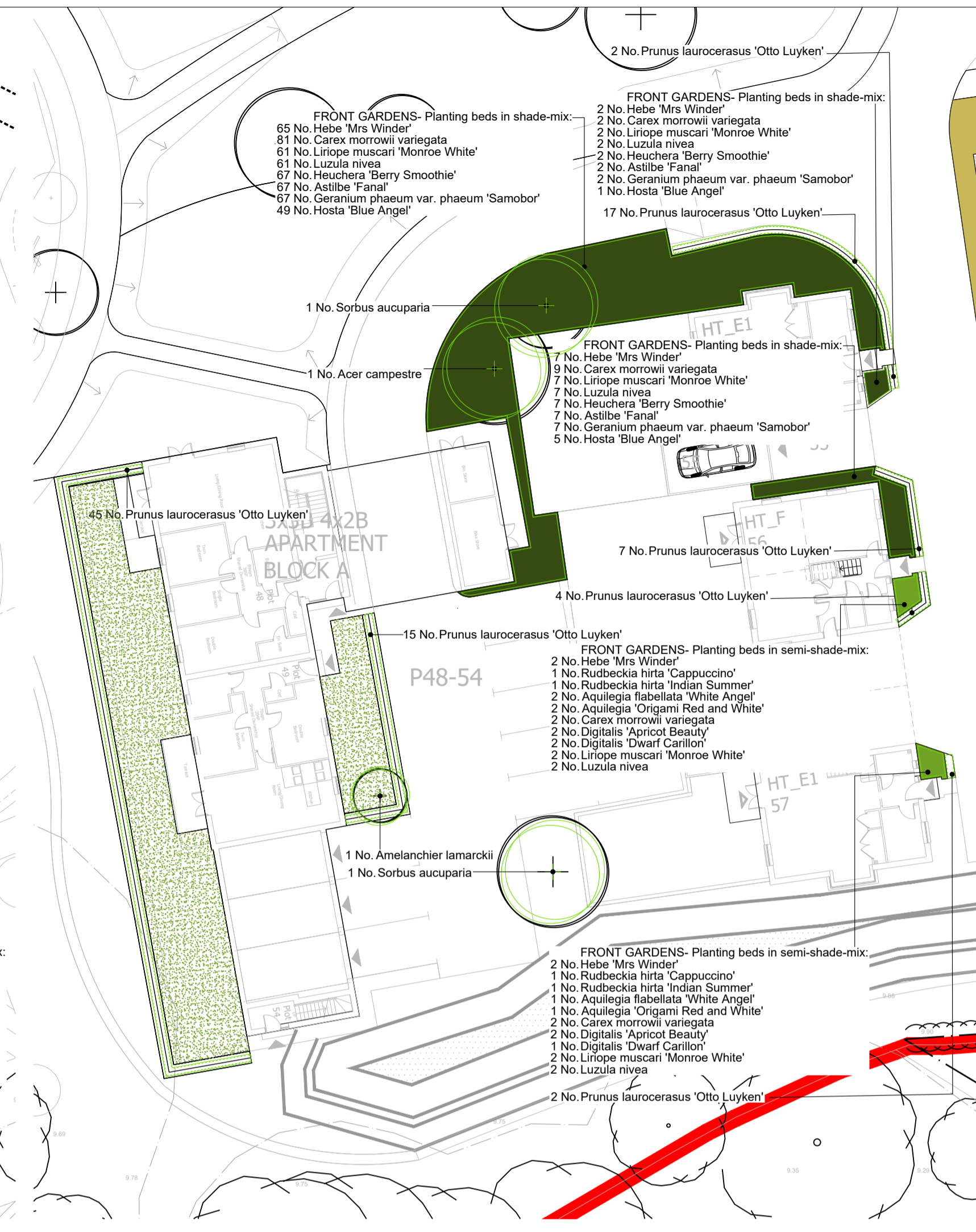




PLANTING PLAN A



PLANTING PLAN B

PLANTING SCHEDULE FOR DRAWING NO 4015

Trees	Number	Species	Specification	Height	Girth
5 No.	Acer campestre	Semi-Mature: Clear Stem min. 200 :4x: BR	4.0-4.5m	16-18cm	
2 No.	Sorbus aucuparia	Semi-Mature: Clear Stem min. 200 :4x: BR	4.0-4.5m	16-18cm	
6 No.	Amelanchier lamarckii	Standard :Multi-Stermed: 3/5 brks :3x: RB	3.0-3.5m	14-16cm	
3 No.	Malus floribunda	Standard :Clear Stem min. 200 :3x: RB	3.0-3.5m	14-16cm	
3 No.	Pyrus calleryana 'Chanticleer'	Standard :Clear Stem min. 200 :3x: RB	3.0-3.5m	14-16cm	

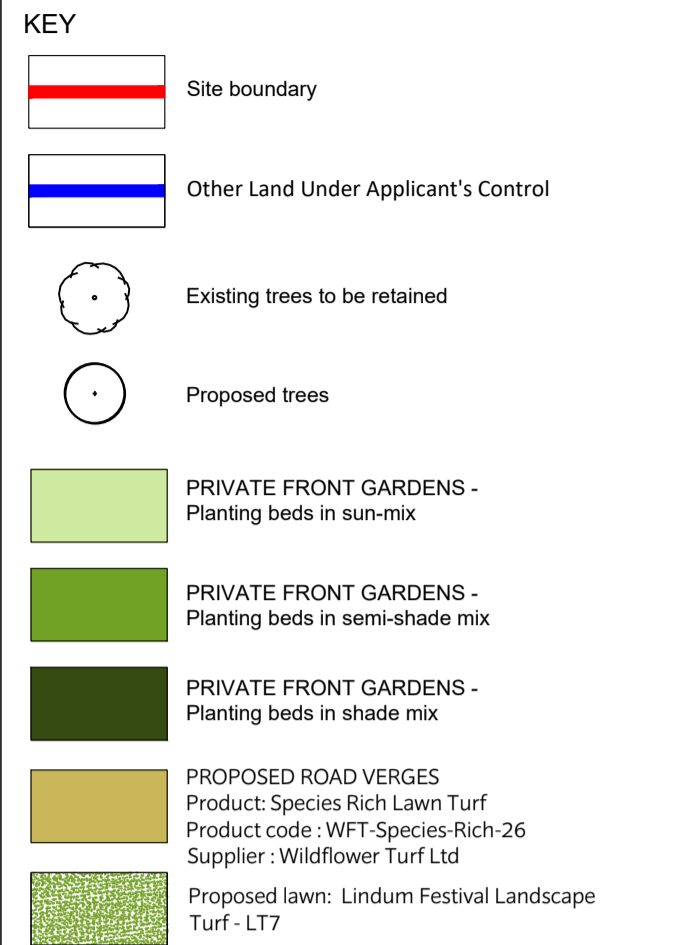
Hedge	Number	Species	Density	Pot Size	Height
265 No.	Prunus laurocerasus 'Otto Luyken'	1 Ctr	10L	60-80cm	

FRONT GARDENS - Planting beds in sun-mix:	Number	Species	Density	Pot Size	Height
118 No.	Anemone hybrida 'Honorie Jobert'	7/m <sup>2</sup>	2L		
48 No.	Delphinium 'Pink Sensation'	5/m <sup>2</sup>	2L		
48 No.	Delphinium 'Princess Caroline'	5/m <sup>2</sup>	2L		
48 No.	Delphinium 'Barba White'	5/m <sup>2</sup>	2L		
85 No.	Hebe 'Mrs Winder'	3/m <sup>2</sup>	5L	40-60cm	
110 No.	Lavandula angustifolia 'Hidcote'	4/m <sup>2</sup>	5L	30-40cm	
70 No.	Pennisetum alopecuroides 'Hamel'	4/m <sup>2</sup>	5L		
70 No.	Rosa Snow Carpet	4/m <sup>2</sup>	5L	30-40cm	
63 No.	Verbena bonariensis	5/m <sup>2</sup>	3L		
70 No.	Rudbeckia 'Cherry Brandy'	5/m <sup>2</sup>	3L		
70 No.	Rudbeckia hirta 'Sputnik'	5/m <sup>2</sup>	3L		

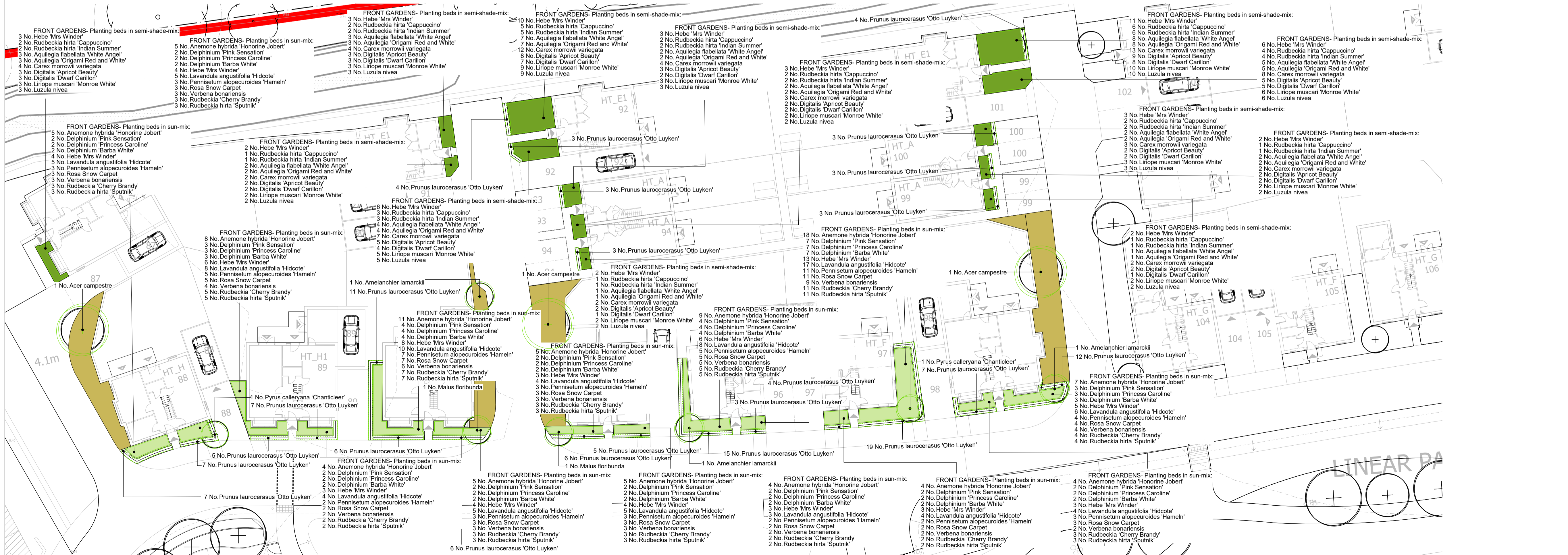
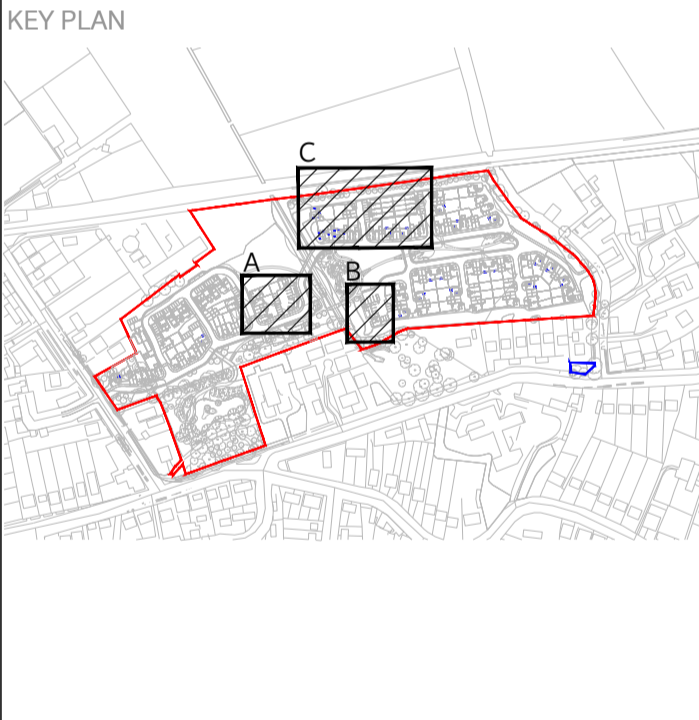
FRONT GARDENS - Planting beds in semi-shade-mix:	Number	Species	Density	Pot Size	Height
84 No.	Hebe 'Mrs Winder'	3/m <sup>2</sup>	5L	40-60cm	
47 No.	Rudbeckia hirta 'Cappuccino'	5/m <sup>2</sup>	3L		
47 No.	Rudbeckia hirta 'Indian Summer'	5/m <sup>2</sup>	3L		
63 No.	Aquilegia flabellata 'White Angel'	5/m <sup>2</sup>	3L		
63 No.	Aquilegia 'Origami Red and White'	5/m <sup>2</sup>	3L		
101 No.	Carex morrowii variegata	4/m <sup>2</sup>	2L		
74 No.	Digitalis 'Apricot Beauty'	5/m <sup>2</sup>	3L		
63 No.	Digitalis 'Dwarf Carillon'	5/m <sup>2</sup>	3L		
80 No.	Liriope muscari 'Monroe White'	3/m <sup>2</sup>	5L		
80 No.	Luzula nivea	3/m <sup>2</sup>	5L		

FRONT GARDENS - Planting beds in shade-mix:	Number	Species	Density	Pot Size	Height
84 No.	Hebe 'Mrs Winder'	3/m <sup>2</sup>	5L	40-60cm	
47 No.	Rudbeckia hirta 'Cappuccino'	5/m <sup>2</sup>	3L		
47 No.	Rudbeckia hirta 'Indian Summer'	5/m <sup>2</sup>	3L		
63 No.	Aquilegia flabellata 'White Angel'	5/m <sup>2</sup>	3L		
63 No.	Aquilegia 'Origami Red and White'	5/m <sup>2</sup>	3L		
101 No.	Carex morrowii variegata	4/m <sup>2</sup>	2L		
74 No.	Digitalis 'Apricot Beauty'	5/m <sup>2</sup>	3L		
63 No.	Digitalis 'Dwarf Carillon'	5/m <sup>2</sup>	3L		
80 No.	Liriope muscari 'Monroe White'	3/m <sup>2</sup>	5L		
80 No.	Luzula nivea	3/m <sup>2</sup>	5L		

This document should not be relied on or used in circumstances other than those for which it was prepared and for which Chris Blandford Associates was commissioned. Chris Blandford Associates accepts no responsibility for this document to any other party other than the person by whom it was commissioned.



NOTE:  
 - For informal play & LEAP planting plans refer to drawing TRF-CBA-1-GF-M2-L-4017  
 - For overall planting schedule refer to drawing TRF-CBA-1-GF-M2-L-4011



PLANTING PLAN C

P1	02/03/20	MA	Revised Reserved Matters Application
SO	08/11/19	SM	Stage 3 Issue
PO	13/09/19	DM	Issued For Planning
Rev	Date	Drawn	Revision or reason for Issue

Scale: North Point  
 0 10m  
 CHRIS BLANDFORD ASSOCIATES  
 landscape | environment | heritage  
 The Print Rooms Studio 511 164/180 Union St Waterloo London SE1 0LH  
 T +44 (0)20 7089 6480 E mail@cbastudios.com W www.cbastudios.com

Client  
 Castlefield International Limited

Project Title  
 TEVERSHAM ROAD FULBOURN

Drawing Series and Title  
 4000 SERIES  
 Planting Plan Sheet 4 of 6

Scale @ A1  
 1:250  
 Drawn  
 PC  
 Date  
 SEP 2019  
 Approved  
 AS  
 FOR PLANNING  
 Drawing Status

Drawing number  
 TRF-CBA-1-GF-M2-L-4015  
 Revision  
 P1