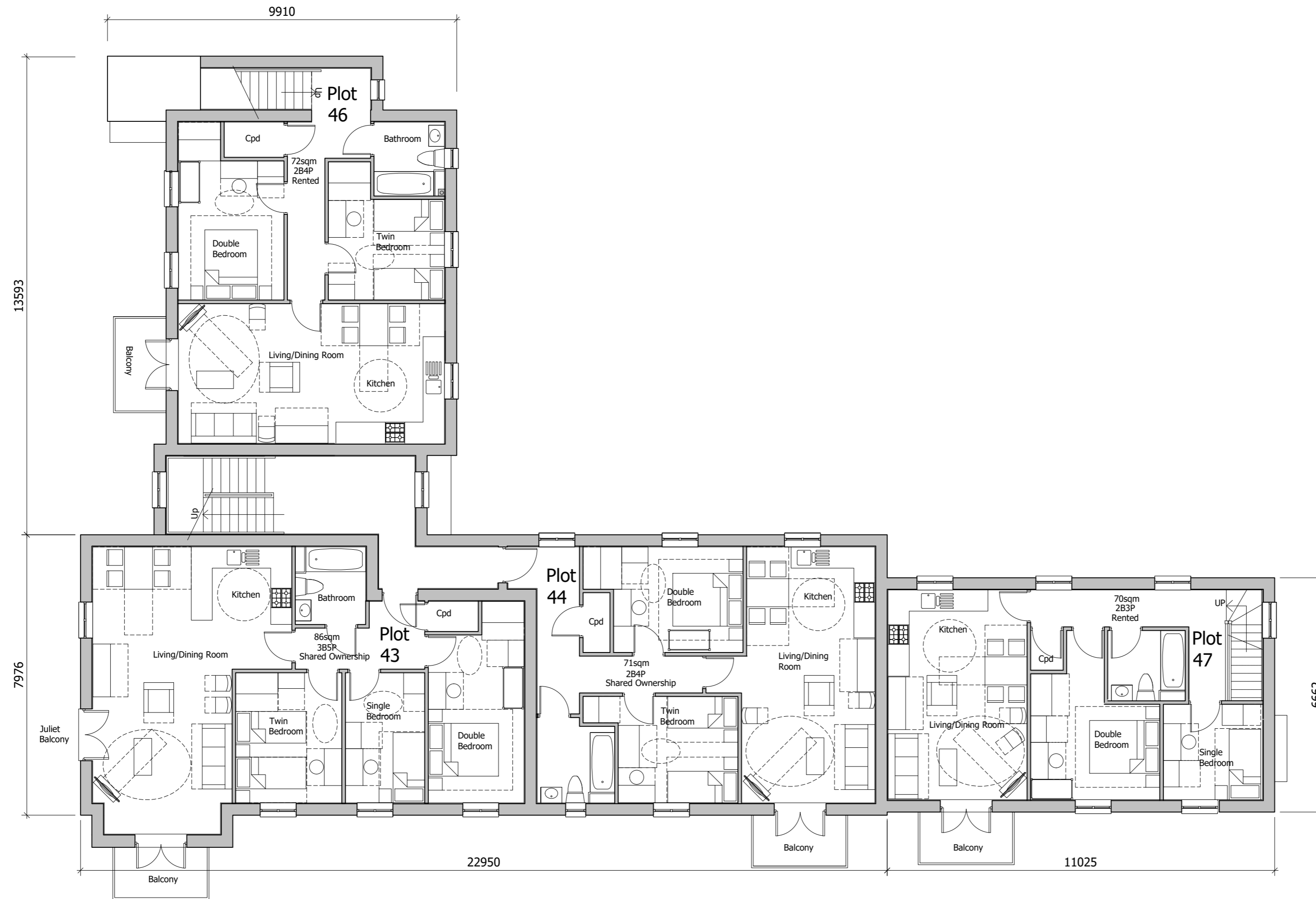


The scaling of this drawing cannot be assured

| Revision | Date     | Drn | Ckd |
|----------|----------|-----|-----|
| -        | 30.08.19 | EM  | CB  |
| P1       | 28.02.20 | ROR | ST  |

Revisions undertaken to LPA consultation responses and feedback



## PLANNING

Project  
**LAND AT TEVERSHAM ROAD  
 FULBOURN**

Drawing Title  
**APARTMENT BLOCK B  
 FIRST FLOOR**

|            |               |          |          |
|------------|---------------|----------|----------|
| Date       | Scale         | Drawn by | Check by |
| 15.07.19   | 1:100@A2      | EM       | SB       |
| Project No | Drawing No    | Revision |          |
| 28815      | 28815-P11-101 | P1       |          |

**BARTON  
 WILLMORE**

Planning • Master Planning & Urban Design • Architecture •  
 Landscape Planning & Design • Environmental Planning • Graphic  
 Communication • Public Engagement • Development Economics

bartonwillmore.co.uk



Offices at Birmingham Bristol Cambridge Cardiff Ebbw Vale Edinburgh  
 Glasgow Leeds London Manchester Newcastle Reading Southampton

