

**South Cambridgeshire Local Plan
Composite Main Modifications - 2018**



**Main Modification SC305d:
Delete Local Green Space
Site NH/12-044 and replace with
Protected Village Amenity Area**

**Main Modification SC305g:
Delete Local Green Space
Site NH/12-047 and replace with
Protected Village Amenity Area**

**Main Modification SC305e:
Delete Local Green Space
Site NH/12-045 and replace with
Protected Village Amenity Area**

**Main Modification SC305h:
Delete Local Green Space
Site NH/12-050 and replace with
Protected Village Amenity Area
(boundary as amended
10 March 2015) (Note: PVAA on
Adopted Proposals Map 2012)**

**Main Modification SC305f:
Delete Local Green Space
Site NH/12-046 and replace with
Protected Village Amenity Area**

**South Cambridgeshire
Proposed Submission
Policies Map: July 2013
Inset No. 24 Cottenham
Map 5 of 5
Scale 1:5000**

Reproduced from the Ordnance Survey Mapping with the permission of the Controller of Her Majesty's Stationery Office © Crown Copyright. Unauthorised reproduction infringes Crown Copyright and may lead to prosecution or civil proceedings.

NO FURTHER COPIES MAY BE MADE. SDC Licence 100022500 (2018)

**South Cambridgeshire Local Plan
Composite Main Modifications - 2018**



**Main Modification SC306a:
Delete Local Green Space
Site NH/12-055 and replace with
Protected Village Amenity Area**

**Main Modification SC306b:
Delete Local Green Space
Site NH/12-056 and replace with
Protected Village Amenity Area
(Note: PVAA on Adopted Proposals
Map 2012)**

E/15 (2c)

**South Cambridgeshire
Proposed Submission
Policies Map: July 2013
Inset No. 28 Duxford
Map 1 of 2
Scale 1:5000**

Reproduced from the Ordnance Survey Mapping with the permission of the Controller of Her Majesty's Stationery Office © Crown Copyright. Unauthorised reproduction infringes Crown Copyright and may lead to prosecution or civil proceedings.

NO FURTHER COPIES MAY BE MADE. SDCDC Licence 100022500 (2018)

**South Cambridgeshire Local Plan
Composite Main Modifications - 2018**



**Main Modification SC307c:
Delete Local Green Space
Site NH/12-057**

**Main Modification SC307f:
Delete Local Green Space
Site NH/12-064**

**Main Modification SC307a:
Delete Local Green Space
Site NH/12-060 and replace with
Protected Village Amenity Area
(Note: PVAA on Adopted Proposals
Map 2012)**

**NOTE:
Previously
a PVAA**

**Main Modification SC307d:
Delete Local Green Space
Site NH/12-062**

**Main Modification SC307b:
Delete Local Green Space
Site NH/12-061 and replace with
Protected Village Amenity Area
(Note: PVAA on Adopted Proposals
Map 2012)**

**Main Modification SC307e:
Delete Local Green Space
Site NH/12-063**

**South Cambridgeshire
Proposed Submission
Policies Map: July 2013**
Inset No. 29 Elsworth
Map 1 of 2
Scale 1:5000

Reproduced from the Ordnance Survey Mapping with the permission of the Controller of Her Majesty's Stationery Office © Crown Copyright. Unauthorised reproduction infringes Crown Copyright and may lead to prosecution or civil proceedings.

NO FURTHER COPIES MAY BE MADE. SDCD Licence 100022500 (2018)

**South Cambridgeshire Local Plan
Composite Main Modifications - 2018**



**Main Modification SC307f:
Delete Local Green Space
Site NH/12-064**

**Main Modification SC307a:
Delete Local Green Space
Site NH/12-060 and replace with
Protected Village Amenity Area
(Note: PVAA on Adopted Proposals
Map 2012)**

NH/12-058

NH/12-059

Elsworth

**Main Modification SC307b:
Delete Local Green Space
Site NH/12-061 and replace with
Protected Village Amenity Area
(Note: PVAA on Adopted Proposals
Map 2012)**

**NOTE:
Previously
a PVAA**

**Main Modification SC307d:
Delete Local Green Space
Site NH/12-062**

**Main Modification SC307e:
Delete Local Green Space
Site NH/12-063**

**South Cambridgeshire
Proposed Submission
Policies Map: July 2013
Inset No. 29 Elsworth
Map 2 of 2
Scale 1:5000**

Reproduced from the Ordnance Survey Mapping with the permission of the Controller of Her Majesty's Stationery Office © Crown Copyright. Unauthorised reproduction infringes Crown Copyright and may lead to prosecution or civil proceedings.

NO FURTHER COPIES MAY BE MADE. SDCD Licence 100022500 (2018)

**South Cambridgeshire Local Plan
Composite Main Modifications - 2018**



**NOTE:
Previously
a PVAA**

NH/12-065

**Main Modification SC308b:
Delete Local Green Space
Site NH/12-067**

Eltisley

**South Cambridgeshire
Proposed Submission
Policies Map: July 2013**

**Inset No. 30 Eltisley
Map 1 of 2
Scale 1:5000**

Reproduced from the Ordnance Survey Mapping with the permission of the Controller of Her Majesty's Stationery Office © Crown Copyright. Unauthorised reproduction infringes Crown Copyright and may lead to prosecution or civil proceedings.

NO FURTHER COPIES MAY BE MADE. SCDC Licence 100022500 (2018)

**South Cambridgeshire Local Plan
Composite Main Modifications - 2018**



**NOTE:
Previously
a PVAA**

NH/12-065

**Main Modification SC308a:
Delete Local Green Space
Site NH/12-066**

**Main Modification SC308b:
Delete Local Green Space
Site NH/12-067**

**South Cambridgeshire
Proposed Submission
Policies Map: July 2013**

**Inset No. 30 Eltisley
Map 2 of 2
Scale 1:5000**

Reproduced from the Ordnance Survey Mapping with the permission of the Controller of Her Majesty's Stationery Office © Crown Copyright. Unauthorised reproduction infringes Crown Copyright and may lead to prosecution or civil proceedings.

NO FURTHER COPIES MAY BE MADE. SDCD Licence 100022500 (2018)

**South Cambridgeshire Local Plan
Composite Main Modifications - 2018**



**Main Modification SC309a:
Delete Local Green Space
Site NH/12-073 and replace with
Protected Village Amenity Area**

NH/12-071

NH/12-072

**South Cambridgeshire
Proposed Submission
Policies Map: July 2013**

Inset No. 35 Foxton
Map 1 of 2
Scale 1:5000

Reproduced from the Ordnance Survey Mapping with the permission of the Controller of Her Majesty's Stationery Office © Crown Copyright. Unauthorised reproduction infringes Crown Copyright and may lead to prosecution or civil proceedings.

NO FURTHER COPIES MAY BE MADE. SDC Licence 100022500 (2018)

**South Cambridgeshire Local Plan
Composite Main Modifications - 2018**



**Main Modification SC309a:
Delete Local Green Space
Site NH/12-073 and replace with
Protected Village Amenity Area**

NH/12-072

Foxton
NH/12-070a

**Main Modification SC309b:
Delete Local Green Space
Site NH/12-070b**

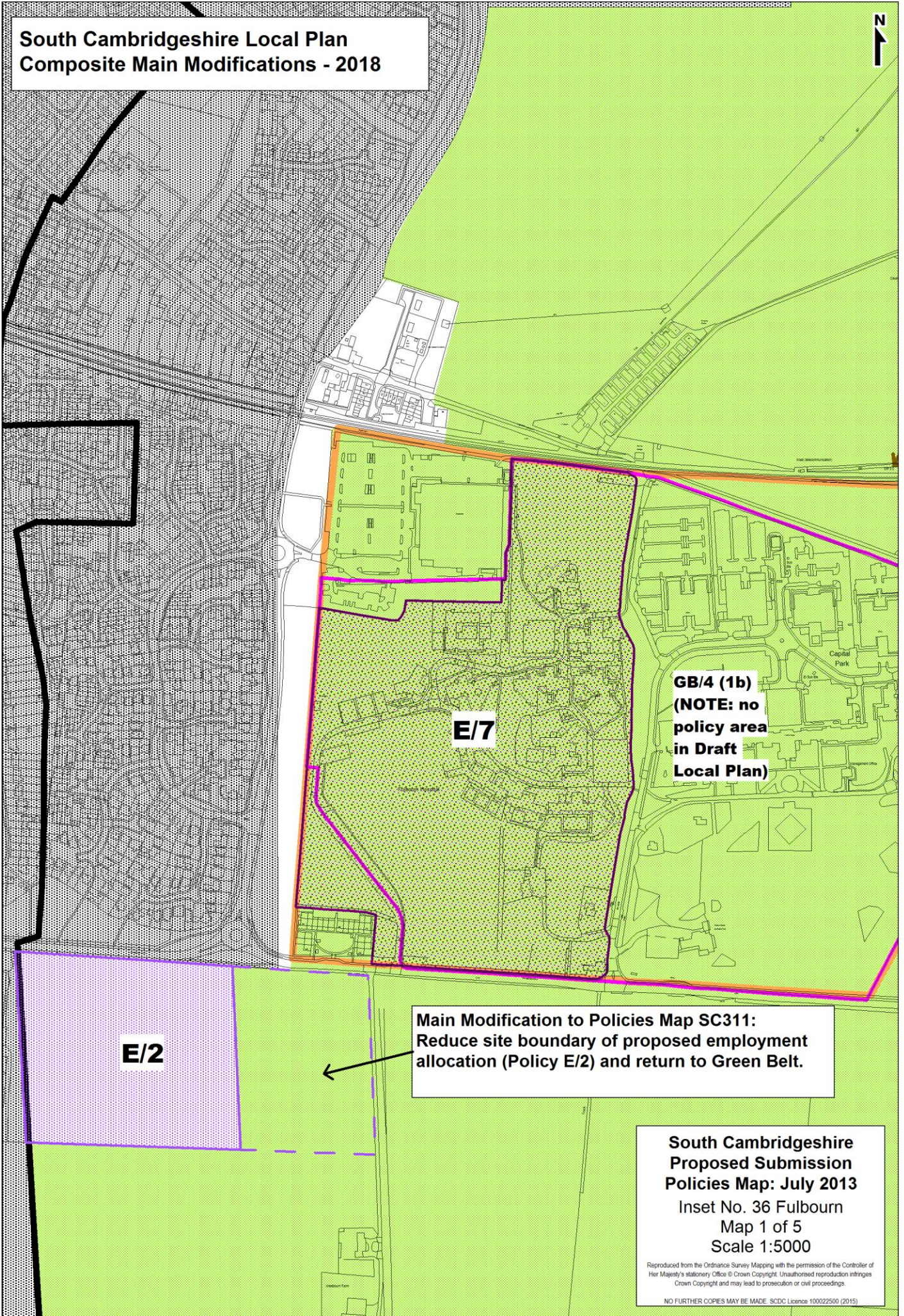
**South Cambridgeshire
Proposed Submission
Policies Map: July 2013**

Inset No. 35 Foxton
Map 2 of 2
Scale 1:5000

Reproduced from the Ordnance Survey Mapping with the permission of the Controller of Her Majesty's Stationery Office © Crown Copyright. Unauthorised reproduction infringes Crown Copyright and may lead to prosecution or civil proceedings.

NO FURTHER COPIES MAY BE MADE. SDCD Licence 100022500 (2018)

South Cambridgeshire Local Plan
Composite Main Modifications - 2018



GB/4 (1b)
(NOTE: no
policy area
in Draft
Local Plan)

E/7

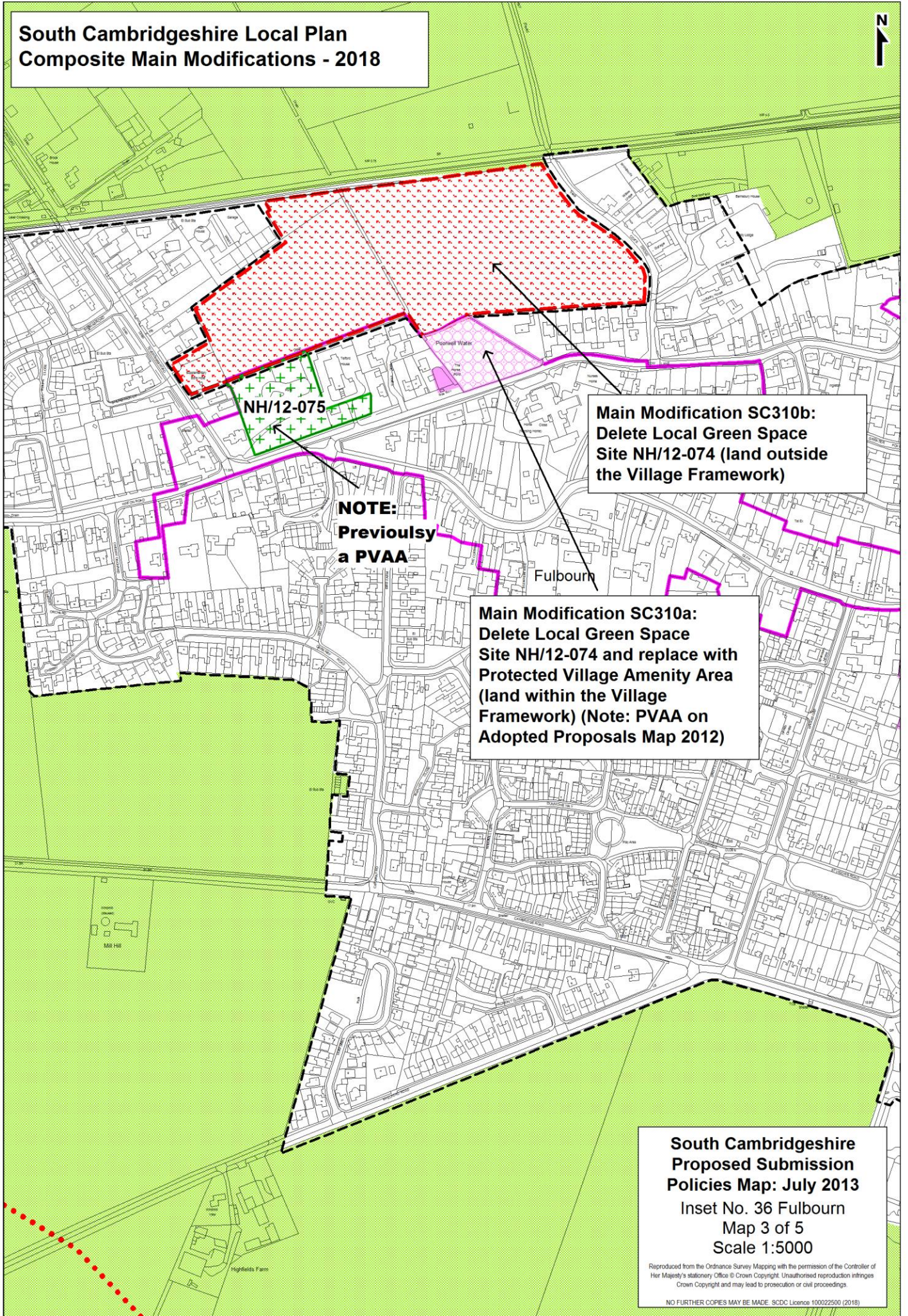
E/2

Main Modification to Policies Map SC311:
Reduce site boundary of proposed employment
allocation (Policy E/2) and return to Green Belt.

South Cambridgeshire
Proposed Submission
Policies Map: July 2013
Inset No. 36 Fulbourn
Map 1 of 5
Scale 1:5000

Reproduced from the Ordnance Survey Mapping with the permission of the Controller of Her Majesty's Stationery Office © Crown Copyright. Unauthorised reproduction infringes Crown Copyright and may lead to prosecution or civil proceedings.
NO FURTHER COPIES MAY BE MADE. SCDC Licence 100022500 (2015)

**South Cambridgeshire Local Plan
Composite Main Modifications - 2018**



**Main Modification SC310b:
Delete Local Green Space
Site NH/12-074 (land outside
the Village Framework)**

**NOTE:
Previously
a PVAA**

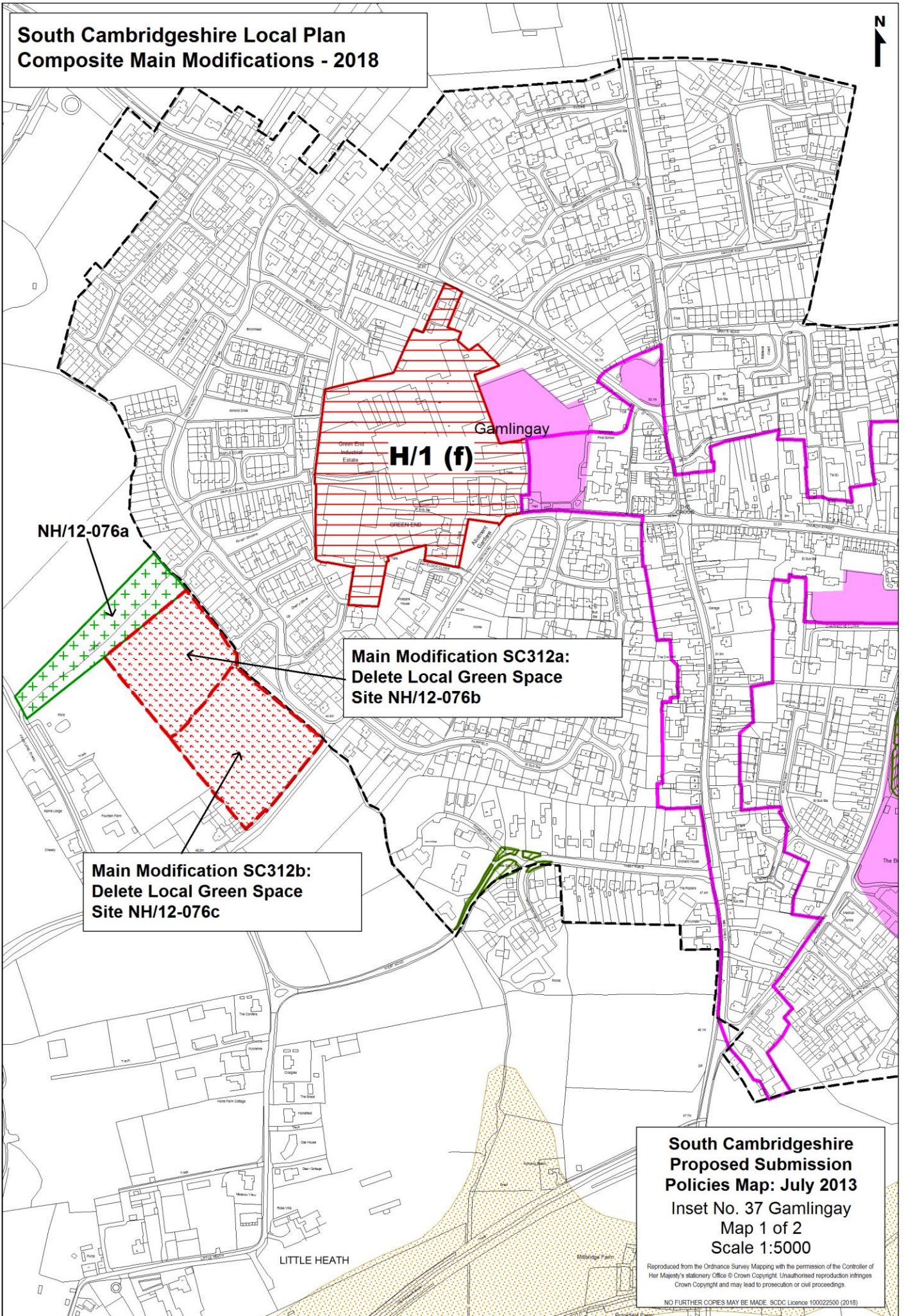
**Main Modification SC310a:
Delete Local Green Space
Site NH/12-074 and replace with
Protected Village Amenity Area
(land within the Village
Framework) (Note: PVAA on
Adopted Proposals Map 2012)**

**South Cambridgeshire
Proposed Submission
Policies Map: July 2013**
Inset No. 36 Fulbourn
Map 3 of 5
Scale 1:5000

Reproduced from the Ordnance Survey Mapping with the permission of the Controller of Her Majesty's Stationery Office © Crown Copyright. Unauthorised reproduction infringes Crown Copyright and may lead to prosecution or civil proceedings.

NO FURTHER COPIES MAY BE MADE. SDCD Licence 100022500 (2018)

**South Cambridgeshire Local Plan
Composite Main Modifications - 2018**



NH/12-076a

H/1 (f)

Gamlingay

**Main Modification SC312a:
Delete Local Green Space
Site NH/12-076b**

**Main Modification SC312b:
Delete Local Green Space
Site NH/12-076c**

LITTLE HEATH

**South Cambridgeshire
Proposed Submission
Policies Map: July 2013**
Inset No. 37 Gamlingay
Map 1 of 2
Scale 1:5000

Reproduced from the Ordnance Survey Mapping with the permission of the Controller of Her Majesty's Stationery Office © Crown Copyright. Unauthorised reproduction infringes Crown Copyright and may lead to prosecution or civil proceedings.
NO FURTHER COPIES MAY BE MADE. SDC Licence 100022500 (2018)