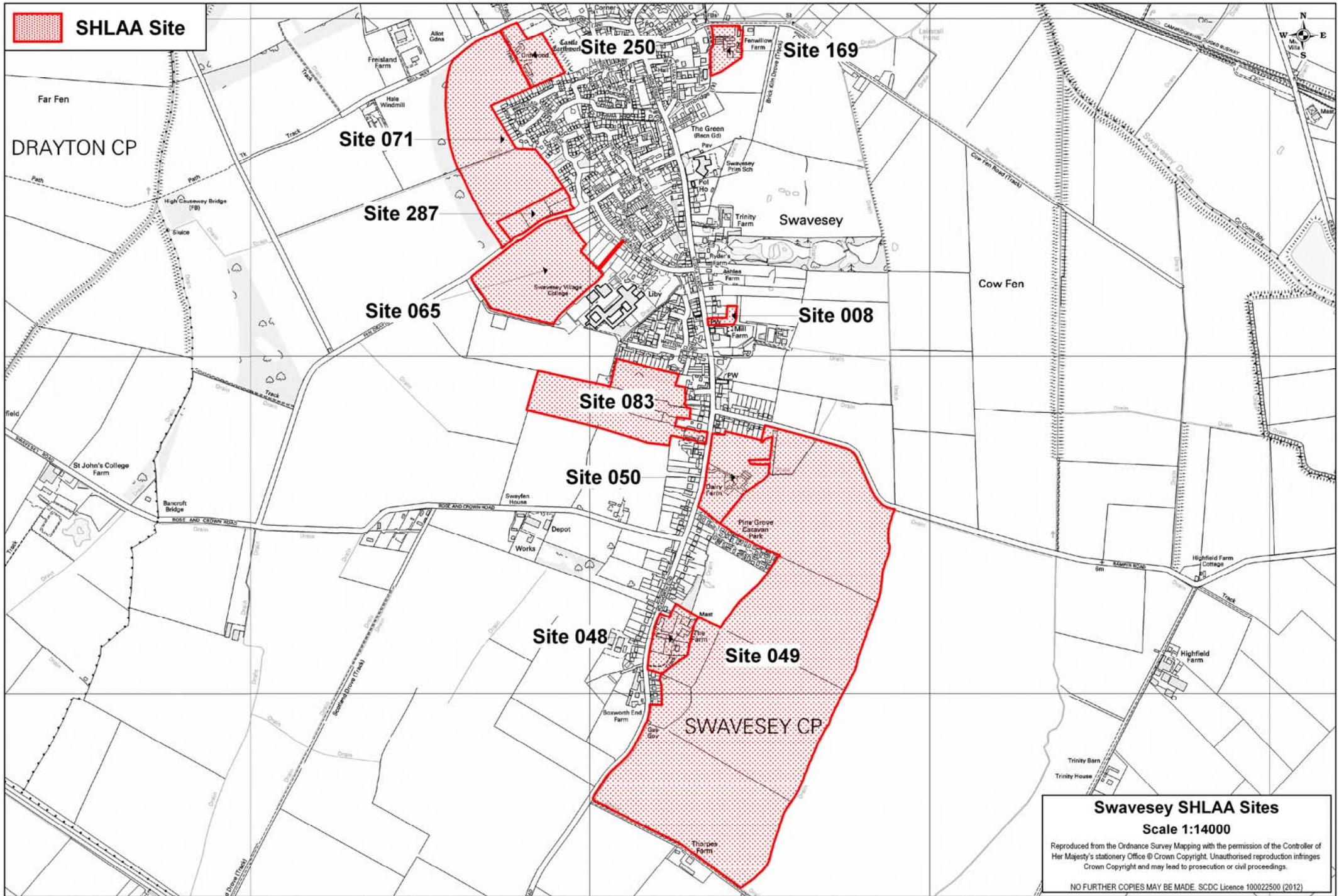




**Site Comments:**

<b>Site 008</b>	East of Middlewatch. Significant heritage, townscape and landscape impacts - adjacent to several LB. Possible noise from adjacent business centre. Unsuitable highway access. Utility & services require upgrade.
<b>Site 048</b>	East of Boxworth End. Significant heritage, townscape and landscape impacts - LB within site & ICF along road frontage. Utility & services require upgrade.
<b>Site 049</b>	Very large site to east of Boxworth End. Significant heritage, townscape and landscape impacts - LB within site & ICF along road frontage. Scale out of proportion to village and character of linear / rural. North eastern part within Flood Zones 2 & 3. Air quality & noise issues from scale of development, and noise and malodour from farm. A14 capacity issues. Utility & services require significant upgrade.
<b>Site 050</b>	East of Boxworth End. Significant heritage, townscape and landscape impacts - LB within site & ICF along road frontage. Utility & services require upgrade.
<b>Site 065</b>	Site adjacent to Secondary School on west. Adverse townscape and landscape impacts - exposed site. A14 capacity issues. Utility & services require upgrade.
<b>Site 071</b>	Large site wrap around north west. Significant townscape and landscape impacts - exposed site and difficult to integrate remaining non-flood land into townscape. Large part middle of site Flood Zone 3, majority of rest Flood Zone 2. A14 capacity issues. Utility & services require upgrade.
<b>Site 083</b>	Site adjacent to Secondary School to south. Adverse townscape and landscape - dense vegetation / rural & intimate character. Possible smaller scale development. A14 capacity issues. Utility & services require upgrade. 3 landowners.
<b>Site 179</b>	Site to the south east of Market Street. Whole site Flood Zone 3. Significant heritage, townscape and landscape impacts. Noise and odour from scrap yard and sewage pumping station. No highway access. Utility & services require upgrade.
<b>Site 250</b>	Site to north west, adjacent to nationally important SAM. Significant heritage, townscape and landscape impact. Small part Flood Zone 2. Unsuitable highway access - upgrade would be detrimental to rural character. Utility & services require upgrade.
<b>Site 287</b>	Site to the west. Majority Flood Zone 2. Adverse townscape and landscape impact - very exposed site. A14 capacity issues. Utility & services require upgrade.

 **SHLAA Site**



**Swavesey SHLAA Sites**

Scale 1:14000

Reproduced from the Ordnance Survey Mapping with the permission of the Controller of Her Majesty's Stationery Office © Crown Copyright. Unauthorised reproduction infringes Crown Copyright and may lead to prosecution or civil proceedings.

NO FURTHER COPIES MAY BE MADE. SDCD Licence 100022500 (2012)