

Extra heavy standard tree

Airation and irrigation system:
 - RRURB1A RootRain Urban irrigation system or similar approved
 - Inlet to be finished slightly above ground level
 - Situated around rootball at a depth of 200mm

Mulch Edging:
 - 100 x 25mm edging timber mounted to 250 x 50mm pegs at 400mm spacings

Footway Edging
 Paving
 Footway sub-base
 Sub-soil

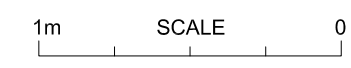
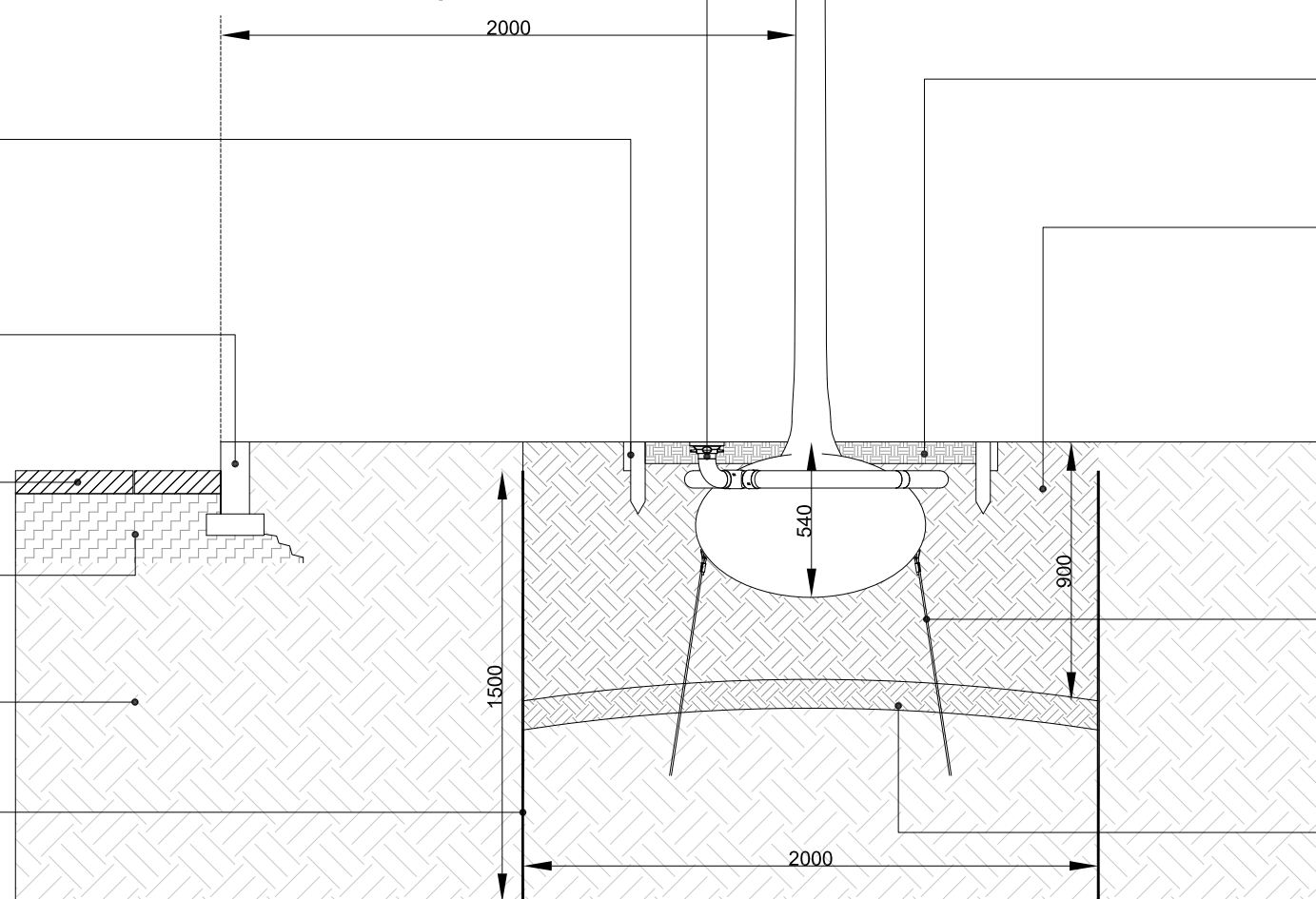
Bark Mulch, 75mm thick layer to protect rootball and base of tree

Backfilled topsoil

Tree anchor system:
 - Arborguy large anchor system SASLP
 - Toolkit for installation required SASKITXMA

Loosen and shape base as shown to aid root penetration and drainage

ReRoot 2000 barrier or similar approved to be installed to a depth of 1500mm at the edge of the excavation where adjacent to highway, buildings or services



B	16,12,15	Design development	DR	BM	SM
A	18,11,15	First issue for discussion	DR	BM	SM
Rev	Revision Date	Purpose of revision	Drawn	Checked	Approved



CLIENT
Gallagher Estates

PROJECT
 Northstowe Phase 1

DRAWING Local Centre Square
 Tree Pit Detail in Soft Landscape

SCALE	DRAWN	DATE	Drawing. No.	REV
1:25@A3	DR	Nov '15	1424.LCDD.10	B