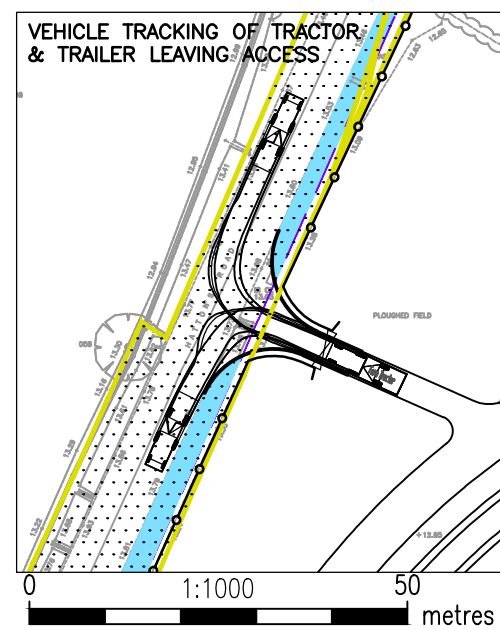
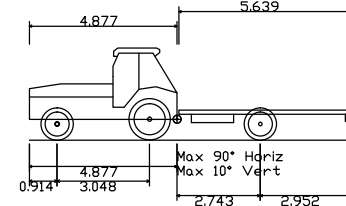
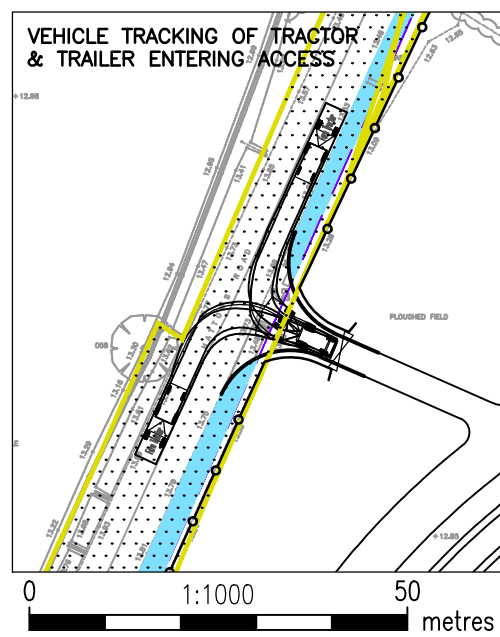
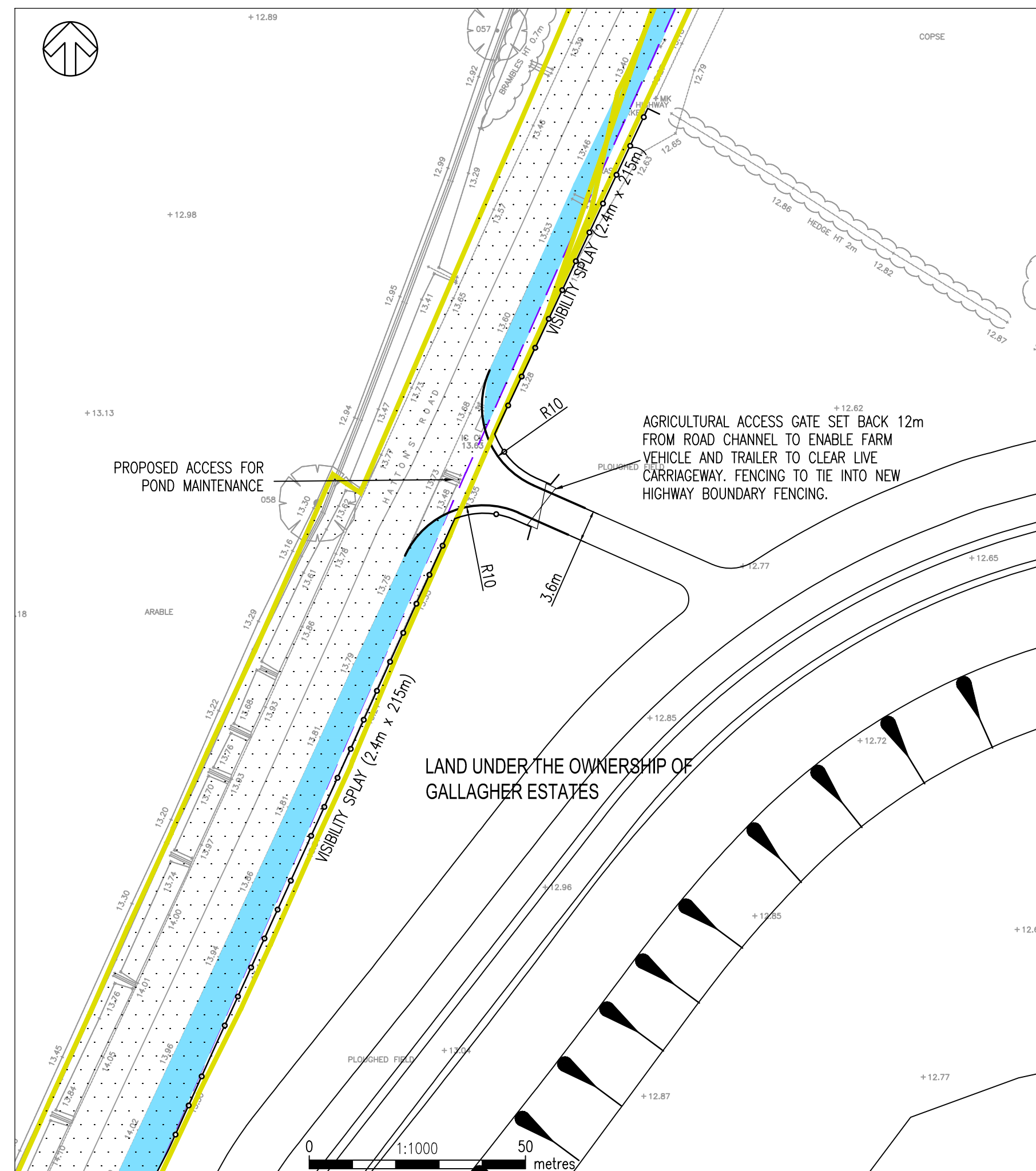


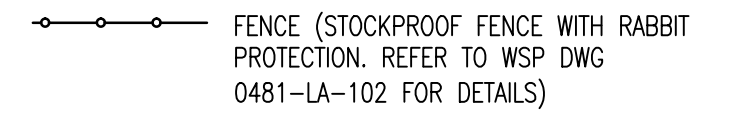
DESCRIPTION OF MATERIAL	SIZE	FIXINGS AND FITTINGS
POSTS (GALVANISED MILD STEEL SHS)	120 x 120 x 5mm THICK	TOP CAPPING PLATE 4.8 THK ADJUSTABLE HINGES BASE PLATE 250x250x4.8 CAP AND BASE TO BE CONTINUOUSLY FLUSH WELDED TO SHS
OUTER FRAMES (GALVANISED MILD STEEL SHS)	80 x 80 x 3.0 THICK	
VERTICAL BRACES (GALVANISED MILD STEEL SHS)	FOUR 38x4.8	FILLET WELDED TO EACH GATE MEMBER CROSSED BY BRACES

AGRICULTURAL ACCESS GATE
N.T.S



NOTES:

- DIMENSIONS ARE IN MILLIMETRES UNLESS OTHERWISE STATED.
- THIS DRAWING IS TO BE READ IN CONJUNCTION WITH ALL RELEVANT SCHEME DRAWINGS AND SPECIFICATIONS.
- THIS DRAWING IS NOT TO BE REPRODUCED IN ANY PART OR FORM WITHOUT CONSENT OF WSP UK LIMITED. ALL COPYRIGHT RESERVED.
- EXISTING ROAD LEVELS AND DRAINAGE INVERT LEVELS SHALL BE CHECKED PRIOR TO CONSTRUCTION COMMENCEMENT. ANY DISCREPANCY SHALL BE REFERRED TO THE ENGINEER.
- THE LOCATION AND DEPTHS OF ALL EXISTING SERVICE APPARATUS SHOULD BE CONFIRMED WITH THE SERVICE AUTHORITIES PRIOR TO ANY EXCAVATION WORKS TAKING PLACE.
- TYPICAL DETAILS EXTRACTED FROM CAMBRIDGE COUNTY COUNCILS STANDARD DETAILS.



REV	DATE	BY	DESCRIPTION	CHK	APD
E	17/12/2014	RJ	STATUS AMENDED	AMC	AMC
D	02/12/2014	AO	FENCE ADDED & DWG STATUS UPDATED	AMC	AMC
C	21/11/2014	RGC	ACCESS DETAILS REVISED AND LEVELS ADDED	AMC	AMC
B	25/06/2014	RAH	ACCESS GRADIENT AND DRAINAGE ADDED	RAH	AMC
A	13/08/2013	RJ	FIRST ISSUE	RAH	AMC

DRAWING STATUS: **PLANNING APPLICATION**



One Queens Drive Birmingham West Midlands B5 4PJ
Tel: +44 (0)121 352 4700 Fax: +44 (0)121 352 4701
http://www.wspgroup.com

CLIENT: **GALLAGHERS ESTATES**

ARCHITECT: -

PROJECT: **NORTHSTOWE PHASE 1
CAMBRIDGE
HATTON'S ROAD PONDS**

TITLE: **PROPOSED SOUTHERN POND
MAINTENANCE ACCESS**

SCALE @ A2: AS SHOWN	CHECKED: RAH	APPROVED: AMC
CAD FILE: 0481-SK-004-006	DESIGN-DRAWN: RAH	DATE: August 2013
PROJECT No: 50600481	DRAWING No: 0481-SK-006	REV: E

© WSP Group Ltd