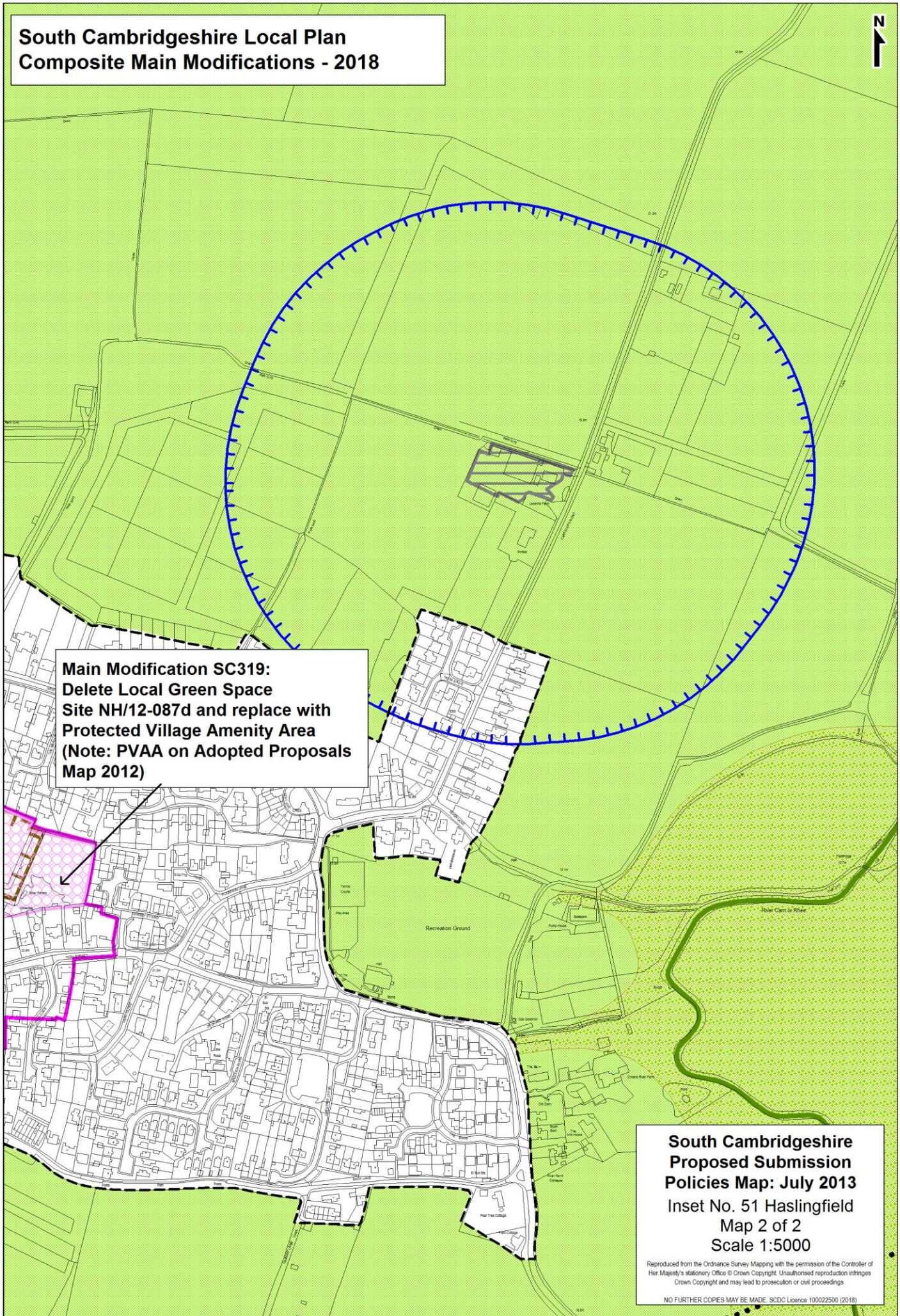


**South Cambridgeshire Local Plan
Composite Main Modifications - 2018**



**Main Modification SC319:
Delete Local Green Space
Site NH/12-087d and replace with
Protected Village Amenity Area
(Note: PVAA on Adopted Proposals
Map 2012)**

**South Cambridgeshire
Proposed Submission
Policies Map: July 2013
Inset No. 51 Haslingfield
Map 2 of 2
Scale 1:5000**

Reproduced from the Ordnance Survey Mapping with the permission of the Controller of Her Majesty's Stationery Office © Crown Copyright. Unauthorised reproduction infringes Crown Copyright and may lead to prosecution or civil proceedings.

NO FURTHER COPIES MAY BE MADE. SDCDC Licence 100022500 (2018)

**South Cambridgeshire Local Plan
Composite Main Modifications - 2018**

**Main Modification SC320:
Delete Local Green Space
Site NH/12-089 and replace with
Protected Village Amenity Area
(Note: PVAA on Adopted Proposals
Map 2012)**

E/8
Impington

**South Cambridgeshire
Proposed Submission
Policies Map: July 2013**
Inset No. 58 Histon & Impington
Map 6 of 7
Scale 1:5000

Reproduced from the Ordnance Survey Mapping with the permission of the Controller of Her Majesty's Stationery Office © Crown Copyright. Unauthorised reproduction infringes Crown Copyright and may lead to prosecution or civil proceedings.
NO FURTHER COPIES MAY BE MADE. SCDC Licence 100022500 (2018)

**South Cambridgeshire Local Plan
Composite Main Modifications - 2018**



**Main Modification SC320:
Delete Local Green Space
Site NH/12-089 and replace with
Protected Village Amenity Area
(Note: PVAA on Adopted Proposals
Map 2012)**

Impington
E/8

**SP/14 (1e)
(NOTE: no policy area
in Draft Local Plan)**

**South Cambridgeshire
Proposed Submission
Policies Map: July 2013**
Inset No. 58 Histon & Impington
Map 7 of 7
Scale 1:5000

Reproduced from the Ordnance Survey Mapping with the permission of the Controller of Her Majesty's Stationery Office © Crown Copyright. Unauthorised reproduction infringes Crown Copyright and may lead to prosecution or civil proceedings.

NO FURTHER COPIES MAY BE MADE. SCDC Licence 100022500 (2018)

**South Cambridgeshire
Proposed Submission
Policies Map: July 2013**
Inset No. 61 Ickleton
Map 1 of 1
Scale 1:5000

Reproduced from the Ordnance Survey Mapping with the permission of the Controller of Her Majesty's Stationery Office © Crown Copyright. Unauthorised reproduction infringes Crown Copyright and may lead to prosecution or civil proceedings.
NO FURTHER COPIES MAY BE MADE. SCDC Licence 100022500 (2016)



**Main Modification SC321:
Delete Local Green Space
Site NH/12-091**

NH/12-090

Ickleton

**South Cambridgeshire Local Plan
Composite Main Modifications - 2018**

**South Cambridgeshire Local Plan
Composite Main Modifications - 2018**



**Main Modification SC322b:
Delete Local Green Space
Site NH/12-094b and replace with
Protected Village Amenity Area**

**NOTE:
Previously
a PVAA**

NH/12-094a

Kingston

NH/12-092a

NH/12-093

**Main Modification SC322a:
Delete Local Green Space
Site NH/12-092b and replace with
Protected Village Amenity Area**

NH/12-095

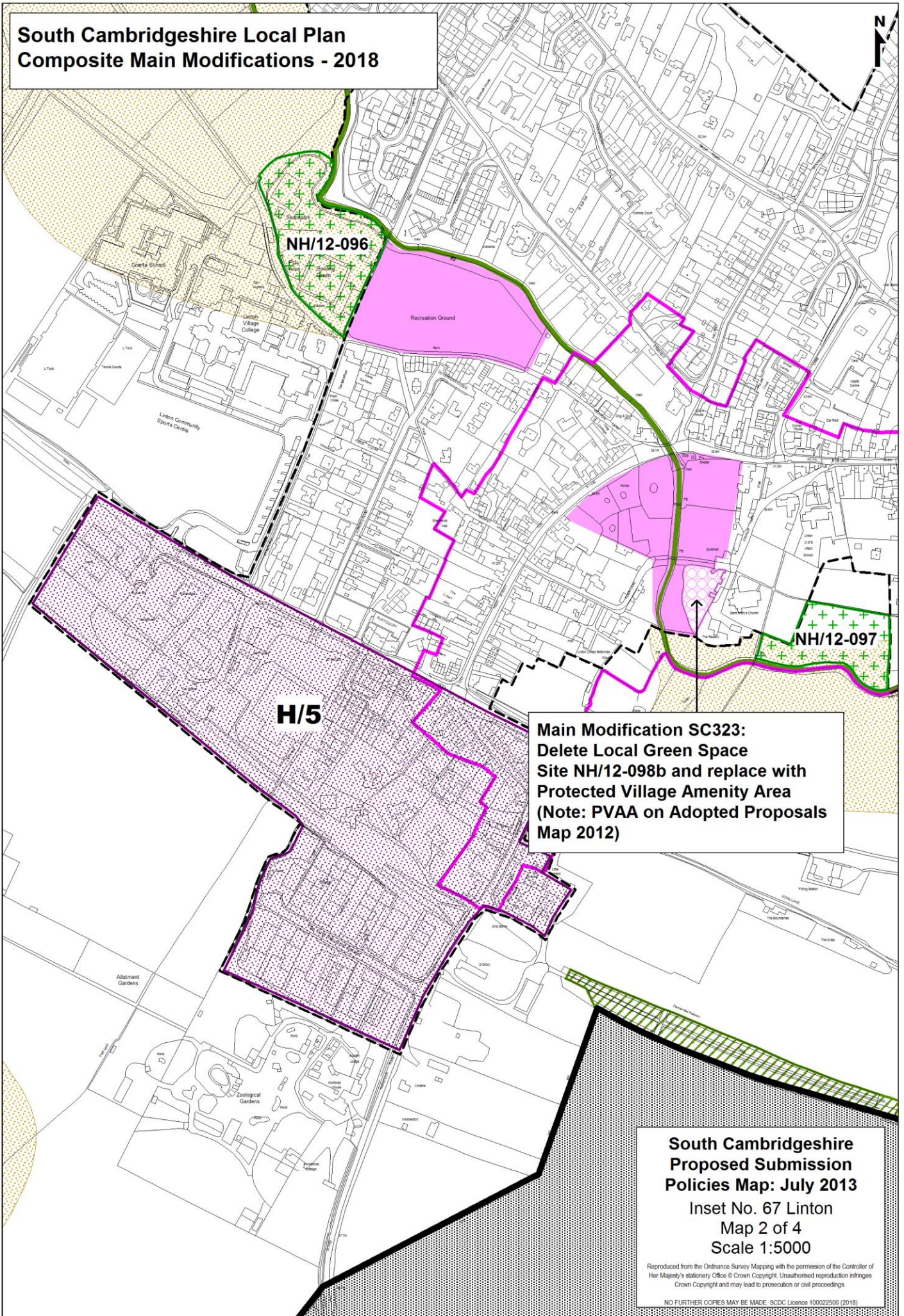
**South Cambridgeshire
Proposed Submission
Policies Map: July 2013**

Inset No. 62 Kingston
Map 1 of 1
Scale 1:5000

Reproduced from the Ordnance Survey Mapping with the permission of the Controller of Her Majesty's Stationery Office © Crown Copyright. Unauthorised reproduction infringes Crown Copyright and may lead to prosecution or civil proceedings.

NO FURTHER COPIES MAY BE MADE. SDCD Licence 100022500 (2018)

**South Cambridgeshire Local Plan
Composite Main Modifications - 2018**



NH/12-096

Recreation Ground

NH/12-097

H/5

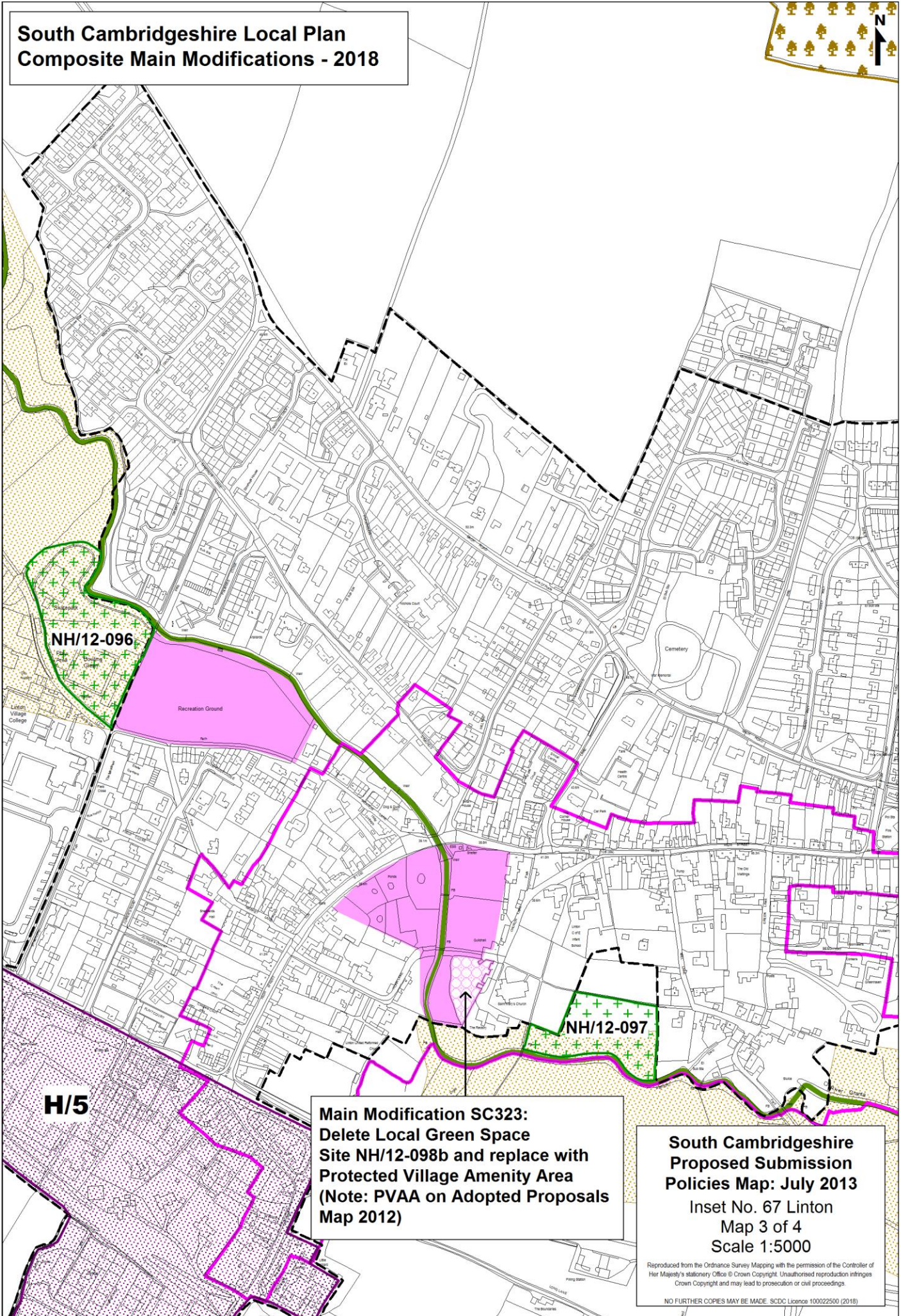
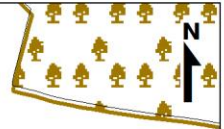
**Main Modification SC323:
Delete Local Green Space
Site NH/12-098b and replace with
Protected Village Amenity Area
(Note: PVAA on Adopted Proposals
Map 2012)**

**South Cambridgeshire
Proposed Submission
Policies Map: July 2013**
Inset No. 67 Linton
Map 2 of 4
Scale 1:5000

Reproduced from the Ordnance Survey Mapping with the permission of the Controller of Her Majesty's Stationery Office © Crown Copyright. Unauthorised reproduction infringes Crown Copyright and may lead to prosecution or civil proceedings.

NO FURTHER COPIES MAY BE MADE. SCDC Licence 100022500 (2018)

**South Cambridgeshire Local Plan
Composite Main Modifications - 2018**



**Main Modification SC323:
Delete Local Green Space
Site NH/12-098b and replace with
Protected Village Amenity Area
(Note: PVAA on Adopted Proposals
Map 2012)**

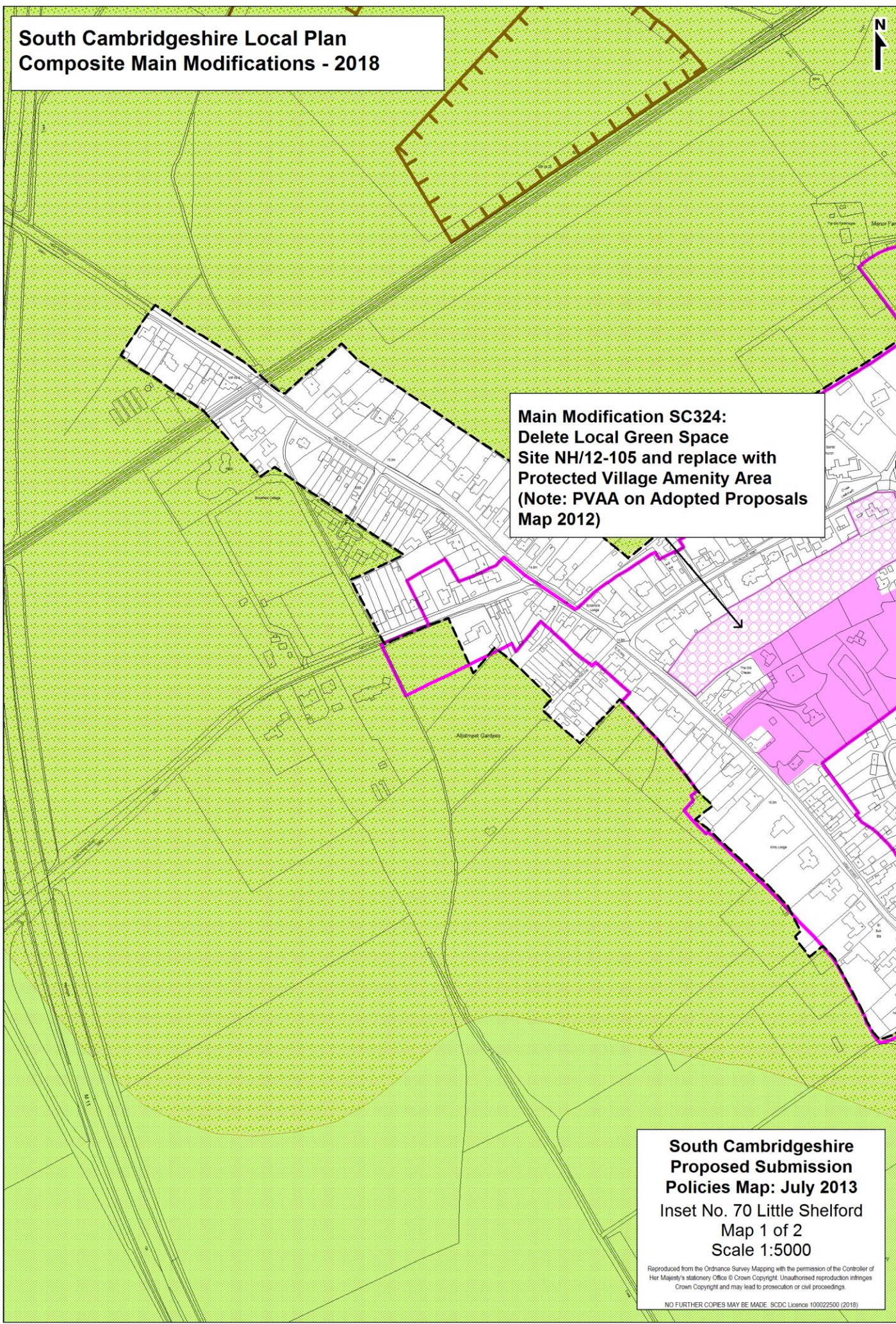
**South Cambridgeshire
Proposed Submission
Policies Map: July 2013**
Inset No. 67 Linton
Map 3 of 4
Scale 1:5000

Reproduced from the Ordnance Survey Mapping with the permission of the Controller of Her Majesty's Stationery Office © Crown Copyright. Unauthorised reproduction infringes Crown Copyright and may lead to prosecution or civil proceedings.
NO FURTHER COPIES MAY BE MADE. SDCD Licence 100022500 (2018)

**South Cambridgeshire Local Plan
Composite Main Modifications - 2018**



**Main Modification SC324:
Delete Local Green Space
Site NH/12-105 and replace with
Protected Village Amenity Area
(Note: PVAA on Adopted Proposals
Map 2012)**



**South Cambridgeshire
Proposed Submission
Policies Map: July 2013**
Inset No. 70 Little Shelford
Map 1 of 2
Scale 1:5000

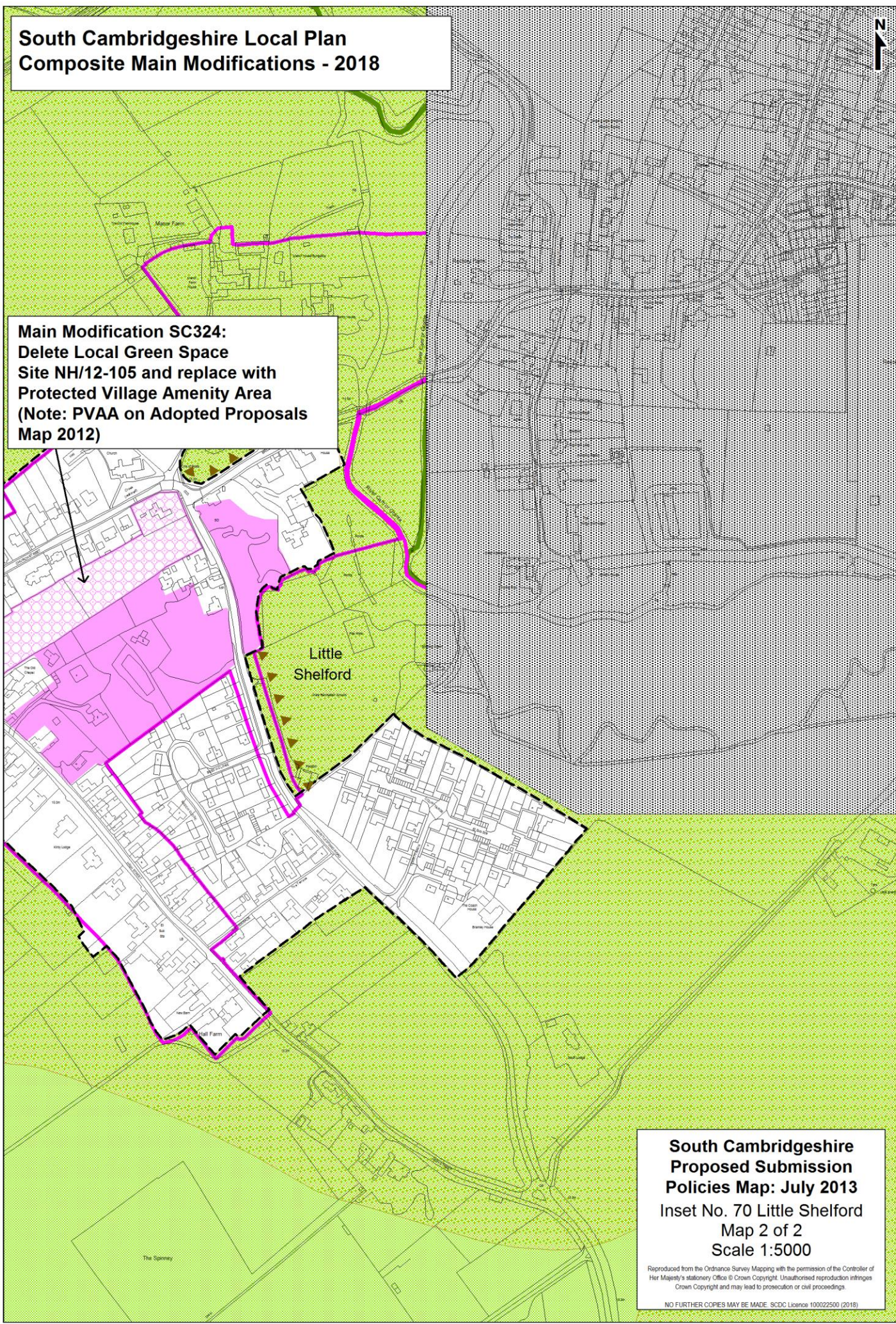
Reproduced from the Ordnance Survey Mapping with the permission of the Controller of Her Majesty's Stationery Office © Crown Copyright. Unauthorised reproduction infringes Crown Copyright and may lead to prosecution or civil proceedings.

NO FURTHER COPIES MAY BE MADE. SDC Licence 100022500 (2018)

**South Cambridgeshire Local Plan
Composite Main Modifications - 2018**



**Main Modification SC324:
Delete Local Green Space
Site NH/12-105 and replace with
Protected Village Amenity Area
(Note: PVAA on Adopted Proposals
Map 2012)**

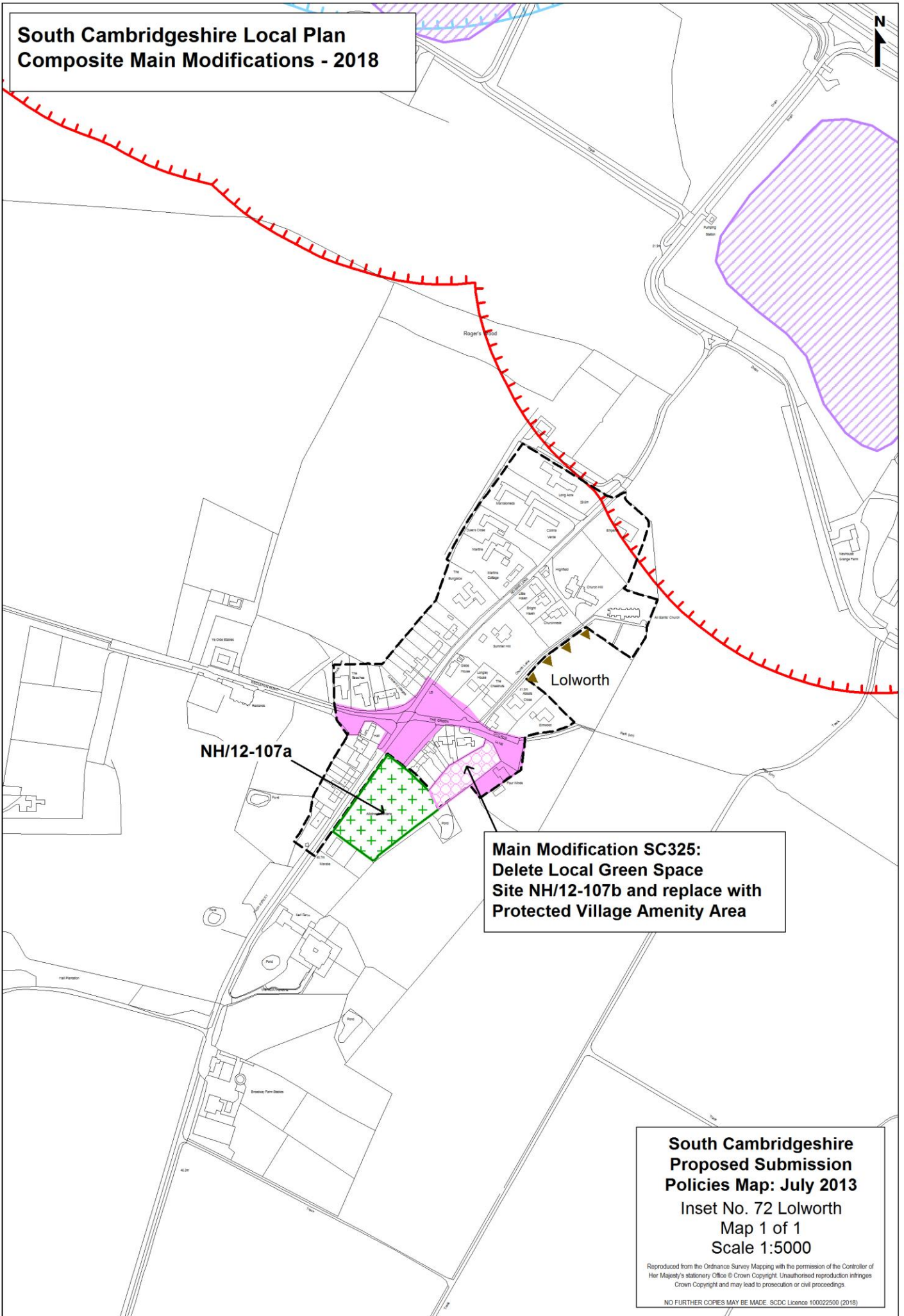


**South Cambridgeshire
Proposed Submission
Policies Map: July 2013
Inset No. 70 Little Shelford
Map 2 of 2
Scale 1:5000**

Reproduced from the Ordnance Survey Mapping with the permission of the Controller of Her Majesty's Stationery Office © Crown Copyright. Unauthorised reproduction infringes Crown Copyright and may lead to prosecution or civil proceedings.

NO FURTHER COPIES MAY BE MADE. SCDC Licence 100022500 (2018)

**South Cambridgeshire Local Plan
Composite Main Modifications - 2018**



**Main Modification SC325:
Delete Local Green Space
Site NH/12-107b and replace with
Protected Village Amenity Area**

**South Cambridgeshire
Proposed Submission
Policies Map: July 2013**
Inset No. 72 Lolworth
Map 1 of 1
Scale 1:5000

Reproduced from the Ordnance Survey Mapping with the permission of the Controller of Her Majesty's Stationery Office © Crown Copyright. Unauthorised reproduction infringes Crown Copyright and may lead to prosecution or civil proceedings.

NO FURTHER COPIES MAY BE MADE. SDCD Licence 100022500 (2018)