

Community Safety in South Cambs

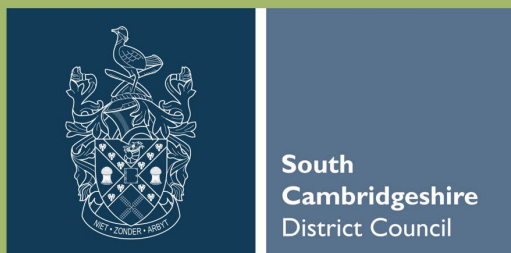


Responsible Authorities:

- Cambs Constabulary
- Cambs Fire & Rescue
- NHS – Health
- National Probation Service
- Local Authorities Tiers 1 & 2
- VCSE (Voluntary, Community, Social Enterprise) – voting partner
- Aligned to the work of the Office of the Police and Crime Commissioner (OPCC)

Crime and Disorder Act 1998

- Collaboration and partnership
- Public, Private, Community & Voluntary organisations
- Data and professional expertise-driven





Through our Operational Plan we aim to:

1. improve resilience in communities across South Cambridgeshire
2. ensure priority areas continue to be driven by data whilst also being informed by professional judgement
3. strive to work in a trauma-informed way to protect those vulnerable to abuse, harassment and violence – including domestic abuse and sexual violence

All of the meetings feed in and out to each other to inform work and update on activity

Community Safety Partnership (CSP) board

- Twice yearly – March and October
- Evidence – Strategic Assessment
- Agree priorities
- Review progress

Delivery Group (DG)

- Twice yearly in alternative quarters from the board
- Evidence – data support / professional judgement
- Decides locations
- Reviews ongoing progress

Problem Solving Groups (PSG)

- Monthly
- Carries out action plans
- Manages cases
- Reports back successes / barriers

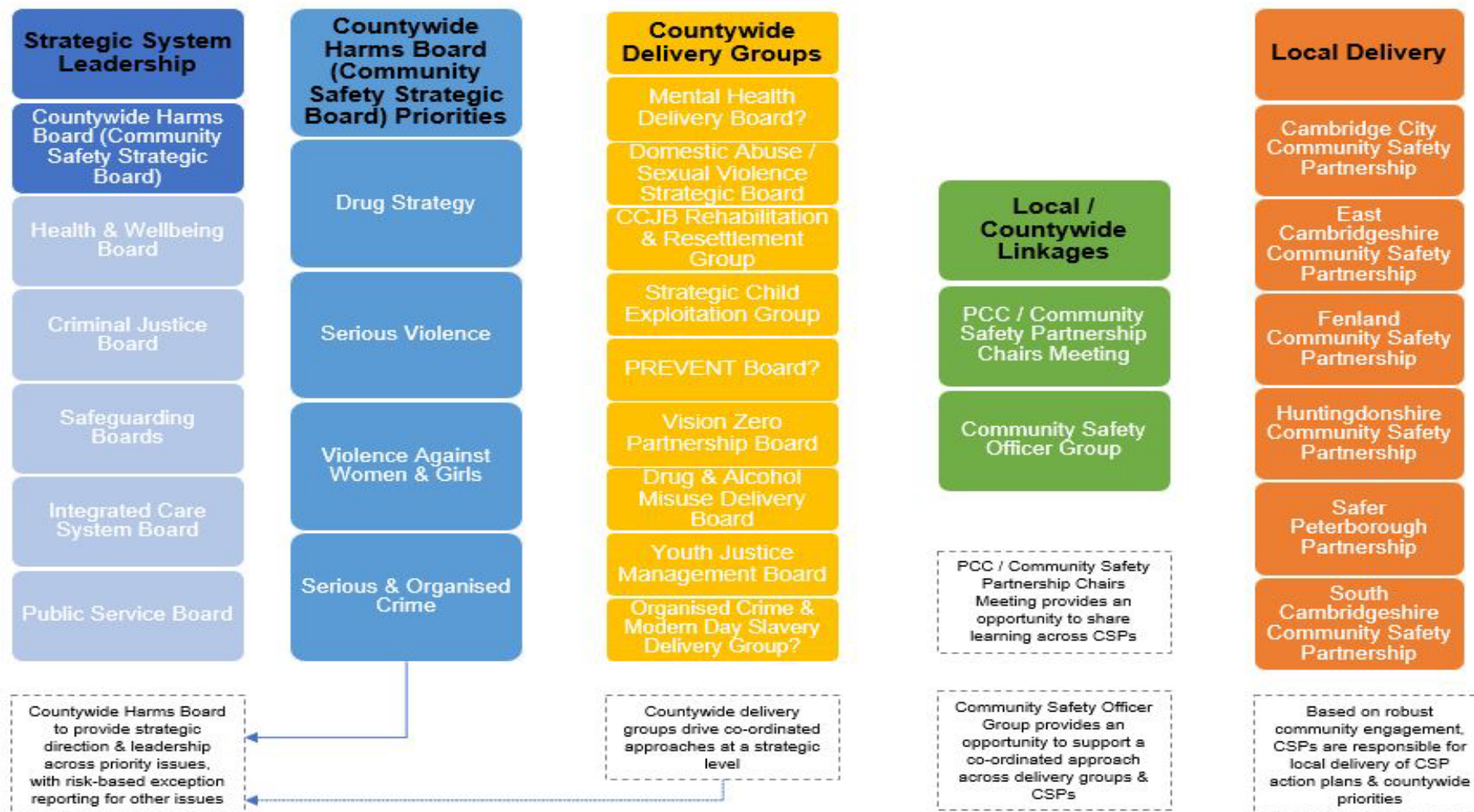


There are 16 duties, the key ones being:

- Carry out an annual strategic assessment – data; evidence-led activity
- Formulate an information sharing agreement
- Have due regard to the Police and Crime Commissioner’s objectives – their Plan
- Formulate and implement a strategy for combatting the misuse of drugs, alcohol, and other substances in the area – local treatment and recovery and interrupting national drug supply
- Formulate and implement a strategy for the reduction of re-offending in the area – Integrated Offender Management scheme, Youth Offending Service and Probation
- Formulate and implement a strategy to prevent and reduce serious violence
- Have due regard to the need to prevent people from being drawn into terrorism - Prevent
- Conduct Domestic Abuse Related Death Reviews
- Engage the local community during the formulation of the strategic assessment and partnership plan – lived experience



Cambridgeshire & Peterborough Countywide Agreement 2022 - 25





The image on the previous slide shows the Cambridgeshire and Peterborough Countywide Agreement 2022-2025 and how the South Cambs Community Safety partnership fits in

Strategic System Leadership

- Countywide Harms Board (Community Safety strategic board).
- The Health and Wellbeing board
- Criminal Justice Board
- Safeguarding boards
- Integrated Care System Board
- Public Services board

Countywide Harms Board

- Drug strategy
- Serious Violence
- Violence against women and girls
- Serious and organised crime.

The Countywide harms board provides strategic direction and leadership across priority issues, with risk-based exception reporting for other issues.

Countywide delivery groups

- Mental health delivery board
- Domestic abuse / sexual violence strategic board
- Community criminal justice board rehabilitation and resettlement group
- Strategic child exploitation group
- Prevent board
- Vision zero partnership board
- Drug and alcohol misuse delivery board
- Youth justice management board
- Organised crime and modern-day slavery delivery group

Countywide delivery groups drive co-ordinated approaches at a strategic level.

Local / countywide linkages

- Police and crime commissioner - community safety partnership chairs meeting - This provides an opportunity to share learning.
- Community safety officer group - this provides an opportunity to support a co-ordinated approach across delivery groups and community safety partnerships.

Local delivery

- Cambridge City Community Safety Partnership
- East Cambridgeshire Community Safety Partnership
- Fenland Community Safety Partnership
- Huntingdonshire Community Safety Partnership
- Safer Peterborough Partnership
- South Cambridgeshire Community Safety Partnership

Based on robust community engagement, Community Safety Partnerships are responsible for local delivery of actions plans and countywide priorities.



- Policy Performance and Intelligence Team provides the annual strategic assessment and quarterly data reviews
- Data Matrix to March 2026 – reviewed at the CSP Board, data explained – rates versus incidents, hotspot mapping, factors that skew figures (e.g. high levels of theft at fuel stations), and where there are increases or decreases, or concerning trends
- Priority areas agreed by the Board - Support Partnerships set up with community safety / resilience matters on the agenda. Or we attend an existing group if there is one and request that community safety be put on the agenda.

Support Partnerships have been set up in:

Milton
Northstowe*
Cambourne
Orchard Park

*Originally set up to address issues relating to the development of the Town – Community Safety is on the agenda

Other areas where pre-existing meetings are attended / supported:

Bassingbourn
Melbourn
Marleigh
Waterbeach

- We also listen to ‘professional concern’ and do targeted work in other areas e.g. water safety



Support Partnerships create community resilience and local ownership of issues, which reach beyond traditional 'community safety'.
A sample of successes:



Car transporter parking issues causing problems during school arrival and drop off in Cambourne



Isolated housing association residents in West Cambourne needing access to information and transport. Links made with housing association to town council and travel coordinator to improve this



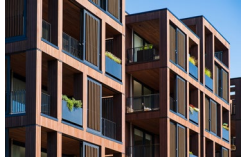
Anti-social driving in Milton at the Park and Ride and in the village. Public Spaces Protection Order (PSPO) implemented for the Park and Ride and police engagement established for noise monitoring in village



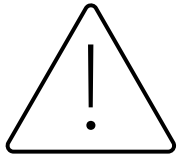
Young people causing anti-social behaviour and attacking a food outlet in Orchard park – development of a Support Partnership to address



Suicide concern area in Milton raised at Rail crossing. Mental health resources collected and links to Network Rail to improve signage crossing point. Community volunteer response options being explored



Local knowledge shared about criminal damage to the ‘Cambourne Soul’ building



Police visit school and youth group to talk about the dangers of going into derelict buildings in Northstowe



Police, Community Safety and Homes England working in partnership on speeding vehicles in Northstowe



Digital provision aligned in Cambourne to complement and avoid duplication



Increase community resilience by educating community leaders on topics such as Hate, Prevent, Domestic Abuse, Cohesion



Partnership action-planning and support for those in need. A sample of the issues presenting:

Children and Family Problem Solving Group

- Risk Outside The Home (ROTH) pathway and contextual safeguarding
- Prevent and radicalisation
- Exploitation (Missing And Criminally Exploited - MACE)
- County Lines / Substance misuse
- Serious Violence Duty and knife crime
- Risk-taking behaviour, Anti-social behaviour, youth offending
- Mental Health
- School attendance / exclusion
- Online safety – Communication networks (COM networks)

Adults Problem Solving Group

- Housing & homelessness
- Mental health & welfare
- Substance misuse
- Crime (various types, and reporting)
- Anti-social behaviour (and reporting)
- Hoarding behaviours
- Domestic Abuse & Sexual Violence
- Liaison with health and mental health services
- Neighbour disputes



Other community safety issues we are involved in:

- Counter Terrorism Local Profile meetings – regional concerns
- Protect - Martyn's Law
- Safer streets – Summer and Winter campaigns to combat Anti-social behaviour
- Court days and Firebreak – events and activities for young people 'at risk'
- Hate crime / community cohesion – e.g. graffiti
- Gypsy, Roma, Traveller sites (static) and encampments (some unauthorised)
- Communications campaigns & web resources
- Serious organised crime and mapping Organised Crime Groups
- Office of Police and Crime Commissioner – Serious Violence Duty
- Communication Networks (COM Networks) – inciting harmful and illegal activity
- Daily contacts – we're seen as a link to police to expedite resolution



Engage the local community during the formulation of the strategic assessment and Operational Plan, via:

- Police survey and quarterly engagement events
- Conferences like this where we can give information and speak to residents about their concerns
- Community Support Partnerships in priority areas, where issues are identified and addressed locally – no two communities are the same
- Community events and fetes – stalls and games
- Social Media
- South Cambs Magazine
- Website asks for views and comments – visit: [South Cambridgeshire Community Safety Partnership Operational Plan 2025-26](#)



Report! Report! Report!

999 in an emergency – underway / immediate danger / risk to life

101 for non-urgent issues

[Report it to the police](#) via various online forms - crime, road traffic accident, domestic abuse, missing person, lost or stolen vehicle

[Notify us](#) of Anti social behaviour, fly tipping, licensing, issues relating to South Cambs District Council tenants

South Cambridgeshire Community Safety - how to get in touch:

[01954 713070](tel:01954713070) – duty number

communitysafety@scambs.gov.uk

Our [community and people section](#) have more resources / information about the work of the Community Safety Partnership