

# Legend

Northstowe Phase 2 development redline boundary

-  Northstowe Phase 2 development redline boundary
-  Potential Bronze Age sites
-  Potential Iron Age sites
-  Potential Romano-British sites
-  Potential Late Saxon and Medieval sites

P1	2014-08-05	DML	DML	DML
Revision	Date	By	Chkd	Appd

# ARUP

Client  
**Homes and Communities Agency**

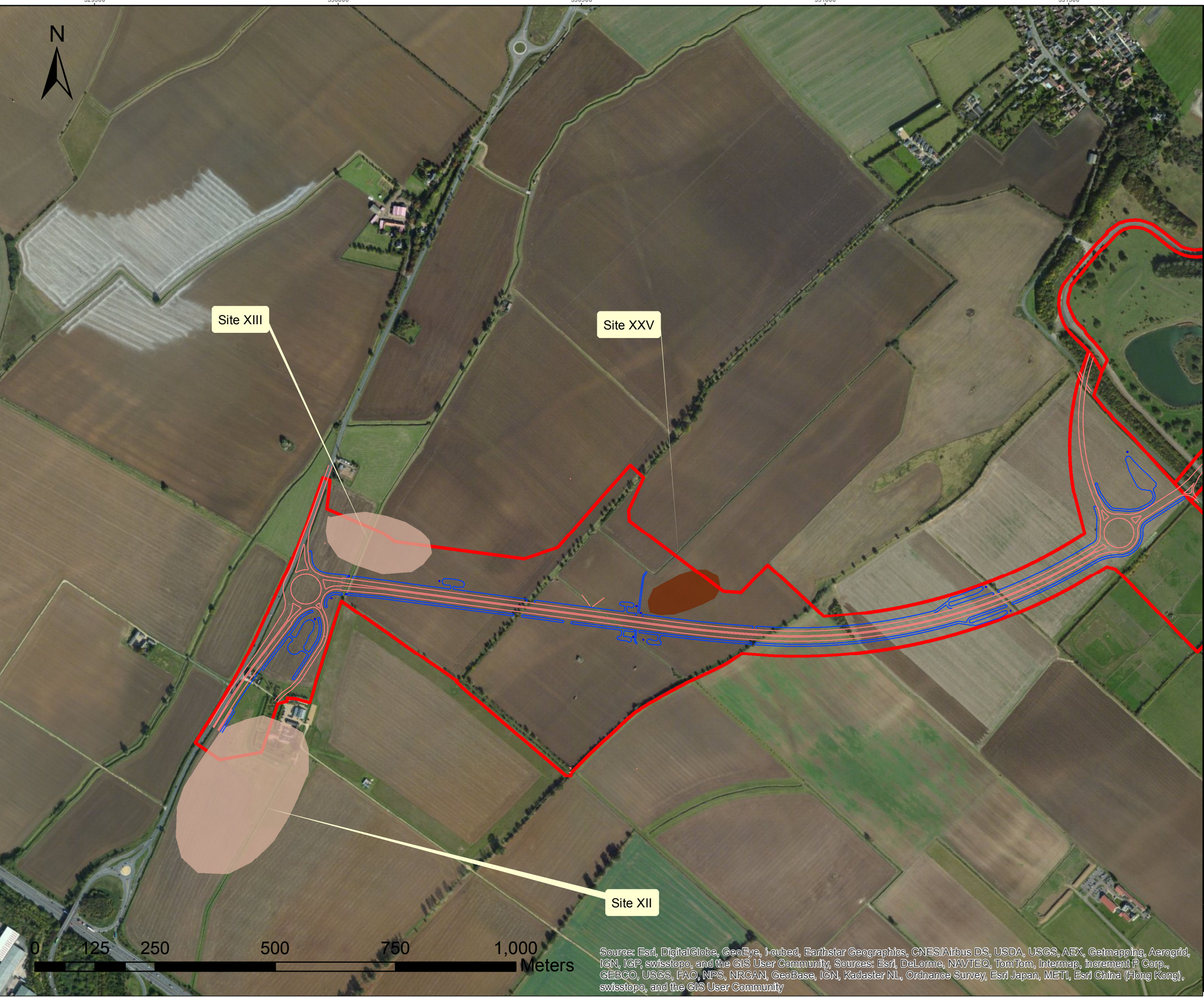
Job Title  
**Northstowe Phase 2**

Drawing Title  
**Figure 9.5 Areas of archaeological activity**

Scale at A3

Job No <b>230781-25</b>	Drawing Status <b>Draft Issue</b>
Drawing No <b>005</b>	Revision <b>P1</b>

Source: Esri, DigitalGlobe, GeoEye, i-cubed, Earthstar Geographics, CNES/Airbus DS, USDA, USGS, AEX, Getmapping, Aerogrid, IGN, IGP, swisstopo, and the GIS User Community



# Legend



Potential Bronze Age sites



Potential Iron Age sites

Northstowe Phase 2 development redline boundary



P1	2014-08-18	DML	DML	DML
----	------------	-----	-----	-----

Revision	Date	By	Chkd	Appd
----------	------	----	------	------

# ARUP

Client  
**Homes and Communities Agency**

Job Title  
**Northstowe Phase 2**

Drawing Title  
**Figure 9.6 Southern Access Road and areas of archaeological activity**

Scale at A3

Job No <b>230781-25</b>	Drawing Status <b>Draft Issue</b>
----------------------------	--------------------------------------

Drawing No <b>006</b>	Revision <b>P1</b>
--------------------------	-----------------------

Source: Esri, DigitalGlobe, GeoEye, i-cubed, Earthstar Geographics, CNES/Airbus DS, USDA, USGS, AEX, Getmapping, Aerogrid, IGN, IGP, swisstopo, and the GIS User Community, Sources: Esri, DeLorme, NAVTEQ, TomTom, Intermap, increment P Corp., GEBCO, USGS, FAO, NPS, NRCAN, GeoBase, IGN, Kadaster NL, Ordnance Survey, Esri Japan, METI, Esri China (Hong Kong), swisstopo, and the GIS User Community