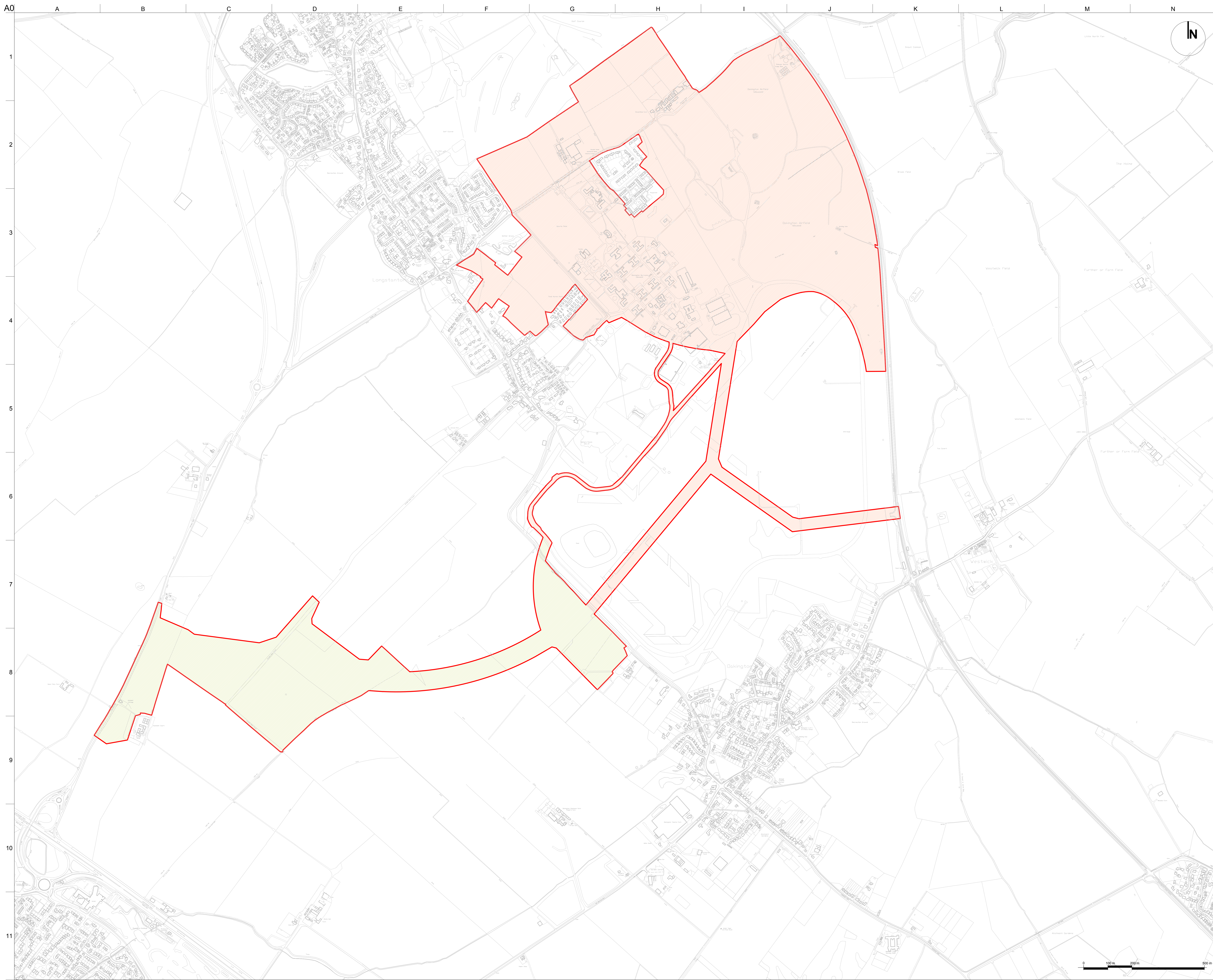




# NORTHSTOWE PHASE 2 PLANNING APPLICATION

Environmental Statement (Volume III)  
Introduction (Chapter 1) Figures

August 2014



**LEGEND**

- PHASE 2 - MAIN PHASE 2 DEVELOPMENT AREA
- PHASE 2 - SOUTHERN ACCESS ROAD (WEST)

Issue	Date	By	Chkd	Appd
A	22.08.2014	BC	NW	NW

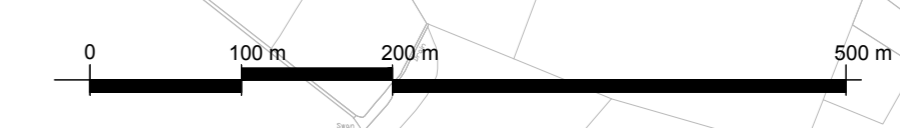
**DESIGN TEAM:**  
 ARUP  
 13 Fitzroy Street  
 London W1T 4BQ  
 +44 (0)20 7638 1531  
 www.arup.com  
 Client  
**Homes and Communities Agency**

Job Title  
**NORTHSTOWE  
 PHASE 2 PLANNING APPLICATION**

Drawing Title  
**FIGURE 1.1  
 APPLICATION AREAS PLAN**

Scale **1:5,000 @ A0**  
 Discipline **URBAN DESIGN**

Drawing Status  
**FOR PLANNING**  
 Job No **230781-21** Drawing No **PLAN 3** Issue **A**



I:\Global\arup.com\london\PT\C\IC...\_JOB\230000\230781 Northstowe Phase 2 Planning Application\22\_23\_24\_APP\PREP\Internal\3\_A\LIC\SUBMISSION DRAWINGS\NS-AUL-03-01\_Application Areas Plan.dwg 7 Aug 2014 17:29:50 by: 8ECCB92-240C-4DBE-B8A4-A4FF646748D\_bea.canada



# NORTHSTOWE PHASE 2 PLANNING APPLICATION

Environmental Statement (Volume III)  
Proposed Development (Chapter 3) Figures

August 2014

PHASE 1

- LEGEND**
- PHASE 2 APPLICATION 1 BOUNDARY
  - RESIDENTIAL: UP TO 11m (UP TO 3 STOREYS)
  - RESIDENTIAL: UP TO 14.5m (UP TO 4 STOREYS)
  - RESIDENTIAL: UP TO 18.5m (UP TO 5 STOREYS)
  - TOWN CENTRE: UP TO 18.5m (UP TO 5 STOREYS)
  - SCHOOL: UP TO 9m (UP TO 2 STOREYS)
  - SCHOOL: UP TO 12m (UP TO 3 STOREYS)
  - SPORTS HUB: UP TO 9m (UP TO 2 STOREYS)

**NOTE:**  
 (i) BUILDING HEIGHTS ABOVE PROPOSED GROUND LEVEL.  
 (ii) THE MINIMUM STOREY HEIGHT IS SINGLE STOREY.

Issue	Date	By	Chkd	Appd
A	22.08.2014	BC	NW	MS

**DESIGN TEAM:**  
 ARUP  
 13 Fitzroy Street  
 London W1T 4BQ  
 +44 (0)20 7638 1531  
 www.arup.com  
 Client  
**Homes and Community Agency**

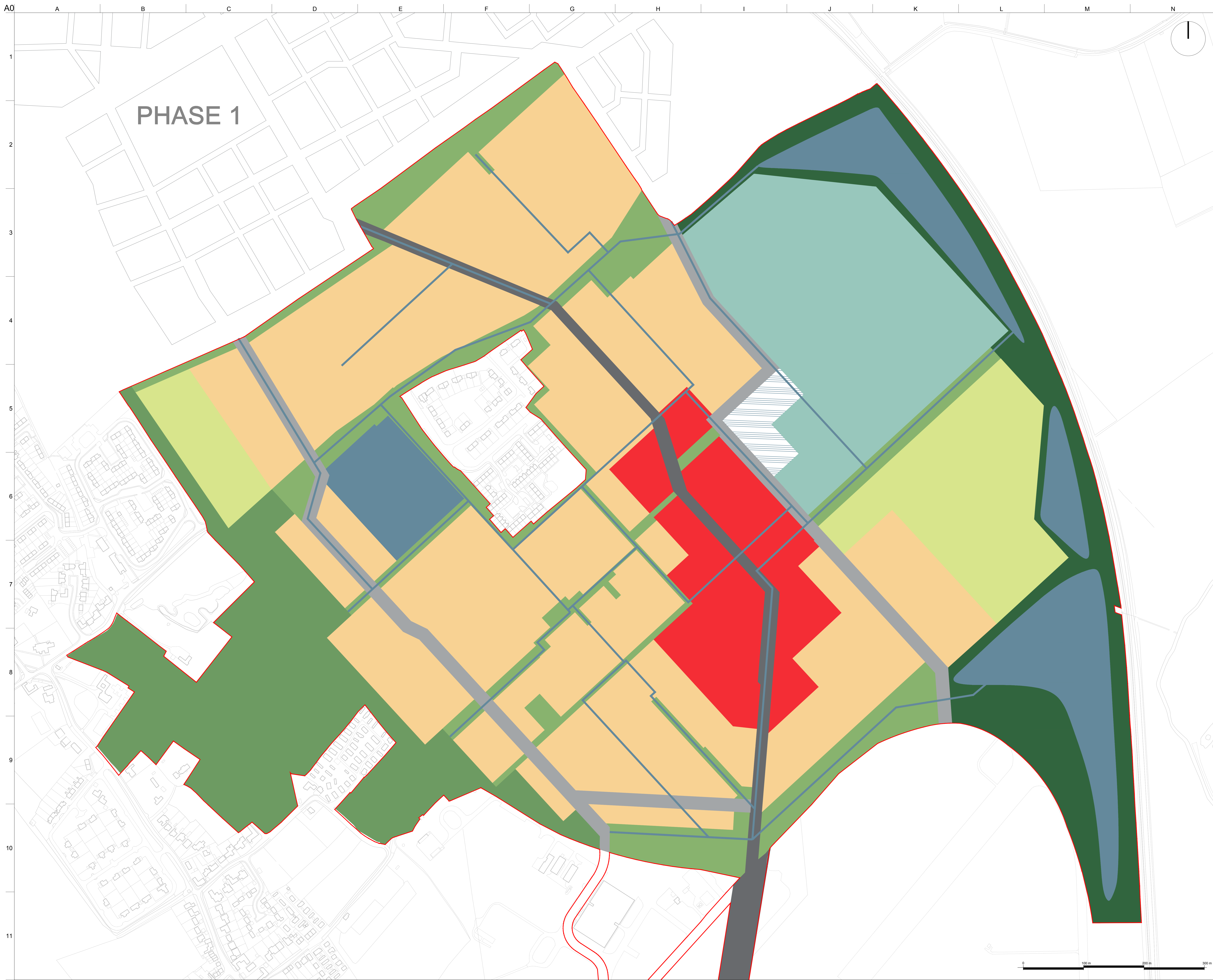
Job Title  
**NORTHSTOWE  
 PHASE 2 PLANNING APPLICATION**

Drawing Title  
**FIGURE 3.1  
 BUILDING HEIGHTS  
 PARAMETER PLAN**

Scale 1:2,000 @ A0  
 Discipline **URBAN DESIGN**  
 Drawing Status  
**FOR PLANNING**  
 Job No **230781-21** Drawing No **PLAN 9** Issue **A**



I:\G:\a\arup.com\london\PTG\C\I\JOBS\230000\230781 Northstowe Phase 2 Planning Application\23\_24\_APP1\_PREP4 Internal\3 AUL\CAD\SUBMISSION DRAWINGS\ANSI-AUL-09-01\_Building Heights Plan.dwg 5 Aug 2014 11:49:01 id:4E1651BC-E430-44ED-A55C-69197A71E1 bea.canada



- LEGEND**
- PHASE 2 APPLICATION BOUNDARY
  - RESIDENTIAL
  - TOWN CENTRE (INCLUDING RESIDENTIAL)
  - SCHOOL (PRIMARY AND SECONDARY)
  - SCHOOL OR RESIDENTIAL
  - GREEN SEPARATION
  - GREENWAY
  - WATER PARK
  - SPORTS HUB
  - BUSWAY CORRIDOR
  - PRIMARY ROAD CORRIDOR
  - ATTENUATION PONDS
  - SWALES

Issue	Date	By	Chkd	Appd
A	22.08.2014	BC	NW	MS

**DESIGN TEAM:**  
 ARUP  
 13 Fitzroy Street  
 London W1T 4BQ  
 +44 (0)20 7638 1531  
 www.arup.com  
 Client  
**Homes and Communities Agency**

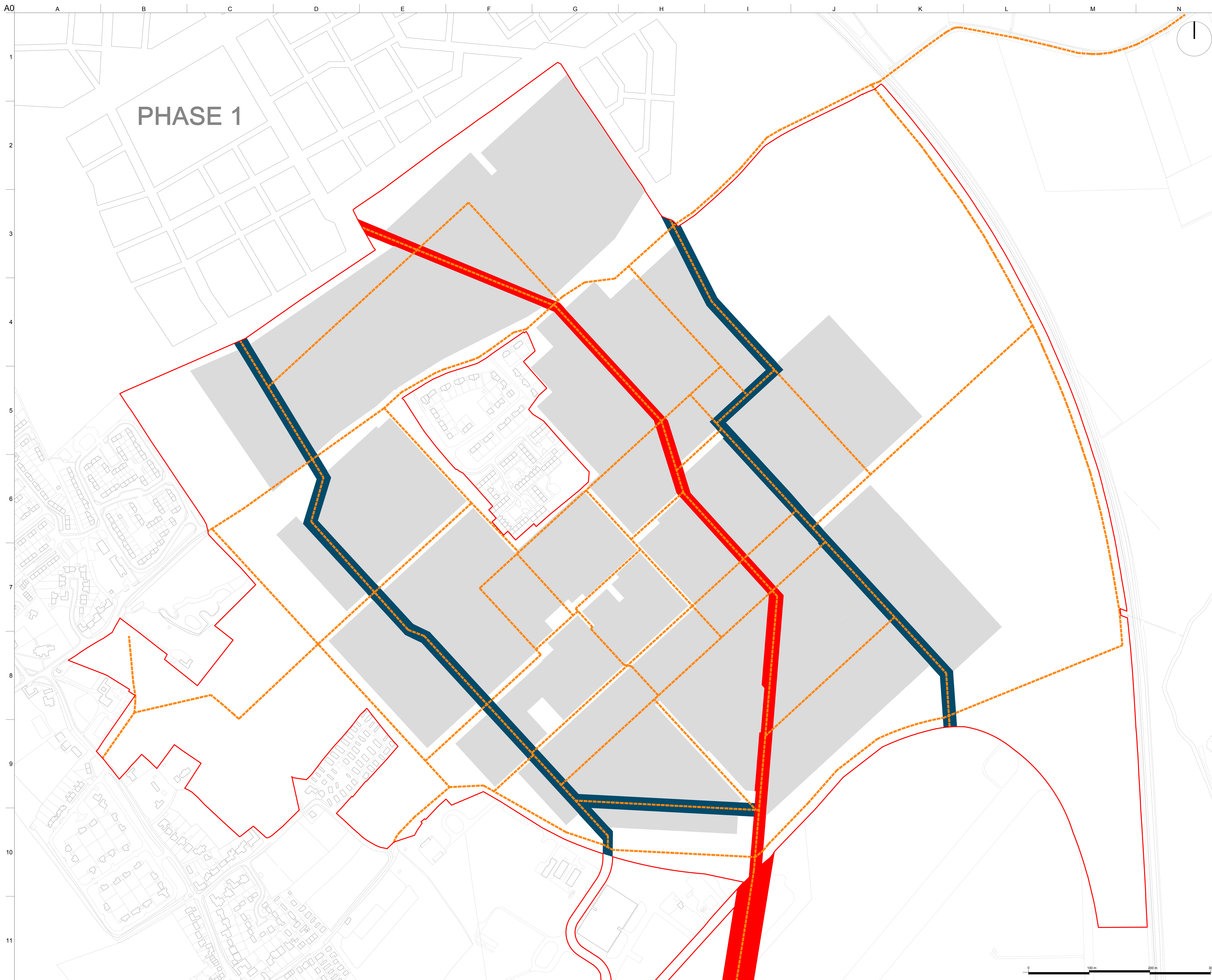
Job Title  
**NORTHSTOWE  
 PHASE 2 PLANNING APPLICATION**

Drawing Title  
**FIGURE 3.2  
 LAND USE PARAMETER PLAN**

Scale **1:2,000 @ A0**  
 Discipline **URBAN DESIGN**  
 Drawing Status  
**FOR PLANNING**  
 Job No **230781-21** Drawing No **PLAN 6** Issue **A**







PHASE 1

- LEGEND**
- PHASE 2 APPLICATION BOUNDARY
  - DEVELOPMENT AREAS (INCLUDING SCHOOLS AND EASTERN SPORTS HUB)
  - PROPOSED BUSWAY CORRIDOR
  - PROPOSED PRIMARY ROAD CORRIDOR
  - PROPOSED PRINCIPAL CYCLE / PEDESTRIAN ROUTES (ON AND OFF ROAD)

NOTE: INDICATIVE LOCATION OF CYCLEWAYS WITHIN ROAD CORRIDORS IS SET OUT IN THE DESIGN AND ACCESS STATEMENT.

Issue	Date	By	Chkd	Appd
A	22.08.2014	BC	NW	MS

**DESIGN TEAM:**  
 ARUP  
 13 Fitzroy Street  
 London W1T 4BQ  
 +44 (0)20 7638 1531  
 www.arup.com  
 Client  
**Homes and Communities Agency**

Job Title  
**NORTHSTOWE  
 PHASE 2 PLANNING APPLICATION**

Drawing Title  
**FIGURE 3.5  
 MOVEMENT AND ACCESS  
 PARAMETER PLAN**

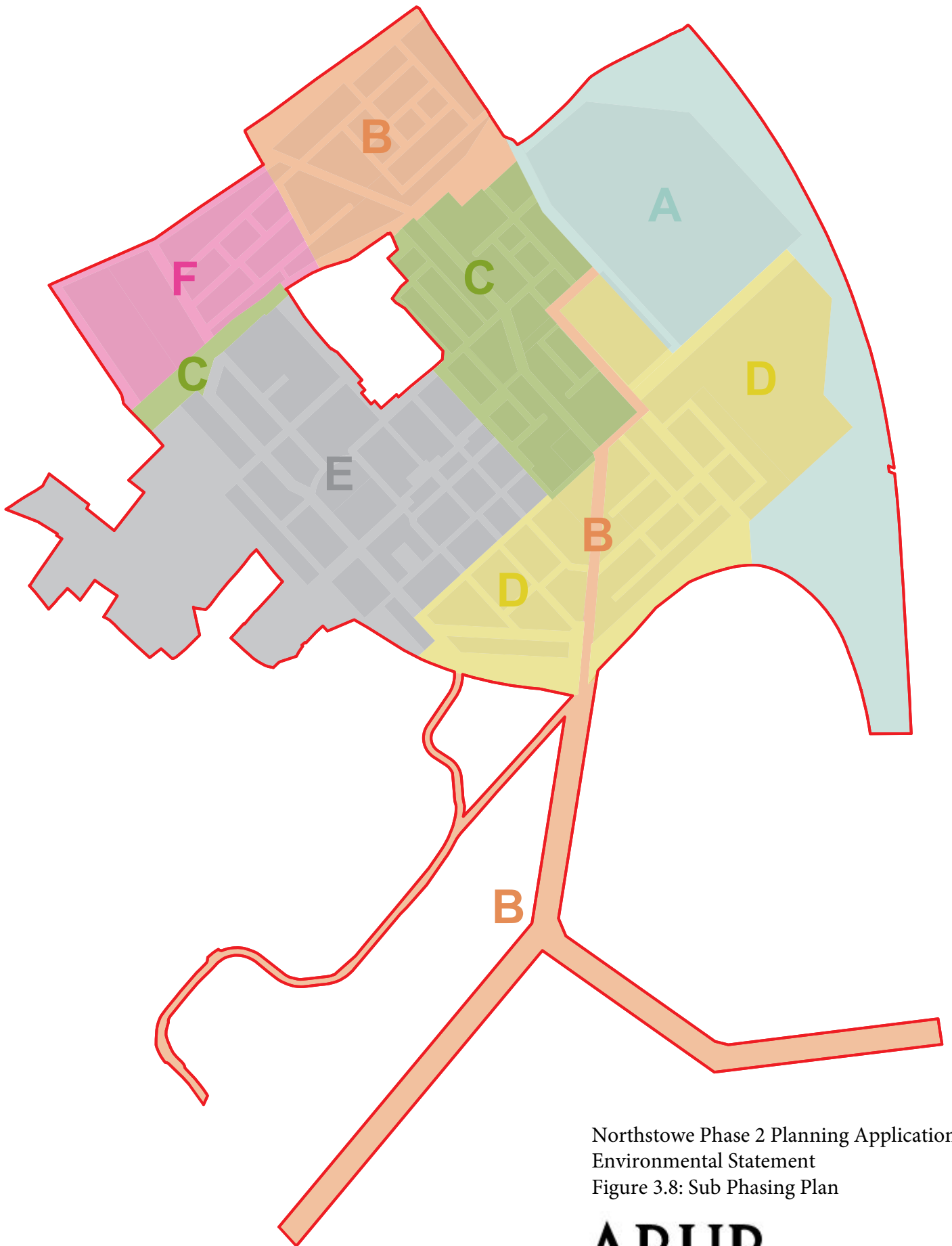
Scale 1:2,000 @ A0  
 Discipline **URBAN DESIGN**

Drawing Status  
**FOR PLANNING**  
 Job No **230781-21** | Drawing No **PLAN 8** | Issue **A**

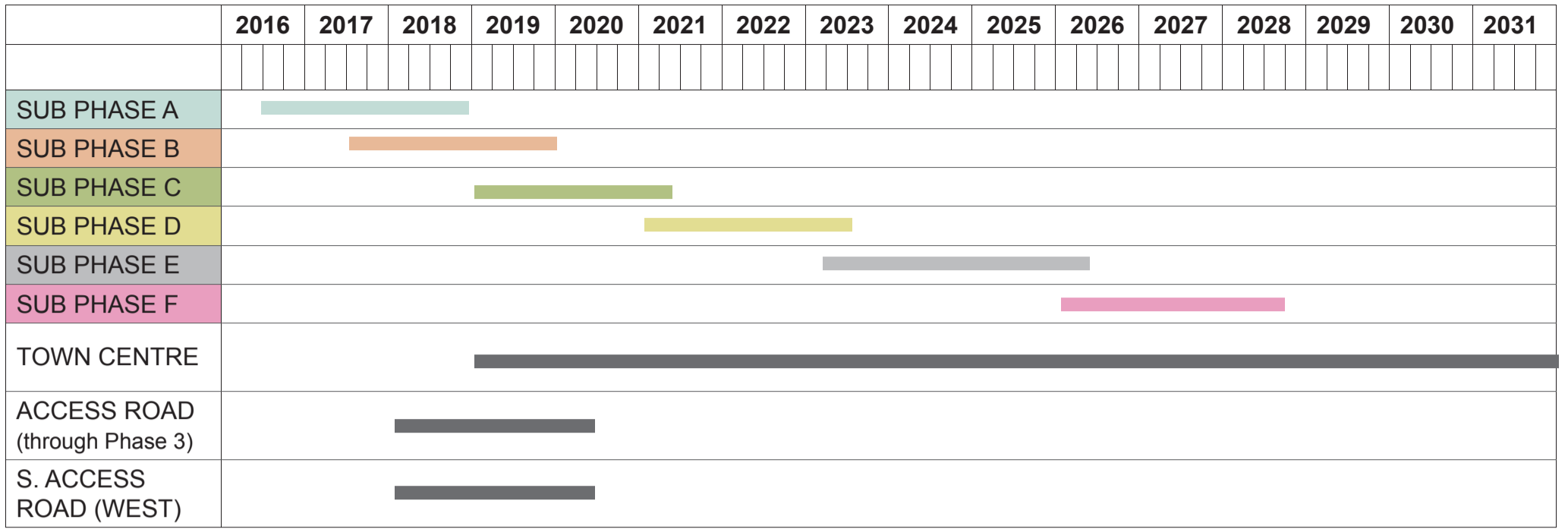


I:\global\arup\combination\PT\C\IC\JOB\230000\230781 Northstowe Phase 2 Planning Application\22\_23\_24\_APP\PREP\Internals\A\LIC\SUBMISSION\DRAWINGS\NS-AUL\_08-01\_Movement and Access Plan.dwg 5 Aug 2014 11:47:46 id: 88BE19FE-6688-4E34-9C7D-0DC031827C bea.canada





Northstowe Phase 2 Planning Application  
Environmental Statement  
Figure 3.8: Sub Phasing Plan



Northstowe Phase 2 Planning Application  
 Environmental Statement  
 Figure 3.9: Construction Programme

