

7.2

Application of the design principles to the scheme

The design principles, detailed in Section 6, have been applied to the schemes, as set out below.

- Confident edge
- Well defined built edges

- Integrated landscape
- Establishing critical distance and finer urban grain
- Open space

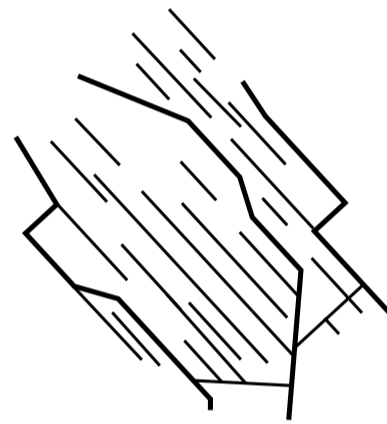
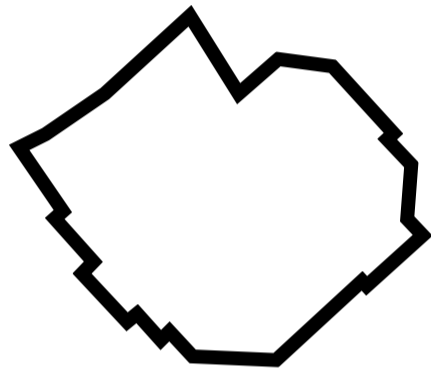
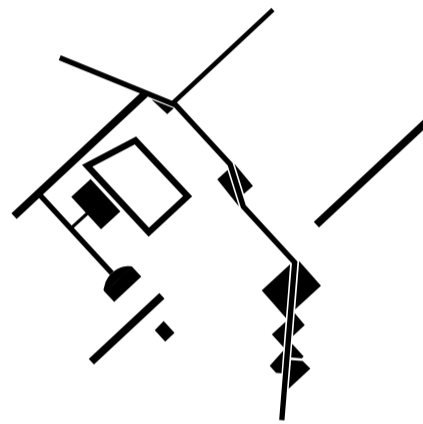
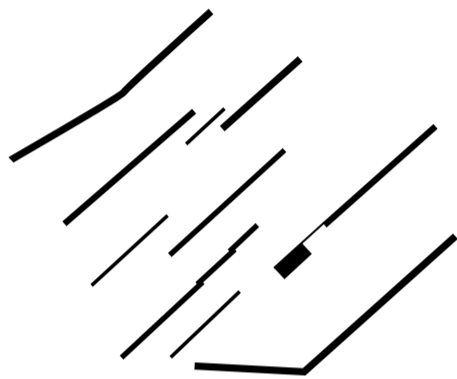


FIGURE 7.2: APPLICATION OF THE DESIGN PRINCIPLES

- Environmentally optimised grid
- Dual access

- Eccentricities of the site
- Integration of car parking



7.3

N Character areas

Local townscape characteristics should be promoted by the architecture of Northstowe Phase 2. A contemporary interpretation of vernacular architecture and use of materials should inform the design of homes and other buildings in order to achieve an attractive place that is well integrated with the existing context.

The architecture of Northstowe should fulfil high environmental and sustainability standards, as well as help reduce carbon emissions. The housing mix for Northstowe Phase 2 predominantly comprises apartment, terraced, semi-detached and detached dwelling units.

The architectural design for civic buildings should strengthen their character as landmark elements across the development.

Four areas in the proposed Phase 2 site have been selected to show more detail about the potential character, form and function, based on the key parameters to be set through the outline application:

- Town centre (busway);
- Town Square;
- Rampton Drift Edge;
- Former Barracks residential area.

The character areas are only illustrative as further design would need to be undertaken at a future detailed planning stage.

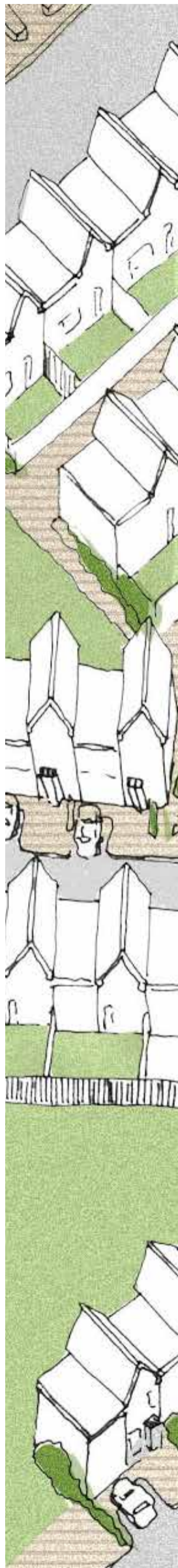


FIGURE 7.3: CHARACTER AREAS

