

Appendix D

Public Consultation

D1 Staffed Public Exhibition Boards

THINGS ARE HAPPENING AT NORTHSTOWE

The Homes and Communities Agency (HCA) would like your input on the exciting next phase of Northstowe.

The HCA is proposing to submit three separate planning applications relating to Northstowe in the summer of 2014. The planning applications are likely to be for:

–An outline plan for the next phase of the new town, including the town centre, secondary school, two primary schools and approximately 3,500 new homes.

–Two separate access roads to the south of the development:
The Southern Access Road (West)
The Southern Access Road (East)

These planning applications will be determined by the Northstowe Joint Development Control Committee (NJDCC), the local group of Councillors responsible for assessing Northstowe planning applications.

HAVE YOUR SAY

We would like your views on the proposals to inform the planning applications that will be submitted.

YOU CAN PROVIDE YOUR COMMENTS BY:

Completing a comment form available at this exhibition

or

Completing an online form at www.northstowe.com

NEXT STEPS

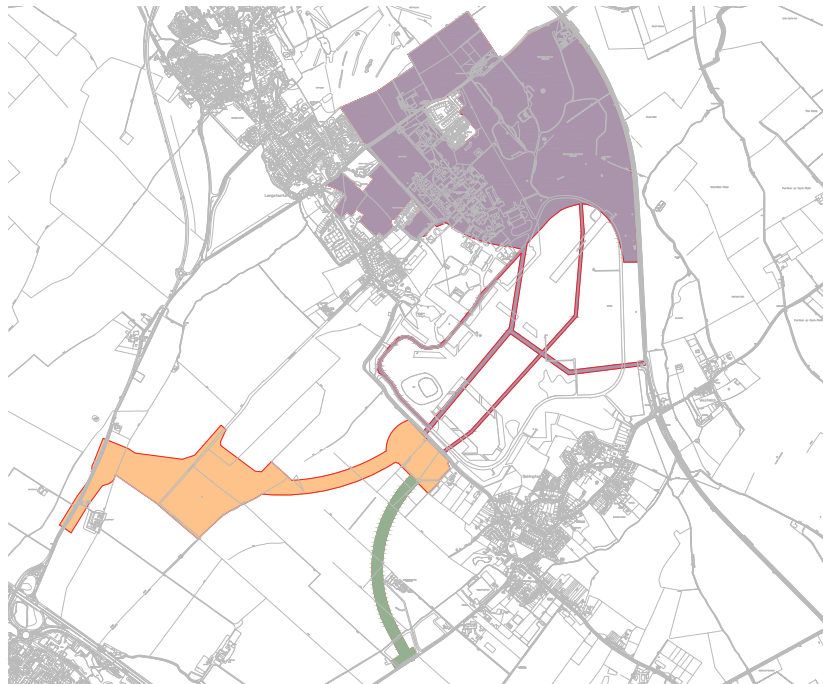
All the feedback received as part of this consultation will be reviewed and analysed to help inform the final applications to be submitted this summer.

PLEASE SUBMIT YOUR COMMENTS TO US BY
Friday 4 April 2014

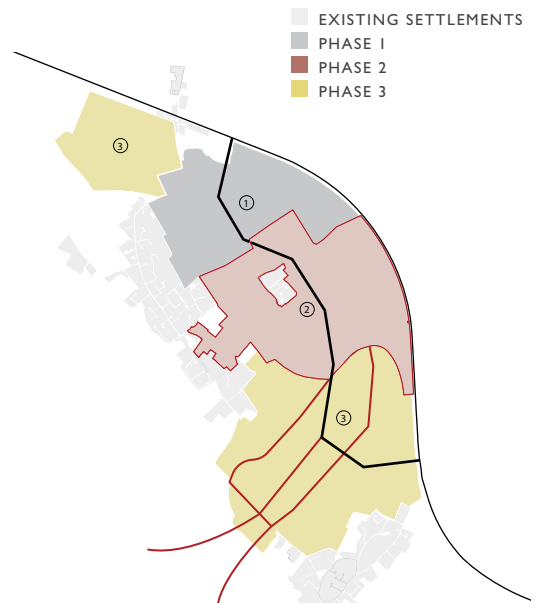
THANK YOU FOR TAKING PART



WHAT ARE THE PLANS FOR THE NEXT PHASE?



- PHASE 2 APPLICATION 1 BOUNDARY
- PHASE 2 APPLICATION 2 BOUNDARY
- PHASE 2 APPLICATION 3 BOUNDARY



The proposals for the next stage of development at Northstowe have been designed in accordance with the vision and ambitions set out in the Northstowe Development Framework Document (DFD). This document was developed by the partners, and explains the overall vision for Northstowe and its development

The HCA expects to submit three planning applications and would like your views on each of them.

ONE

An outline planning application covering an area of approximately 159 hectares and including:

- Approximately 3,500 new homes
- Two primary schools, and a secondary school
- The town centre including employment areas
- Recreation space and landscaped areas
- A new eastern sports hub
- The remaining part of the western sports hub
- Three primary roads linking to the southern access road and the busway running to the south of the site, engineering and infrastructure works.

TWO

The Southern Access Road (West), to Hattons Road and Bar Hill, and the associated junction including landscaping and drainage.

THREE

The Southern Access Road (East) to link to the Dry Drayton Road including landscaping and drainage.

