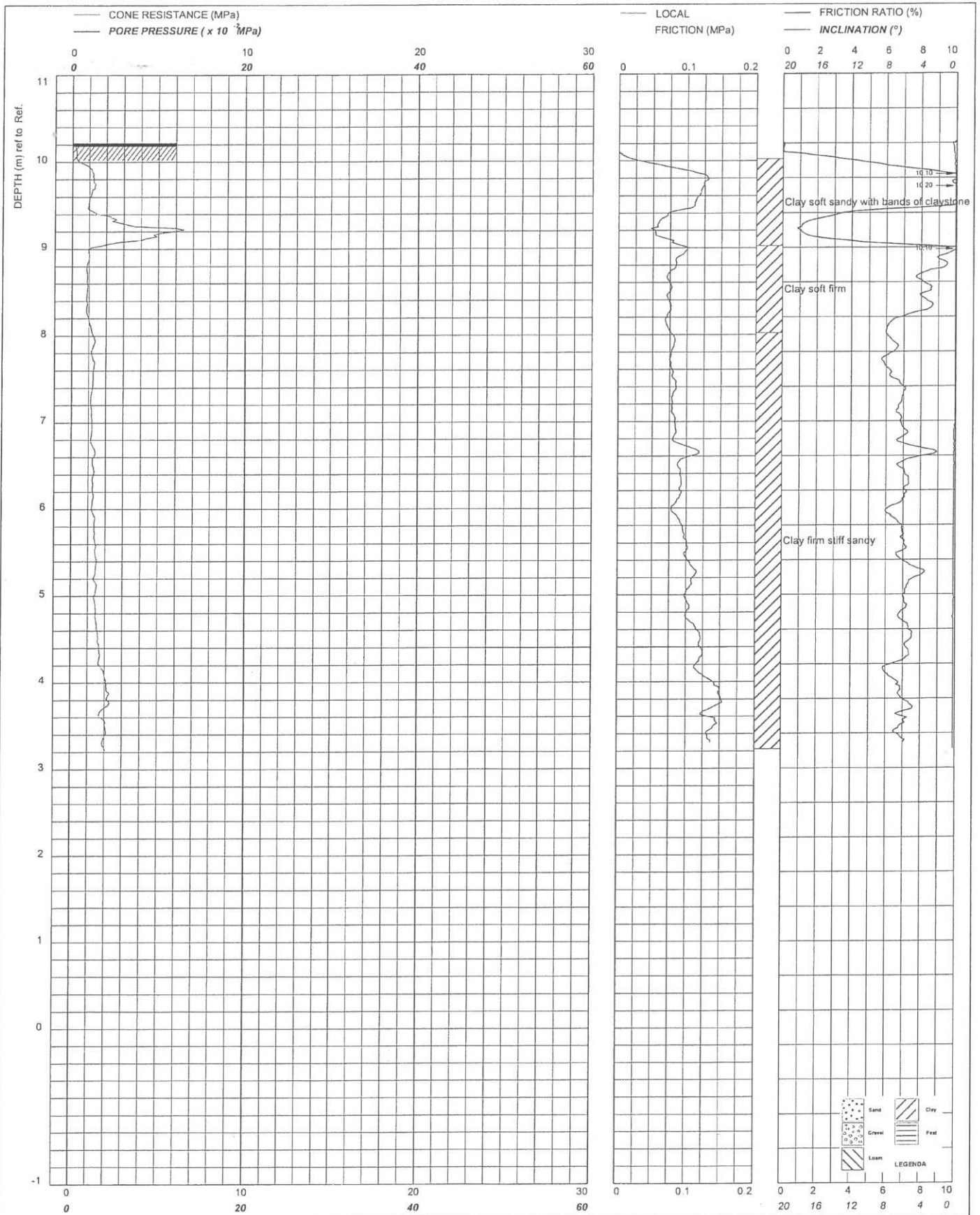
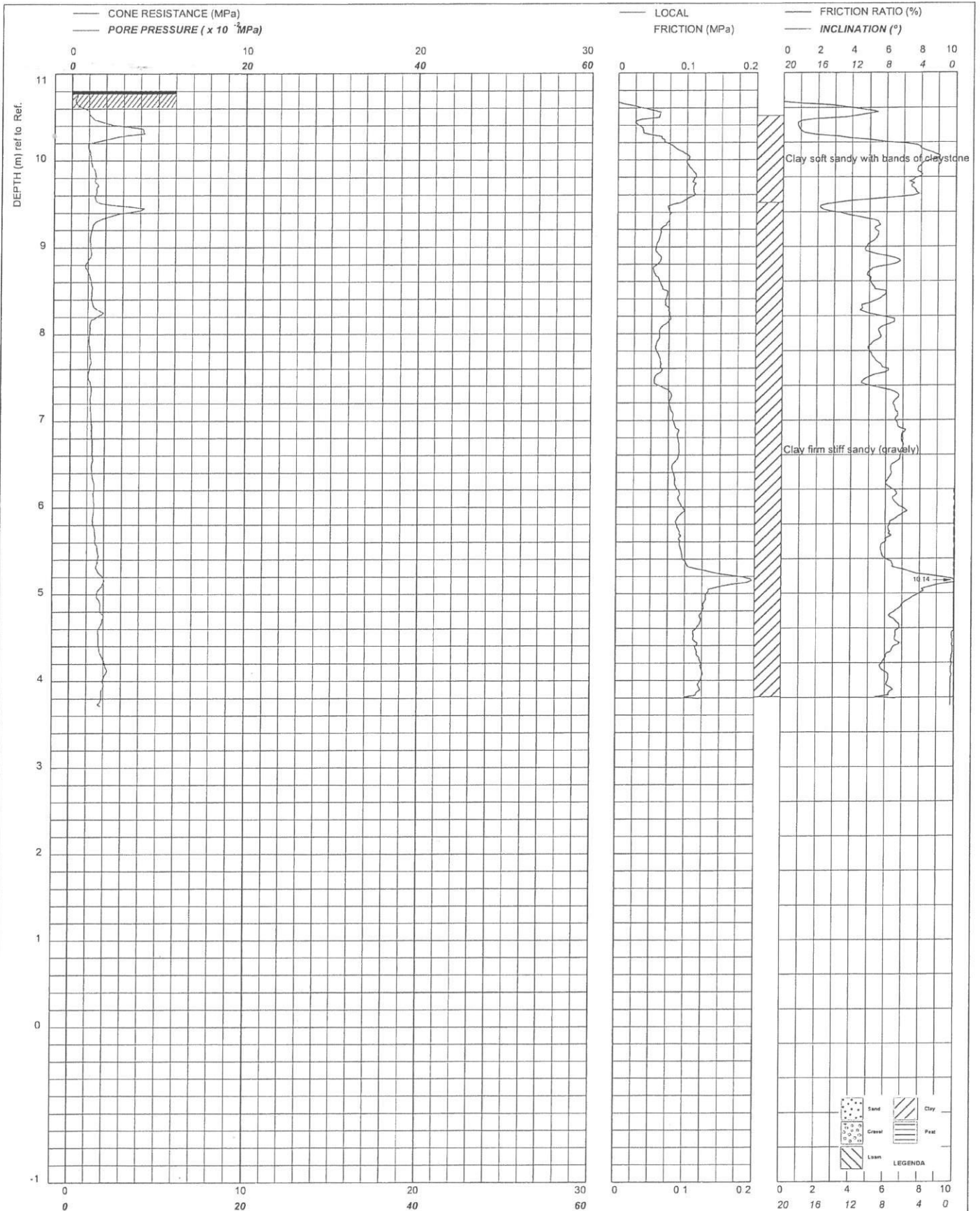


ANNEX C

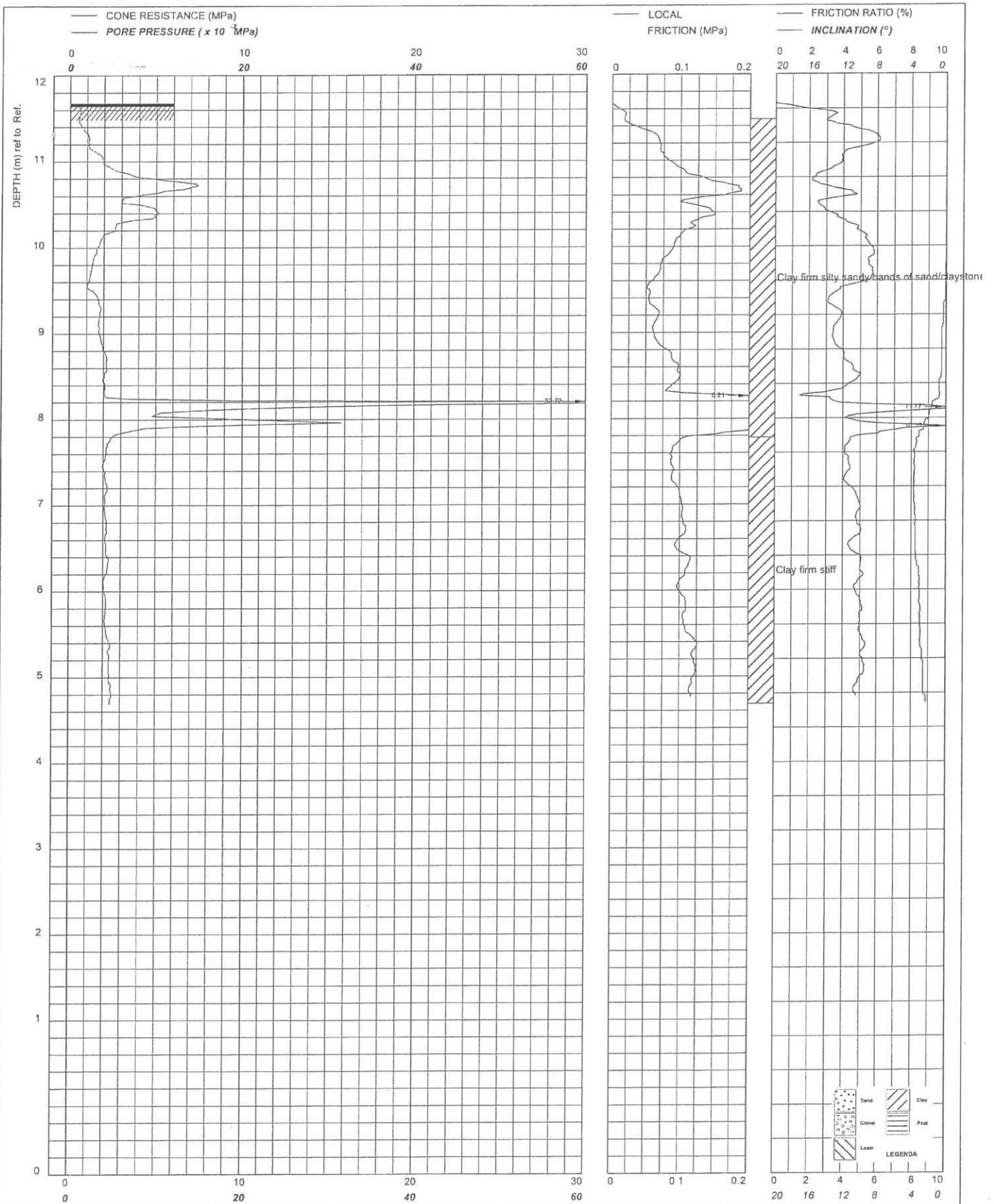
CPT SURVEY GRAPHS



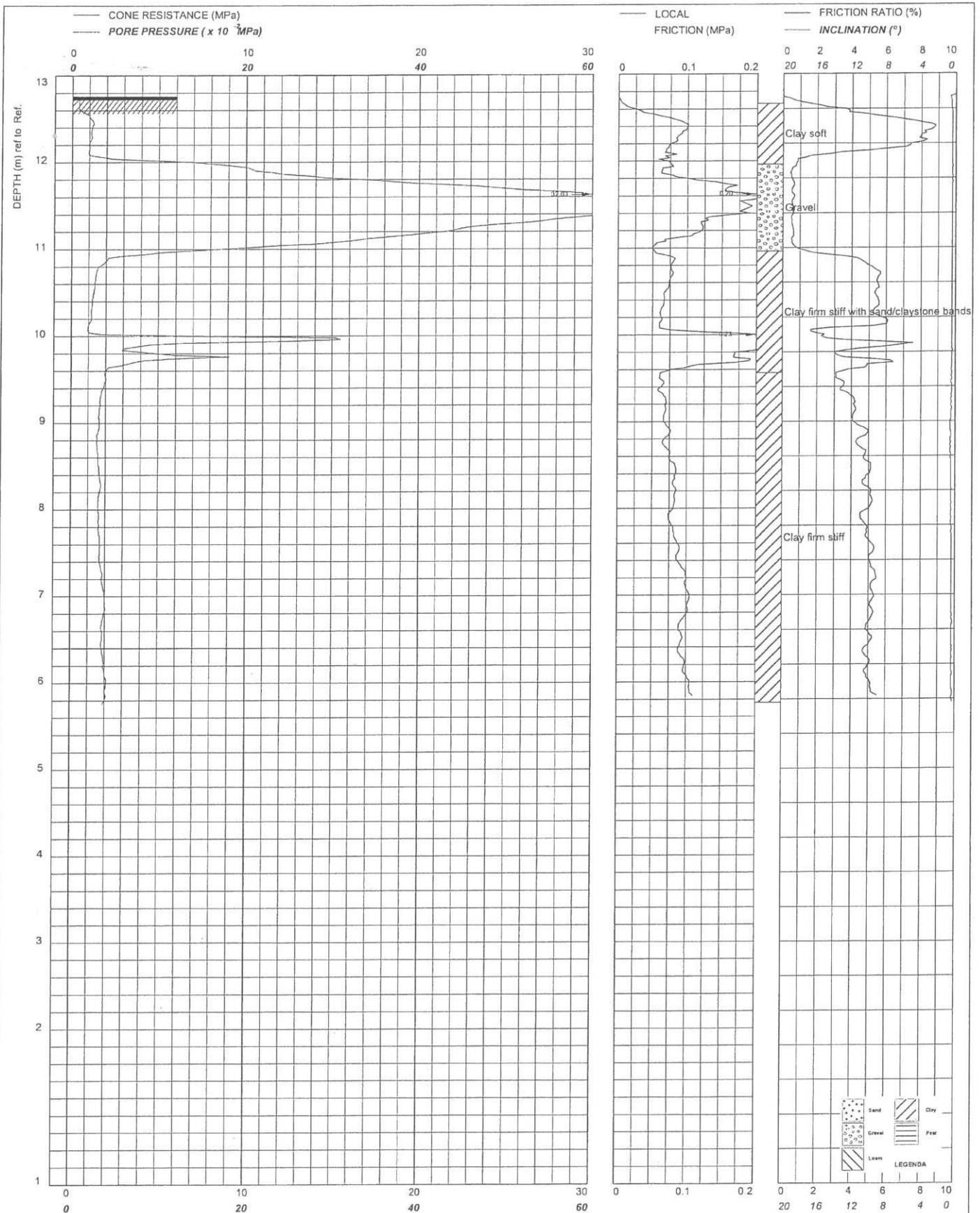
 De Ruiters Boringen en Gemaltingen bv	CPT type CFI NEN 5140 class 2 Cone tip surface : 1000 mm ²		GL	10.221 m Ref.	E	53923.0700	Project
	Bactec RAF Oakington		KM		N	26578.5800	5584021-A
		Testdate	26-9-2005				Location-code
PO Box 14 1160 AA Zwanenburg The Netherlands Phone +31 (0)20 4072100/ Fax +31 (0)20 4072114		Printdate	03-10-2005				D-02



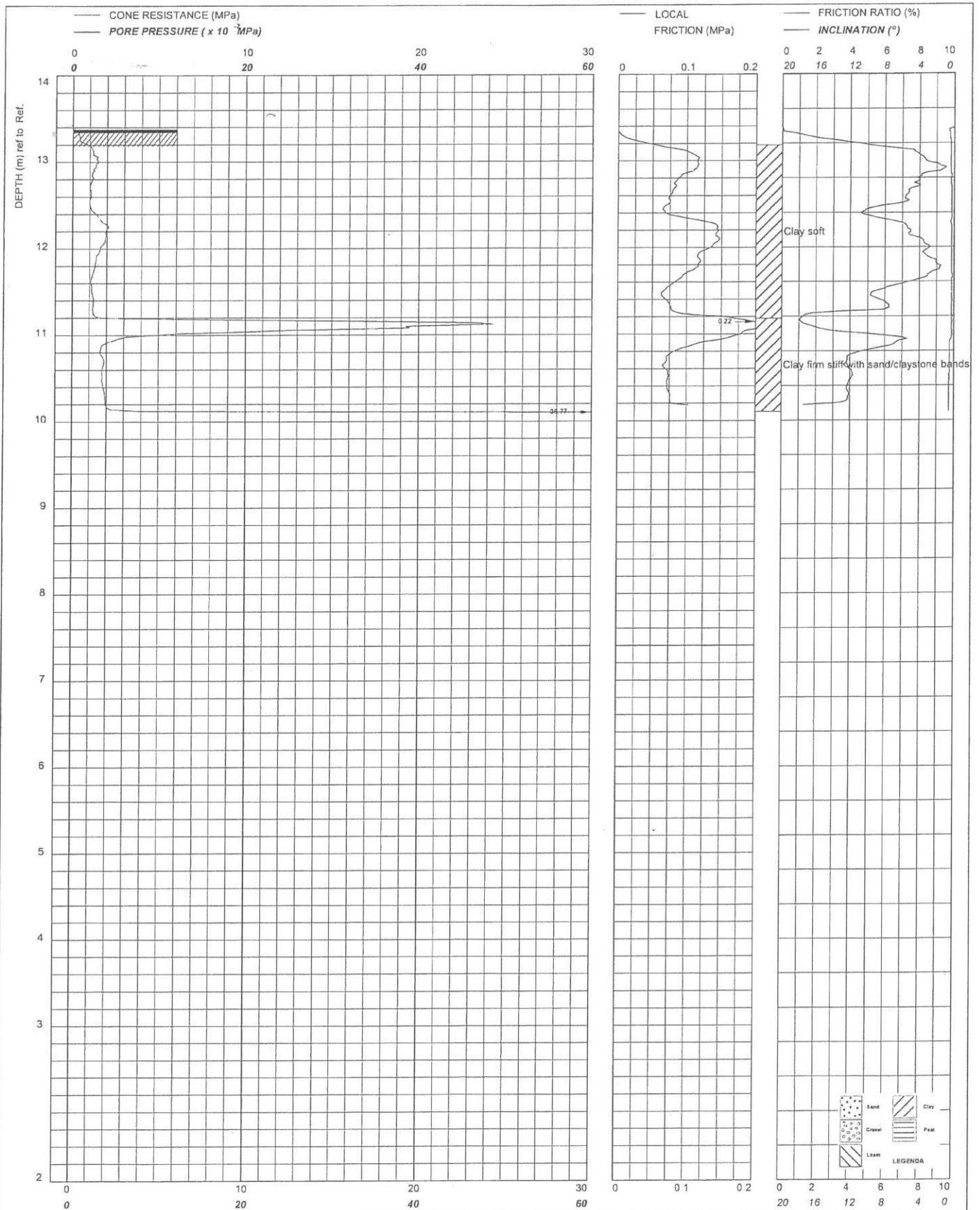
 De Ruiter Boringen en Bemalingen bv	CPT type CFI NEN 5140 class 2 Cone tip surface : 1000 mm ²		GL	10.81 m Ref	E	53908.9700	Project	5584021-A
	Bactec RAF Oakington		KM		N	26556.7000	Location-code	D-03
		Testdate			26-9-2005			
PO Box 14 1160 AA Zwanenburg The Netherlands Phone +31 (0)20 4072100/ Fax +31 (0)20 4072114		Printdate			03-10-2005			



 De Ruiter Boringen en Bemalingen bv	CPT type CFI NEN 5140 class 2 Cone tip surface : 1000 mm ²		GL	11.68 m Ref.	E	53925.7900	Project
	Bactec RAF Oakington		KM		N	26548.7900	5584021-A
PO Box 14 1160 AA Zwanenburg The Netherlands Phone +31 (0)20 4072100 Fax +31 (0)20 4072114		Testdate		26-9-2005		Location-code	
		Printdate		03-10-2005		D-04	



 De Ruiters Boringen en Bemalingen bv	CPT type CFI NEN 5140 class 2 Cone tip surface : 1000 mm ²	GL	12.76 m Ref.	E	53985.8900	Project	5584021-A
		KM		N	26524.0300	Location-code	
Bactec RAF Oakington		Testdate			26-9-2005	Location-code	
		Printdate			03-10-2005	D-05A	



 De Ruiters Boringen en Bemalingen bv	CPT type CFI NEN 5140 class 2 Cone tip surface : 1000 mm ²	GL	13.38 m Ref	E	53994	Project	5584021-A
		KM		N	26505	Location-code	D-06A
PO Box 14 1160 AA Zwanenburg The Netherlands Phone +31 (0)20 4072100/ Fax +31 (0)20 4072114	Bactec RAF Oakington	Testdate		26-9-2005		Location-code	
		Printdate		03-10-2005		D-06A	

ANNEX D Ground Gas and Groundwater Monitoring Data

Groundwater and Ground Gas Monitoring Form



VISIT 1

Site Name	Northstowe
Client	Gallagher Estates
Job No.	12170626/002
Date	01/02/06 - 03/02/06
Start Time	
End Time	

Operator	LF/CW
Pressure at Start mB	1028
Pressure at End mB	1028
Weather Conditions	Cloudy/Cold/Dry
Temperature oC	

Equipment	Serial No.	Calibrated
Gas Analyser	GA2000	Yes
Dipmeter	30m	N/A
Interface Probe		
PID		

	Borehole	Response Zone (m)		Gas Flow (l/hr)		Borehole Pressure (mB)	Methane (% v/v)		Carbon Dioxide (% v/v)		Oxygen (% v/v)		Other Gasses (ppmV)			Depth to Water (m)	Depth to Base (m)	Thickness of product (mm)	Sampled? (Y/N)
		Top	Bottom	Initial	Steady		Initial	Steady	Initial	Steady	Initial	Steady	PID	H2S	CO				
1	BHA1	1.00	7.00	0.2	0.2	-	0	0	0.7	0.7	17.4	17.8		-	-	1.24	5.81		
2	BHA2	1.00	7.00	0.1	0.1	-	0	0	0.9	0.9	15.3	16.5		-	-	4.79	6.75		
3	BHA3	1.00	7.00	0.2	0.2	-	0	0	0.8	0.2	16.9	18.6		-	-	0.80	5.24		
4	BHA6	1.00	5.00																
5	BHA7	1.00	3.70																
6	BHA10	0.80	7.00																
7	BHA12	1.00	7.00																
8	BHA13	3.50	7.00																
9	BHA13	1.00	3.00																
10	BHA14	1.00	7.00																
11	BHA15	2.00	7.00																
12	BHA16	1.00	7.00																
13	BHA17	1.50	7.00																
14	BHA18	1.00	7.00																
15	BHA19	4.00	7.00																
16	BHA19	0.70	6.50																
COMMENTS & GROUND CONDITIONS:																			

Groundwater and Ground Gas Monitoring Form



VISIT 1

Site Name	Northstowe
Client	Gallagher Estates
Job No.	12170626/002
Date	01/02/06 - 03/02/06
Start Time	
End Time	

Operator	LF/CW
Pressure at Start mB	1028
Pressure at End mB	1028
Weather Conditions	Cloudy/Cold/Dry
Temperature oC	

Equipment	Serial No.	Calibrated
Gas Analyser	GA2000	Yes
Dipmeter	30m	N/A
Interface Probe		
PID		

	Borehole	Response Zone (m)		Gas Flow (l/hr)		Borehole Pressure (mB)	Methane (% v/v)		Carbon Dioxide (% v/v)		Oxygen (% v/v)		Other Gasses (ppmV)			Depth to Water (m)	Depth to Base (m)	Thickness of product (mm)	Sampled? (Y/N)
		Top	Bottom	Initial	Steady		Initial	Steady	Initial	Steady	Initial	Steady	PID	H2S	CO				
1	BHA33	0.70	6.70																
2	WSA4	1.00	4.00	0	0	-	0	0	1.4	1.4	18.7	18.9		-	-	1.30	-		
3	BH1	1.00	5.00																
4	BH9	1.00	5.00																
5																			
6																			
7																			
8																			
9																			
10																			
11																			
12																			
13																			
14																			
15																			
16																			
COMMENTS & GROUND CONDITIONS:																			

Groundwater and Ground Gas Monitoring Form



VISIT 2

Site Name	Northstowe
Client	Gallagher Estates
Job No.	12170626/002
Date	13./11/2006 - 20/11/2006
Start Time	
End Time	

Operator	RC/LF/CW
Pressure at Start mB	1007
Pressure at End mB	986
Weather Conditions	Overcast/Drizzle
Temperature oC	

Equipment	Serial No.	Calibrated
Gas Analyser	GA2000	Yes
Dipmeter	30m	N/A
Interface Probe		
PID		

	Borehole	Response Zone (m)		Gas Flow (l/hr)		Borehole Pressure (mB)	Methane (% v/v)		Carbon Dioxide (% v/v)		Oxygen (% v/v)		Other Gasses (ppmV)			Depth to Water (m)	Depth to Base (m)	Thickness of product (mm)	Sampled? (Y/N)
		Top	Bottom	Initial	Steady		Initial	Steady	Initial	Steady	Initial	Steady	PID	H2S	CO				
1	BHA33	0.70	6.70																
2	WSA4	1.00	4.00	-	-0.07	-	0	0	2.1	2	18.3	17.9		-	-	-	-		
3	BH1	1.00	5.00	0	0	-	0	0	3.9	4.1	15.4	16.5		-	-	2.03	2.67		
4	BH9	1.00	5.00																
5																			
6																			
7																			
8																			
9																			
10																			
11																			
12																			
13																			
14																			
15																			
16																			
COMMENTS & GROUND CONDITIONS:																			

Groundwater and Ground Gas Monitoring Form



VISIT 3

Site Name	Northstowe
Client	Gallagher Estates
Job No.	12170626/002
Date	29/01/2007 - 01/02/2007
Start Time	
End Time	

Operator	RC/LF/CW
Pressure at Start mB	1026
Pressure at End mB	1025
Weather Conditions	Sunny/Dry/Cool/Windy
Temperature oC	

Equipment	Serial No.	Calibrated
Gas Analyser	GA2000	Yes
Dipmeter	30m	N/A
Interface Probe		
PID		

	Borehole	Response Zone (m)		Gas Flow (l/hr)		Borehole Pressure (mB)	Methane (% v/v)		Carbon Dioxide (% v/v)		Oxygen (% v/v)		Other Gasses (ppmV)			Depth to Water (m)	Depth to Base (m)	Thickness of product (mm)	Sampled? (Y/N)
		Top	Bottom	Initial	Steady		Initial	Steady	Initial	Steady	Initial	Steady	PID	H2S	CO				
1	BHA33	0.70	6.70																
2	WSA4	1.00	4.00																
3	BH1	1.00	5.00	0	0	-	0	0	0.1	0.1	21.2	21.2	-	-	1.33	2.62			
4	BH9	1.00	5.00	-0.1	-0.1	-	0	0	0.4	0.4	21.1	21.4	-	-	0.76	4.95			
5																			
6																			
7																			
8																			
9																			
10																			
11																			
12																			
13																			
14																			
15																			
16																			
COMMENTS & GROUND CONDITIONS:																			

Groundwater and Ground Gas Monitoring Form



VISIT 4

Site Name	Northstowe
Client	Gallagher Estates
Job No.	12170626/002
Date	19/02/2007 - 21/02/2007
Start Time	
End Time	

Operator	RC/LF/CW
Pressure at Start mB	1009
Pressure at End mB	1000
Weather Conditions	Wet/Drizzle
Temperature oC	

Equipment	Serial No.	Calibrated
Gas Analyser	GA2000	Yes
Dipmeter	30m	N/A
Interface Probe		
PID		

	Borehole	Response Zone (m)		Gas Flow (l/hr)		Borehole Pressure (mB)	Methane (% v/v)		Carbon Dioxide (% v/v)		Oxygen (% v/v)		Other Gasses (ppmV)			Depth to Water (m)	Depth to Base (m)	Thickness of product (mm)	Sampled? (Y/N)
		Top	Bottom	Initial	Steady		Initial	Steady	Initial	Steady	Initial	Steady	PID	H2S	CO				
1	BHA33	0.70	6.70																
2	WSA4	1.00	4.00	0.1	0.1	-	0	0	1.4	1	18	20		-	-	1.11	2.13		
3	BH1	1.00	5.00	0.6	0.6	-	0	0	1.5	1.5	18.9	19.2		-	-	1.21	2.67		
4	BH9	1.00	5.00	-	-	-	-	-	-	-	-	-		-	-	0.52	4.97		
5																			
6																			
7																			
8																			
9																			
10																			
11																			
12																			
13																			
14																			
15																			
16																			
COMMENTS & GROUND CONDITIONS:																			

Groundwater and Ground Gas Monitoring Form



VISIT 5

Site Name	Northstowe
Client	Gallagher Estates
Job No.	12170626/002
Date	28/03/2007 - 29/03/2007
Start Time	
End Time	

Operator	RC & CW
Pressure at Start mB	1014
Pressure at End mB	1009
Weather Conditions	Wet/Foggy
Temperature oC	

Equipment	Serial No.	Calibrated
Gas Analyser	GA2000	Yes
Dipmeter	30m	N/A
Interface Probe		
PID		

	Borehole	Response Zone (m)		Gas Flow (l/hr)		Borehole Pressure (mB)	Methane (% v/v)		Carbon Dioxide (% v/v)		Oxygen (% v/v)		Other Gasses (ppmV)			Depth to Water (m)	Depth to Base (m)	Thickness of product (mm)	Sampled? (Y/N)
		Top	Bottom	Initial	Steady		Initial	Steady	Initial	Steady	Initial	Steady	PID	H2S	CO				
1	BHA33	0.70	6.70																
2	WSA4	1.00	4.00	-0.4	-0.4	-	0	0.1	1	0.2	20.5	21.2		-	-				
3	BH1	1.00	5.00	-0.1	-0.1	-	0	0	0.5	0.6	20.7	20.8		-	-	1.27	-		
4	BH9	1.00	5.00	-0.4	-0.4	-	0	0.1	0.5	0.4	20.6	20.9		-	-	0.90	-		
5																			
6																			
7																			
8																			
9																			
10																			
11																			
12																			
13																			
14																			
15																			
16																			
COMMENTS & GROUND CONDITIONS:																			

Groundwater and Ground Gas Monitoring Form



VISIT 6

Site Name	Northstowe
Client	Gallagher Estates
Job No.	12170626/002
Date	17/04/2007 - 19/04/2007
Start Time	
End Time	

Operator	RC & CW
Pressure at Start mB	1021
Pressure at End mB	1014
Weather Conditions	Dry/Sunny/Slight Wind
Temperature oC	

Equipment	Serial No.	Calibrated
Gas Analyser	GA2000	Yes
Dipmeter	30m	N/A
Interface Probe		
PID		

	Borehole	Response Zone (m)		Gas Flow (l/hr)		Borehole Pressure (mB)	Methane (% v/v)		Carbon Dioxide (% v/v)		Oxygen (% v/v)		Other Gasses (ppmV)			Depth to Water (m)	Depth to Base (m)	Thickness of product (mm)	Sampled? (Y/N)
		Top	Bottom	Initial	Steady		Initial	Steady	Initial	Steady	Initial	Steady	PID	H2S	CO				
1	BHA33	0.70	6.70																
2	WSA4	1.00	4.00	0.1	0.1	-	0	0	0	0	21	21		-	-	-	-		
3	BH1	1.00	5.00	-0.2	-0.2	-	0	0	2.1	2.1	18.6	18.8		-	-	1.43	-		
4	BH9	1.00	5.00	0	0	-	0	0	0.6	0.7	19.2	19.4		-	-	3.78	-		
5																			
6																			
7																			
8																			
9																			
10																			
11																			
12																			
13																			
14																			
15																			
16																			
COMMENTS & GROUND CONDITIONS:																			

Groundwater and Ground Gas Monitoring Form



VISIT 7

Site Name	Northstowe
Client	Gallagher Estates
Job No.	12170626/002
Date	22/05/2007 - 29/05/2007
Start Time	
End Time	

Operator	RC/CW
Pressure at Start mB	1020
Pressure at End mB	1000
Weather Conditions	Sunny/Dry/Windy to Heavy Rainfall
Temperature oC	

Equipment	Serial No.	Calibrated
Gas Analyser	GA2000	Yes
Dipmeter	30m	N/A
Interface Probe		
PID		

	Borehole	Response Zone (m)		Gas Flow (l/hr)		Borehole Pressure (mB)	Methane (% v/v)		Carbon Dioxide (% v/v)		Oxygen (% v/v)		Other Gasses (ppmV)			Depth to Water (m)	Depth to Base (m)	Thickness of product (mm)	Sampled? (Y/N)
		Top	Bottom	Initial	Steady		Initial	Steady	Initial	Steady	Initial	Steady	PID	H2S	CO				
1	BHA33	0.70	6.70																
2	WSA4	1.00	4.00	0.0	0.0	-	0	0	0	0	20.0	20.3		-	-	-			
3	BH1	1.00	5.00	0	0	-	0	0	1.8	2	16.6	16.9		-	-	1.60			
4	BH9	1.00	5.00	0	0	-	0	0	0.7	1	17.2	18.1		-	-	3.64			
5																			
6																			
7																			
8																			
9																			
10																			
11																			
12																			
13																			
14																			
15																			
16																			
COMMENTS & GROUND CONDITIONS:																			

Groundwater and Ground Gas Monitoring Form



VISIT 8

Site Name	Northstowe
Client	Gallagher Estates
Job No.	12170626/002
Date	18/06/2007 - 22/06/2007
Start Time	
End Time	

Operator	RC/AM/CW
Pressure at Start mB	1005
Pressure at End mB	1004
Weather Conditions	Dry/Sunny/Windy
Temperature oC	

Equipment	Serial No.	Calibrated
Gas Analyser	GA2000	Yes
Dipmeter	30m	N/A
Interface Probe		
PID		

	Borehole	Response Zone (m)		Gas Flow (l/hr)		Borehole Pressure (mB)	Methane (% v/v)		Carbon Dioxide (% v/v)		Oxygen (% v/v)		Other Gasses (ppmV)			Depth to Water (m)	Depth to Base (m)	Thickness of product (mm)	Sampled? (Y/N)
		Top	Bottom	Initial	Steady		Initial	Steady	Initial	Steady	Initial	Steady	PID	H2S	CO				
1	BHA33	0.70	6.70																
2	WSA4	1.00	4.00																
3	BH1	1.00	5.00	0.0	0.0	-	0	0	3.7	3.8	16.2	16.0	-	-	1.5	2.63			
4	BH9	1.00	5.00	0.0	0.0	-	0	0	1.9	1.9	15	15.8	-	-	1.93	5.0			
5																			
6																			
7																			
8																			
9																			
10																			
11																			
12																			
13																			
14																			
15																			
16																			
COMMENTS & GROUND CONDITIONS:																			

Groundwater and Ground Gas Monitoring Form



VISIT 9

Site Name	Northstowe
Client	Gallagher Estates
Job No.	12170626/002
Date	23/07/2007 - 26/07/2007
Start Time	
End Time	

Operator	AM/SS/CW
Pressure at Start mB	1010
Pressure at End mB	1006
Weather Conditions	dry,overcast,lightbreeze
Temperature oC	

Equipment	Serial No.	Calibrated
Gas Analyser	GA2000	Yes
Dipmeter	30m	N/A
Interface Probe		
PID		

	Borehole	Response Zone (m)		Gas Flow (l/hr)		Borehole Pressure (mB)	Methane (% v/v)		Carbon Dioxide (% v/v)		Oxygen (% v/v)		Other Gasses (ppmV)			Depth to Water (m)	Depth to Base (m)	Thickness of product (mm)	Sampled? (Y/N)
		Top	Bottom	Initial	Steady		Initial	Steady	Initial	Steady	Initial	Steady	PID	H2S	CO				
1	BHA32	0.70	6.70	0.2	0.0	-59	0	0	5.6	5.9	14.0	13.3		0	3	1.45	6.80		
2	WSA4	1.00	4.00	0.0	0.1	-12	0	0	0.1	0.0	19.5	20.5		0	4	-	-		
3	BH1	1.00	5.00	0.1	0.1	-9	0	0	0.3	5.5	19.0	15.8		0	0	1.61	2.62		
4	BH9	1.00	5.00	0.0	0.0	4	0.1	0.1	2.8	3.6	16.2	14.1		0	0	1.95	5.01		
5																			
6																			
7																			
8																			
9																			
10																			
11																			
12																			
13																			
14																			
15																			
16																			
COMMENTS & GROUND CONDITIONS:																			

Groundwater and Ground Gas Monitoring Form



VISIT 10

Site Name	Northstowe
Client	Gallagher Estates
Job No.	12170626/002
Date	13/08/2007 - 15/08/2007
Start Time	
End Time	

Operator	AM/SS/RC/CW
Pressure at Start mB	1006
Pressure at End mB	981
Weather Conditions	Dry/Overcast/Windy
Temperature oC	

Equipment	Serial No.	Calibrated
Gas Analyser	GA2000	Yes
Dipmeter	30m	N/A
Interface Probe		
PID		

	Borehole	Response Zone (m)		Gas Flow (l/hr)		Borehole Pressure (mB)	Methane (% v/v)		Carbon Dioxide (% v/v)		Oxygen (% v/v)		Other Gasses (ppmV)			Depth to Water (m)	Depth to Base (m)	Thickness of product (mm)	Sampled? (Y/N)
		Top	Bottom	Initial	Steady		Initial	Steady	Initial	Steady	Initial	Steady	PID	H2S	CO				
1	BHA33	0.70	6.70	-0.1	-0.1	4	0	0	0.4	0.3	20.1	20.3		0	1	1.56	6.71		
2	WSA4	1.00	4.00	0.0	0.0	4	0	-	0	-	20.0	-		0	0	-	-		
3	BH1	1.00	5.00	-0.1	0.0	0	0	0	3.9	4.4	18.9	17.9		0	0	1.70	2.57		
4	BH9	1.00	5.00	0.0	0.0	4	0	0	1.5	2	19.3	19.1		0	3	2.01	4.92		
5																			
6																			
7																			
8																			
9																			
10																			
11																			
12																			
13																			
14																			
15																			
16																			
COMMENTS & GROUND CONDITIONS:																			

Groundwater and Ground Gas Monitoring Form



VISIT 11

Site Name	Northstowe
Client	Gallagher Estates
Job No.	12170626/002
Date	03/09/2007 - 05/09/2007
Start Time	
End Time	

Operator	AM/SS
Pressure at Start mB	1026
Pressure at End mB	1014
Weather Conditions	Warm, dry, overcast
Temperature oC	16.5

Equipment	Serial No.	Calibrated
Gas Analyser	GA2000	Yes
Dipmeter	30m	N/A
Interface Probe		
PID		

	Borehole	Response Zone (m)		Gas Flow (l/hr)		Borehole Pressure (mB)	Methane (% v/v)		Carbon Dioxide (% v/v)		Oxygen (% v/v)		Other Gasses (ppmV)			Depth to Water (m)	Depth to Base (m)	Thickness of product (mm)	Sampled? (Y/N)
		Top	Bottom	Initial	Steady		Initial	Steady	Initial	Steady	Initial	Steady	PID	H2S	CO				
1	BHA33	0.70	6.70	0.1	0.1	5	0	0	0.9	0.6	19.8	20.1		0	0	0.99	6.74		
2	WSA4	1.00	4.00																
3	BH1	1.00	5.00	0.0	0.0	9	0	0	3.7	3.9	16.2	16.0		0	3	1.76	2.62	1	
4	BH9	1.00	5.00	0.1	0.0	5	0	0	1.9	2.1	19.0	18.4		0	0	2.09	5.02	-	
5																			
6																			
7																			
8																			
9																			
10																			
11																			
12																			
13																			
14																			
15																			
16																			
COMMENTS & GROUND CONDITIONS:																			

Groundwater and Ground Gas Monitoring Form

VISIT 12



Site Name	Northstowe
Client	Gallagher Estates
Job No.	12170626/002
Date	23/10/2007 - 25/10/2007
Start Time	
End Time	

Operator	RLC/CP/AS
Pressure at Start mB	1030
Pressure at End mB	1020
Weather Conditions	Foggy start to Dry/Cool/Light Breeze
Temperature oC	

Equipment	Serial No.	Calibrated
Gas Analyser	GA2000	Yes
Dipmeter	30m	N/A
Interface Probe		
PID		

	Borehole	Response Zone (m)		Gas Flow (l/hr)		Borehole Pressure (mB)	Methane (% v/v)		Carbon Dioxide (% v/v)		Oxygen (% v/v)		Other Gasses (ppmV)			Depth to Water (m)	Depth to Base (m)	Thickness of product (mm)	Sampled? (Y/N)
		Top	Bottom	Initial	Steady		Initial	Steady	Initial	Steady	Initial	Steady	PID	H2S	CO				
1	BHA33	3.50	7.00	0.1	0.1	0	0	0	0.5	0.2	20.5	20.6		0	1	1.46	-		
2	WSA4	1.00	3.00																
3	BH1	1.00	5.00														-		
4	BH9	1.00	5.00	0.5	0.4	1	0	0	0.5	0.3	20.4	20.3		0	0	0.46			
5																			
6																			
7																			
8																			
9																			
10																			
11																			
12																			
13																			
14																			
15																			
16																			
COMMENTS & GROUND CONDITIONS:																			

Groundwater and Ground Gas Monitoring Form

VISIT 13



Site Name	Northstowe
Client	Gallagher Estates
Job No.	12170626/002
Date	20-21.11.07
Start Time	10.00 am
End Time	

Operator	Phil Webb
Pressure at Start mB	1006
Pressure at End mB	1007
Weather Conditions	Rained night before, damp
Temperature oC	

Equipment	Serial No.	Calibrated
Gas Analyser	GA2000	Yes
Dipmeter		
Interface Probe		
PID		

	Borehole	Response Zone (m)		Gas Flow (l/hr)		Borehole Pressure (mB)	Methane (% v/v)		Carbon Dioxide (% v/v)		Oxygen (% v/v)		Other Gasses (ppmV)			Depth to Water (m)	Depth to Base (m)	Thickness of product (mm)	Sampled? (Y/N)
		Top	Bottom	Initial	Steady		Initial	Steady	Initial	Steady	Initial	Steady	PID	H2S	CO				
1	BHA33			+0.2	0.0	4	0	0	2.7	2.7	19.2	19.3		0	4	1.72	2.66		
2	WSA4																		
3	BH1			+0.2	0	+3.54	0	0	2.7	2.7	19.2	19.3		0	4	1.721	2.66		
4	BH9																		
5	BHA33			+0.2	-0.4	+0.04	0	0	0	0.1	20.4	20.0		0	3	1.575	6.66		
6	DH24			+0.1	0.0	=0.01	0	0	0.1	1.5	20.3	19.4		0	0	0.318	6.45		
7																			
8																			
9																			
10																			
11																			
12																			
13																			
14																			
15																			
16																			
COMMENTS & GROUND CONDITIONS:																			

Groundwater and Ground Gas Monitoring Form



VISIT 2

Site Name	Northstowe
Client	Gallagher Estates
Job No.	12170626/002
Date	13/11/2006 - 20/11/2006
Start Time	
End Time	

Operator	RC/LF/CW
Pressure at Start mB	1007
Pressure at End mB	986
Weather Conditions	Overcast/Drizzle
Temperature oC	

Equipment	Serial No.	Calibrated
Gas Analyser	GA2000	Yes
Dipmeter	30m	N/A
Interface Probe		
PID		

	Borehole	Response Zone (m)		Gas Flow (l/hr)		Borehole Pressure (mB)	Methane (% v/v)		Carbon Dioxide (% v/v)		Oxygen (% v/v)		Other Gasses (ppmV)			Depth to Water (m)	Depth to Base (m)	Thickness of product (mm)	Sampled? (Y/N)
		Top	Bottom	Initial	Steady		Initial	Steady	Initial	Steady	Initial	Steady	PID	H2S	CO				
1	BHA1	1.00	7.00	0	0	-	0	0	1.6	1.6	18.2	18.3		-	-	1.54	4.18		
2	BHA2	1.00	7.00	0	0	-	0	0	2.1	2.1	18	18.2		-	-	1.75	6.70		
3	BHA3	1.00	7.00	0	0	-	0	0	2.5	2.4	14.7	16.7		-	-	1.14	4.93		
4	BHA6	1.00	5.00	0	0	-	0	0	2.6	2	15.9	16.7		-	-	0.65	4.56		
5	BHA7	1.00	3.70	0	0	-	0	0	2.7	0.3	17.8	19.5		-	-	1.15	3.78		
6	BHA10	0.80	7.00																
7	BHA12	1.00	7.00	0	0	-	0	0	1.5	1.5	12	10.5		-	-	1.93	7.12		
8	BHA13	3.50	7.00																
9	BHA13	1.00	3.00																
10	BHA14	1.00	7.00																
11	BHA15	2.00	7.00																
12	BHA16	1.00	7.00																
13	BHA17	1.50	7.00																
14	BHA18	1.00	7.00																
15	BHA19	4.00	7.00																
16	BHA19	0.70	6.50																
COMMENTS & GROUND CONDITIONS:																			

Groundwater and Ground Gas Monitoring Form



VISIT 3

Site Name	Northstowe
Client	Gallagher Estates
Job No.	12170626/002
Date	29/01/2007 - 01/02/2007
Start Time	
End Time	

Operator	RC/LF/CW
Pressure at Start mB	1026
Pressure at End mB	1025
Weather Conditions	Sunny/Dry/Cool/Windy
Temperature oC	

Equipment	Serial No.	Calibrated
Gas Analyser	GA2000	Yes
Dipmeter	30m	N/A
Interface Probe		
PID		

	Borehole	Response Zone (m)		Gas Flow (l/hr)		Borehole Pressure (mB)	Methane (% v/v)		Carbon Dioxide (% v/v)		Oxygen (% v/v)		Other Gasses (ppmV)			Depth to Water (m)	Depth to Base (m)	Thickness of product (mm)	Sampled? (Y/N)
		Top	Bottom	Initial	Steady		Initial	Steady	Initial	Steady	Initial	Steady	PID	H2S	CO				
1	BHA1	1.00	7.00	-0.1	-0.1	-	0	0	0.1	0.1	21.4	21.5		-	-	0.69	4.22		
2	BHA2	1.00	7.00	0.3	0.3	-	0	0	0.8	0.8	19.8	19.8		-	-	0.40	6.73		
3	BHA3	1.00	7.00	0.04	0.04	-	0	0	0.1	0.1	21.1	21.2		-	-	3.41	4.94		
4	BHA6	1.00	5.00	-0.1	-0.1	-	0	0	0.2	0.1	21.1	21.4		-	-	0.62	3.23		
5	BHA7	1.00	3.70	6.6	6.6	-	0	0	5	5.3	14.9	16.2		-	-	0.98	3.76		
6	BHA10	0.80	7.00																
7	BHA12	1.00	7.00	0	0	-	0	0	0.3	0.1	21.1	21.3		-	-	0.76	7.05		
8	BHA13	3.50	7.00																
9	BHA13	1.00	3.00																
10	BHA14	1.00	7.00																
11	BHA15	2.00	7.00																
12	BHA16	1.00	7.00																
13	BHA17	1.50	7.00																
14	BHA18	1.00	7.00																
15	BHA19	4.00	7.00																
16	BHA19	0.70	6.50																
COMMENTS & GROUND CONDITIONS:																			

Groundwater and Ground Gas Monitoring Form



VISIT 4

Site Name	Northstowe
Client	Gallagher Estates
Job No.	12170626/002
Date	19/02/2007 - 21/02/2007
Start Time	
End Time	

Operator	RC/LF/CW
Pressure at Start mB	1009
Pressure at End mB	1000
Weather Conditions	Wet/Drizzle
Temperature oC	

Equipment	Serial No.	Calibrated
Gas Analyser	GA2000	Yes
Dipmeter	30m	N/A
Interface Probe		
PID		

	Borehole	Response Zone (m)		Gas Flow (l/hr)		Borehole Pressure (mB)	Methane (% v/v)		Carbon Dioxide (% v/v)		Oxygen (% v/v)		Other Gasses (ppmV)			Depth to Water (m)	Depth to Base (m)	Thickness of product (mm)	Sampled? (Y/N)
		Top	Bottom	Initial	Steady		Initial	Steady	Initial	Steady	Initial	Steady	PID	H2S	CO				
1	BHA1	1.00	7.00	0.1	0.1	-	0	0	0.4	0.1	20.6	21.2		-	-	0.63	4.06		
2	BHA2	1.00	7.00																
3	BHA3	1.00	7.00	3.6	3.6	-	0		1.9		15.1	-		-	-	0.33	4.98		
4	BHA6	1.00	5.00	1.1	1.1	-	0	0	0.1	0.1	20.8	20.7		-	-	0.62	3.23		
5	BHA7	1.00	3.70	10.6	10.6	-	0	0	0.8	0.2	20	20.9		-	-	0.96	3.78		
6	BHA10	0.80	7.00	0.3	0.3	-	0	0	1	0.7	15.3	16.9		-	-	1.17	7.05		
7	BHA12	1.00	7.00	7.1	7.1	-	0	0	0.4	0.1	20.6	20.8		-	-	0.78	7.07		
8	BHA13	3.50	7.00																
9	BHA13	1.00	3.00																
10	BHA14	1.00	7.00																
11	BHA15	2.00	7.00																
12	BHA16	1.00	7.00																
13	BHA17	1.50	7.00																
14	BHA18	1.00	7.00																
15	BHA19	4.00	7.00																
16	BHA19	0.70	6.50																

COMMENTS & GROUND CONDITIONS:

Groundwater and Ground Gas Monitoring Form



VISIT 5

Site Name	Northstowe
Client	Gallagher Estates
Job No.	12170626/002
Date	28/03/2007 - 29/03/2007
Start Time	
End Time	

Operator	RC & CW
Pressure at Start mB	1014
Pressure at End mB	1009
Weather Conditions	Wet/Foggy
Temperature oC	

Equipment	Serial No.	Calibrated
Gas Analyser	GA2000	Yes
Dipmeter	30m	N/A
Interface Probe		
PID		

	Borehole	Response Zone (m)		Gas Flow (l/hr)		Borehole Pressure (mB)	Methane (% v/v)		Carbon Dioxide (% v/v)		Oxygen (% v/v)		Other Gasses (ppmV)			Depth to Water (m)	Depth to Base (m)	Thickness of product (mm)	Sampled? (Y/N)
		Top	Bottom	Initial	Steady		Initial	Steady	Initial	Steady	Initial	Steady	PID	H2S	CO				
1	BHA1	1.00	7.00	0.2	0.2	-	0.1	0.1	0.2	0.1	21.3	21.3		-	-	0.31	-		
2	BHA2	1.00	7.00	-0.4	-0.4	-	0	0	0.8	0.3	20.4	20.4		-	-	0.55	-		
3	BHA3	1.00	7.00	-5.2	-5.2	-	0	0	0.1	0.1	20.7	21		-	-	-	-		
4	BHA6	1.00	5.00																
5	BHA7	1.00	3.70																
6	BHA10	0.80	7.00	0.5	-0.1	-	0.1	0.1	0.1	0.1	21.2	21.3		-	-	0.96	7.11		
7	BHA12	1.00	7.00	-0.2	-0.2	-	0.1	0.1	0.2	0.2	21.3	21.3		-	-	0.92	-		
8	BHA13	3.50	7.00																
9	BHA13	1.00	3.00																
10	BHA14	1.00	7.00																
11	BHA15	2.00	7.00																
12	BHA16	1.00	7.00																
13	BHA17	1.50	7.00																
14	BHA18	1.00	7.00																
15	BHA19	4.00	7.00																
16	BHA19	0.70	6.50																
COMMENTS & GROUND CONDITIONS:																			

Groundwater and Ground Gas Monitoring Form



VISIT 6

Site Name	Northstowe
Client	Gallagher Estates
Job No.	12170626/002
Date	17/04/2007 - 19/04/2007
Start Time	
End Time	

Operator	RC & CW
Pressure at Start mB	1021
Pressure at End mB	1014
Weather Conditions	Dry/Sunny/Slight Wind
Temperature oC	

Equipment	Serial No.	Calibrated
Gas Analyser	GA2000	Yes
Dipmeter	30m	N/A
Interface Probe		
PID		

	Borehole	Response Zone (m)		Gas Flow (l/hr)		Borehole Pressure (mB)	Methane (% v/v)		Carbon Dioxide (% v/v)		Oxygen (% v/v)		Other Gasses (ppmV)			Depth to Water (m)	Depth to Base (m)	Thickness of product (mm)	Sampled? (Y/N)
		Top	Bottom	Initial	Steady		Initial	Steady	Initial	Steady	Initial	Steady	PID	H2S	CO				
1	BHA1	1.00	7.00	0	0	-	0	0	0	0	20.9	21		-	-	0.99	-		
2	BHA2	1.00	7.00	0.1	0.1	-	0	0	1.8	1.8	18.4	18.5		-	-	1.68	-		
3	BHA3	1.00	7.00	-2	-2	-	0	0	0.6	0.6	20.5	20.6		-	-	0.62	-		
4	BHA6	1.00	5.00																
5	BHA7	1.00	3.70	>>>	>>>	-	0	0	2.9	3	18.4	18.5		-	-	2.03	-		
6	BHA10	0.80	7.00																
7	BHA12	1.00	7.00	0.2	0.2	-	0	0	0.8	0.2	18.9	20.4		-	-	1.04	-		
8	BHA13	3.50	7.00																
9	BHA13	1.00	3.00																
10	BHA14	1.00	7.00																
11	BHA15	2.00	7.00																
12	BHA16	1.00	7.00																
13	BHA17	1.50	7.00																
14	BHA18	1.00	7.00																
15	BHA19	4.00	7.00																
16	BHA19	0.70	6.50																
COMMENTS & GROUND CONDITIONS:																			

Groundwater and Ground Gas Monitoring Form



VISIT 7

Site Name	Northstowe
Client	Gallagher Estates
Job No.	12170626/002
Date	22/05/2007 - 29/05/2007
Start Time	
End Time	

Operator	RC/CW
Pressure at Start mB	1020
Pressure at End mB	1000
Weather Conditions	Sunny/Dry/Windy to Heavy Rainfall
Temperature oC	

Equipment	Serial No.	Calibrated
Gas Analyser	GA2000	Yes
Dipmeter	30m	N/A
Interface Probe		
PID		

	Borehole	Response Zone (m)		Gas Flow (l/hr)		Borehole Pressure (mB)	Methane (% v/v)		Carbon Dioxide (% v/v)		Oxygen (% v/v)		Other Gasses (ppmV)			Depth to Water (m)	Depth to Base (m)	Thickness of product (mm)	Sampled? (Y/N)
		Top	Bottom	Initial	Steady		Initial	Steady	Initial	Steady	Initial	Steady	PID	H2S	CO				
1	BHA1	1.00	7.00	0	0	-	0	0	1.6	1.6	16.9	17		-	-	1.24			
2	BHA2	1.00	7.00	0	0	-	0	0	1.2	1.4	17.8	18		-	-	1.71			
3	BHA3	1.00	7.00	0	0	-	0	0	0.9	0.7	20	20.3		-	-	1.64			
4	BHA6	1.00	5.00																
5	BHA7	1.00	3.70																
6	BHA10	0.80	7.00	-0.8	-0.8	-	0	0	0.4	0.2	16.6	16.9		-	-	3.61			
7	BHA12	1.00	7.00	-0.6	-0.6	-	0	0	0	0	20.2	20.2		-	-	1.15			
8	BHA13	3.50	7.00																
9	BHA13	1.00	3.00																
10	BHA14	1.00	7.00																
11	BHA15	2.00	7.00																
12	BHA16	1.00	7.00																
13	BHA17	1.50	7.00																
14	BHA18	1.00	7.00																
15	BHA19	4.00	7.00																
16	BHA19	0.70	6.50																
COMMENTS & GROUND CONDITIONS:																			

Groundwater and Ground Gas Monitoring Form



VISIT 8

Site Name	Northstowe
Client	Gallagher Estates
Job No.	12170626/002
Date	18/06/2007 - 22/06/2007
Start Time	
End Time	

Operator	RC/AM/CW
Pressure at Start mB	1005
Pressure at End mB	1004
Weather Conditions	Dry/Sunny/Windy
Temperature oC	

Equipment	Serial No.	Calibrated
Gas Analyser	GA2000	Yes
Dipmeter	30m	N/A
Interface Probe		
PID		

	Borehole	Response Zone (m)		Gas Flow (l/hr)		Borehole Pressure (mB)	Methane (% v/v)		Carbon Dioxide (% v/v)		Oxygen (% v/v)		Other Gasses (ppmV)			Depth to Water (m)	Depth to Base (m)	Thickness of product (mm)	Sampled? (Y/N)
		Top	Bottom	Initial	Steady		Initial	Steady	Initial	Steady	Initial	Steady	PID	H2S	CO				
1	BHA1	1.00	7.00	0.0	0.0	-	0	0	3.4	3.5	16.3	16.2		-	-	1.12	4.09		
2	BHA2	1.00	7.00	-1.8	-2.1	-	0	0	1.2	0.8	18.9	19.5		-	-	0.75	6.75		
3	BHA3	1.00	7.00	-7.1	-3.8	-	0	0	1.6	0.6	18.5	19.5		-	-	0.71	4.90		
4	BHA6	1.00	5.00	0.0	0.0	0	0	0	6	3.4	14.1	14.4		0	0	0.79	1.65		
5	BHA7	1.00	3.70	6.5	1.2	1	0	0	6.4	6.5	14.4	13.7		0	0	0.86	3.77		
6	BHA10	0.80	7.00																
7	BHA12	1.00	7.00	0.0	0.0	0	0	0	0.1	0.1	20.4	20.4		0	3	1.02	7.16		
8	BHA13	3.50	7.00																
9	BHA13	1.00	3.00																
10	BHA14	1.00	7.00																
11	BHA15	2.00	7.00																
12	BHA16	1.00	7.00																
13	BHA17	1.50	7.00																
14	BHA18	1.00	7.00																
15	BHA19	4.00	7.00																
16	BHA19	0.70	6.50																

COMMENTS & GROUND CONDITIONS:

Groundwater and Ground Gas Monitoring Form



VISIT 9

Site Name	Northstowe
Client	Gallagher Estates
Job No.	12170626/002
Date	23/07/07-26/07/07
Start Time	
End Time	

Operator	AM/SS/CW
Pressure at Start mB	1010
Pressure at End mB	1006
Weather Conditions	dry,overcast,lightbreeze
Temperature oC	

Equipment	Serial No.	Calibrated
Gas Analyser	GA2000	Yes
Dipmeter	30m	N/A
Interface Probe		
PID		

	Borehole	Response Zone (m)		Gas Flow (l/hr)		Borehole Pressure (mB)	Methane (% v/v)		Carbon Dioxide (% v/v)		Oxygen (% v/v)		Other Gasses (ppmV)			Depth to Water (m)	Depth to Base (m)	Thickness of product (mm)	Sampled? (Y/N)
		Top	Bottom	Initial	Steady		Initial	Steady	Initial	Steady	Initial	Steady	PID	H2S	CO				
1	BHA1	1.00	7.00	-0.1	0.0	3	0	0	4.8	5.1	14.6	14.4		0	1	1.08	4.13	1	
2	BHA2	1.00	7.00	-0.1	0.0	-73	0	0	2.4	1.1	17.5	19.3		0	0	1.09	7.77		
3	BHA3	1.00	7.00	0.0	0.0	-105	0	0	2.3	2.2	13.6	16.5		0	1	0.78	5.04		
4	BHA6	1.00	5.00	0.0	0.0	-69	0.1	0	6.0	5.8	11.7	11.0		0	3	0.79	3.26		
5	BHA7	1.00	3.70	0.1	0.0	-246	0.1	0	7.5	7.8	13.2	12.0		0	1	1.04	2.60		
6	BHA10	0.80	7.00																
7	BHA12	1.00	7.00	0.0	0.0	-37	0.1	0	0.3	0.1	19.9	20.4		0	0	0.98	6.23		
8	BHA13	3.50	7.00	0.0	0.0	-42	0	0.1	0.7	0.4	19.8	20.1		0	5	1.09	7.09		
9	BHA13	1.00	3.00	0.1	0.0	-50	0.1	0	1.3	0.6	18.9	19.7		0	18	1.07	3.06		
10	BHA14	1.00	7.00	0.0	0.0	-47	0	0	0.7	0.5	18.4	19.0		7	-	0.72	6.74		
11	BHA15	2.00	7.00	0.0	0.0	3	0	0	0.1	0.0	20.0	20.3		0	23	6.77	6.89		
12	BHA16	1.00	7.00	0.0	0.0	3	0	0	0.3	0.3	19.6	19.7		0	3	5.95	6.91		
13	BHA17	1.50	7.00	0.0	0.0	5	0	0	0.3	0.3	19.3	19.2		0	4	Dry	7.07		
14	BHA18	1.00	7.00	0	0	-56.1	0.1	0	0.3	0.7	19.5	17.3		0	1	4.89	7.06		
15	BHA19	4.00	7.00	0	0	-43.4	0	0	1.9	1	18	18.4		0	1	1.14	2.85		
16	BHA19	0.70	6.50	0	0	-44.3	0	0	0.8	0.4	18.7	19.2		0	2	1.12	6.79		

COMMENTS & GROUND CONDITIONS:

Groundwater and Ground Gas Monitoring Form



VISIT 9

Site Name	Northstowe
Client	Gallagher Estates
Job No.	12170626/002
Date	23/07/07-26/07/07
Start Time	
End Time	

Operator	AM/SS/CW
Pressure at Start mB	1010
Pressure at End mB	1006
Weather Conditions	dry,overcast,lightbreeze
Temperature oC	

Equipment	Serial No.	Calibrated
Gas Analyser	GA2000	Yes
Dipmeter	30m	N/A
Interface Probe		
PID		

	Borehole	Response Zone (m)		Gas Flow (l/hr)		Borehole Pressure (mB)	Methane (% v/v)		Carbon Dioxide (% v/v)		Oxygen (% v/v)		Other Gasses (ppmV)			Depth to Water (m)	Depth to Base (m)	Thickness of product (mm)	Sampled? (Y/N)
		Top	Bottom	Initial	Steady		Initial	Steady	Initial	Steady	Initial	Steady	PID	H2S	CO				
17	BHA20	0.90	3.00																
18	BHA20	4.00	7.00																
19	BHA21	0.70	6.50	0	0	-44.2	0	0	1	1	16.3	16.1	0	4	1.18	6.47			
20	BHA22	1.20	8.00	0	0	-43.6	0	0	6.5	6.6	12.6	12.5	0	1	1.53	7.51			
21	BHA23	1.00	3.00	0	0	-40.3	0	0	0.7	0.7	17.6	16.3	0	2	1.25	3.03	1		
22	BHA23	4.00	7.00	0	0	-41	0	0	0	0	17.4	19.4	0	6	1.14	7.07	1		
23	BHA24	2.00	7.00	0	0	-44	0	0	0.7	0.2	19.8	19.4	0	3	Dry	6.98			
24	BHA25	2.00	7.00	0	0	-63.5	0.1	0	1.2	0.4	16.4	19.1	0	0	1.58	6.98			
25	BHA26	1.00	7.00	0.1	0	-39.9	0.1	0	0.6	0.6	17.5	17.6	0	0	6.73	7.16			
26	BHA27	1.00	7.00	0	0	-38.8	0	0	0.1	0.2	20.1	18.2	0	0	6.72	6.98			
27	BHA28	2.20	5.70	0	0	-27.7	0	0	1.7	0.5	5.5	15.8	0	2	0.85	6.77			
28	BHA29																		
29	BHA30	5.00	6.00	0	0	-0.8	0	0	0.5	0.4	4.5	6.9	0	0	0.89	5.78			
30	BHA30	1.00	4.00	-0.1	0	-2.4	0	0	0	0	12.1	16.8	0	29	0.90	3.76	1		
31	BHA31	1.10	6.10	0	0	-44.7	0	0	0.1	0	17.1	18.8	0	4	0.88	5.93			
32	BHA32	1.20	6.70	0	0	-38.3	0	0	1.6	1.6	13.2	13.1	0	0	1.71	6.32	1		

COMMENTS & GROUND CONDITIONS:

Groundwater and Ground Gas Monitoring Form



VISIT 10

Site Name	Northstowe
Client	Gallagher Estates
Job No.	12170626/002
Date	13/08/07-15/08/07
Start Time	
End Time	

Operator	AM/SS/RC/CW
Pressure at Start mB	1006
Pressure at End mB	981
Weather Conditions	Dry/Overcast/Windy
Temperature oC	

Equipment	Serial No.	Calibrated
Gas Analyser	GA2000	Yes
Dipmeter	30m	N/A
Interface Probe		
PID		

	Borehole	Response Zone (m)		Gas Flow (l/hr)		Borehole Pressure (mB)	Methane (% v/v)		Carbon Dioxide (% v/v)		Oxygen (% v/v)		Other Gasses (ppmV)			Depth to Water (m)	Depth to Base (m)	Thickness of product (mm)	Sampled? (Y/N)
		Top	Bottom	Initial	Steady		Initial	Steady	Initial	Steady	Initial	Steady	PID	H2S	CO				
1	BHA1	1.00	7.00	0.0	0.0	4	0.1	0.1	1.9	2.3	19.5	19.1		1	2	1.26	4.03		
2	BHA2	1.00	7.00	0.0	0.0	4	0	0	1.7	1.6	18.7	19.0		0	3	1.34	6.66		
3	BHA3	1.00	7.00	-2.4	-0.2	0	0	0	2.7	3	16.4	15.6		0	0	0.90	4.99	1	
4	BHA6	1.00	5.00	0.0	0.0	-12	0	0	0.2	0	17.4	20.3		0	3	1.04	3.17		
5	BHA7	1.00	3.70	-9.8	0.0	-12	0	0	6.6	7	14.2	13.5		0	3	1.00	3.74		
6	BHA10	0.80	7.00																
7	BHA12	1.00	7.00	-6.9	0.0	4	0	0	0.4	0.1	20.3	20.4		0	1	1.21	7.01		
8	BHA13	2.00	7.00	0.0	0.0	3	0	0	0.7	0.4	19.1	19.6		1	4	1.26	3.01		
9	BHA13	1.00	7.00	-9.5	0.0	3	0	0	0.7	0.5	19.4	19.3		0	3	1.10	7.03		
10	BHA14	1.50	7.00	0.1	0.0	3	0	0	0.6	0.3	19.2	19.4		1	5	0.84	6.69		
11	BHA15	1.00	7.00	0.0	0.0	3	0	0	0.2	0	19.4	19.8		1	4	3.45	6.84		
12	BHA16	4.00	7.00	0.0	0.0	3	0	0	0.5	0.5	20.1	20.1		1	1	5.67	6.88		
13	BHA17	0.70	6.50	-0.1	0.0	3	0	0	0.2	0	18.8	19.8		0	3	DRY	7.13		
14	BHA18	0.90	3.00	-0.2	0.0	3	0	0	0.3	0.3	12.0	11.5		0	3	1.49	6.98		
15	BHA19	4.00	7.00	0.0	0.0	3	0	0	1.9	1.4	18.2	19.4		0	6	1.26	2.74		
16	BHA19	0.70	6.50	0.1	0.0	3	0.1	0	0.2	0.1	19.8	20.3		0	7	1.15	6.69		

COMMENTS & GROUND CONDITIONS:

Groundwater and Ground Gas Monitoring Form



VISIT 10

Site Name	Northstowe
Client	Gallagher Estates
Job No.	12170626/002
Date	13/08/07-15/08/07
Start Time	
End Time	

Operator	AM/SS/RC/CW
Pressure at Start mB	1006
Pressure at End mB	981
Weather Conditions	Dry/Overcast/Windy
Temperature oC	

Equipment	Serial No.	Calibrated
Gas Analyser	GA2000	Yes
Dipmeter	30m	N/A
Interface Probe		
PID		

	Borehole	Response Zone (m)		Gas Flow (l/hr)		Borehole Pressure (mB)	Methane (% v/v)		Carbon Dioxide (% v/v)		Oxygen (% v/v)		Other Gasses (ppmV)			Depth to Water (m)	Depth to Base (m)	Thickness of product (mm)	Sampled? (Y/N)
		Top	Bottom	Initial	Steady		Initial	Steady	Initial	Steady	Initial	Steady	PID	H2S	CO				
17	BHA20	0.90	3.00																
18	BHA20	4.00	7.00																
19	BHA21	0.70	6.50	-0.1	-0.1	4	0	0	0	0	19.5	20.4		0	3	-	-		
20	BHA22	1.20	8.00	0.2	0.3	4	0	0	2.6	3.3	19.4	18.5		0	3	1.64	7.42		
21	BHA23	1.00	3.00	0.0	0.0	3	0	0	0	0	20.8	20.8		0	2	1.26	6.99		
22	BHA23	4.00	7.00	0.0	0.0	3	0	0	0.9	0.9	19.8	19.5		0	3	1.52	2.91		
23	BHA24	2.00	7.00	-1.3	0.0	4	0	0	0.5	0.3	16.6	18.0		0	3	DRY	6.90		
24	BHA25	2.00	7.00	0.0	0.0	4	0	0	0	0	20.3	20.5		0	1	0.95	6.99		
25	BHA26	1.00	7.00	-0.2	0.0	4	0	0	1.4	1.4	18.8	18.6		0	0	5.57	7.06		
26	BHA27	1.00	7.00	-0.1	0.0	4	0	0	0.5	0.5	17.1	15.8		0	1	5.74	6.89		
27	BHA28	2.20	5.70	0.0	0.0	4	0.1	0	0.7	0.2	16.9	19.2		0	4	0.97	6.65		
28	BHA29																		
29	BHA30	5.00	6.00	0.0	0.0	3	0	0	1.1	0.7	19.4	19.6		0	2	1.05	5.68		
30	BHA30	1.00	4.00	0.0	0.0	3	0	0	0.6	0.2	19.8	20.4		0	4	1.05	3.65		
31	BHA31	1.10	6.10	0.0	0.0	4	0	0	0	0	20.2	20.2		0	5	1.04	5.82		
32	BHA32	1.20	6.70	-0.1	0.0	3	0	0	2.8	3.2	18.8	17.9		0	3	1.83	6.22		

COMMENTS & GROUND CONDITIONS:

Groundwater and Ground Gas Monitoring Form



VISIT 11

Site Name	Northstowe
Client	Gallagher Estates
Job No.	12170626/002
Date	03/09/2007 - 05/09/2007
Start Time	
End Time	

Operator	AM/SS
Pressure at Start mB	1026
Pressure at End mB	1014
Weather Conditions	Warm, dry, overcast
Temperature oC	16.5

Equipment	Serial No.	Calibrated
Gas Analyser	GA2000	Yes
Dipmeter	30m	N/A
Interface Probe		
PID		

	Borehole	Response Zone (m)		Gas Flow (l/hr)		Borehole Pressure (mB)	Methane (% v/v)		Carbon Dioxide (% v/v)		Oxygen (% v/v)		Other Gasses (ppmV)			Depth to Water (m)	Depth to Base (m)	Thickness of product (mm)	Sampled? (Y/N)
		Top	Bottom	Initial	Steady		Initial	Steady	Initial	Steady	Initial	Steady	PID	H2S	CO				
1	BHA1	1.00	7.00	0.0	0.0	3	0	0	3.9	4	16.8	16.6		0	4	1.254	3.98		
2	BHA2	1.00	7.00	0.2	0.0	5	0	0	2.8	2.9	18.0	18.1		0	0	1.574	6.78		
3	BHA3	1.00	7.00	6.9	0.0	9	0	0	2.1	2.1	17.2	17.2		0	1	0.83	2.53	1	
4	BHA6	1.00	5.00	-7.8	0.0	14	0.1	0	5.6	4.4	14.2	15.2		0	5	0.934	3.29		
5	BHA7	1.00	3.70	13.0	0.0	14	0.1	0.1	7.7	7.8	14.9	14.7		0	2	1.24	3.72		
6	BHA10	0.80	7.00																
7	BHA12	1.00	7.00	-3.7	0.0	1	0	0.1	1.3	1.2	18.8	18.9		0	3	1.252	7.13		
8	BHA13	3.50	7.00	0.0	0.0	5	0.1	0	0.1	0.1	20.7	20.7		0	0	1.279	3.04		
9	BHA13	1.00	3.00	0.0	0.0	5	0.1	0	0	0	20.6	20.7		0	0	1.051	7.08		
10	BHA14	1.00	7.00	0.0	0.0	5	0	0	0.2	0.1	20.6	20.6		0	0	0.834	6.74		
11	BHA15	2.00	7.00	-0.4	0.0	5	0	0	0.4	0.1	19.8	20.3		0	0	5.761	6.90		
12	BHA16	1.00	7.00	0.1	0.0	5	0.1	0	1.2	1.2	18.8	18.7		0	0	5.4	6.93		
13	BHA17	1.50	7.00	-0.3	0.0	5	0	0	0.7	0.4	15.4	18.2		0	2	6.863	7.08		
14	BHA18	0.90	3.00	0.0	0.0	3	0	0	0.1	0.1	19.0	19.4		0	3	1.461	7.09		
15	BHA19	4.00	7.00	0.0	0.0	3	0	0	0.6	0.6	19.4	19.4		1	2	1.267	2.83	1	
16	BHA19	0.70	6.50	-3.7	-0.3	3	0	0	0.6	0.6	19.4	19.4		0	3	1.162	6.79		

COMMENTS & GROUND CONDITIONS:

Groundwater and Ground Gas Monitoring Form



VISIT 11

Site Name	Northstowe
Client	Gallagher Estates
Job No.	12170626/002
Date	03/09/2007 - 05/09/2007
Start Time	
End Time	

Operator	AM/SS
Pressure at Start mB	1026
Pressure at End mB	1014
Weather Conditions	Warm, dry, overcast
Temperature oC	16.5

Equipment	Serial No.	Calibrated
Gas Analyser	GA2000	Yes
Dipmeter	30m	N/A
Interface Probe		
PID		

	Borehole	Response Zone (m)		Gas Flow (l/hr)		Borehole Pressure (mB)	Methane (% v/v)		Carbon Dioxide (% v/v)		Oxygen (% v/v)		Other Gasses (ppmV)			Depth to Water (m)	Depth to Base (m)	Thickness of product (mm)	Sampled? (Y/N)
		Top	Bottom	Initial	Steady		Initial	Steady	Initial	Steady	Initial	Steady	PID	H2S	CO				
17	BHA20	0.90	3.00																
18	BHA20	4.00	7.00																
19	BHA21	0.70	6.50	0.0	0.0	3	0	0	0.1	0.1	20.2	20.2		1	2	1.392	6.45	1	
20	BHA22	1.20	8.00	-1.3	0.0	3	0	0	2.9	2.9	18.0	17.8		0	3	1.734	7.47		
21	BHA23	1.00	3.00	-1.4	0.3	5	0	0	0.1	0	20.4	20.5		0	0	1.351	7.08		
22	BHA23	4.00	7.00	-0.6	0.0	5	0.1	0	0.4	0.4	19.8	19.9		0	0	Dry	2.99		
23	BHA24	2.00	7.00	-1.1	0.1	5	0	0	0.6	0.3	16.7	19.0		0	1	Dry	6.98		
24	BHA25	2.00	7.00	-0.6	-0.1	5	0.1	0	0.1	0	20.2	20.5		0	1	0.913	7.09		
25	BHA26	1.00	7.00	0.1	0.0	5	0	0	1.2	1.2	18.3	18.0		0	0	5.196	7.17		
26	BHA27	1.00	7.00	0.1	0.1	5	0	0	0.4	0.3	14.4	16.4		0	3	4.954	7.00		
27	BHA28	2.20	5.70	0.0	0.0	5	0.1	0	0.1	0	19.8	20.3		0	2	0.993	6.74		
28	BHA29																		
29	BHA30	5.00	6.00	0.0	0.0	3	0	0	0.2	0.1	19.6	20.1		0	4	1.114	5.78		
30	BHA30	1.00	4.00	0.0	0.0	3	0	0	0.5	0.3	19.5	19.9		0	4	1.13	3.71	1	
31	BHA31	1.10	6.10	0.0	0.0	3	0	0	0	0	20.1	20.1		0	1	1.098	5.89	1	
32	BHA32	1.20	6.70	0.0	0.0	3	0.1	0	2.9	3	17.6	17.3		0	0	1.888	6.32	1	

COMMENTS & GROUND CONDITIONS:

Groundwater and Ground Gas Monitoring Form



VISIT 12

Site Name	Northstowe
Client	Gallagher Estates
Job No.	12170626/002
Date	23.10.07 - 25.10.07
Start Time	
End Time	

Operator	RLC/CP/AS
Pressure at Start mB	1030
Pressure at End mB	1020
Weather Conditions	Foggy start to Dry/Cool/Light Breeze
Temperature oC	

Equipment	Serial No.	Calibrated
Gas Analyser	GA2000	Yes
Dipmeter	30m	N/A
Interface Probe		
PID		

	Borehole	Response Zone (m)		Gas Flow (l/hr)		Borehole Pressure (mB)	Methane (% v/v)		Carbon Dioxide (% v/v)		Oxygen (% v/v)		Other Gasses (ppmV)			Depth to Water (m)	Depth to Base (m)	Thickness of product (mm)	Sampled? (Y/N)
		Top	Bottom	Initial	Steady		Initial	Steady	Initial	Steady	Initial	Steady	PID	H2S	CO				
1	BHA1	1.00	7.00	0.3	0.2	1	0	0	2.7	2.9	19.8	17.3		0	2	1.71	-		
2	BHA2	1.00	7.00	0.0	0.0	0	0	0	1.5	1.5	19.0	18.7		0	3	1.42	-		
3	BHA3	1.00	7.00	-0.2	0.0	5	0	0	1.3	1	19.7	19.7		0	0	0.64	5.01		
4	BHA6	1.00	5.00																
5	BHA7	1.00	3.70																
6	BHA10	0.80	7.00																
7	BHA12	1.00	7.00																
8	BHA13	2.00	7.00	0.2	0.0	7	0	0	0.4	0.3	20.2	20.2		0	0	1.02	3.02		
9	BHA13	1.00	7.00	-3.4	0.0	7	0	0	0.2	0.1	20.2	20.1		0	0	0.87	-		
10	BHA14	1.50	7.00	0.0	0.0	7	0	0	1.2	0.5	16.8	18.6		0	0	6.63	6.71		
11	BHA15	1.00	7.00	-0.6	0.0	5	0	0	0.4	0.1	19.8	20.1		0	0	5.24	6.84		
12	BHA16	4.00	7.00	0.0	0.0	0	0	0	0.7	0.7	19.4	19.3		0	0	5.78	-		
13	BHA17	0.70	6.50	-0.4	0.0	7	0	0	0.9	0.4	17.3	18.8		0	0	6.44	7.03		
14	BHA18	0.90	3.00	0.0	0.0	7	0	0	0.4	0.1	15.4	18.4		0	0	0.77	7.02		
15	BHA19	4.00	7.00	0.0	0.0	8	0	0	0.4	0.2	20.2	20.4		0	0	1.06	2.57		
16	BHA19	0.70	6.50	0.0	0.0	8	0	0	0.2	0.1	20.3	20.3		0	0	1.28	6.28		

COMMENTS & GROUND CONDITIONS: BHA6, BHA10 & BHA12 - Unable to access due to presence of longhorned cattle

Groundwater and Ground Gas Monitoring Form



VISIT 12

Site Name	Northstowe
Client	Gallagher Estates
Job No.	12170626/002
Date	23.10.07 - 25.10.07
Start Time	
End Time	

Operator	RLC/CP/AS
Pressure at Start mB	1030
Pressure at End mB	1020
Weather Conditions	Foggy start to Dry/Cool/Light Breeze
Temperature oC	

Equipment	Serial No.	Calibrated
Gas Analyser	GA2000	Yes
Dipmeter	30m	N/A
Interface Probe		
PID		

	Borehole	Response Zone (m)		Gas Flow (l/hr)		Borehole Pressure (mB)	Methane (% v/v)		Carbon Dioxide (% v/v)		Oxygen (% v/v)		Other Gasses (ppmV)			Depth to Water (m)	Depth to Base (m)	Thickness of product (mm)	Sampled? (Y/N)
		Top	Bottom	Initial	Steady		Initial	Steady	Initial	Steady	Initial	Steady	PID	H2S	CO				
17	BHA20	0.90	3.00	0.2	0.2	1	0	0	0	0	20	19.5		0	2	1.46	-		
18	BHA20	4.00	7.00	0.2	0.2	1	0	0	1.9	1.9	18.8	18.1		0	2	1.45	-		
19	BHA21	0.70	6.50	0.0	0.0	1	0	0	0.4	0.1	20.0	20.4		0	4	1.39	-		
20	BHA22	1.20	8.00	0.2	0.2	1	0	0	0.6	1.2	20.3	18.9		0	1	1.71	-		
21	BHA23	1.00	3.00	0.0	0.0	0	0	0	0	0	20.2	20.5		0	1	1.71	-		
22	BHA23	4.00	7.00	0.0	0.0	0	0	0	0.4	0.6	20.1	19.5		0	3	1.42	-		
23	BHA24	2.00	7.00	0.0	0.0	0	0	0	1.2	0.3	15.6	19.4		0	1	5.60	-		
24	BHA25	2.00	7.00	0.3	0.3	1	0	0	0.1	0.1	20.6	20.6		0	0	0.51	-		
25	BHA26	1.00	7.00	0.0	0.0	1	0	0	0.4	0.4	19.8	19.7		0	1	5.33	-		
26	BHA27	1.00	7.00	0.0	0.0	0	0	0	1.6	0.7	15.2	17.9		0	0	4.65	-		
27	BHA28	2.20	5.70	0.0	0.0	0	0	0	0	0	20.6	20.8		0	1	0.89	-		
28	BHA29			0.1	0	0	0	0	1.3	1.3	18.8	18.7		0	0	1.40	6.67		
29	BHA30	5.00	6.00	0.2	0.1	1	0	0	0.8	0.3	19.7	20.0		0	0	1.11	-		
30	BHA30	1.00	4.00	0.1	0.1	1	0	0	0.5	0.1	19.9	20.3		0	1	1.11	-		
31	BHA31	1.10	6.10	-1.2	0.0	3	0	0	0	0	20.2	20.3		0	0	1.02	5.85		
32	BHA32	1.20	6.70	0.0	0.1	1	0	0	2.6	2.6	18.6	17.4		0	1	1.84	-		

COMMENTS & GROUND CONDITIONS: BHA09 - two bungs; bung with tap in side of pipe. Too tall to place cover over top, bung in pipe - no tap and covered with gaffa tape. BHA25 - no PID reading. BHA7 - lost

Groundwater and Ground Gas Monitoring Form



VISIT 13

Site Name	Northstowe
Client	Gallagher Estates
Job No.	12170626/004
Date	20-21.11.07
Start Time	10.00 am
End Time	

Operator	Phil Webb
Pressure at Start mB	999
Pressure at End mB	1003
Weather Conditions	Rained night before, damp
Temperature oC	

Equipment	Serial No.	Calibrated
Gas Analyser	GA2000	Yes
Dipmeter		
Interface Probe		
PID		

	Borehole	Response Zone (m)		Gas Flow (l/hr)		Borehole Pressure (mB)	Methane (% v/v)		Carbon Dioxide (% v/v)		Oxygen (% v/v)		Other Gasses (ppmV)			Depth to Water (m)	Depth to Base (m)	Thickness of product (mm)	Sampled? (Y/N)
		Top	Bottom	Initial	Steady		Initial	Steady	Initial	Steady	Initial	Steady	PID	H2S	CO				
1	BHA1			+0.1	-0.5	+2.14	0	0.1	0	0.7	20.8	20.3		0	3	1.29	3.41		
2	BHA2			-0.3	-0.2	-1.05	0	0	0	0.1	20.5	20.4		0	0	0.41	6.75		
3	BHA3																		
4	BHA6																		
5	BHA7																		
6	BHA10																		
7	BHA12																		
8	BHA13			+0.01	+0.01	-0.05	0	0	0.1	0.3	20.7	20.5		0	0	1.09	1.43		
9	BHA13			+0.1	+0.1	-0.05	0	0	0.1	0.2	20.6	20.5		0	1	1.08	1.98		
10	BHA14			0.8	+0.1	+2.53	0	0.1	0	0.2	20.3	20.4		0	0	0.695	6.093		
11	BHA15			0.0	+0.1	+8.12	0	0	0	0.1	20.1	20.6		0	0	4.96	6.77		
12	BHA16			+0.2	+0.2	-0.14	0	0	0	0.8	20.6	19.9		0	0	5.52	7.11		
13	BHA17			0.4	0.5	+0.04	0	0	0	0.6	20.7	19.5		0	1	6.26	7.12		
14	BHA18			-0.2	+0.3	-3.77	0	0	0	0.1	20.5	20.7		0	3	0.95	6.45		
15	BHA19			0.2	+0.4	+5.62	0	0	0	0.1	20.5	20.4		0	1	1.18	2.73		
16	BHA19			-2.9	+0.2	+5.58	0	0.1	0.1	0	20.4	20.5		0	1	1.17	6.38		

COMMENTS & GROUND CONDITIONS:

Groundwater and Ground Gas Monitoring Form



VISIT 13

Site Name	Northstowe
Client	Gallagher Estates
Job No.	12170626/004
Date	20-21.11.07
Start Time	10.00 am
End Time	

Operator	Phil Webb
Pressure at Start mB	999
Pressure at End mB	1003
Weather Conditions	Rained night before, damp
Temperature oC	

Equipment	Serial No.	Calibrated
Gas Analyser	GA2000	Yes
Dipmeter		
Interface Probe		
PID		

	Borehole	Response Zone (m)		Gas Flow (l/hr)		Borehole Pressure (mB)	Methane (% v/v)		Carbon Dioxide (% v/v)		Oxygen (% v/v)		Other Gasses (ppmV)			Depth to Water (m)	Depth to Base (m)	Thickness of product (mm)	Sampled? (Y/N)
		Top	Bottom	Initial	Steady		Initial	Steady	Initial	Steady	Initial	Steady	PID	H2S	CO				
17	BHA20			-0.8	0.02	+0.10	0	0	1.6	1.5	20.2	20.1		0	1	1.48			
18	BHA20																		
19	BHA21			0.3	0.4	+8.68	0	0	0	0.4	20.6	20.2		0	2	1.41	6.58		
20	BHA22			-1.9	-0.5	+4.38	0	0	0	2.1	20.7	19.5		0	2	1.13	7.55		
21	BHA23			-0.2	-0.4	+10.72	0	0	0	0	20.6	20.7		0	6	1.33	2.04		
22	BHA23			+0.1	-0.4	+8.85	0	0.1	0	0.5	20.8	20.0		0	2	1.47	6.79		
23	BHA24			+0.4	+0.3	+5.01	0	0.1	0	0.8	20.4	17.8		0	2	4.96	7.14		
24	BHA25			-0.6	-0.79	+0.20	0	0	0	0.1	20.2	20.3		0	0	0.86	6.48		
25	BHA26			0.4	0.3	+4.51	0	0	0	0.1	20.8	20.7		0	0	4.48	7.35		
26	BHA27			-0.1	+0.1	+3.09	0	0	0.4	1	18.2	15.6		0	0	3.57	6.92		
27	BHA28			+0.1	0.0	=13.09	0	0	0	0.2	20.5	20.1		0	2	0.95	6.72		
28	BHA29			+0.3	+0.2	-2.22	0	0	0	0	20.4	20.6		0	3	1.48	6.82		
29	BHA30			0.0	+0.2	+1.97	0	0	0	0.3	19.9	19.6		0	4	1.10	3.18		
30	BHA30			+0.1	0.0	+5.11	0	0	0	0.7	18.5	14.6		0	1	1.08	5.82		
31	BHA31			-0.2	-0.3	+2.83	0	0.1	0	0	20.4	20.7		0	3	1.01	5.90		
32	BHA32			-0.2	-0.4	+0.04	0	0	0	0.1	20.4	20.0		0	3	1.58	6.66		

COMMENTS & GROUND CONDITIONS:

Groundwater and Ground Gas Monitoring Form



VISIT 1

Site Name	Northstowe
Client	Gallagher Estates
Job No.	12170626
Date	13/11/2006 - 20/11/2006
Start Time	
End Time	

Operator	RC/LF/CW
Pressure at Start mB	1007
Pressure at End mB	986
Weather Conditions	Overcast, drizzle
Temperature oC	

Equipment	Serial No.	Calibrated
Gas Analyser	GA2000	Yes
Dipmeter	30m	N/A
Interface Probe		
PID		

	Borehole	Response Zone (m)		Gas Flow (l/hr)		Borehole Pressure (mB)	Methane (% v/v)		Carbon Dioxide (% v/v)		Oxygen (% v/v)		Other Gasses (ppmV)			Depth to Water (m)	Depth to Base (m)	Thickness of product (mm)	Sampled? (Y/N)
		Top	Bottom	Initial	Steady		Initial	Steady	Initial	Steady	Initial	Steady	PID	H2S	CO				
1	BHD 1	0.00	0.00	0.0	0.0		0	0	0.2	0.2	19.2	19.3				0.86	6.22		
2	BHD 2	0.00	0.00	0.0	0.0		0	0	0.9	1.8	18.5	19.0				0.77	6.05		
3	BHD 3	1.00	7.00	0.0	0.0		0	0	0.8	1.1	18.6	18.9				2.09	6.89		
4	BHD 5	0.00	0.00	0.0	0.0		0	0	2.4	2.4	17.1	17.5				1.89	6.46		
5	BHD 6	0.00	0.00																
6																			
7																			
8																			
9																			
10																			
11																			
12																			
13																			
14																			
15																			
16																			
COMMENTS & GROUND CONDITIONS:																			

Groundwater and Ground Gas Monitoring Form



VISIT 2

Site Name	Northstowe
Client	Gallagher Estates
Job No.	12170626
Date	29/01/2007 - 01/02/2007
Start Time	
End Time	

Operator	RC/LF/CW
Pressure at Start mB	1026
Pressure at End mB	1025
Weather Conditions	Sunny, dry, cool, windy
Temperature oC	

Equipment	Serial No.	Calibrated
Gas Analyser	GA2000	Yes
Dipmeter	30m	N/A
Interface Probe		
PID		

	Borehole	Response Zone (m)		Gas Flow (l/hr)		Borehole Pressure (mB)	Methane (% v/v)		Carbon Dioxide (% v/v)		Oxygen (% v/v)		Other Gasses (ppmV)			Depth to Water (m)	Depth to Base (m)	Thickness of product (mm)	Sampled? (Y/N)
		Top	Bottom	Initial	Steady		Initial	Steady	Initial	Steady	Initial	Steady	PID	H2S	CO				
1	BHD 1			0.0	0.0		0	0	0.1	0.1	21.1	21.2				0.61			
2	BHD 2			0.0	0.0		0	0	0.9	0.9	20.7	20.8				0.76	6.04		
3	BHD 3	1.00	7.00	0.0	0.0		0	0	0.3	0.4	20.7	20.9				1.01	6.93		
4	BHD 5			0.1	0.1		0	0	1	1	19.4	19.5				1.03	6.41		
5	BHD 6																		
6																			
7																			
8																			
9																			
10																			
11																			
12																			
13																			
14																			
15																			
16																			

COMMENTS & GROUND CONDITIONS:

Groundwater and Ground Gas Monitoring Form



VISIT 3

Site Name	Northstowe
Client	Gallagher Estates
Job No.	12170626
Date	19/02/2007 - 21/02/2007
Start Time	
End Time	

Operator	RC/LF/CW
Pressure at Start mB	1009
Pressure at End mB	1000
Weather Conditions	Wet, drizzle
Temperature oC	

Equipment	Serial No.	Calibrated
Gas Analyser	GA2000	Yes
Dipmeter	30m	N/A
Interface Probe		
PID		

	Borehole	Response Zone (m)		Gas Flow (l/hr)		Borehole Pressure (mB)	Methane (% v/v)		Carbon Dioxide (% v/v)		Oxygen (% v/v)		Other Gasses (ppmV)			Depth to Water (m)	Depth to Base (m)	Thickness of product (mm)	Sampled? (Y/N)
		Top	Bottom	Initial	Steady		Initial	Steady	Initial	Steady	Initial	Steady	PID	H2S	CO				
1	BHD 1			1.1	1.1		0	0	0.1	0.1	20.8	21.0				0.573	6.10		
2	BHD 2			1.0	1.0		0	0	0.1	0.1	20.9	21.1				0.892	6.00		
3	BHD 3	1.00	7.00	0.8	0.8		0	0	0.1	0.1	21.0	21.1				0.801	6.98		
4	BHD 5			1.2	1.2		0	0	0.1	0.1	20.9	21.1				0.946	6.44		
5	BHD 6																		
6																			
7																			
8																			
9																			
10																			
11																			
12																			
13																			
14																			
15																			
16																			

COMMENTS & GROUND CONDITIONS:

Groundwater and Ground Gas Monitoring Form



VISIT 4

Site Name	Northstowe
Client	Gallagher Estates
Job No.	12170626
Date	28/03/2007 - 29/03/2007
Start Time	
End Time	

Operator	RC/CW
Pressure at Start mB	1014
Pressure at End mB	1009
Weather Conditions	Wet, foggy
Temperature oC	

Equipment	Serial No.	Calibrated
Gas Analyser	GA2000	Yes
Dipmeter	30m	N/A
Interface Probe		
PID		

	Borehole	Response Zone (m)		Gas Flow (l/hr)		Borehole Pressure (mB)	Methane (% v/v)		Carbon Dioxide (% v/v)		Oxygen (% v/v)		Other Gasses (ppmV)			Depth to Water (m)	Depth to Base (m)	Thickness of product (mm)	Sampled? (Y/N)
		Top	Bottom	Initial	Steady		Initial	Steady	Initial	Steady	Initial	Steady	PID	H2S	CO				
1	BHD 1			-0.1	-0.1		0	0	0	0	21.9	22.0				0.86			
2	BHD 2			0.0	0.0		0	0	2.2	2.2	18.1	18.5				0.885			
3	BHD 3	1.00	7.00	0.8	0.8		0	0	0	0	21.1	21.3				1.18			
4	BHD 5			0.1	0.1		0	0	1.8	1.8	19.6	19.7				1.19			
5	BHD 6															0.6			
6																			
7																			
8																			
9																			
10																			
11																			
12																			
13																			
14																			
15																			
16																			
COMMENTS & GROUND CONDITIONS: BHD06 no bung																			

Groundwater and Ground Gas Monitoring Form



VISIT 5

Site Name	Northstowe
Client	Gallagher Estates
Job No.	12170626
Date	17/04/2007 - 19/04/2007
Start Time	
End Time	

Operator	RC/CW
Pressure at Start mB	1021
Pressure at End mB	1014
Weather Conditions	Dry, sunny, slightly windy
Temperature oC	

Equipment	Serial No.	Calibrated
Gas Analyser	GA2000	Yes
Dipmeter	30m	N/A
Interface Probe		
PID		

	Borehole	Response Zone (m)		Gas Flow (l/hr)		Borehole Pressure (mB)	Methane (% v/v)		Carbon Dioxide (% v/v)		Oxygen (% v/v)		Other Gasses (ppmV)			Depth to Water (m)	Depth to Base (m)	Thickness of product (mm)	Sampled? (Y/N)
		Top	Bottom	Initial	Steady		Initial	Steady	Initial	Steady	Initial	Steady	PID	H2S	CO				
1	BHD 1			-0.1	-0.1		0	0	0.5	0.5	20.1	20.1				1.025			
2	BHD 2			0.1	0.1		0	0	2.6	2.7	17.8	18.0				0.985			
3	BHD 3	1.00	7.00	-0.1	-0.1		0	0	0.6	0.6	20.4	20.5				1.37			
4	BHD 5			0.1	0.1		0	0	1.6	1.6	19.9	20.0				1.355			
5	BHD 6																		
6																			
7																			
8																			
9																			
10																			
11																			
12																			
13																			
14																			
15																			
16																			

COMMENTS & GROUND CONDITIONS:

Groundwater and Ground Gas Monitoring Form



VISIT 6

Site Name	Northstowe
Client	Gallagher Estates
Job No.	12170626
Date	22/05/2007 - 25/05/2007
Start Time	
End Time	

Operator	RC/CW
Pressure at Start mB	1020
Pressure at End mB	1000
Weather Conditions	
Temperature oC	

Equipment	Serial No.	Calibrated
Gas Analyser	GA2000	Yes
Dipmeter	30m	N/A
Interface Probe		
PID		

	Borehole	Response Zone (m)		Gas Flow (l/hr)		Borehole Pressure (mB)	Methane (% v/v)		Carbon Dioxide (% v/v)		Oxygen (% v/v)		Other Gasses (ppmV)			Depth to Water (m)	Depth to Base (m)	Thickness of product (mm)	Sampled? (Y/N)
		Top	Bottom	Initial	Steady		Initial	Steady	Initial	Steady	Initial	Steady	PID	H2S	CO				
1	BHD 1			0.0	0.0		0	0	0.7	0.7	19.1	19.2				4.33	6.13		
2	BHD 2			0.0	0.0		0	0	2.7	2.7	12.9	13.0				0.96	6.07		
3	BHD 3	1.00	7.00	0.0	0.0		0	0	0.7	0.7	19.0	19.1				1.57	7.00		
4	BHD 5			0.0	0.0		0	0	0.7	0.8	19.0	19.0				1.54	6.40		
5	BHD 6															0.9	5.80		
6																			
7																			
8																			
9																			
10																			
11																			
12																			
13																			
14																			
15																			
16																			
COMMENTS & GROUND CONDITIONS:																			

Groundwater and Ground Gas Monitoring Form



VISIT 7

Site Name	Northstowe
Client	Gallagher Estates
Job No.	12170626
Date	18/06/2007 - 22/06/2007
Start Time	
End Time	

Operator	RC/AM./CW
Pressure at Start mB	1005
Pressure at End mB	1004
Weather Conditions	Dry, sunny, windy
Temperature oC	

Equipment	Serial No.	Calibrated
Gas Analyser	GA2000	Yes
Dipmeter	30m	N/A
Interface Probe		
PID		

	Borehole	Response Zone (m)		Gas Flow (l/hr)		Borehole Pressure (mB)	Methane (% v/v)		Carbon Dioxide (% v/v)		Oxygen (% v/v)		Other Gasses (ppmV)			Depth to Water (m)	Depth to Base (m)	Thickness of product (mm)	Sampled? (Y/N)
		Top	Bottom	Initial	Steady		Initial	Steady	Initial	Steady	Initial	Steady	PID	H2S	CO				
1	BHD 1																		
2	BHD 2			0.0	0.0	1	0	0	1.5	1.8	16.8	17.5		0	0	0.776	4.85		
3	BHD 3	1.00	7.00	0.0	0.0	1	0	0	1.3	1.3	18.3	18.3		0	0	1.924	7.75		
4	BHD 5			0.0	0.0	0	0	0	0.5	0.7	18.8	19.8		0	0	1.455	6.48		
5	BHD 6															0.549	3.87		
6																			
7																			
8																			
9																			
10																			
11																			
12																			
13																			
14																			
15																			
16																			

COMMENTS & GROUND CONDITIONS:

Groundwater and Ground Gas Monitoring Form



VISIT 8

Site Name	Northstowe
Client	Gallagher Estates
Job No.	12170626
Date	23/07/2007 - 25/07/2007
Start Time	
End Time	

Operator	AM/SS/CW
Pressure at Start mB	1010
Pressure at End mB	1006
Weather Conditions	Dry, overcast, light breeze
Temperature oC	

Equipment	Serial No.	Calibrated
Gas Analyser	GA2000	Yes
Dipmeter	30m	N/A
Interface Probe		
PID		

	Borehole	Response Zone (m)		Gas Flow (l/hr)		Borehole Pressure (mB)	Methane (% v/v)		Carbon Dioxide (% v/v)		Oxygen (% v/v)		Other Gasses (ppmV)			Depth to Water (m)	Depth to Base (m)	Thickness of product (mm)	Sampled? (Y/N)
		Top	Bottom	Initial	Steady		Initial	Steady	Initial	Steady	Initial	Steady	PID	H2S	CO				
1	BHD 1			0.0	0.0	0	0	0	1.1	0.9	18.9	19.1		0	0	0.95	6.15		
2	BHD 2			0.0	0.0	0	0	0	6	6	11.1	11.1		0	0	0.87	6.05		
3	BHD 3	1.00	7.00	0.1	0.0	1	0	0	2.8	2.8	16.4	16.4		0	0	1.345	7.03		
4	BHD 5			0.1	0.0	1	0	0	1.8	2	18.2	18.1		0	0	1.38	6.41		
5	BHD 6														0.645	6.22			
6																			
7																			
8																			
9																			
10																			
11																			
12																			
13																			
14																			
15																			
16																			

COMMENTS & GROUND CONDITIONS:

Groundwater and Ground Gas Monitoring Form



VISIT 9

Site Name	Northstowe
Client	Gallagher Estates
Job No.	12170626
Date	13/08/2007 - 15/08/2007
Start Time	
End Time	

Operator	RC/SS/AM/CW
Pressure at Start mB	1006
Pressure at End mB	981
Weather Conditions	Dry, overcast, windy
Temperature oC	

Equipment	Serial No.	Calibrated
Gas Analyser	GA2000	Yes
Dipmeter	30m	N/A
Interface Probe		
PID		

	Borehole	Response Zone (m)		Gas Flow (l/hr)		Borehole Pressure (mB)	Methane (% v/v)		Carbon Dioxide (% v/v)		Oxygen (% v/v)		Other Gasses (ppmV)			Depth to Water (m)	Depth to Base (m)	Thickness of product (mm)	Sampled? (Y/N)
		Top	Bottom	Initial	Steady		Initial	Steady	Initial	Steady	Initial	Steady	PID	H2S	CO				
1	BHD 1			0.0	0.0	0	0	0	1	1	20.0	20.0		0	0	1.165	6.43		
2	BHD 2			0.1	0.0	0	0	0	5.9	5.9	15.5	15.5		0	0	0.98			
3	BHD 3	1.00	7.00	-0.1	0.0	0	0	0	2.2	2.2	19.5	19.5		0	0	1.52	7.09		
4	BHD 5			-0.1	0.0	0	0	0	1.4	1.4	20.0	20.0		0	0	1.56	6.59		
5	BHD 6														0.85	6.21			
6																			
7																			
8																			
9																			
10																			
11																			
12																			
13																			
14																			
15																			
16																			

COMMENTS & GROUND CONDITIONS:

Groundwater and Ground Gas Monitoring Form



VISIT 10

Site Name	Northstowe
Client	Gallagher Estates
Job No.	12170626
Date	03/09/2007 - 05/09/2007
Start Time	
End Time	

Operator	AM/SS
Pressure at Start mB	1026
Pressure at End mB	1014
Weather Conditions	Warm, dry, overcast
Temperature oC	

Equipment	Serial No.	Calibrated
Gas Analyser	GA2000	Yes
Dipmeter	30m	N/A
Interface Probe		
PID		

	Borehole	Response Zone (m)		Gas Flow (l/hr)		Borehole Pressure (mB)	Methane (% v/v)		Carbon Dioxide (% v/v)		Oxygen (% v/v)		Other Gasses (ppmV)			Depth to Water (m)	Depth to Base (m)	Thickness of product (mm)	Sampled? (Y/N)
		Top	Bottom	Initial	Steady		Initial	Steady	Initial	Steady	Initial	Steady	PID	H2S	CO				
1	BHD 1			0.0	0.0	0	0	0	0.4	0.3	19.9	20.0		0	0	3.58	6.19		
2	BHD 2			0.0	0.0	0	0	0	3.4	3.4	16.6	16.6		0	0	0.94	5.97		
3	BHD 3	1.00	7.00	-0.1	0.0	0	0	0	2.2	2.2	18.3	18.3		0	0	1.38	7.04		
4	BHD 5			0.0	0.0	0	0	0	1.5	1.5	18.7	18.7		0	0	1.59	6.42		
5	BHD 6														1.02	6.30			
6																			
7																			
8																			
9																			
10																			
11																			
12																			
13																			
14																			
15																			
16																			

COMMENTS & GROUND CONDITIONS: BHD 6 Cant gas as the hole is out of reach. BHD 12 was originally unable to gas as bung was jammed, but has now been destroyed so it can only be dipped.

Groundwater and Ground Gas Monitoring Form



VISIT 11

Site Name	Northstowe
Client	Gallagher Estates
Job No.	12170626
Date	20-21.11.07
Start Time	
End Time	

Operator	EAB/RC
Pressure at Start mB	1006
Pressure at End mB	1006
Weather Conditions	Damp, cold, misty
Temperature oC	

Equipment	Serial No.	Calibrated
Gas Analyser	GA2000	Yes
Dipmeter		
Interface Probe	30m	N/A
PID		

	Borehole	Response Zone (m)		Gas Flow (l/hr)		Borehole Pressure (mB)	Methane (% v/v)		Carbon Dioxide (% v/v)		Oxygen (% v/v)		Other Gasses (ppmV)			Depth to Water (m)	Depth to Base (m)	Thickness of product (mm)	Sampled? (Y/N)
		Top	Bottom	Initial	Steady		Initial	Steady	Initial	Steady	Initial	Steady	PID	H2S	CO				
1	BHD 1			0.0	-0.1	0	0	0	0.5	0.5	20.6	20.5		0	0	0.84	6.06		
2	BHD 2			0.1	0.1	0	0	0	1.3	0.8	19.9	19.9		0	0	0.88	1.90		
3	BHD 3	1.00	7.00	0.1	0.1	0	0	0	0.1	1.2	20.4	20.2		0	0	1.22	6.99		
4	BHD 5																		
5	BHD 6														0.74	5.02			
6																			
7																			
8																			
9																			
10																			
11																			
12																			
13																			
14																			
15																			
16																			
COMMENTS & GROUND CONDITIONS: BHD19 can't dip																			

Groundwater and Ground Gas Monitoring Form



VISIT 12

Site Name	Northstowe
Client	Gallagher Estates
Job No.	12170626
Date	04-06.12.07
Start Time	
End Time	

Operator	EAB/VB
Pressure at Start mB	1001
Pressure at End mB	1000
Weather Conditions	Damp, cold, overcast
Temperature oC	

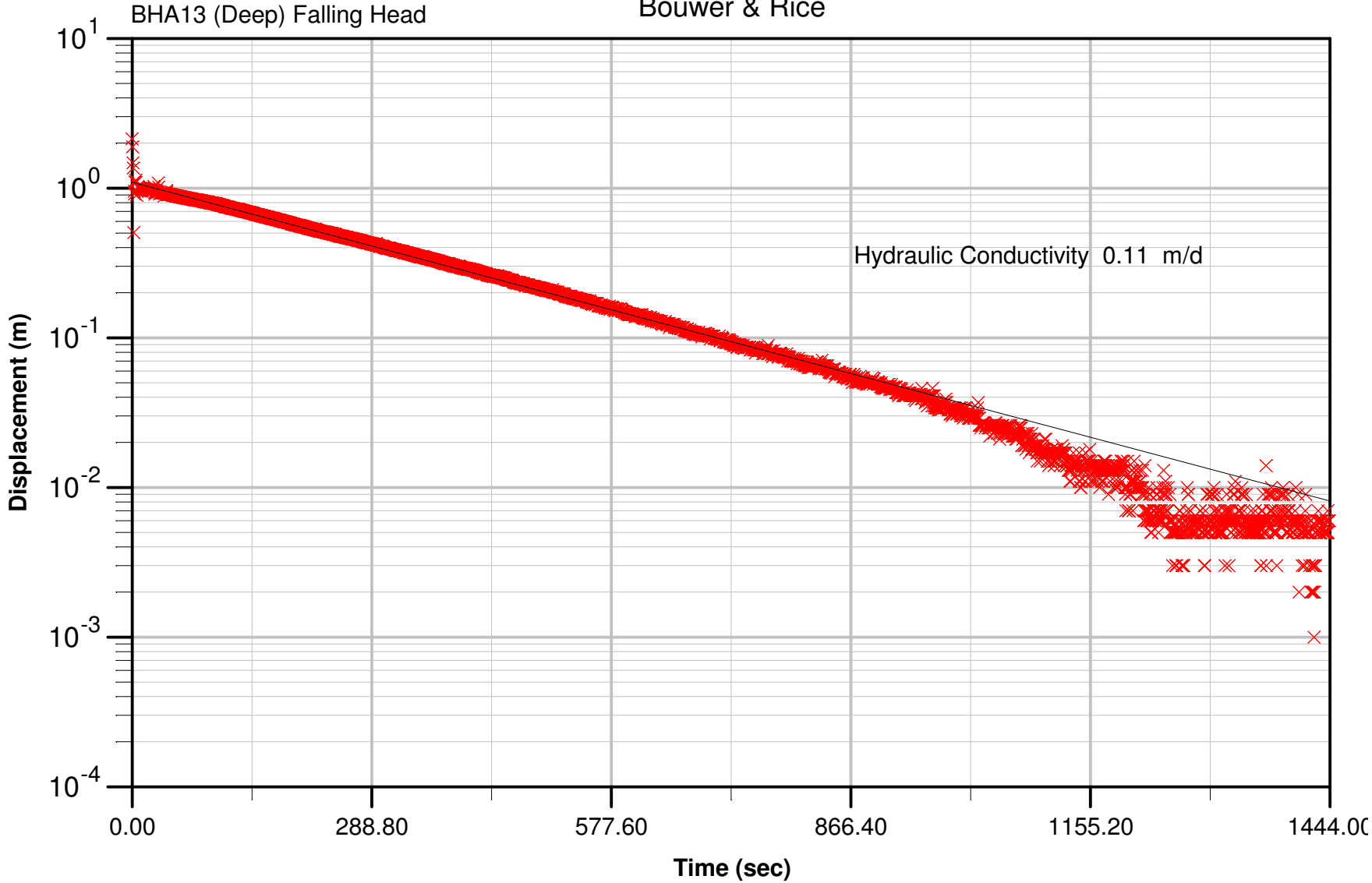
Equipment	Serial No.	Calibrated
Gas Analyser	GA2000	Yes
Dipmeter		
Interface Probe	30m	N/A
PID		

	Borehole	Response Zone (m)		Gas Flow (l/hr)		Borehole Pressure (mB)	Methane (% v/v)		Carbon Dioxide (% v/v)		Oxygen (% v/v)		Other Gasses (ppmV)			Depth to Water (m)	Depth to Base (m)	Thickness of product (mm)	Sampled? (Y/N)
		Top	Bottom	Initial	Steady		Initial	Steady	Initial	Steady	Initial	Steady	PID	H2S	CO				
1	BHD 1			-0.3	0.0	0	0	0	0.1	0.1	20.1	20.9		0	0	0.72	6.12		
2	BHD 2			-0.1	0.0	0	0	0	1.6	1.3	19.6	19.5		0	0	0.75	5.94		
3	BHD 3	1.00	7.00	-0.7	-0.4	0	0	0	0.7	0.6	20.6	20.6		0	0	1.03	7.01		
4	BHD 5																		
5	BHD 6														0.98	6.26			
6																			
7																			
8																			
9																			
10																			
11																			
12																			
13																			
14																			
15																			
16																			

COMMENTS & GROUND CONDITIONS: BHD19 no dip as bung stuck. BHD12 dip only as installation broken. BHD6 bung removed and pipe pulled out so dip only.

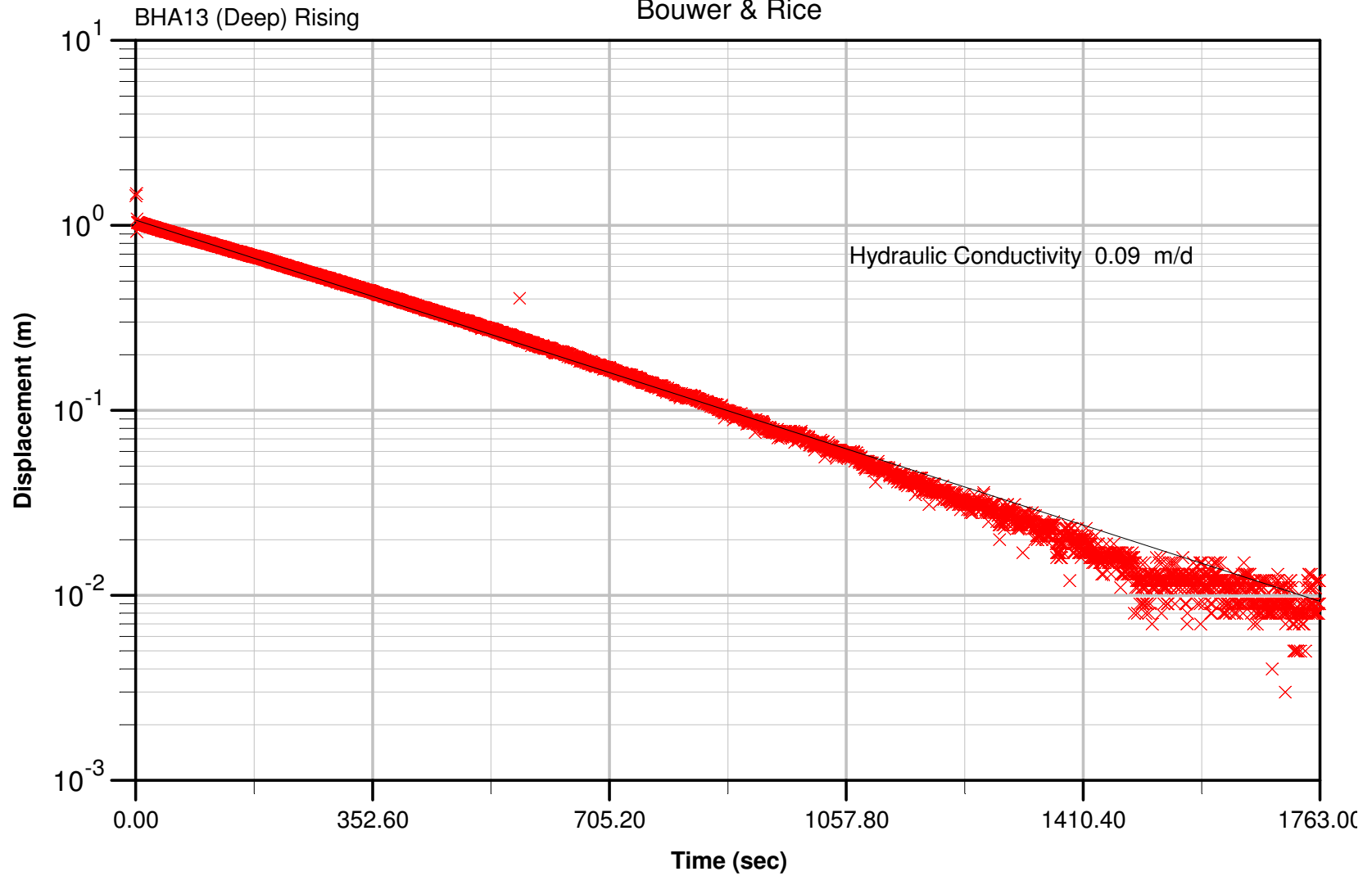
Northstowe New Town

Bouwer & Rice



Northstowe New Town

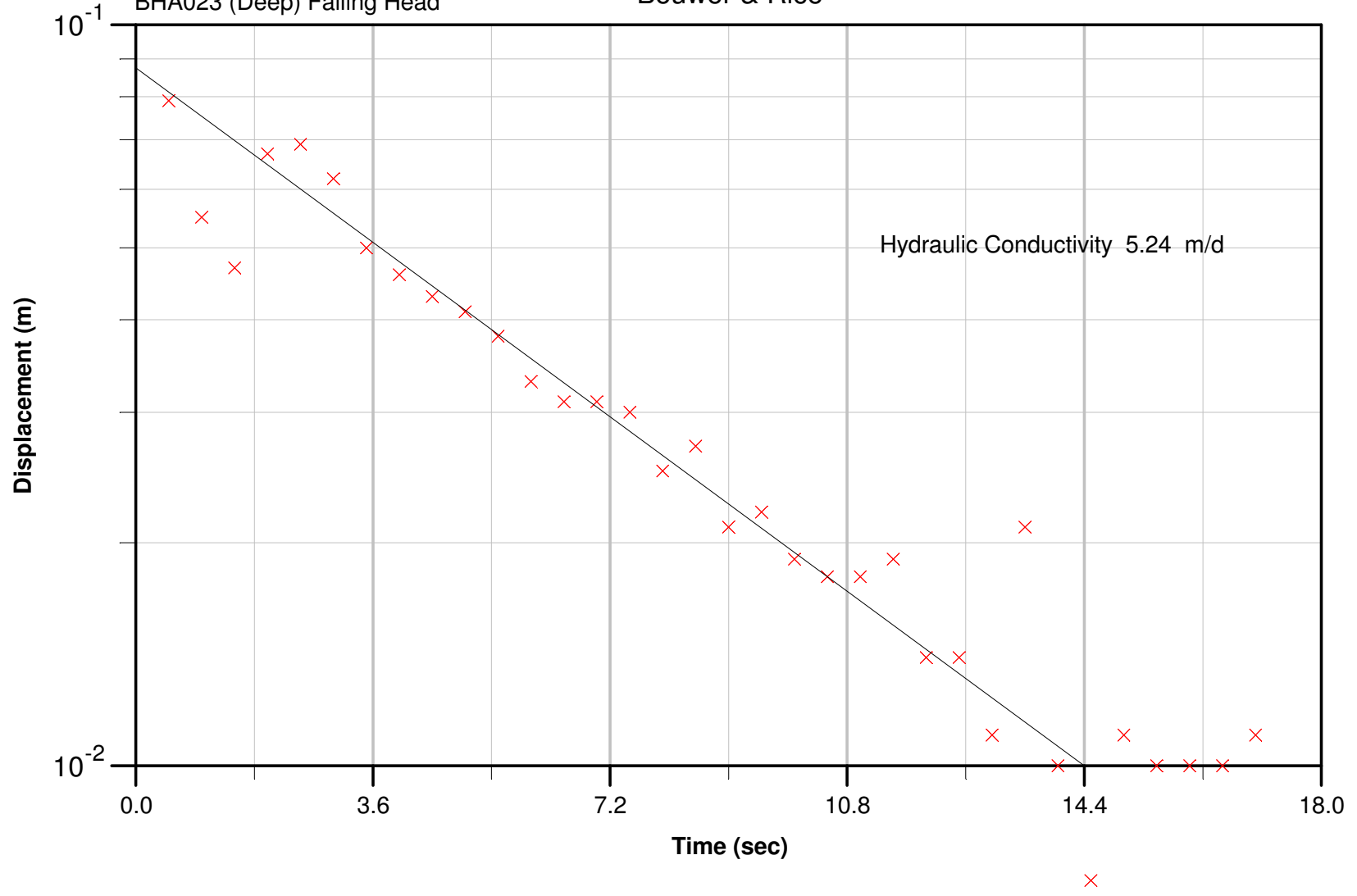
Bouwer & Rice



Northstowe New Town

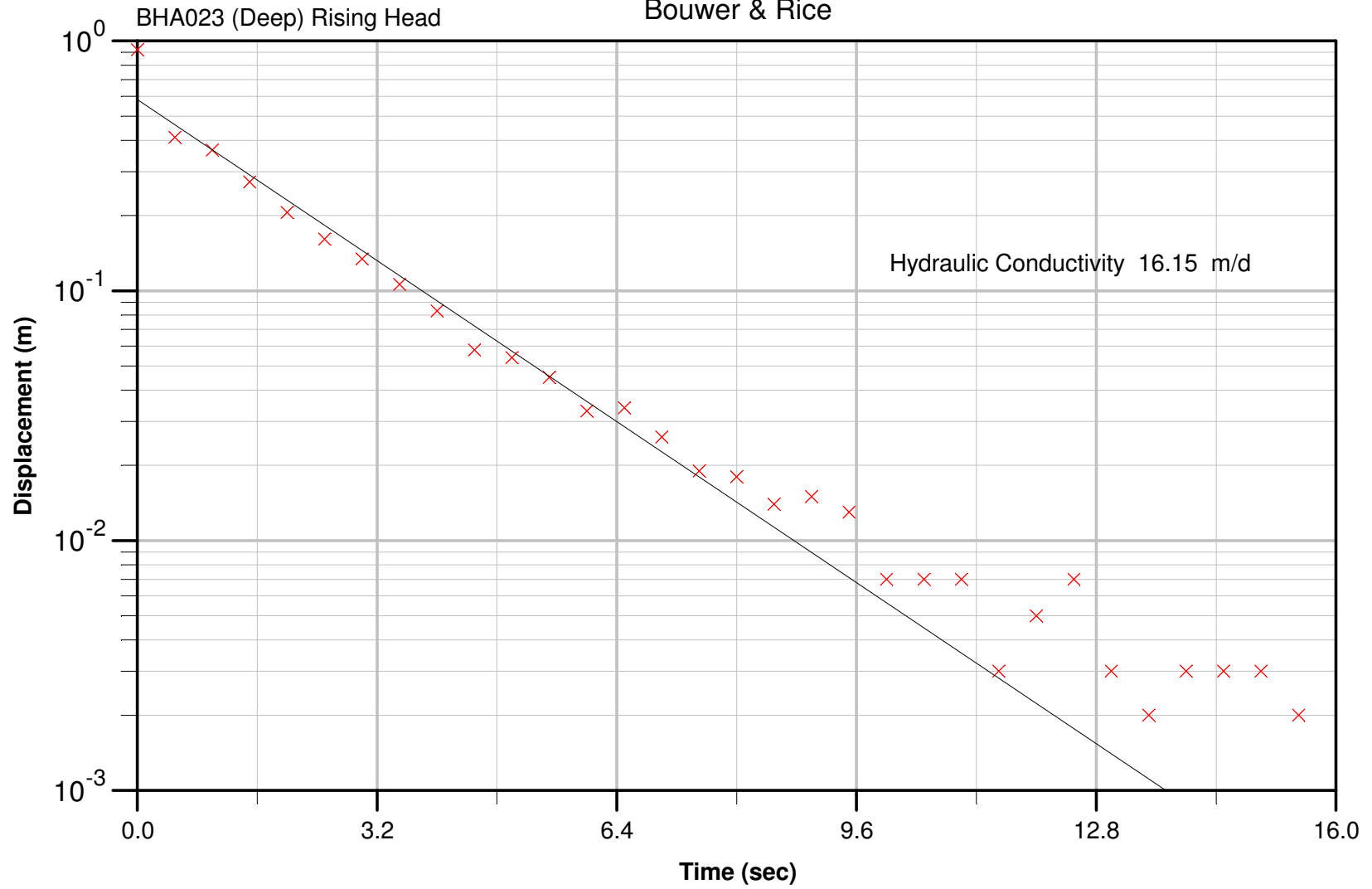
BHA023 (Deep) Falling Head

Bouwer & Rice



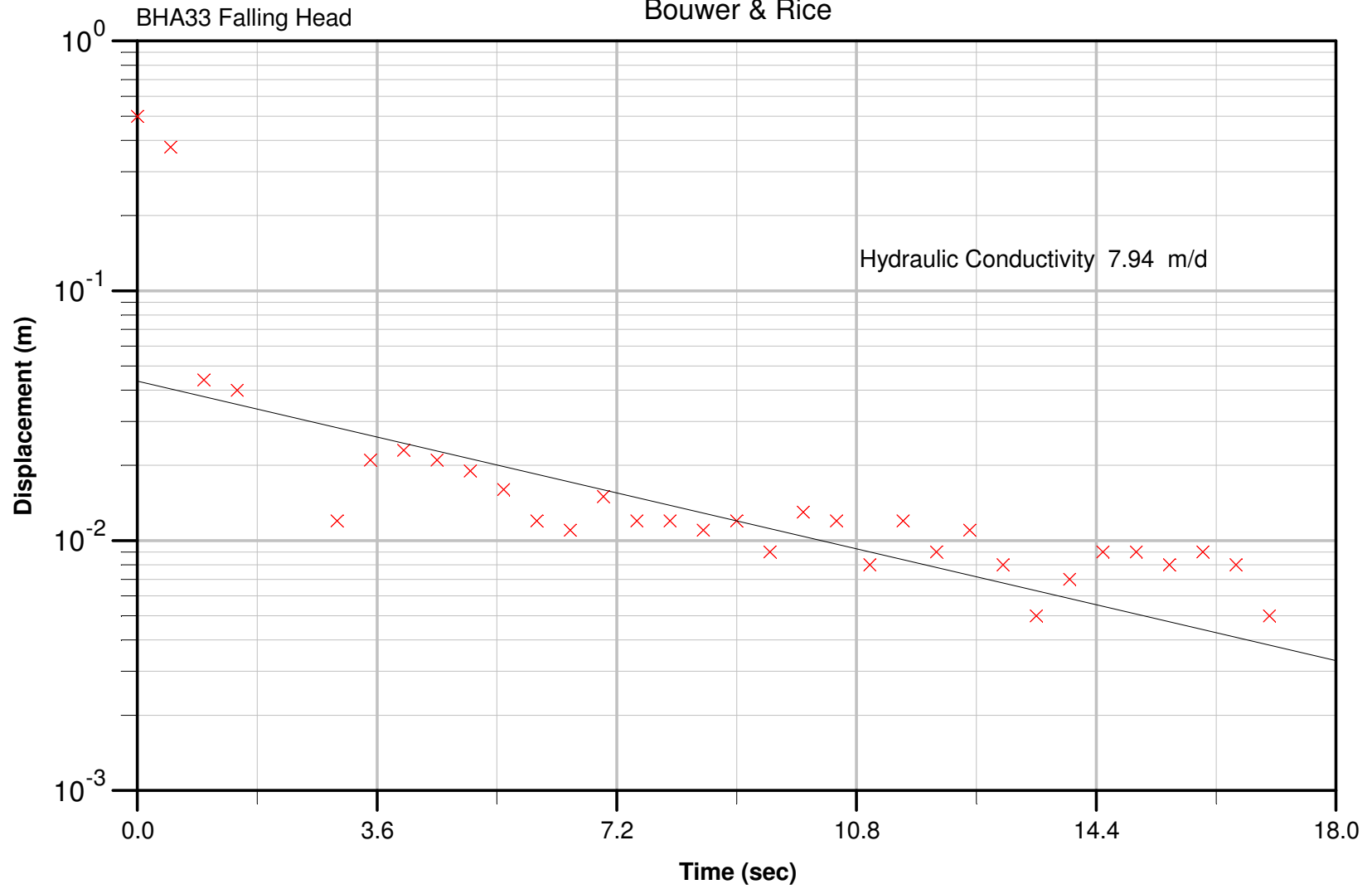
Northstowe New Town

Bouwer & Rice



Northstowe New Town

Bouwer & Rice



Northstowe New Town

Bouwer & Rice

