

LANDSCAPE AND OPEN SPACE MOVEMENT AND ACCESSIBILITY

CYCLE AND PEDESTRIAN ORIENTED DESIGN

- Generous, linked areas for walking, including routes to station that are away from vehicular through routes;
- A series of public realm spaces with visual legibility;
- A choice of cycle routes running north-south to the station plus an east-west connecting route;
- Paving choices, pattern and colour used to aid legibility; and
- External visitor parking spaces distributed throughout the development, including a proportion for oversize cycles.

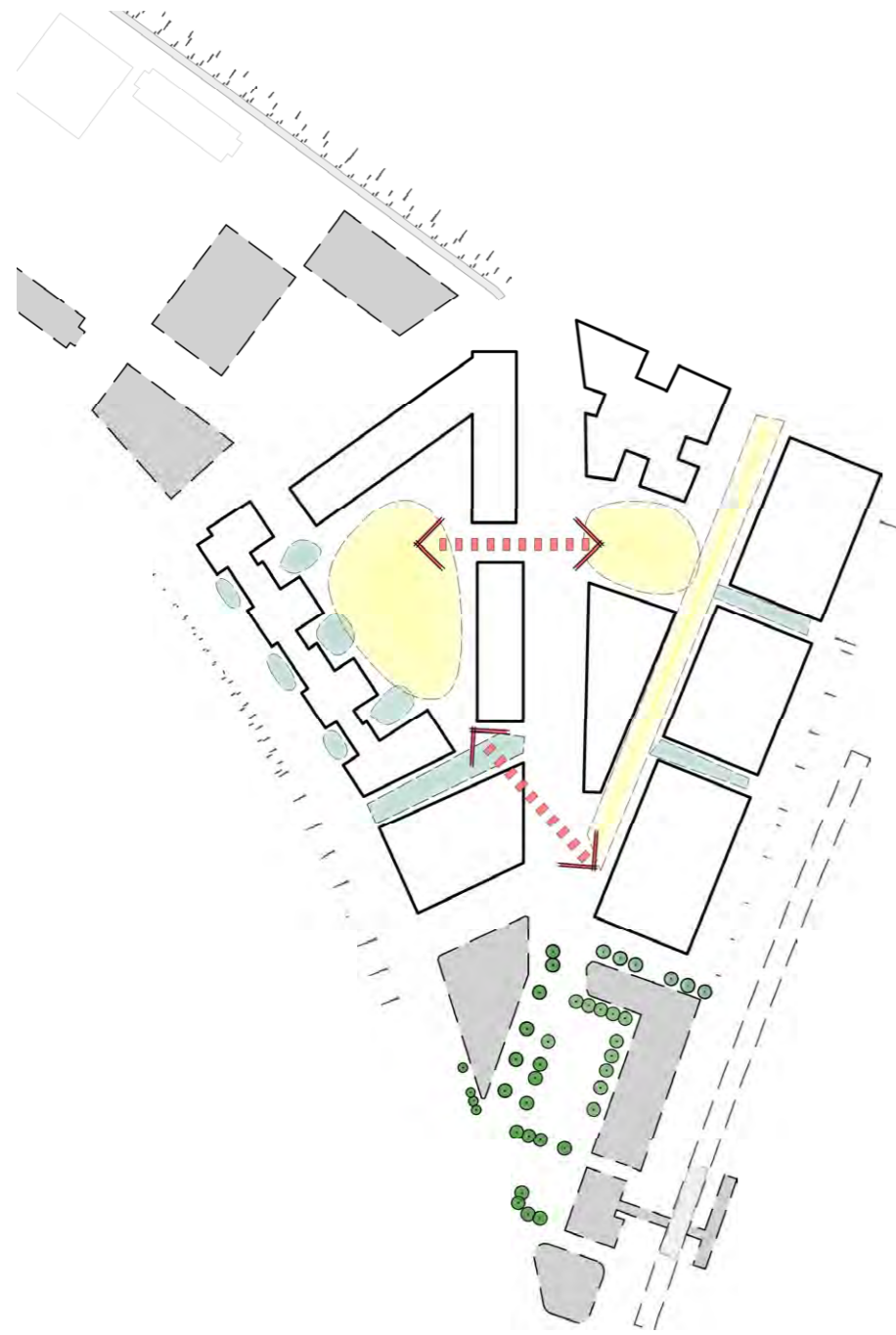


ACCESSIBLE AND INCLUSIVE SPACES

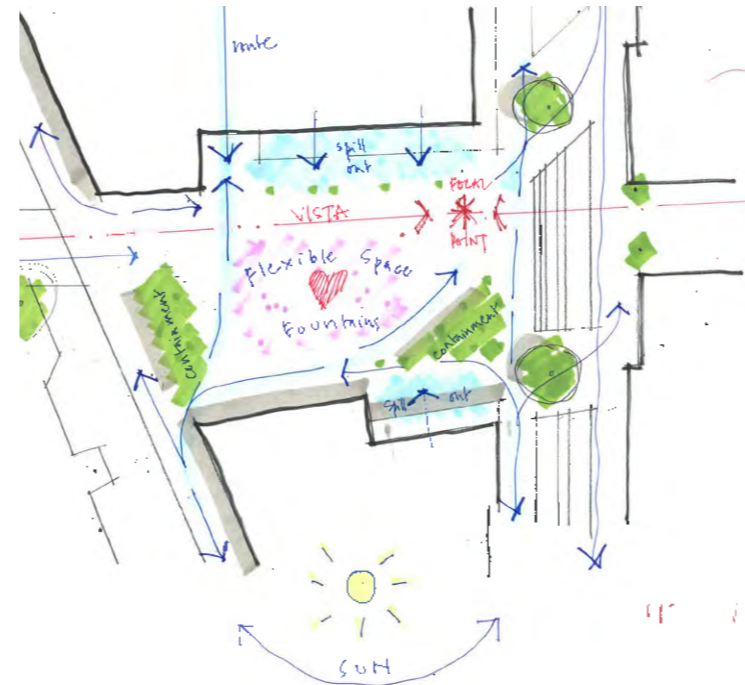
- Seating spaces at regular intervals, including benches with backs and armrests;
- Gaps for wheelchair users to park along linear routes;
- Relatively level across the site, with level entrances to all buildings;
- Tactile paving to provide cues for those with visual impairment;
- Smooth paving surfaces; and
- Blue badge parking in basement and on the street, placed within 50m of building entrances.



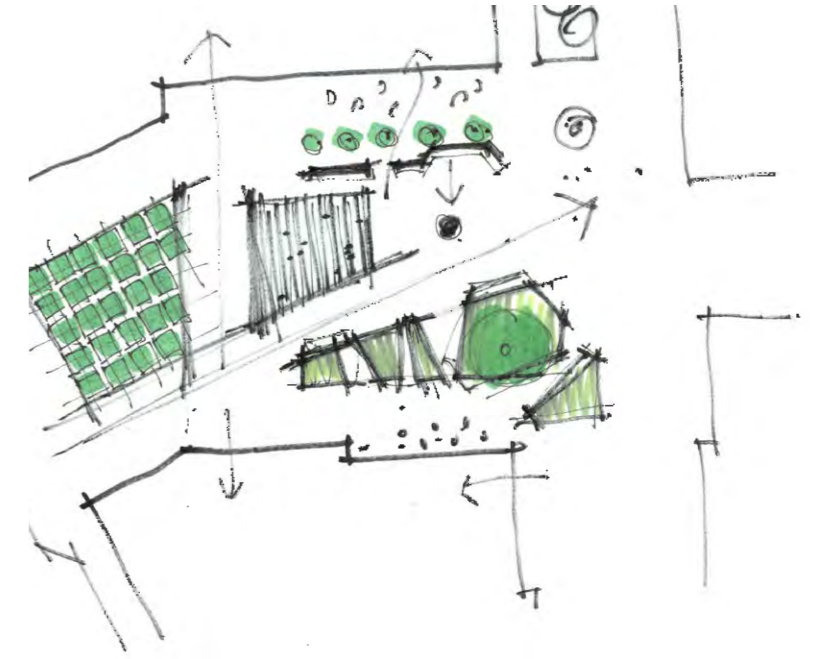
LANDSCAPE AND OPEN SPACE PUBLIC REALM DESIGN DEVELOPMENT



- Key public realm space
- Secondary public space
- Visually linked connection



CHESTERTON SQUARE: SPACE STRATEGIES



CHESTERTON SQUARE: CONCEPT SKETCH



RESIDENTIAL GARDEN MOVEMENT



RESIDENTIAL GARDEN CONCEPT

3. Landscape Masterplan

LANDSCAPE AND OPEN SPACE LANDSCAPE MASTERPLAN

