

MOBILITY HUB SIGNAGE

Clear and intuitive way-finding and signage is to be adopted throughout scheme to ensure legibility of access around building.

A consistent visual identity for signage will be adopted for the Mobility Hub. Clear guidances on signage types/ sizes and fonts will be set forth at an early stage to ensure consistency throughout the entirety of the building.

A consistent colour palette is to be adopted throughout the building to create a distinct identity for the Mobility Hub.

Retail signage guideline to be provided to maintain consistent branding and quality finishing.

Painted signage will extend to floor finishes to highlight pedestrian and vehicular routes to ensure safety.



Clear and intuitive wayfinding signage



Consistent colour palette throughout the building



Floor finish distinction between pedestrian and vehicular routes



Retail signage

MOBILITY HUB EV CHARGING STRATEGY

In line with the sustainability efforts of the Masterplan, the Mobility Hub will feature a robust EV Charging strategy to future proof the building.

Charging points will be installed between the parking bays to enable each bay access to an EV charger.

EV Charging spaces will be clearly identified with distinct signage and icons. Charging stations to be mounted from ceiling to prevent potential collision of vehicles with stations and allow for all cable work to be housed within the ceiling.



Ceiling mounted EV charging points



Clearly demarcated & signed parking spaces for EV charging



MOBILITY HUB VENTILATION STRATEGY

To ensure the basement is naturally vented, ventilation grilles open to the exterior has been carefully factored into the design.

The grills are located on the North, South and Eastern edges of the building, allowing the lower eastern deck of the carpark to be fully naturally vented.

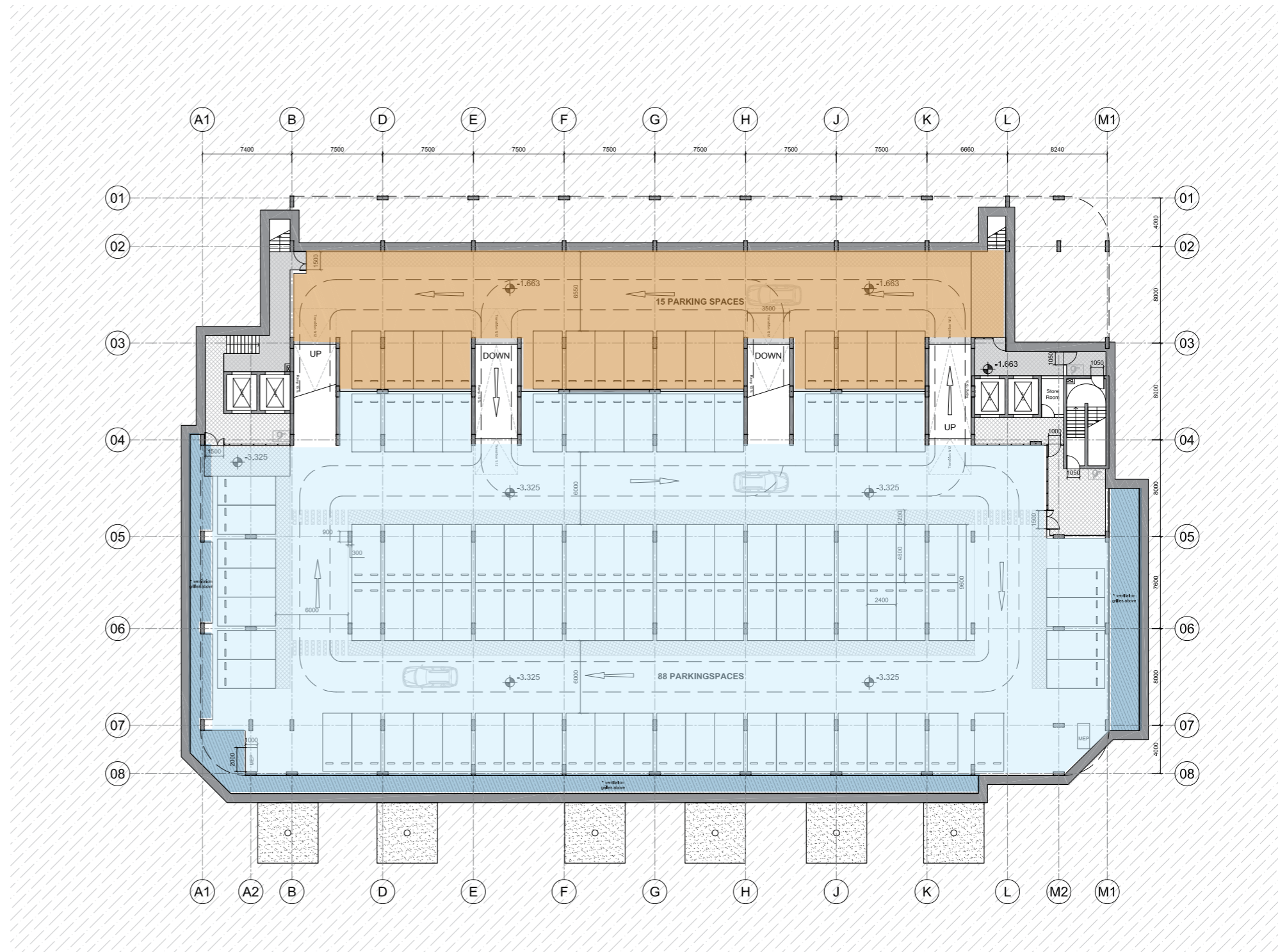
Given the Western deck is situated along station row however, ventilation grilles were not added along this edge, so as not to impact the pedestrian experience of station row. Sufficient natural ventilation capacity however has been programmed along the edges mentioned, so the western deck need only be mechanically supported with ventilation with fans.



Basement fans



Ventilation grille reference



Legend:

- Mechanically vented area with fans
- Naturally vented area
- Ventilation grilles to exterior



MOBILITY HUB

MATURE TREE PLANTING STRATEGY

To soften the eastern edge of the mobility hub in the longer distance views, a mature tree planting strategy was adopted to ensure adequate spatial provision to allow for trees to grow in front of the carpark.

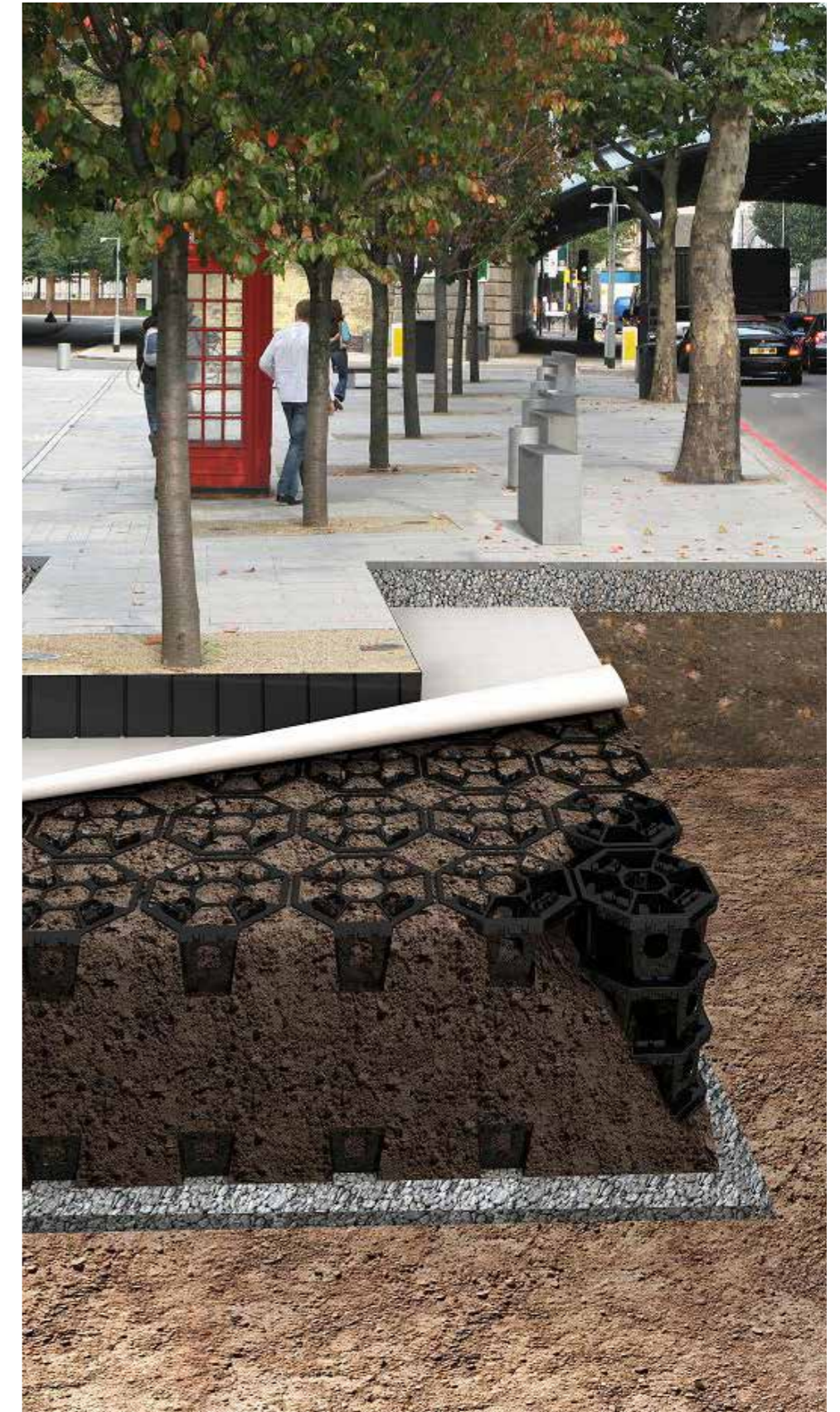
4mx4m root-cells have been accommodated underneath some of the road and paving along Cowley Road to ensure roots have ample room to grow and will be protected from any potential compression from live loads above it.



Pedestrian experience along Cowley Road



View of Mobility Hub from east of tracks



Root cells under paving

ILLUSTRATIVE AERIAL VIEW



Aerial view illustrating the proposed Masterplan