

# Hotel Felix

## Landscape Proposals

### The Drive & Arrival Courtyard

The Arrival Courtyard and the Drive heighten the sense of arrival to the site while defining and framing the architectural proposals. The drive meanders from the site threshold towards the main entrance, trees punctuate this route and frame vistas. Stonework salvaged from the existing building on site is re-purposed to form driveway markers.

The main entrance is visually denoted in the paving through use of large unit natural stone paviors with sett detailing. This space is framed by specimen tree planting creating a clear focal point and hierarchy. Wisteria is proposed to be trained up the facade softening the building and strengthening its connection to the landscape.

Sustainable transport is promoted through inclusion of a cycle store supplemented by improved pedestrian links. Car parking is sensitively integrated into the landscape setting through careful screening with hedge and tree planting.

#### Key Components

1. Drive with stone edge markers
2. Arrival threshold & feature planting
3. Existing & proposed trees creating avenue
4. Hedge planting
5. Refuse store
6. Wildflower meadow
7. Threshold paving
8. Existing semi mature feature tree relocated
9. Additional tree planting
10. Existing hedge retained
11. Cycle store
12. Existing feature trees given emphasis
13. Improved woodland understory planting
14. Secure gated access

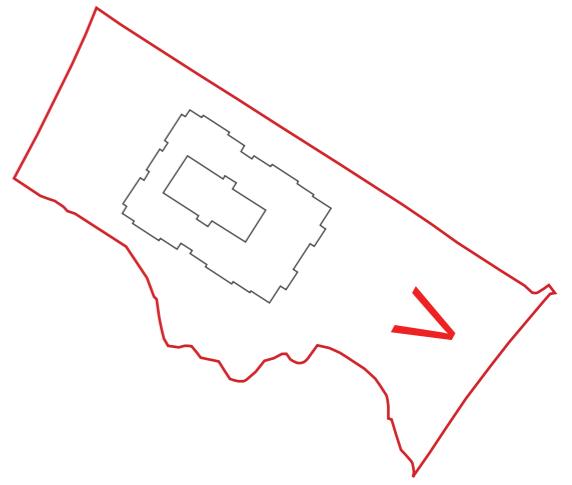




Existing feature tree given more emphasis

Main entrance framed by specimen tree planting

- Existing trees integrated into proposals
- Hedge screening parking courtyard
- Wildflower meadow
- Salvaged natural stone architectural features



Sketch view looking west down the drive towards the main entrance.



Character images of the Drive and Arrival Courtyard

# Hotel Felix

## Landscape Proposals

### Central Courtyard, Terraces & Sensory Garden

The central Courtyard lies at the heart of the masterplan and is an important space both aesthetically and functionally. The proposals are designed to a formal layout and seek to provide a visual focus to the scheme, viewed from both the ground and upper level of the building. A strong connection has been made to the architecture and interior spaces. Terraces situated under Oak pergolas frame the space and are positioned adjacent to the Great Room giving residents the opportunity to spill onto the terrace for informal seating opportunities.

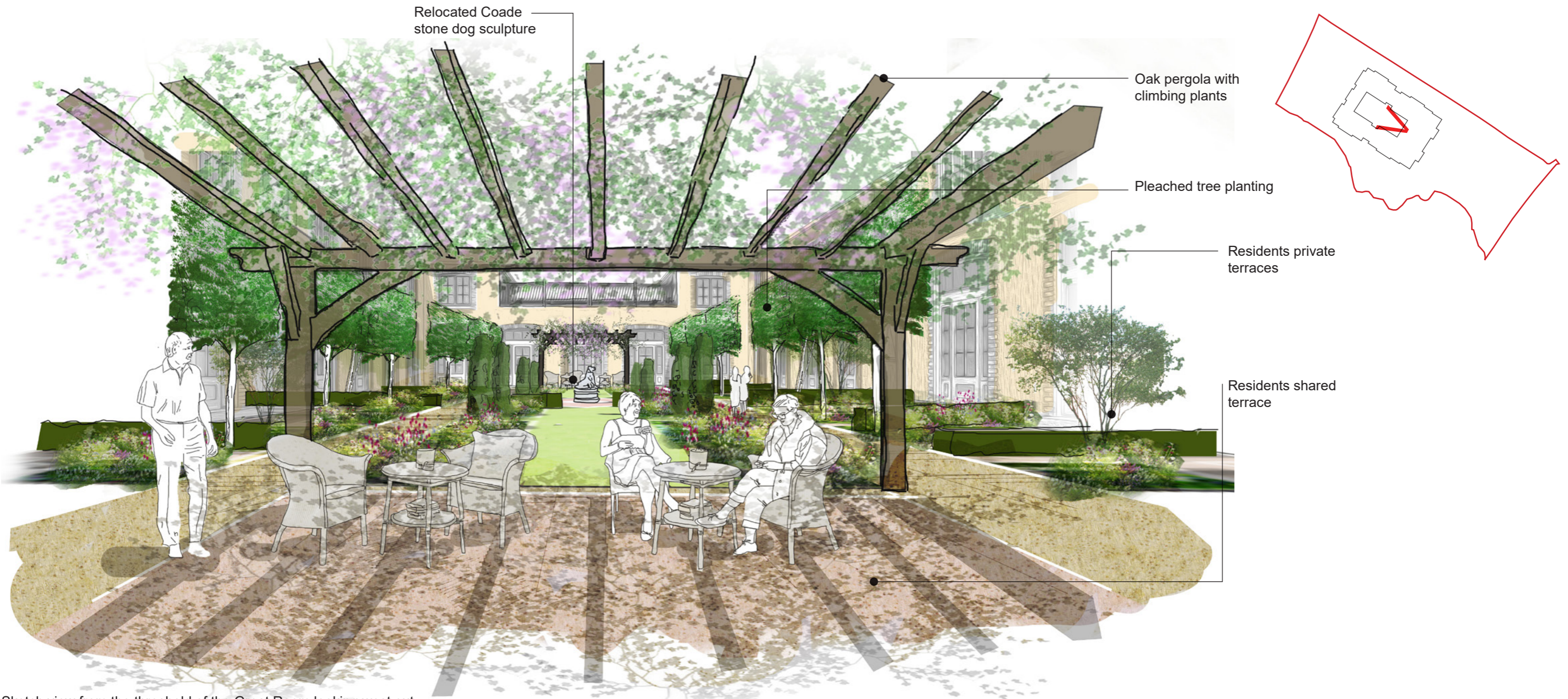
Residents private terraces line the sides of the space buffered by pleached tree planting and lush herbaceous borders. The centre of the courtyard is proposed to be a formal lawn responding to the geometry of the building. The Coade Stone dog sculpture which was salvaged from the existing site is positioned as a centrepiece creating a befitting focal point to celebrate the sites heritage.

The Sensory Garden to the south of the site is designed to have a focus on herb and physic planting. This space is proposed to primarily be used by residents with dementia and will provide opportunities to engage with the planting. A small Oak pergola alongside timber seating provides the chance for rest within the space. A low picket fence buffered by hedge planting will ensure the area is secure.

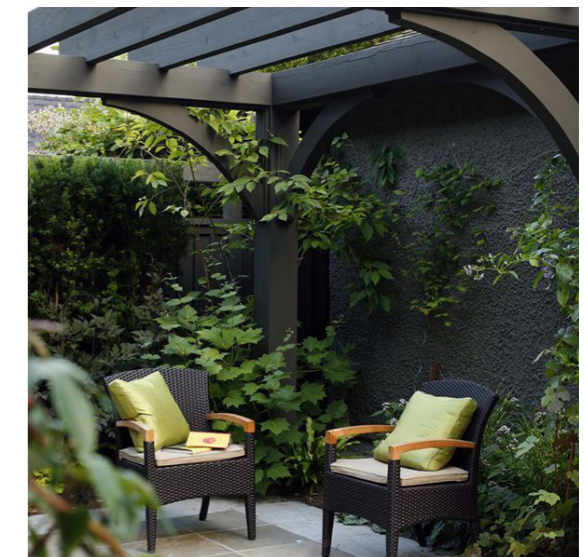
#### Key Components

1. Oak Pergola
2. Herbaceous planting
3. Hedge & low fence boundary
4. Residents private terrace & planting bed
5. Residents shared seating terrace
6. First floor seating terrace
7. Reclaimed dog sculpture
8. Pergola & seating terrace
9. Feature tree planting
10. Pleached tree planting
11. Lawn & herbaceous borders
12. Existing semi mature feature tree relocated
13. Additional tree planting
14. Existing feature trees given emphasis
15. Improved woodland understory planting
16. Secure gated access





Sketch view from the threshold of the Great Room looking west out onto the central courtyard



Character images of the central courtyard

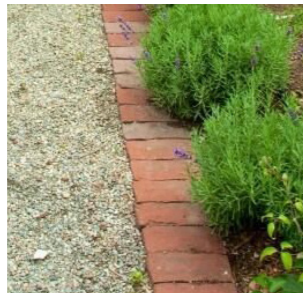
# Hotel Felix

## Landscape Proposals

### Typical Resident's Private Terrace

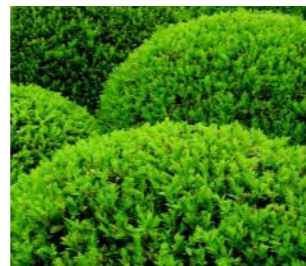
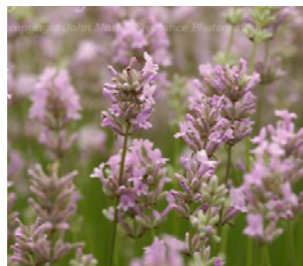
Resident's terraces offer private amenity spaces adjacent to ground floor rooms and have direct access. A generous patio is proposed buffered by lush herbaceous planting. Terraces are proposed to be high quality natural stone with setting detailing. A brick threshold indicates that transition between public and private space while reinforcing the garden character.

#### Surface finishes

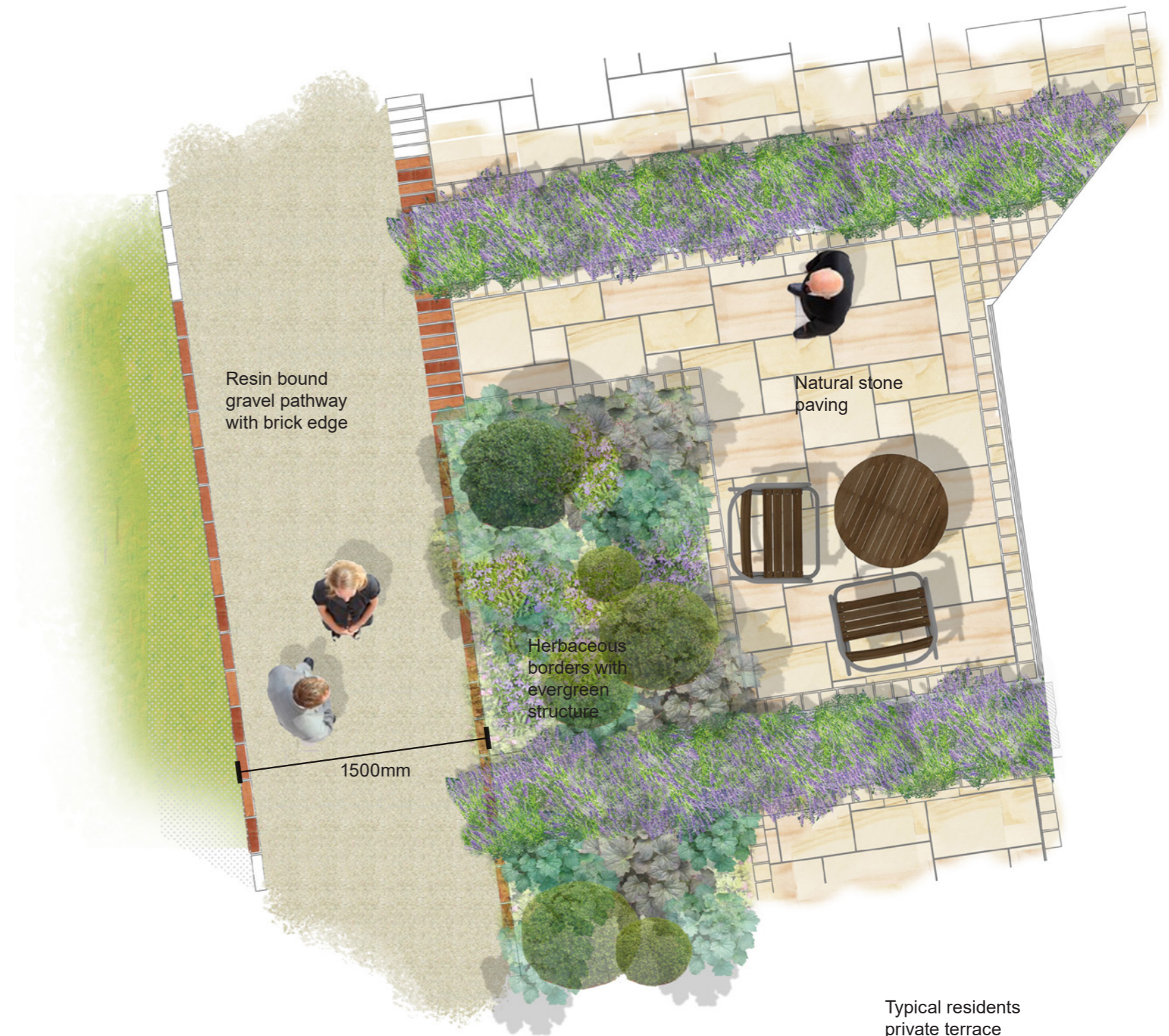
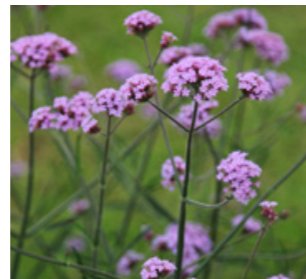
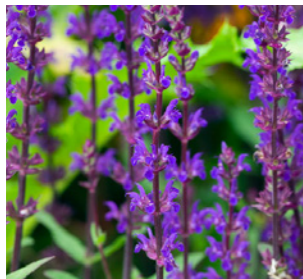


#### Soft palette

##### Evergreen structure



##### Herbaceous mix



Typical residents private terrace

# Hotel Felix

## Illustrative axonometric view

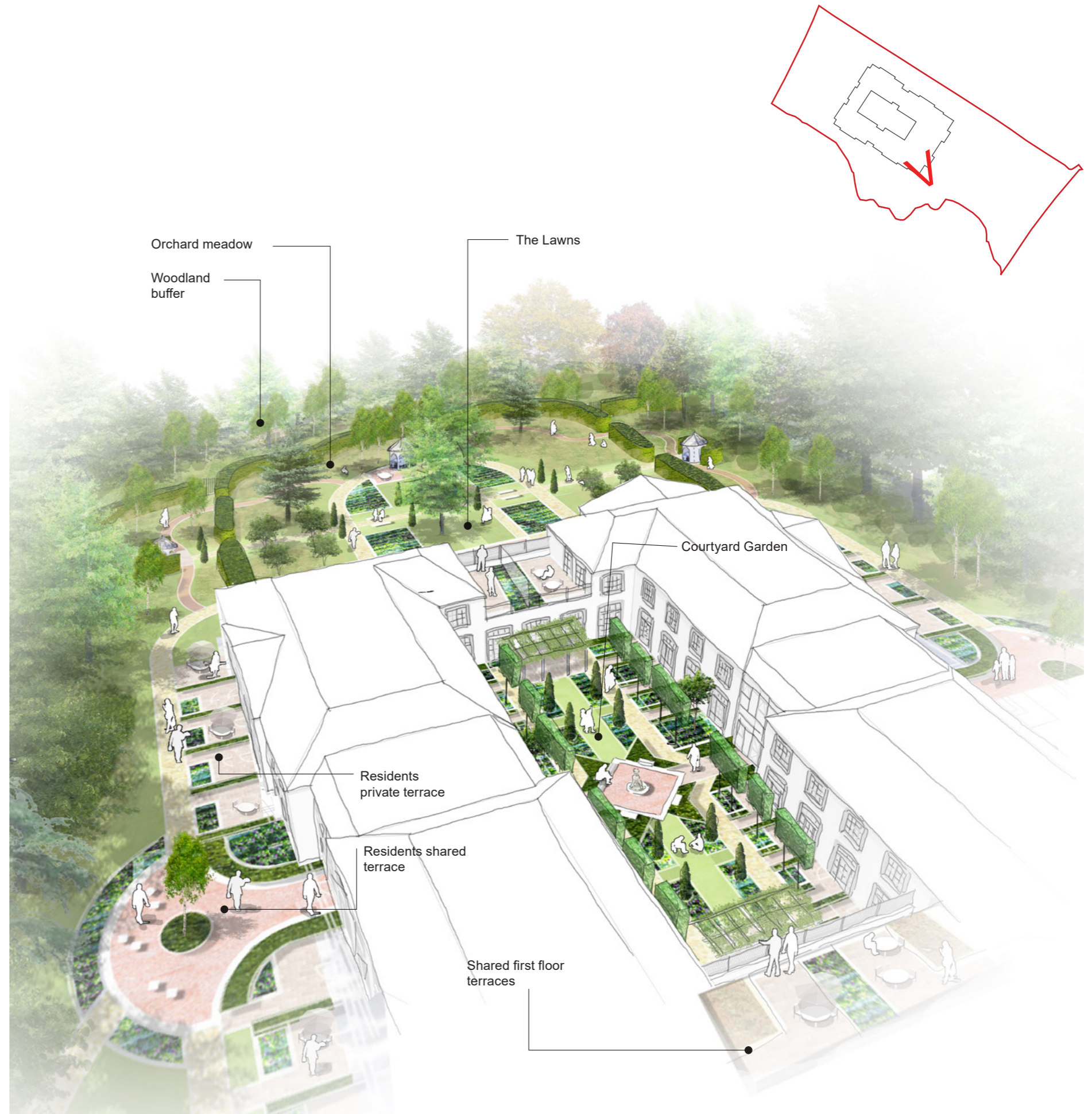
### A sensory experience for residents

The rationale is to create a garden for residents to be immersed in a space that reaches all their senses. In line with our body mind and soul, we will use our dementia sensory gardens to improve residents' physical, emotional, mood, and cognition.

For KYN our sensory garden is a space which has been designed to stimulate all the senses and we will engage the residents' feelings of sight, smell, touch, taste, and sound. We want KYN residents to sit in their garden and become immersed in all the surroundings. Touching every sense, residents can listen to all the sounds of nature; the bees are buzzing, the birds singing, the sounds of the wind rustling through plants, and soft wind chime perhaps, whilst engaging is conversation and activity in the garden.

To do this we will ensure the sensory gardens enables residents to:

- Touch and feel the petals, smelling the flowers and listening to the bees and birds singing, creating an immersive space where there is direct engagement with the senses.
- Have lots of time outdoors, breathing fresh air
- Being exposed to sunlight/ (UVB rays) which is incredibly beneficial to the residents' overall physical and cognitive health
- Undertake life-enriching activities in the garden
- Collect flowers from the garden and use them in pressed flower art as part of our life-enriching activities
- Grow their own flowers/ herbs/ vegetables
- Undertake activities including planting and weeding, with pots and beds that are off the ground for residents who have poor dexterity and mobility
- Relax in a peaceful space
- Undertake Reminiscence sessions, with the topics around plants and flowers, recalling favourite plants and the stories associate with gardening and flowers, for example



Axonometric view looking North West

# Hotel Felix

## Landscape Proposals

### The Lawns & Orchard Meadow

The Lawns & Orchard meadow situated to the west of the site form the primary residents garden. They are laid out in an English Country Garden style which complements the architecture. A green backdrop to the area is provided by the landscape buffer planting on the boundary while the space is contained by a 1.8m high Yew hedge the majority of which is retained from the existing site.

Pathways form circular routes and provide residents the opportunity to meander through the various spaces while allowing for access to further amenity. Selected existing trees in the centre of the site are proposed to be relocated maximising the spaces amenity value and avoiding future overshadowing. The remaining trees are integrated into the design and become focal points, strengthening the areas character.

Terraces offer the opportunity for rest and seating. These are designed to be flexible to accommodate events and gatherings. The existing timber Gazebo previously used as a feature in many weddings is proposed to be relocated into the centre of the space positioned in front of a row of Birch trees.

The central vistas that connect strongly to the building are offset by a north - south vista between two greenhouses. These offer residents the chance for additional growing opportunities further to those within the raised planting beds within herbaceous borders.

A central formal lawn transitions to more informal meadow to the edges of the space. Within the meadow small orchard tree planting is proposed bringing further amenity & biodiversity value.

#### Key Components

1. Relocated Gazebo
2. Herbaceous planting with raised beds
3. Evergreen boundary hedge
4. Residents private terrace & planting bed
5. Residents shared seating terrace
6. First floor seating terrace
7. Greenhouse
8. Orchard tree planting & meadow
9. Feature tree planting
10. Bench seating
11. Lawn
12. Feature shrub planting
13. Additional tree planting
14. Existing feature trees given emphasis
15. Improved woodland understory planting
16. Secure gated access
17. Resin bound gravel pathway
18. Rubberised mulch pathway
19. Storage shed

