



HOTEL FELIX

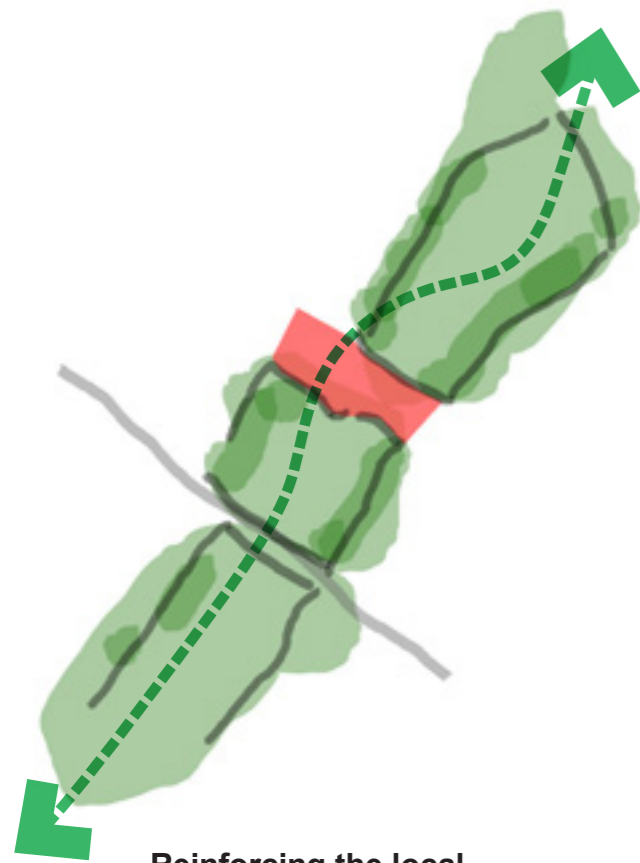


Hotel Felix

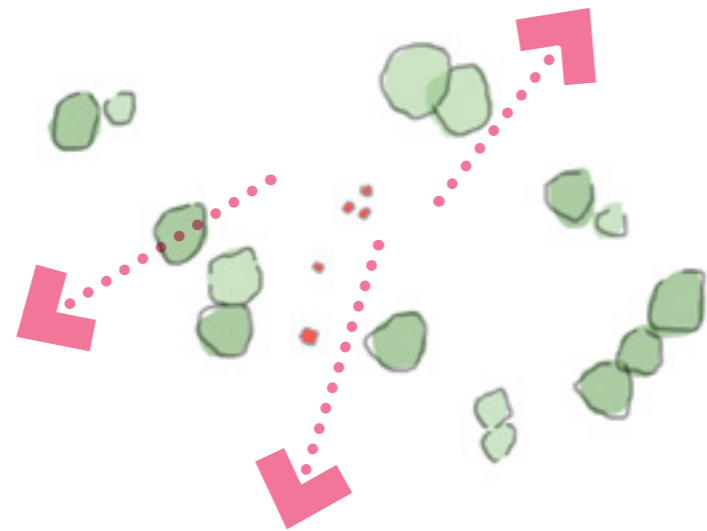
Landscape Design Principles

The approach to the landscape design is responsive to the site's sensitive location within the local context and the green belt. Situated in a key position within the wider green network, the proposals will reinforce this local green infrastructure through retention of existing green assets, supplementing these with further tree and herbaceous planting.

The proposals will celebrate the site's heritage giving more emphasis to key feature trees and heightening the sense of place. Aspects of the stonework from the current building will be salvaged and incorporated into the landscape. Prominent features such as the Coades stone dog and the pagoda shall also be repositioned and made into focal points within the proposals.



Reinforcing the local green network



Celebrating the sites features & heritage



Providing safe, accessible spaces that offer amenity to residents



Adopt a layered approach offering various landscape characters

Hotel Felix

Landscape Opportunities & Constraints



Sense of arrival

- Improve entrances & thresholds through materiality change
- Currently spaces are poorly defined
- Buffer planting on the edges has gaps and appears unmanaged

Existing boundaries

- Localised planting to infill gaps
- Tree works & proposals in agreement with neighbouring properties.
- Replacement of selected boundaries within the buffer planting to create secure fence line.

Celebrating the sites heritage

- The existing trees have the potential to form striking features within the landscape and are a valuable asset
- The root protection areas form a constraint within the design and hand digging may be required
- Retain & incorporate existing features to enhance identity and celebrate the site's heritage.

Strengthening the sense of place

- Creation of vistas to trees as key focal points
- Consideration of overhangs & planted areas
- Consideration to the view out from apartments and creation of a seamless transition from the interior to the exterior.

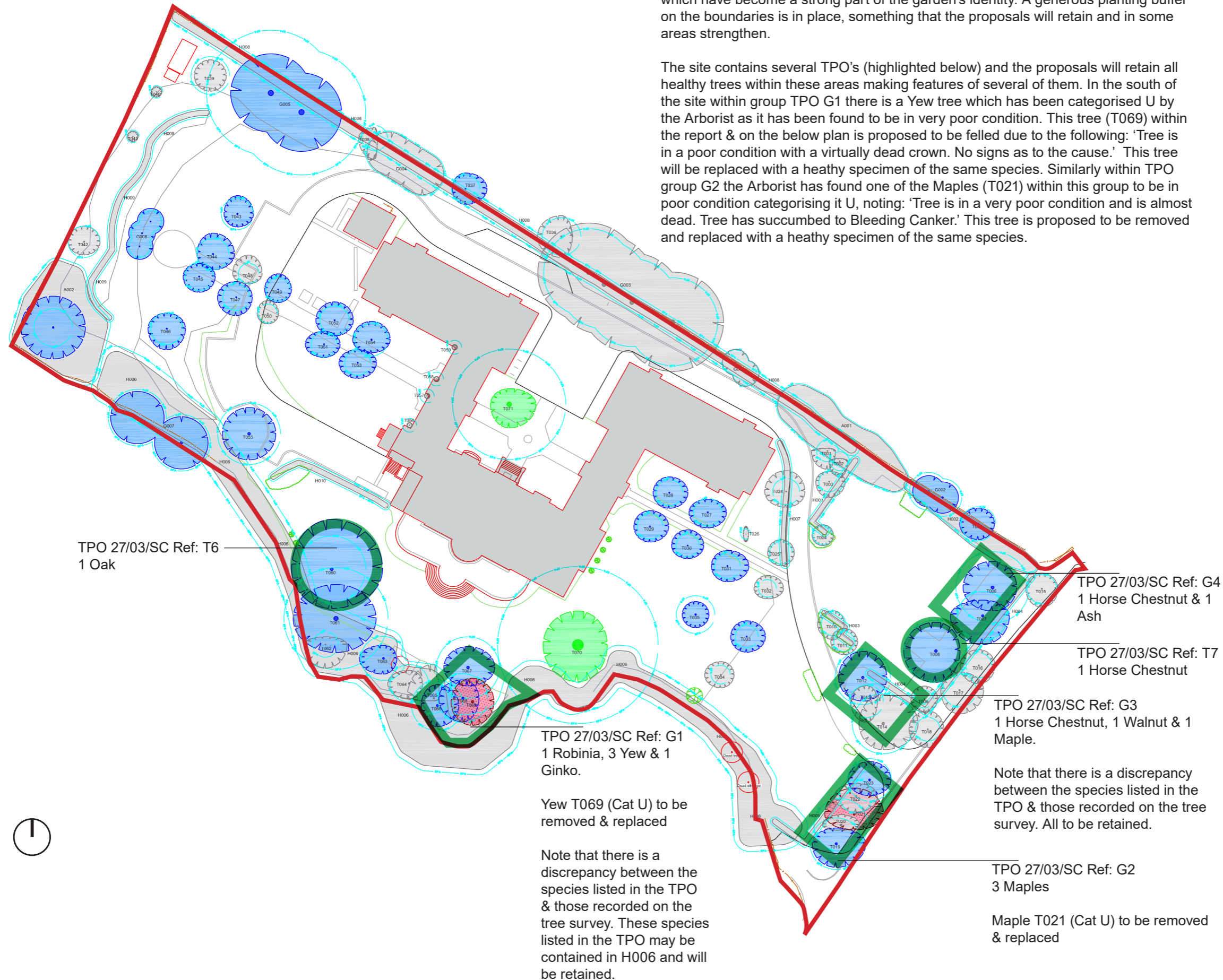
Hotel Felix

Landscape

Existing Trees & TPO's

The site benefits from a wide variety of trees including impressive mature specimens which have become a strong part of the garden's identity. A generous planting buffer on the boundaries is in place, something that the proposals will retain and in some areas strengthen.

The site contains several TPO's (highlighted below) and the proposals will retain all healthy trees within these areas making features of several of them. In the south of the site within group TPO G1 there is a Yew tree which has been categorised U by the Arborist as it has been found to be in very poor condition. This tree (T069) within the report & on the below plan is proposed to be felled due to the following: 'Tree is in a poor condition with a virtually dead crown. No signs as to the cause.' This tree will be replaced with a healthy specimen of the same species. Similarly within TPO group G2 the Arborist has found one of the Maples (T021) within this group to be in poor condition categorising it U, noting: 'Tree is in a very poor condition and is almost dead. Tree has succumbed to Bleeding Canker.' This tree is proposed to be removed and replaced with a healthy specimen of the same species.



TPO 27/03/SC Ref: T6
1 Oak

TPO 27/03/SC Ref: G4
1 Horse Chestnut & 1 Ash

TPO 27/03/SC Ref: T7
1 Horse Chestnut

TPO 27/03/SC Ref: G3
1 Horse Chestnut, 1 Walnut & 1 Maple.

Note that there is a discrepancy between the species listed in the TPO & those recorded on the tree survey. All to be retained.

TPO 27/03/SC Ref: G2
3 Maples

Maple T021 (Cat U) to be removed & replaced

TPO 27/03/SC Ref: G1
1 Robinia, 3 Yew & 1 Ginko.

Yew T069 (Cat U) to be removed & replaced

Note that there is a discrepancy between the species listed in the TPO & those recorded on the tree survey. These species listed in the TPO may be contained in H006 and will be retained.

CATEGORY AND DEFINITION			
Trees unsuitable for retention			
Category U	Those in such condition that they cannot realistically be retained as living trees in the current land use for longer than 10 years		
Trees to be considered for retention			
Category A	Trees of high quality with an estimated remaining life expectancy of at least 40 years		
Category B	Trees of moderate quality with an estimated remaining life expectancy of at least 20 years		
Category C	Trees of low quality with an estimated remaining life expectancy of at least 10 years, or young trees with a stem diameter below 150mm		
NOTE:			
Hayden's Arboricultural Consultants were provided with a Topographical Survey but these do not always show the positions of all the trees/features on site. The locations of any additional features have been fixed using GPS. As such the position of the trees/landscape features should not be taken as exact but gives a fair distribution of their locations on site.			
CP NOTE:			
This document details the constraints created by the trees on the site and should be used as a design tool to inform the layout of the proposed development. This document is not sufficient for planning submission purposes.			
LEGEND			
	Existing Tree/Feature BS 5837:2012 Category A		
	Existing Tree/Feature BS 5837:2012 Category B		
	Existing Tree/Feature BS 5837:2012 Category C		
	Line of Root Protection Area (RPA) - calculated following guidelines set in BS 5837:2012		
	Existing Tree/Feature to be Removed BS 5837:2012 Category U		
	Additional feature which doesn't meet BS 5837:2012 categorisation but is included for reference		
- 23/04/20 JF Based on Greenhatch group drg no. 36289 Rev 0			
Rev:	Date:	By:	Revision:
The position, condition, and dimensions of the trees are based on a site survey undertaken on 15/04/20			
"The original of this drawing was produced in colour - a monochrome copy should not be relied upon"			
Scale 1:500			
0m 10m 20m 30m 40m			
© HAYDEN'S 2020			
5 Moseleys Farm Business Centre Fornham All Saints, Bury St Edmunds Suffolk IP28 6JY			
			Head Office: 01284 765391 Southern Office: 01722 657423 Email: info@treesurveys.co.uk
www.treesurveys.co.uk			
Client:	Cassel Hotels (Cambridge) Limited		Drawing Title: Constraints Plan
Site: Hotel Felix, Whitehouse Lane, Huntingdon Road, Girton, CB3 0LX			
Date:	23/04/20	Drawn By:	JF
Scale:	1:500 (A2)	Checked By:	SHO
		Drawn No.:	8100-D-CP
		Rev.:	-

Hotel Felix

Landscape

Existing Trees, Proposed Retention, Relocation & Removal.

The proposals have been shaped to maximise tree retention on site as well as further opportunities for amenity. The existing trees form the framework for establishing the landscape proposals which in turn respect and reinforce their importance within their setting. The vast majority of trees on site are proposed to be retained in particular those on boundaries to maintain the green buffer to the sites edge.

Through the tree survey the Arborist has identified two trees that are proposed to be removed due to poor health categorising them both U in line with BS 5837. The remaining 11 proposed to be removed are to facilitate the development and to create better amenity and planting opportunities within the garden spaces. All trees proposed to be removed will be replaced with better specimens as part of the planting scheme.

To minimise the loss of trees and to further amenity within the garden 10 semi mature trees are proposed to be relocated (using a tree spade). Proposals move these trees to nearer the edges of the site strengthening the green buffer planting. If left in place these semi mature trees would risk future damage to the building and also limit the use of the garden spaces which they would dominate in full maturity.

Hedges and understory planting have been retained where possible. These largely un-managed areas will be selectively thinned and actively managed going forward to encourage natural succession and to better the health of the trees.

Please read this information in conjunction with the tree planting proposals outlined later in this report. For further detailed information please refer to the Arborist's report.



Hotel Felix

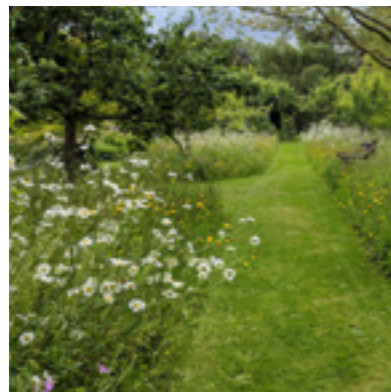
Landscape Proposals Character Areas

Approach

The landscape concept is to create a clear transition in character from the building interface to the site edge. An approach inspired by a house set in a garden with parkland beyond.

Herbaceous borders and allotment opportunities are proposed to have a formal character reflecting the architectural style. These areas are adjacent to private terraces for ease of access and to maximise aesthetic value from the interior. They transition to lawn space which merges into more informal woodland understorey. The fringe of the site is proposed to have a wilder character and form a green back drop to buffer neighbouring properties.

Pocket spaces and moments occur throughout with a rationalised clear route hierarchy which maximises greenspace and frames existing trees.



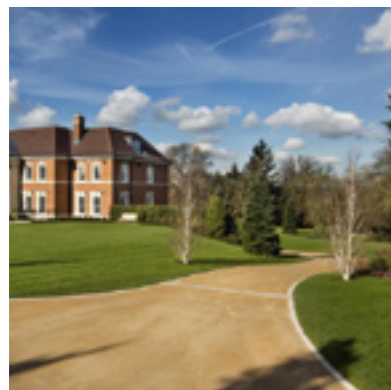
Meadow & Orchard



Sensory Garden



The Lawns



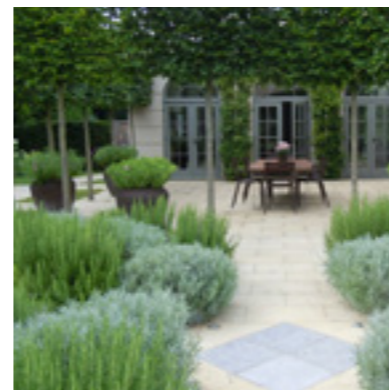
The Drive & Arrival Courtyard



Woodland buffer



Terraces

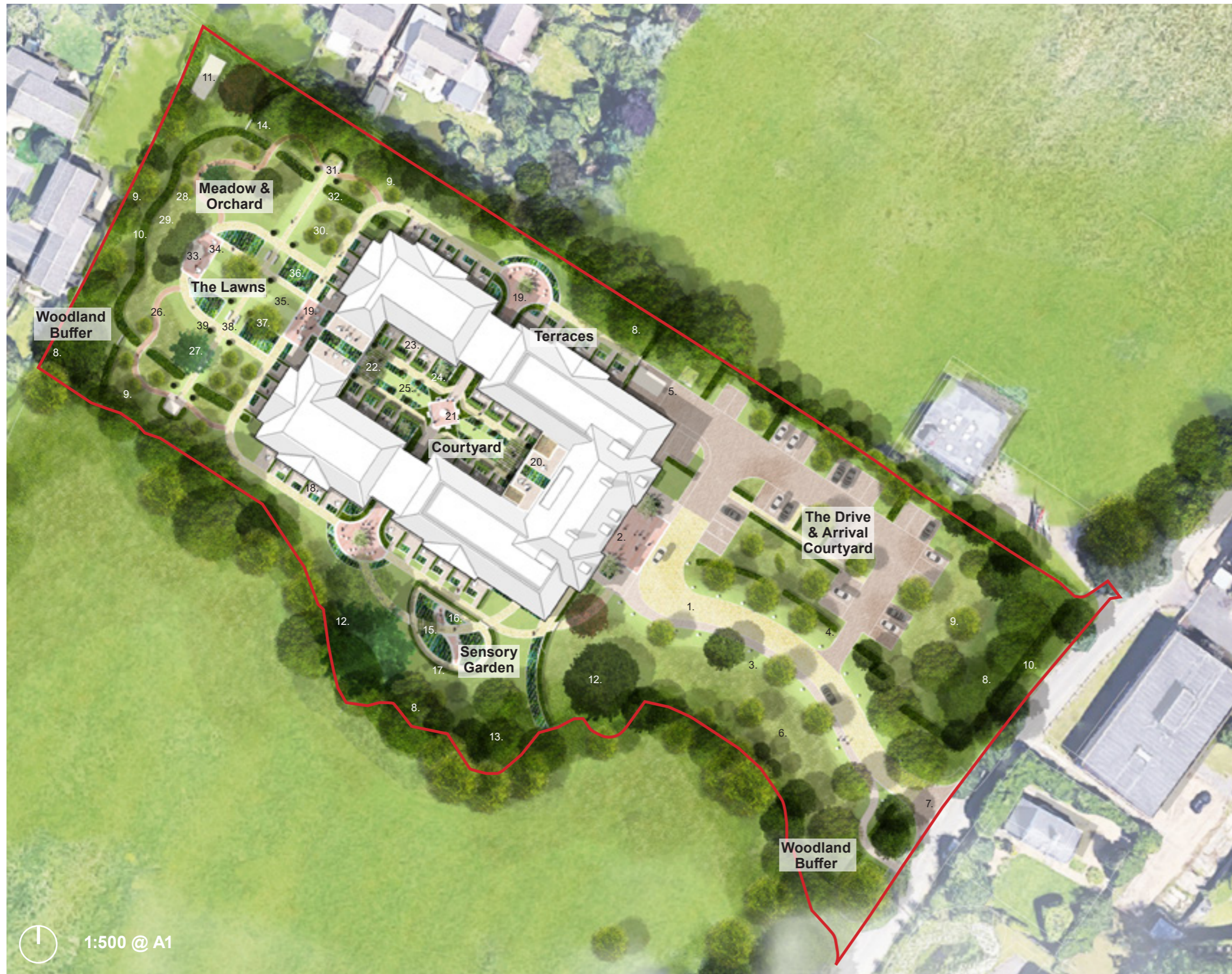


Courtyard

Diagrammatic plan showing the various landscape characters.

Hotel Felix

Landscape Masterplan



Key Components

The Drive & Arrival Courtyard

1. Drive with stone edge markers
2. Arrival threshold & feature planting
3. Existing & proposed trees creating avenue
4. Hedge planting
5. Refuse & bike store
6. Grassland meadow
7. Threshold paving

Woodland buffer

8. Existing trees retained
9. Additional tree planting
10. Existing hedge retained
11. Storage shed
12. Existing feature trees given emphasis
13. Improved woodland understory planting
14. Secure gated access

Sensory Garden

15. Pergola
16. Herbaceous planting
17. Hedge & low fence boundary

Terraces

18. Residents private terrace & planting bed
19. Residents shared seating terrace
20. First floor seating terrace

Courtyard

21. Reclaimed dog sculpture
22. Pergola & seating terrace
23. Residents private terraces
24. Pleached tree planting
25. Lawn & herbaceous borders

Meadow & Orchard

26. Meadow walk
27. Existing tree retained
28. Additional tree planting
29. Meadow grassland
30. Orchard tree planting
31. Residents greenhouse / seating
32. Proposed hedge planting

The Lawns

33. Relocated existing Gazebo
34. Seating terrace
35. Lawn
36. Herbaceous borders
37. Existing tree retained
38. Pocket seating spaces
39. Formal planting

1:500 @ A1

Landscape masterplan.

Hotel Felix

Establishing the KYN Palette

Kyn aspires to set an exemplary standard in both the care it provides to its residents and for the environment that this care is given. This is reflected in the proposed high quality nature of the material and planting palette.

Hard palette

Arrival courtyard



Coloured tarmac & granite edge detailing / thresholds

Garden Pathways



Buff resin bound gravel with brick or timber edge

Terraces



Scoutmoor Yorkstone Paving with sawn finish

Edges



Feature brick edge detailing to pathways & terraces

Soft palette

Arrival courtyard



Low hedges and meadow grassland

Private terraces & Garden



Herbaceous borders with evergreen structure

Sensory Garden



Planting promoting the senses with wattle edges

Trees



Orchard planting & feature trees

Features

Arrival courtyard



Salvaged stonework as drive edge markers

Garden



Oak furniture features with natural finish & stone focal points

Shared terraces



Clay & terracotta pots on terraces

Internal boundaries



Low timber fences integrated into the landscape buffered with hedge planting

Hotel Felix

Circulation & Use

A clear route hierarchy is proposed that unites the external and internal spaces. Routes are circular in nature and are designed to encompass a broad variety of experiences with heightened sensory features, creating memorable journeys for residents. The primary route (red dash) forms a figure of eight loop which connects the central courtyard to the primary residents garden passing through the glass link sections in the centre of the building. Secondary routes (orange dash) support these and are proposed to be less formal in character. It is envisaged that residents will use these to exercise through promenading as well to gain access to the various spaces around the masterplan.

Spaces within the masterplan offer residents a range of amenity. Private terraces (light blue) which are situated adjacent to rooms offer residents opportunities for rest on private patios as well as for gardening within the herbaceous borders enclosing the space. Punctuating the external spaces adjacent to the building are several shared terraces (pink) offering residents opportunities for social interaction or simply to sit and relax within one of the various landscape settings.

Activities such as growing are supported within the primary residents garden. This occurring within the proposed greenhouses and the herbaceous borders part of which will be raised. The meadow orchard supplements these uses and creates the chance for fruit growing and picking. The sensory garden (purple) aims to primarily serve residents with dementia, consisting of herb and physic planting.

- - - Primary circulation route
- - - Secondary circulation route
- - - Vehicular route
- Arrival space
- Communal gardening opportunities
- Fruit growing / picking
- Communal dwell and rest
- Gardening & sensory experiences
- Private rest & gardening opportunities



Bright coloured planting with various textures within the dementia garden.



Opportunities for activity and amenity through raised planting beds and fruit tree planting.

Diagrammatic plan showing circulation & uses within the masterplan.

Hotel Felix

Landscape Proposals

The Drive & Arrival Courtyard

The Arrival Courtyard and the Drive heighten the sense of arrival to the site while defining and framing the architectural proposals. The drive meanders from the site threshold towards the main entrance, trees punctuate this route and frame vistas. Stonework salvaged from the existing building on site is re-purposed to form driveway markers.

The main entrance is visually denoted in the paving through use of large unit natural stone paviors with sett detailing. This space is framed by specimen tree planting creating a clear focal point and hierarchy. Wisteria is proposed to be trained up the facade softening the building and strengthening its connection to the landscape.

Sustainable transport is promoted through inclusion of a cycle store supplemented by improved pedestrian links. Car parking is sensitively integrated into the landscape setting through careful screening with hedge and tree planting.

Key Components

1. Drive with stone edge markers
2. Arrival threshold & feature planting
3. Existing & proposed trees creating avenue
4. Hedge planting
5. Refuse store
6. Wildflower meadow
7. Threshold paving
8. Existing semi mature feature tree relocated
9. Additional tree planting
10. Existing hedge retained
11. Cycle store
12. Existing feature trees given emphasis
13. Improved woodland understory planting
14. Secure gated access
15. Pedestrian access with no dig construction





Existing feature tree given more emphasis

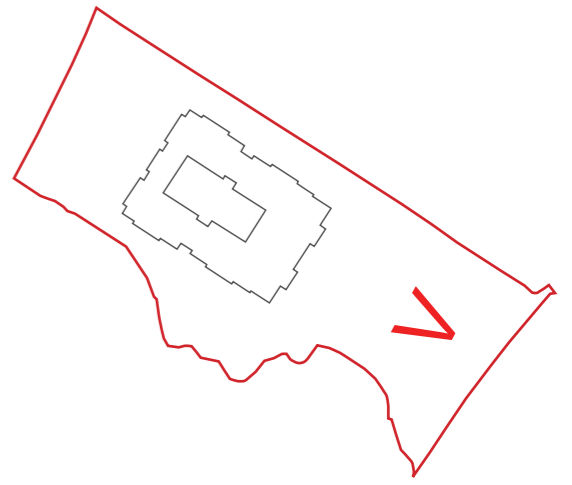
Main entrance framed by specimen tree planting

Existing trees integrated into proposals

Hedge screening parking courtyard

Wildflower meadow

Salvaged natural stone architectural features



Sketch view looking west down the drive towards the main entrance.



Character images of the Drive and Arrival Courtyard

Hotel Felix

Landscape Proposals

Central Courtyard, Terraces & Sensory Garden

The central Courtyard lies at the heart of the masterplan and is an important space both aesthetically and functionally. The proposals are designed to a formal layout and seek to provide a visual focus to the scheme, viewed from both the ground and upper level of the building. A strong connection has been made to the architecture and interior spaces. Terraces situated under Oak pergolas frame the space and are positioned adjacent to the Great Room giving residents the opportunity to spill onto the terrace for informal seating opportunities.

Residents private terraces line the sides of the space buffered by pleached tree planting and lush herbaceous borders. The centre of the courtyard is proposed to be a formal lawn responding to the geometry of the building. The Coade Stone dog sculpture which was salvaged from the existing site is positioned as a centrepiece creating a befitting focal point to celebrate the sites heritage.

The Sensory Garden to the south of the site is designed to have a focus on herb and physic planting. This space is proposed to primarily be used by residents with dementia and will provide opportunities to engage with the planting. A small Oak pergola alongside timber seating provides the chance for rest within the space. A low picket fence buffered by hedge planting will ensure the area is secure.

Key Components

1. Oak Pergola
2. Herbaceous planting
3. Hedge & low fence boundary
4. Residents private terrace & planting bed
5. Residents shared seating terrace
6. First floor seating terrace
7. Reclaimed dog sculpture
8. Pergola & seating terrace
9. Feature tree planting
10. Pleached tree planting
11. Lawn & herbaceous borders
12. Existing semi mature feature tree relocated
13. Additional tree planting
14. Existing feature trees given emphasis
15. Improved woodland understory planting
16. Secure gated access





Sketch view from the threshold of the Great Room looking west out onto the central courtyard



Character images of the central courtyard

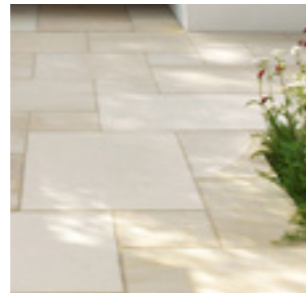
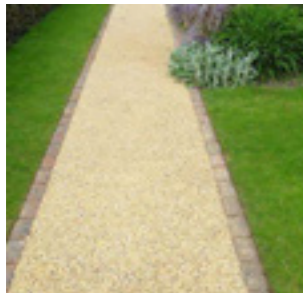
Hotel Felix

Landscape Proposals

Typical Resident's Private Terrace

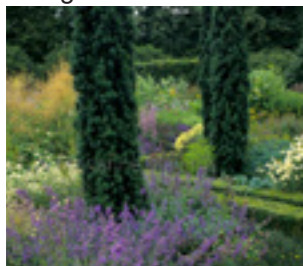
Resident's terraces offer private amenity spaces adjacent to ground floor rooms and have direct access. A generous patio is proposed buffered by lush herbaceous planting. Terraces are proposed to be high quality natural stone with setting detailing. A brick threshold indicates that transition between public and private space while reinforcing the garden character.

Surface finishes

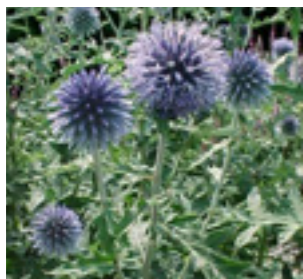
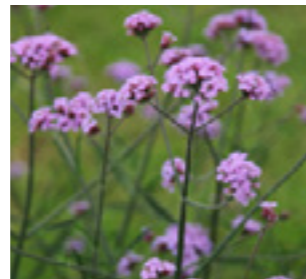
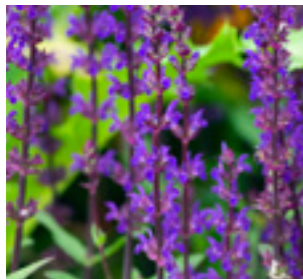


Soft palette

Evergreen structure



Herbaceous mix



Typical residents private terrace

Hotel Felix

Illustrative axonometric view

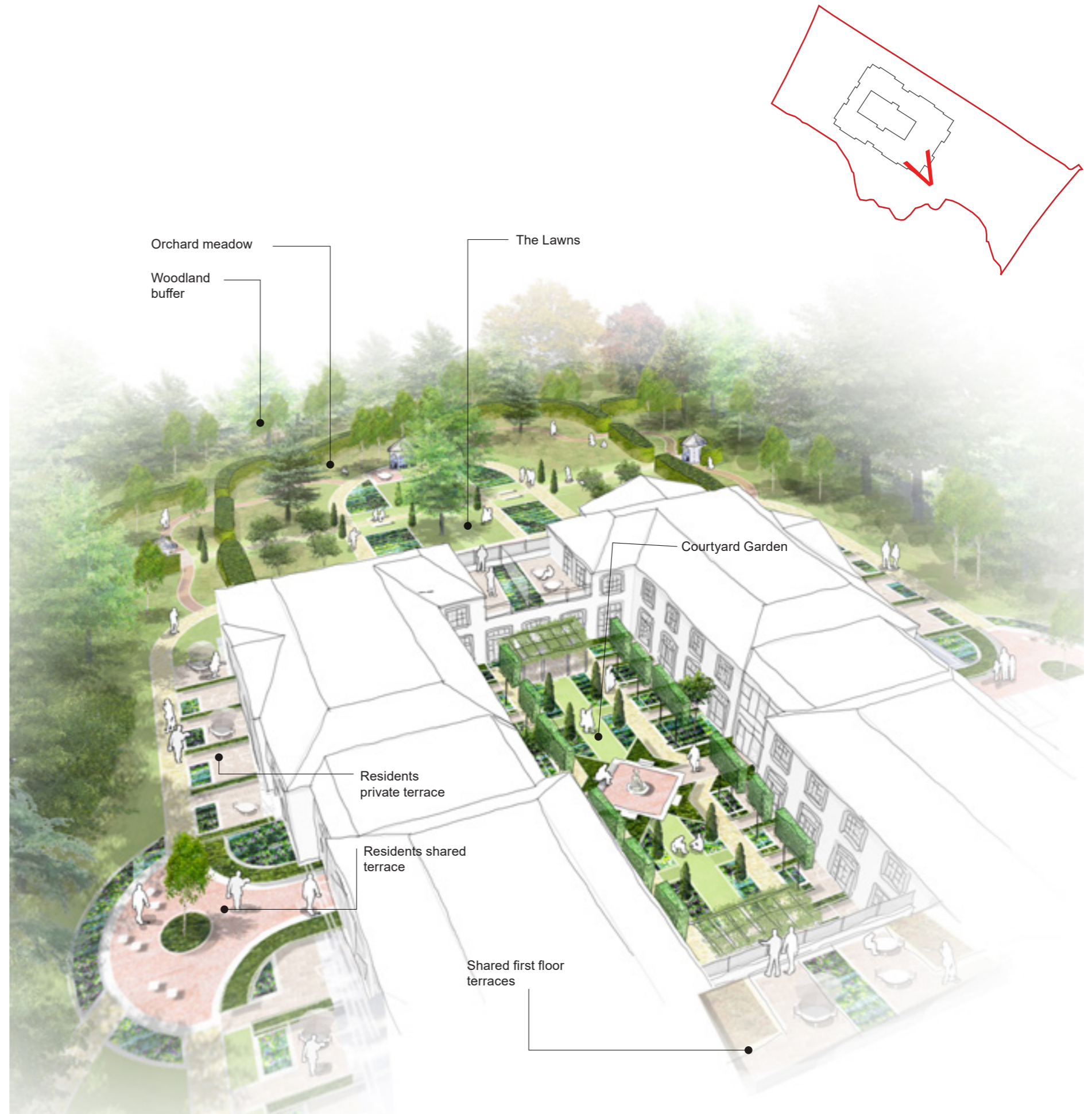
A sensory experience for residents

The rationale is to create a garden for residents to be immersed in a space that reaches all their senses. In line with our body mind and soul, we will use our dementia sensory gardens to improve residents' physical, emotional, mood, and cognition.

For KYN our sensory garden is a space which has been designed to stimulate all the senses and we will engage the residents' feelings of sight, smell, touch, taste, and sound. We want KYN residents to sit in their garden and become immersed in all the surroundings. Touching every sense, residents can listen to all the sounds of nature; the bees are buzzing, the birds singing, the sounds of the wind rustling through plants, and soft wind chime perhaps, whilst engaging is conversation and activity in the garden.

To do this we will ensure the sensory gardens enables residents to:

- Touch and feel the petals, smelling the flowers and listening to the bees and birds singing, creating an immersive space where there is direct engagement with the senses.
- Have lots of time outdoors, breathing fresh air
- Being exposed to sunlight/ (UVB rays) which is incredibly beneficial to the residents' overall physical and cognitive health
- Undertake life-enriching activities in the garden
- Collect flowers from the garden and use them in pressed flower art as part of our life-enriching activities
- Grow their own flowers/ herbs/ vegetables
- Undertake activities including planting and weeding, with pots and beds that are off the ground for residents who have poor dexterity and mobility
- Relax in a peaceful space
- Undertake Reminiscence sessions, with the topics around plants and flowers, recalling favourite plants and the stories associate with gardening and flowers, for example



Axonometric view looking North West

Hotel Felix

Landscape Proposals

The Lawns & Orchard Meadow

The Lawns & Orchard meadow situated to the west of the site form the primary residents garden. They are laid out in an English Country Garden style which complements the architecture. A green backdrop to the area is provided by the landscape buffer planting on the boundary while the space is contained by a 1.8m high Yew hedge the majority of which is retained from the existing site.

Pathways form circular routes and provide residents the opportunity to meander through the various spaces while allowing for access to further amenity. Selected existing trees in the centre of the site are proposed to be relocated maximising the spaces amenity value and avoiding future overshadowing. The remaining trees are integrated into the design and become focal points, strengthening the areas character.

Terraces offer the opportunity for rest and seating. These are designed to be flexible to accommodate events and gatherings. The existing timber Gazebo previously used as a feature in many weddings is proposed to be relocated into the centre of the space positioned in front of a row of Birch trees.

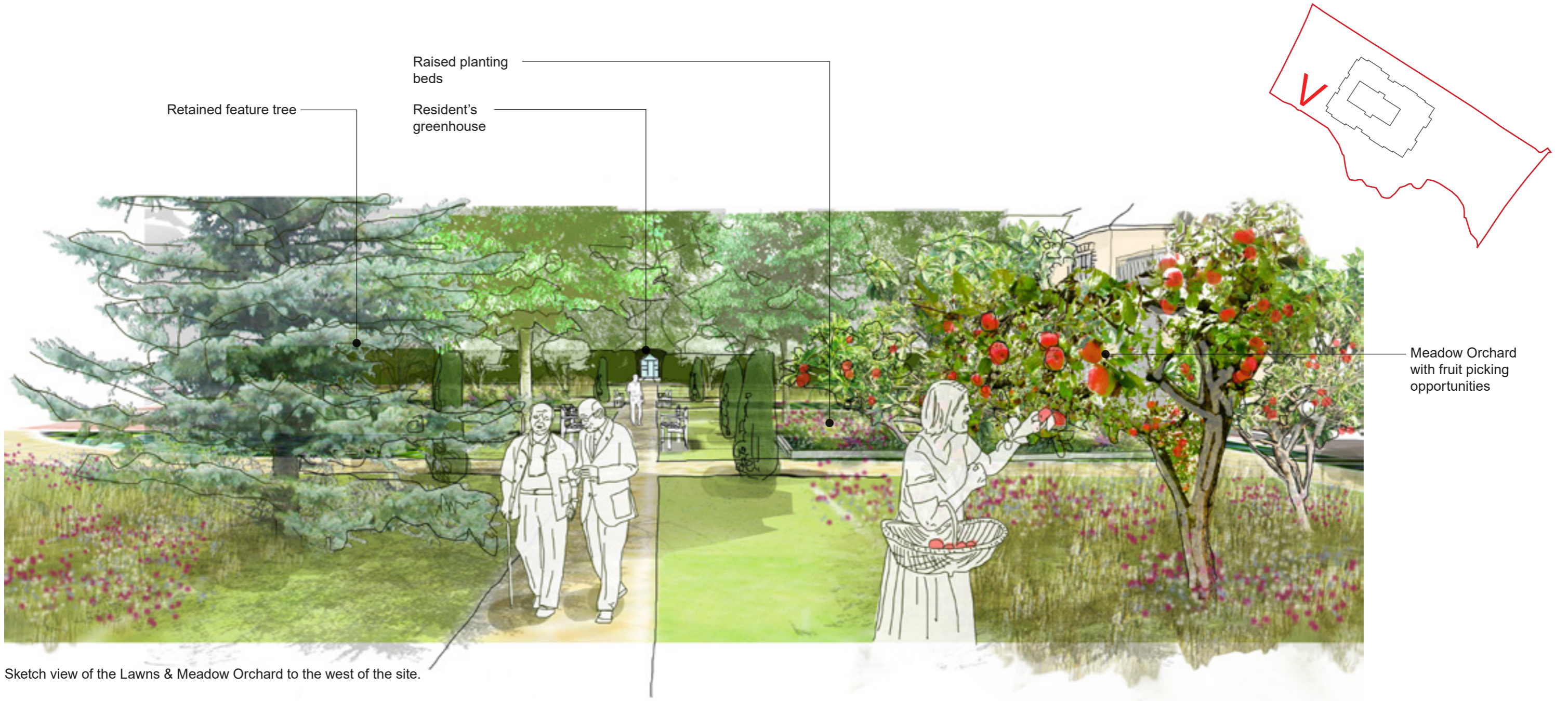
The central vistas that connect strongly to the building are offset by a north - south vista between two greenhouses. These offer residents the chance for additional growing opportunities further to those within the raised planting beds within herbaceous borders.

A central formal lawn transitions to more informal meadow to the edges of the space. Within the meadow small orchard tree planting is proposed bringing further amenity & biodiversity value.

Key Components

1. Relocated Gazebo
2. Herbaceous planting with raised beds
3. Evergreen boundary hedge
4. Residents private terrace & planting bed
5. Residents shared seating terrace
6. First floor seating terrace
7. Greenhouse
8. Orchard tree planting & meadow
9. Feature tree planting
10. Bench seating
11. Lawn
12. Feature shrub planting
13. Additional tree planting
14. Existing feature trees given emphasis
15. Improved woodland understory planting
16. Secure gated access
17. Resin bound gravel pathway
18. Rubberised mulch pathway
19. Storage shed





Sketch view of the Lawns & Meadow Orchard to the west of the site.



Character images of the Lawns and Meadow Orchard.

Hotel Felix

Landscape Proposals

Hard Palette

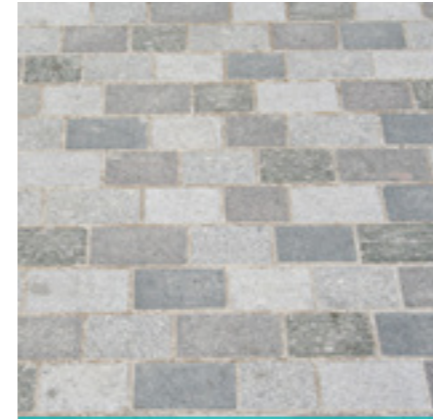
The external hard palette has been selected to be sympathetic to its local context and knit in with the architectural proposals.

The materials and finishes outlined are of a high quality in keeping with the high standard of environment Kyn are proposing to create.

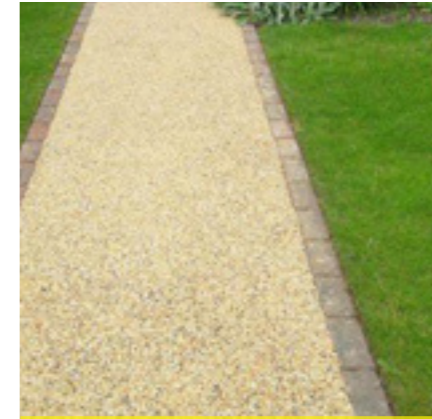
Routes



The Drive -
Buff coloured bound surface with sett detailing



Site thresholds -
Natural stone setts

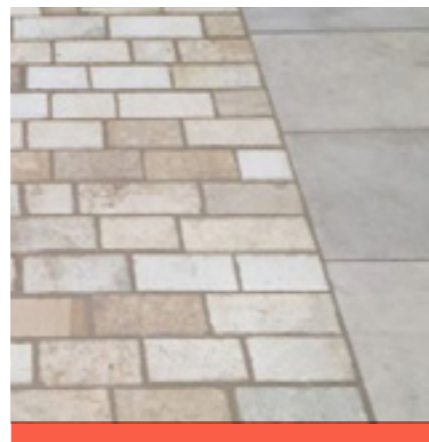


Primary / secondary pathways -
Resin bound gravel pathway with brick edge

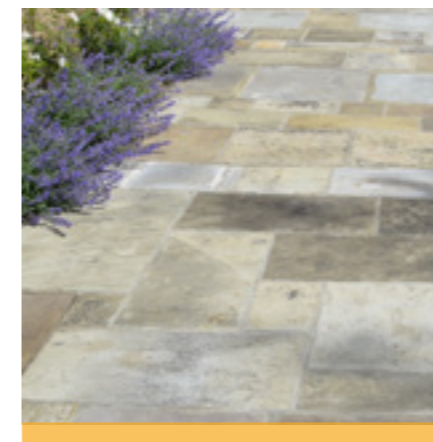


Tertiary pathways -
Bonded rubberised mulch

Spaces



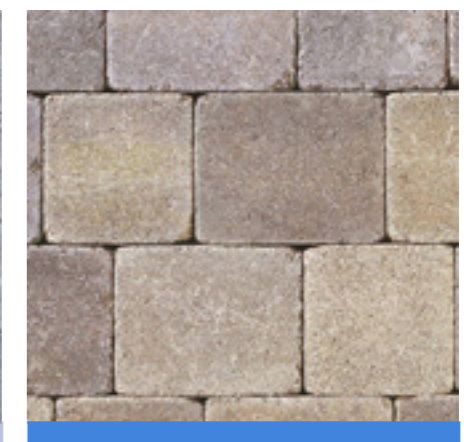
Entrance threshold -
High quality natural stone large unit paviors with sett detailing to the edges



Private terraces -
High quality natural stone paving with sett detailing



Parking Courtyard -
High quality concrete block paving



Pedestrian arrival route -
High quality concrete block paving



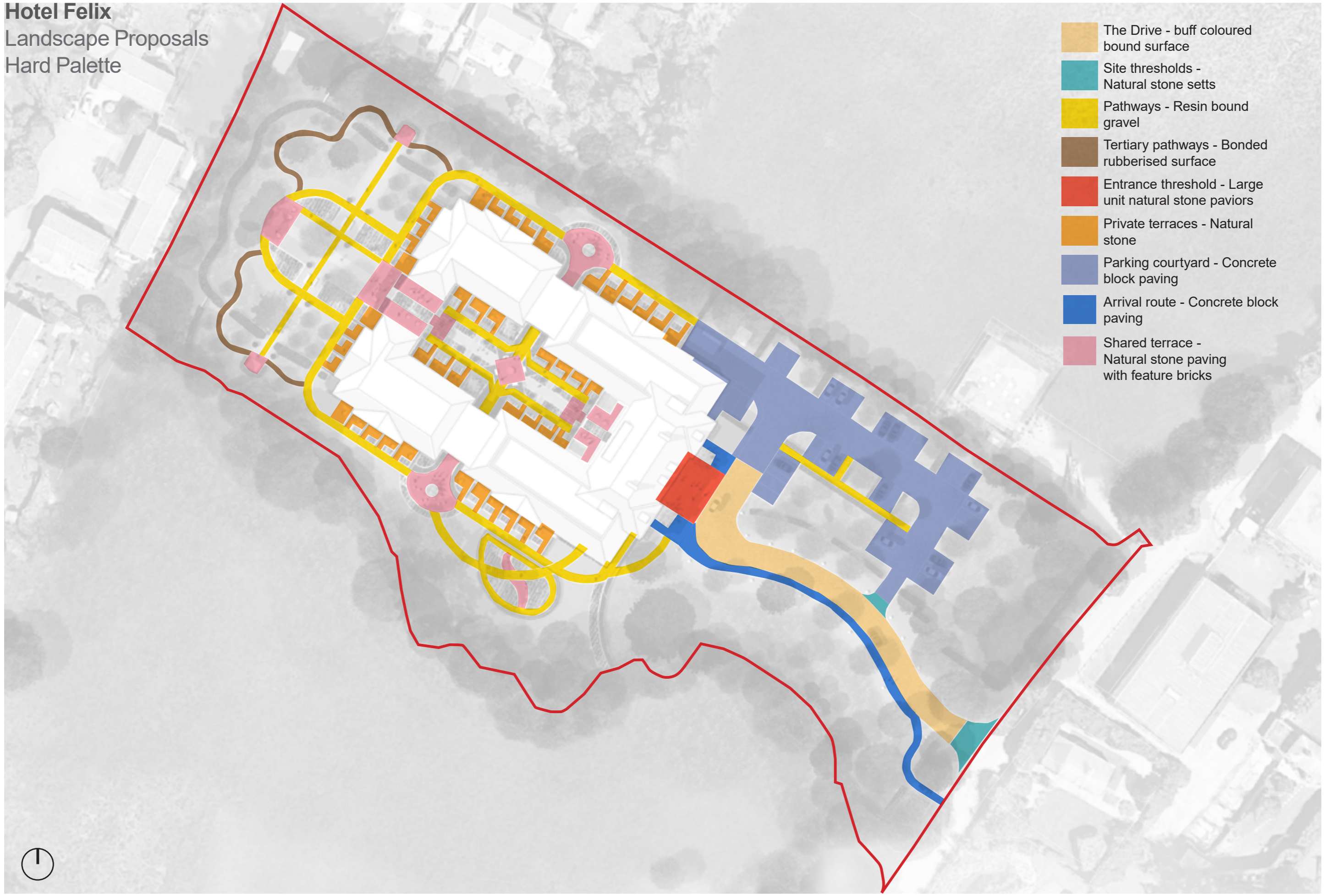
Shared terraces -
High quality natural stone paviors



Shared terraces detailing -
Feature brick pattern and detailing

Hotel Felix
Landscape Proposals
Hard Palette

-  The Drive - buff coloured bound surface
-  Site thresholds - Natural stone setts
-  Pathways - Resin bound gravel
-  Tertiary pathways - Bonded rubberised surface
-  Entrance threshold - Large unit natural stone paviors
-  Private terraces - Natural stone
-  Parking courtyard - Concrete block paving
-  Arrival route - Concrete block paving
-  Shared terrace - Natural stone paving with feature bricks



Hotel Felix

Landscape Proposals Soft Palette - Trees

Tree planting is designed to enhance the character of each space while providing year round interest. The proposed trees will strengthen the local green network and add biodiversity through the inclusion of a variety of species. The proposals will complement the retained trees on site as well as mitigate for any losses.

To minimise tree loss we have consulted with an arborist to identify trees that would be allegeable to be moved through using a tree spade. We have identified ten semi mature (9 Lime trees and 1 Cedar) trees that are to be moved to both facilitate the development of the building and also to improve opportunities for amenity avoiding trees competing with each other to their detriment as they reach maturity. The lime trees are proposed to be moved to the edges of the site to assist in buffering the development while the Cedar is moved to become a feature adjacent to the main entrance to the site.

Proposed specimen and gateway trees positioned at key points will provide focal features alongside new vistas made to the prominent existing trees on site. Additional trees are proposed within any gaps in the woodland buffer to the sites edge. Two of these trees are to be like for like replacements for the category U Maple & Yew that were identified to be removed due to poor health.


Additional small trees including orchard and fruit tree planting will add further interest and assist in improving biodiversity.

Proposed hedge planting integrates into the existing hedges to be retained and is used as a green backdrop to the garden spaces. Hedges within the parking courtyard are designed to lessen the visual impact of car parking as well as to frame the drive.


Tree planting proposals should be read in conjunction with the planting proposals described later in this report.

Existing Trees & Hedges retained




 **Existing trees**
61 No. Trees retained




 **Existing trees relocated -**
10No. Existing semi mature trees to be relocated




 **Existing hedges retained -**
Existing hedges on site retained & incorporated

Proposed Trees & Hedges




 **Feature / Specimen trees -**
Proposed species:
Fagus sylvatica 'Purpurea' (20-25cm)
Amelanchier lamarckii (multi stem 2.5m)
Acer griseum (multi stem 2.5m)
Magnolia grandiflora (12-14cm)




 **Entrance trees -**
Proposed species:
Prunus serrulata 'Amanogawa' (12-14cm)




 **Driveway trees -**
Proposed species:
Quercus robus 'Fatigiata Koster' (18-20cm)
Tilia cordata (18-20cm)




 **Orchard / Fruit trees -**
Proposed species:
Malus sylvestris (20L. pot)
Prunus serrulata 'Amanogawa' (12-14cm)




 **Small trees -**
Proposed species:
Betula utilis 'jacquemontii' (multi stem 2.5m)
Amelanchier lamarckii (multi stem 2.5m)
Sorbus aucuparia (12-14cm)




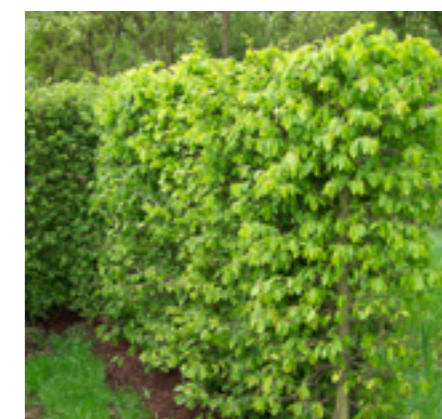
 **Buffer trees -**
Proposed species:
Taxus baccata (18-20cm)
Tilia cordata (18-20cm)
Quercus ilex (12-14cm)
Acer platanoides (12-14cm)




 **Pleached trees -**
Proposed species:
Carpinus betulus (12-14cm, 1.4m clear stem)

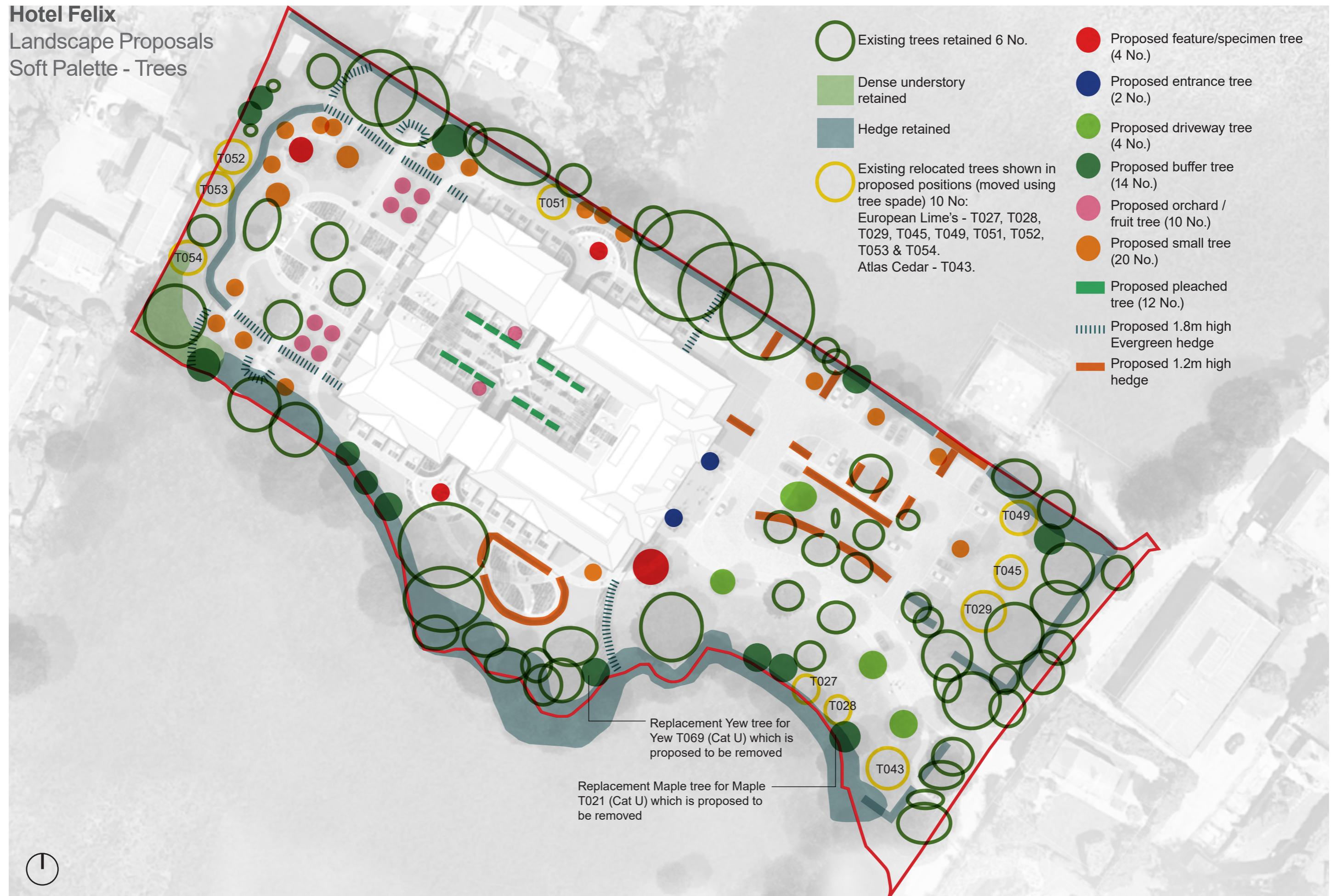


 **High evergreen hedges -**
Proposed species:
Taxus baccata (1.8m high to match existing)



 **Low hedges -**
Proposed species:
Fagus sylvatica (1.2m high to match existing)

Hotel Felix
Landscape Proposals
Soft Palette - Trees



- Existing trees retained 6 No.
- Dense understory retained
- Hedge retained
- Existing relocated trees shown in proposed positions (moved using tree spade) 10 No:
European Lime's - T027, T028, T029, T045, T049, T051, T052, T053 & T054.
Atlas Cedar - T043.
- Proposed feature/specimen tree (4 No.)
- Proposed entrance tree (2 No.)
- Proposed driveway tree (4 No.)
- Proposed buffer tree (14 No.)
- Proposed orchard / fruit tree (10 No.)
- Proposed small tree (20 No.)
- Proposed pleached tree (12 No.)
- Proposed 1.8m high Evergreen hedge
- Proposed 1.2m high hedge

Replacement Yew tree for Yew T069 (Cat U) which is proposed to be removed

Replacement Maple tree for Maple T021 (Cat U) which is proposed to be removed



Hotel Felix

Landscape Proposals

Soft Palette

The planting proposals offer a wide variety of species which inform and strengthen the various spatial characters around the site. To the edge of the site planting looks to buffer the development and planting creates an informal character. This informal edge transitions to a more ordered and structured centre of the site in which will occur the highest intensity of use by residents. To maximise biodiversity and to minimise maintenance there is a focus on native species which would thrive in this environment and be largely self sufficient once established.

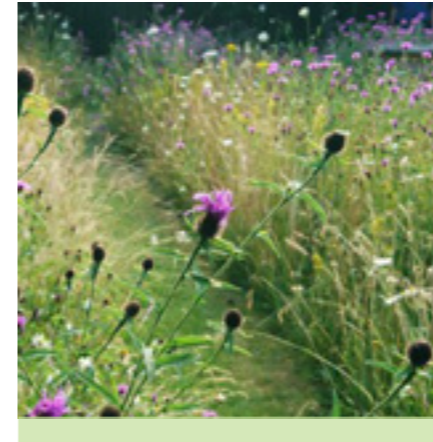
Large areas of what is currently amenity grassland are proposed to be converted into wildflower meadows creating a parkland character in particular to the drive and arrival courtyard. The more programmed garden spaces offer a range of herbaceous planting with a high proportion of evergreen structure. These areas are inspired by the kitchen gardens that were previously on site and will offer residents the opportunity to garden & cultivate.

The primary residents garden to the west of the building is contained by high evergreen hedges and is in the english country garden style. Lush herbaceous planting beds will be punctuated by specimen shrubs.

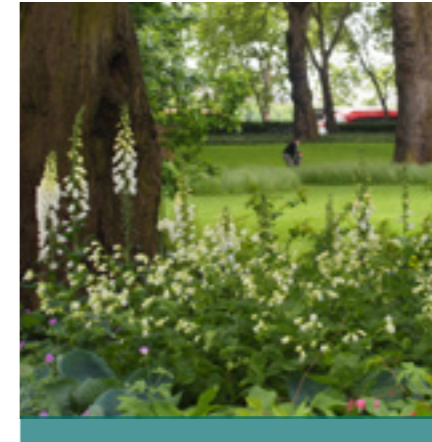
The sensory garden will have a focus on herb & physic planting and be aimed primarily for use by the residents with dementia. This space will be closely linked to the proposed part of the building dedicated to dementia research located adjacent to the garden.



Lawn -
Shade tolerant mown lawn & amenity grassed areas, bulb planting integrated for seasonal interest.



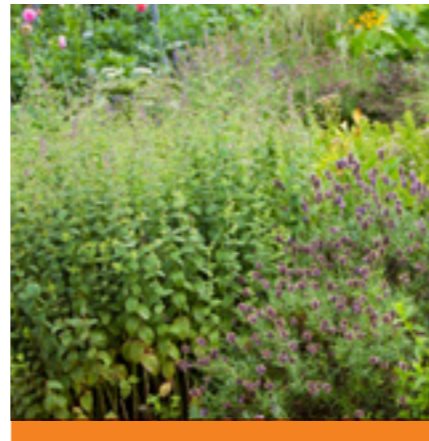
Wildflower meadow -
Species rich wildflower meadow



Woodland understory & shrub planting -
Thinned under storey with seasonal bulb / perennial planting under existing trees and the addition of native border shrubs



Herbaceous border planting -
Lush herbaceous beds to terraces & areas of the gardens.



Sensory garden -
Herb planting



Low hedges -
700mm high evergreen hedges



Climbing plants -
Climbing plants trained against building facade or pergolas.



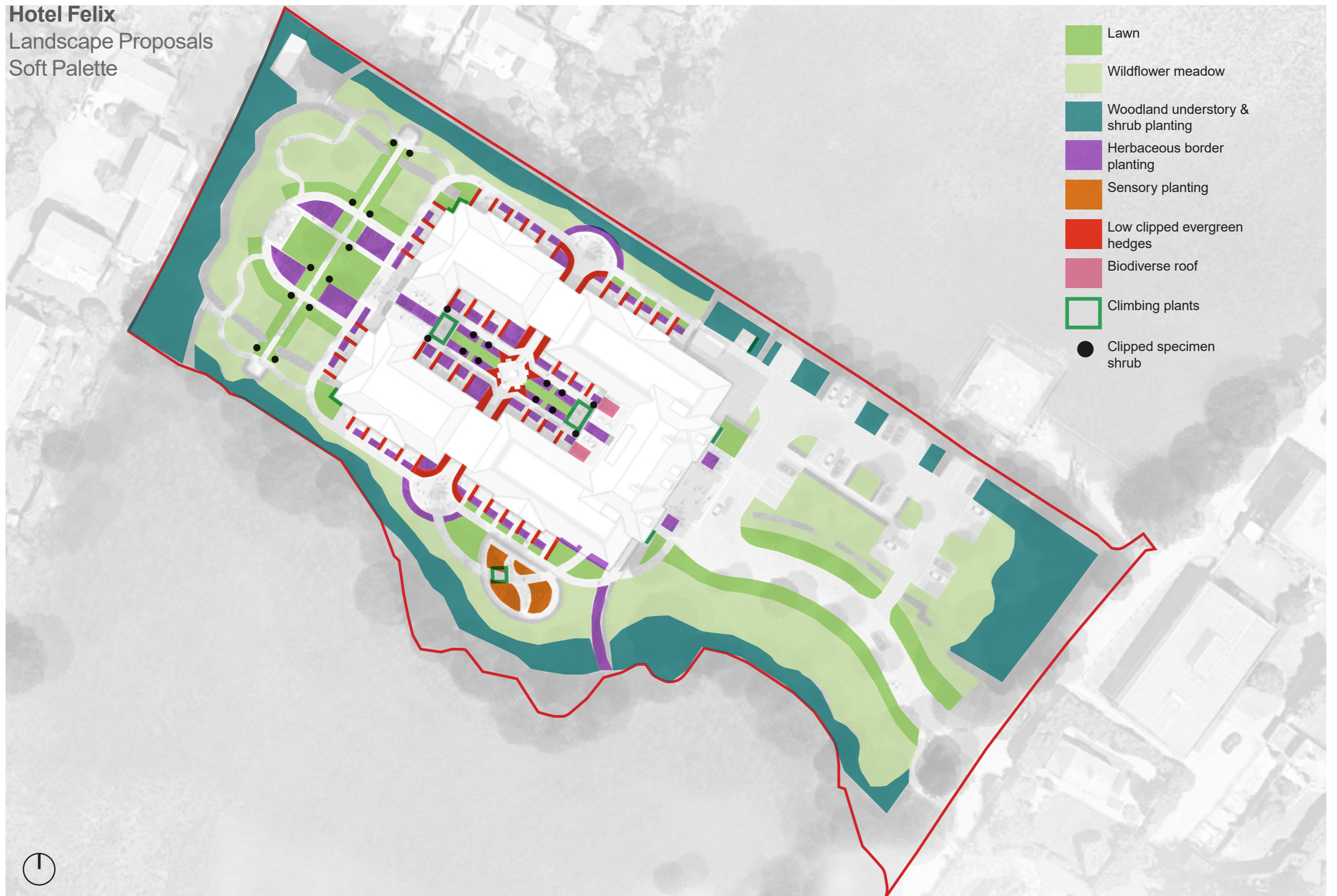
Specimen shrubs -
Clipped evergreen specimen shrubs



Biodiverse roof -
Species rich biodiverse roof

Hotel Felix
Landscape Proposals
Soft Palette

-  Lawn
-  Wildflower meadow
-  Woodland understory & shrub planting
-  Herbaceous border planting
-  Sensory planting
-  Low clipped evergreen hedges
-  Biodiverse roof
-  Climbing plants
-  Clipped specimen shrub



Hotel Felix

Landscape Proposals Boundaries & Features

The landscape design celebrates the site's heritage through salvaging many aspects of the existing garden and building to integrate into the proposals. The prominent Coade stone dog is repositioned as a central feature within the courtyard space while the white gazebo is moved to become a focal point of the primary residents garden. Stonework and features from the existing building have also been salvaged integrating these elements into the herbaceous borders as well as using them as edge markers down the drive.

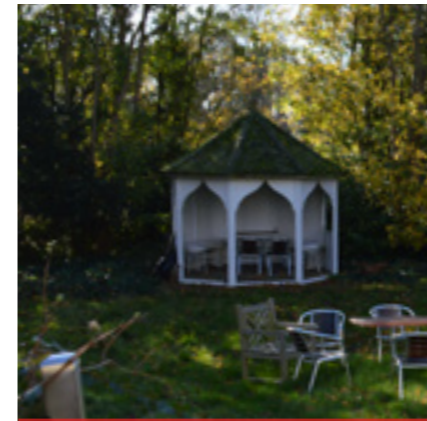
The proposals are to be contained within a secure perimeter that is in keeping with the landscape setting, keeping residents safe as well as the site secure. Areas of the garden such as the sensory garden are proposed to be enclosed by a low fence and hedge to keep more vulnerable residents safe.

Oak seating and two greenhouses add amenity to the garden. Oak pergolas proposed in the courtyard & sensory garden provide shelter while framing vistas.

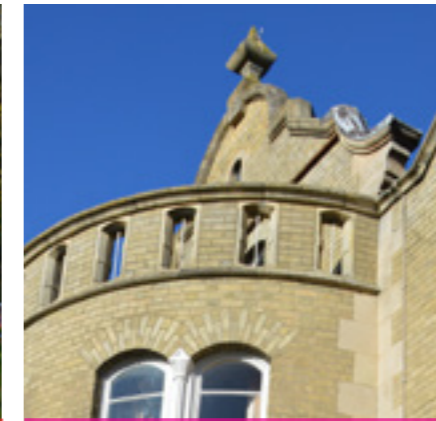
Celebrating the sites heritage



Coade stone dog -
Repositioning of the coade stone dog to become the focal point of the courtyard.



Gazebo -
Relocation of the gazebo to become a feature of the primary residents garden.



Salvaging stone features -
Stone architectural features used as driveway markers and within planting beds.



Existing (non compliant) stone steps re-purposed as edging to planting beds

Boundaries



Close board fencing -
1.8m high close board timber fencing is proposed to form the boundary between adjacent residential properties. Painted dark green within the landscape buffer.



Metal hoop top fencing -
1.8m high dark green metal hoop top fencing positioned within and softened by boundary planting.



Chestnut cleft fencing -
1.2m high Chestnut cleft timber fencing enclosing the east of the site.



Metal railing -
1.8m high metal railing painted black forming the secure edge between the garden spaces and arrival courtyard, with matching metal gate.

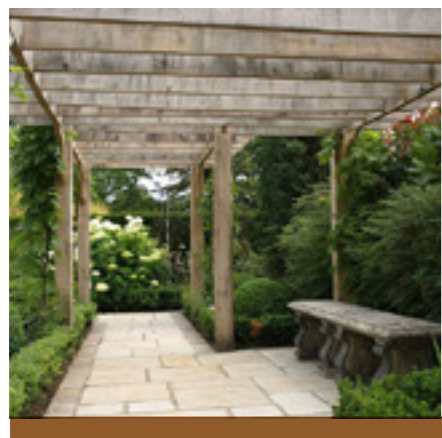


Picket fence -
1.2m high Timber picket fence to sensory garden, painted white with matching gates.

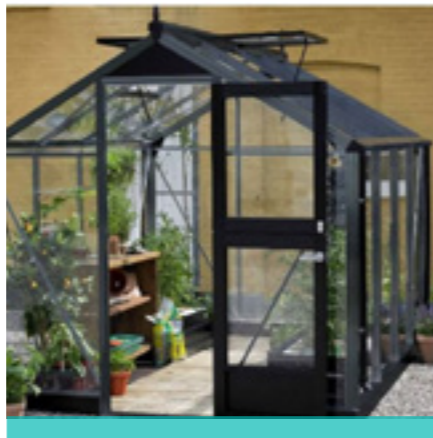


Timber gate -
1.8m high close board lockable timber gates painted dark green set within yew hedging.

Features



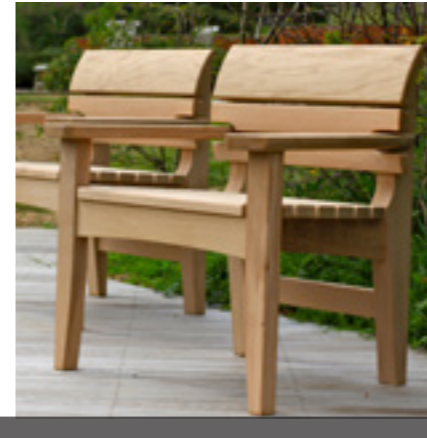
Pergola -
Oak timber pergola with a natural finish.



Greenhouse -
Metal framed greenhouse



Timber bench -
Oak timber bench with arm & back rests with a natural finish.



Timber seat -
Oak timber seat with arm & back rests with a natural finish



Storage shed -
Timber storage shed to be replaced with new timber shed of the same height and proportions, painted dark green.








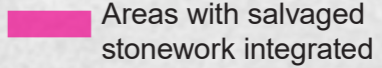
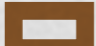




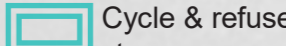


Cycle & refuse stores -
Refer to architects details.

Hotel Felix

Landscape Proposals

Boundaries & Features

-  1.8m high Timber close board fence
-  1.8m high weldmesh fence
-  1.8m high metal railing & matching metal gate
-  1.2m high picket fence
-  1.2m high Chestnut cleft fencing
-  Relocated Coade stone dog
-  Relocated gazebo
-  Areas with salvaged stonework integrated
-  Timber pergola
-  Timber bench / seat
-  Greenhouse
-  1.8m high timber gate
-  Timber storage shed
-  Cycle & refuse store



Hotel Felix

Landscape Proposals Ecology & Biodiversity

The landscape offers several opportunities for ecological enhancement. Following on from the findings and recommendations made in the ecological assessment the landscape design has incorporated the following features:

- Nesting boxes / bat boxes
- Wildlife friendly planting scheme (please refer to soft palette & trees within landscape proposals)
- Bug boxes / hotels
- Log piles
- Lighting plan that is direct and of low light spill. (please refer to lighting design).

These additional features complement the planting proposals put forward earlier within this report and work together to further enhance the on site biodiversity and ecology.

For further information on ecology & biodiversity please refer to the ecologists reports.



Nesting boxes / Bat boxes
Timber bird nesting boxes and bat boxes integrated into woodland buffer edge.



Wildlife friendly planting -
Native rich planting mixes supporting wide range of wildlife.



Bug boxes / Hotels -
Bug boxes & bug hotels incorporated within the woodland buffer.



Log piles -
Site won log piles of mixed tree species situated within woodland buffer



Lighting -
Sensitive lighting scheme which is direct and has low light spill. (See lighting plan for further detail)



Biodiverse roof -
Biodiverse roof pre sown wildflower mat with wildflowers, herbs and flowering perennials.

Hotel Felix
Landscape Proposals
Ecology & Biodiversity

-  Bird nesting / bat boxes
-  Bug boxes / hotels
-  Log piles (site won)
-  Biodiverse roof
-  Biodiversity buffer

