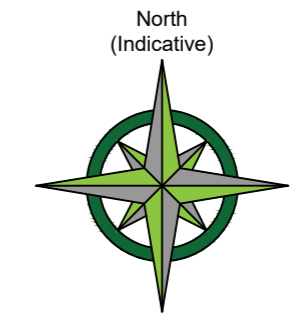
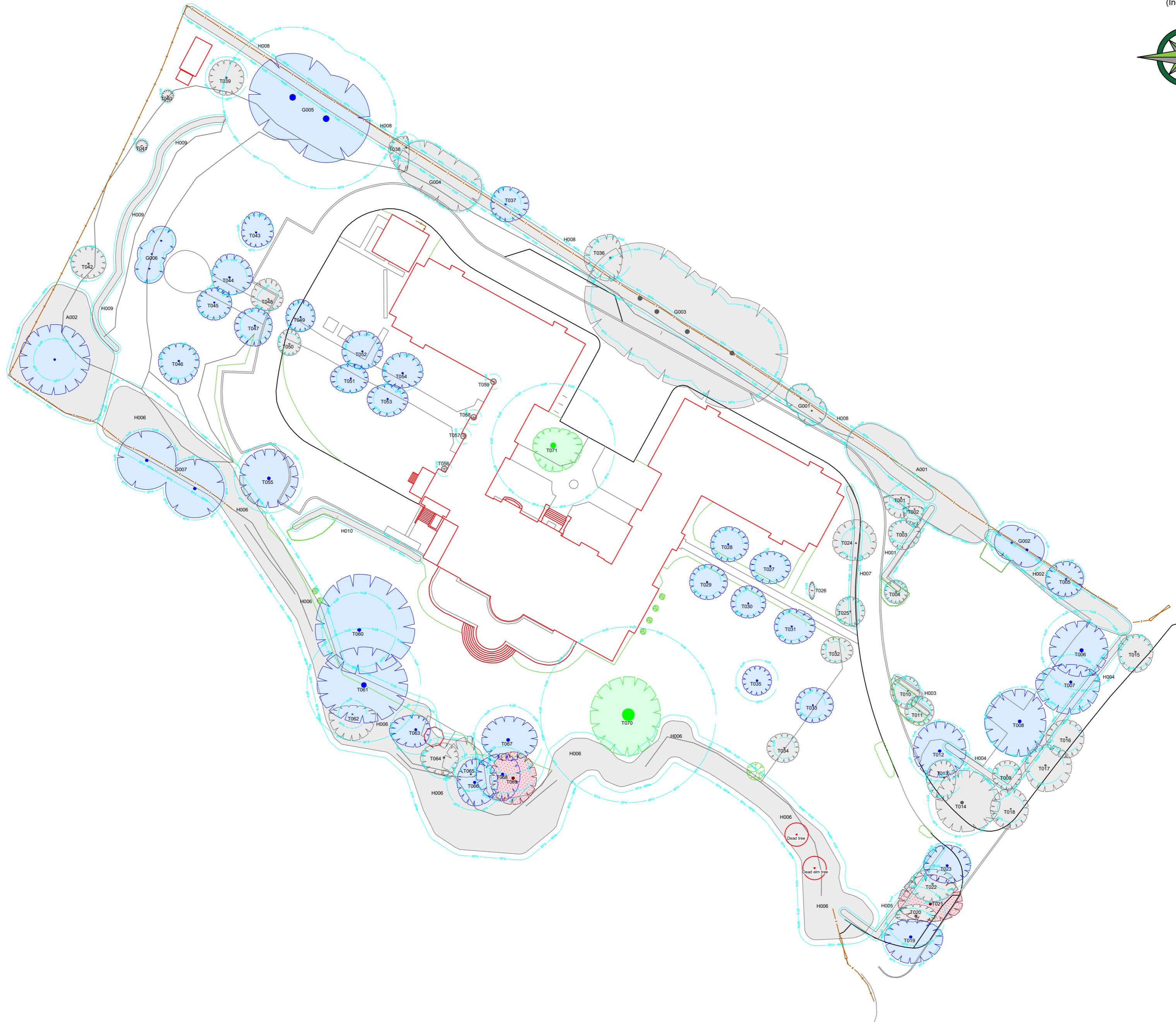


Existing Site Plan



CATEGORY AND DEFINITION

Trees unsuitable for retention	
Category U	Those in such condition that they cannot realistically be retained as living trees in the current land use for longer than 10 years
Trees to be considered for retention	
Category A	Trees of high quality with an estimated remaining life expectancy of at least 40 years
Category B	Trees of moderate quality with an estimated remaining life expectancy of at least 20 years
Category C	Trees of low quality with an estimated remaining life expectancy of at least 10 years, or young trees with a stem diameter below 150mm

NOTE:
 Hayden's Arboricultural Consultants were provided with a Topographical Survey but these do not always show the positions of all the trees/features on site. The locations of any additional features have been fixed using GPS. As such the position of the trees/landscape features should not be taken as exact but gives a fair distribution of their locations on site.

CP NOTE:
 This document details the constraints created by the trees on the site and should be used as a design tool to inform the layout of the proposed development. This document is not sufficient for planning submission purposes.

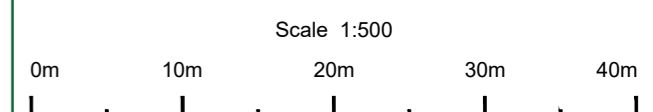
LEGEND

	Existing Tree/Feature BS 5837:2012 Category A
	Existing Tree/Feature BS 5837:2012 Category B
	Existing Tree/Feature BS 5837:2012 Category C
	Line of Root Protection Area (RPA) - calculated following guidelines set in BS 5837:2012
	Existing Tree/Feature to be Removed BS 5837:2012 Category U
	Additional feature which doesn't meet BS 5837:2012 categorisation but is included for reference

23/04/20 JF Based on Greenhatch group drg no. 36289 Rev 0

The position, condition, and dimensions of the trees are based on a site survey undertaken on 15/04/20

"The original of this drawing was produced in colour - a monochrome copy should not be relied upon"



© HAYDEN'S 2020
 5 Moseleys Farm Business Centre
 Fornham All Saints,
 Bury St Edmunds
 Suffolk IP28 6JY
 Head Office: 01284 765391
 Southern Office: 01722 657423
 Email: info@treesurveys.co.uk
 www.treesurveys.co.uk

Client:	Cassel Hotels (Cambridge) Limited	Drawing Title:	Constraints Plan
Site:	Hotel Felix, Whitehouse Lane, Huntingdon Road, Girton, CB3 0LX		
Date:	23/04/20	Drawn By:	JF
Scale:	1:500 (A2)	Checked By:	SHO
		Drawn No.:	Cli/Pro/8100-D-CP
		Rev.:	-