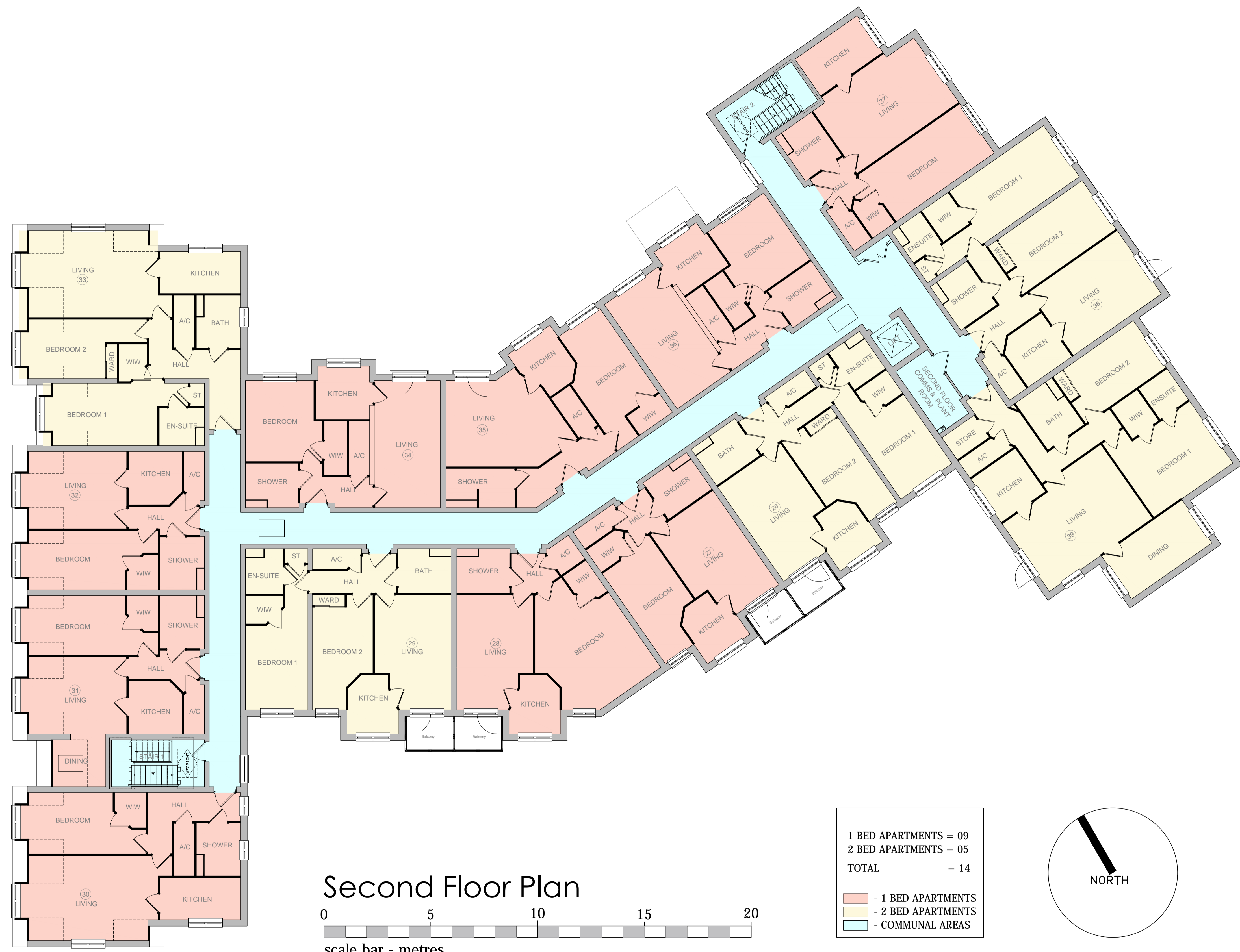
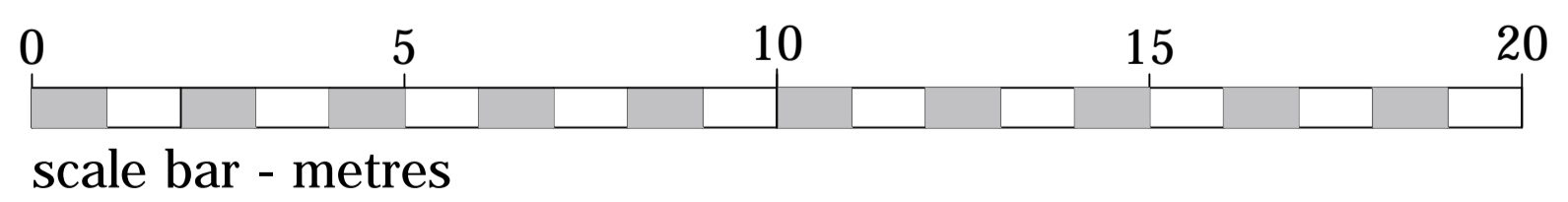


REVISIONS		
Rev.	Date	By



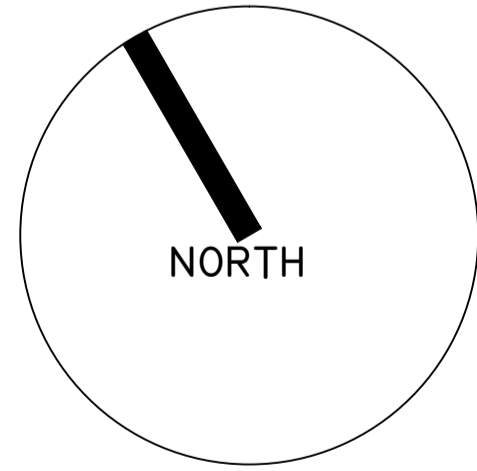
### Second Floor Plan



1 BED APARTMENTS	= 09
2 BED APARTMENTS	= 05
TOTAL	= 14

<span style="display:inline-block; width:10px; height:10px; background-color: #f08080; border: 1px solid black;"></span>	- 1 BED APARTMENTS
<span style="display:inline-block; width:10px; height:10px; background-color: #fff9c4; border: 1px solid black;"></span>	- 2 BED APARTMENTS
<span style="display:inline-block; width:10px; height:10px; background-color: #e0f7fa; border: 1px solid black;"></span>	- COMMUNAL AREAS



**planning issues**  
TOWN PLANNING AND ARCHITECTURAL DESIGN  
Gideon Lemberg RIBA  
Design Director  
Churchill House \* Albion Park  
Hoffield Road \* St Albans AL4 0LA  
Telephone: 01727 733650  
Fax: 01727 733651  
E-mail: design@planningissues.co.uk

Client  
**Churchill Retirement Living**

Project Title  
PROPOSED RETIREMENT HOUSING  
Station Road,  
Great Shefford,  
Cambridge, CB22 5LR

Drawing Title  
SECOND FLOOR PLAN

Scale	1:100 @ A1	Date	01.11.21
Drawn	MJS/EKS	Checked	GSL
Drawing No.	40040GS/PA04	Rev.	