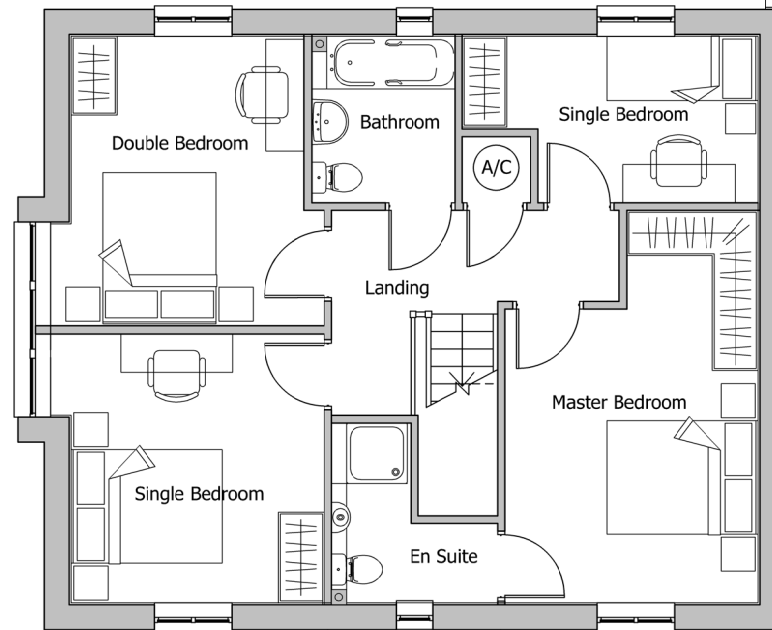


The scaling of this drawing cannot be assured

Revision	Date	Drn	Ckd
-	Revisions undertaken to LPA consultation responses and feedback	28.02.20	ROR ST
P1	Plot numbers updated in line with revised layout to LPA comments	15.04.21	PL ROR

NO BAY OR WINDOWS TO PLOTS: 81, 82, 83, 96, 97



FIRST FLOOR PLAN

PLOT NUMBERS:
AS: 55, 81, 97, 107
OPP: 1, 82, 83, 89, 96

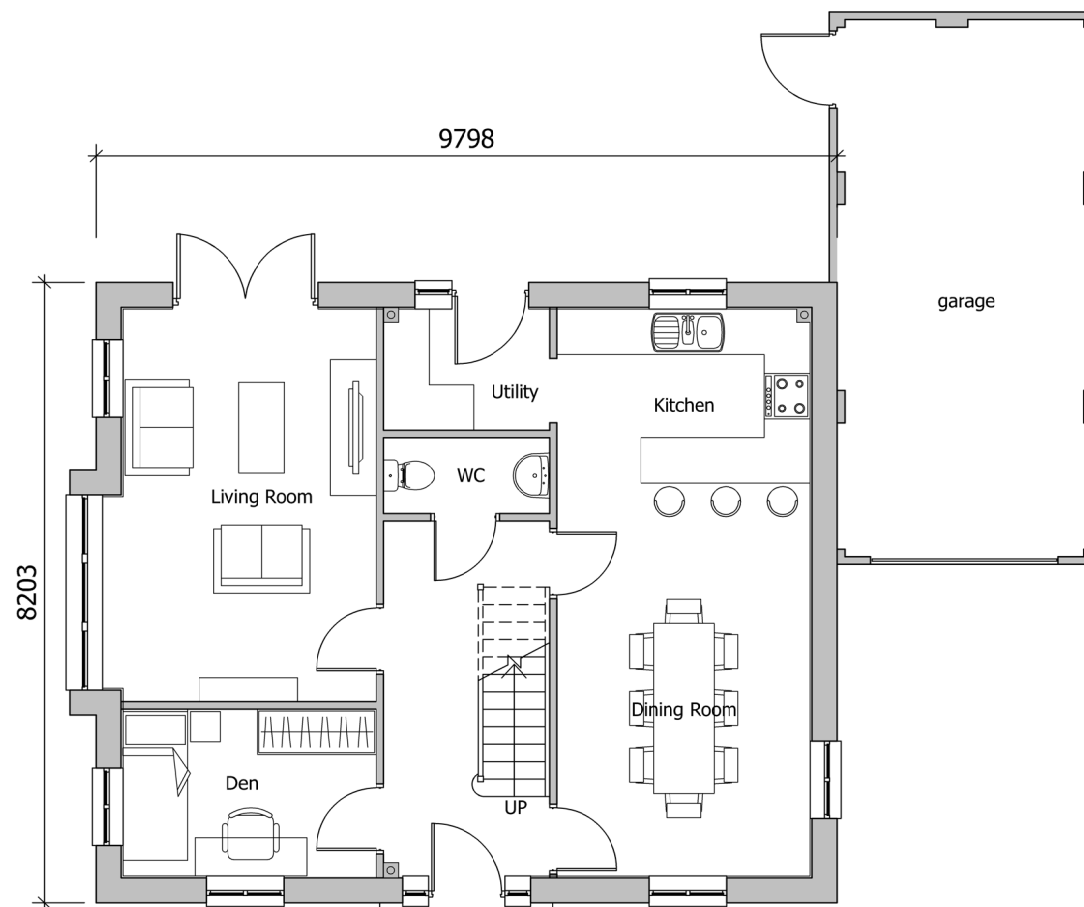
REFER TO SITE LAYOUT MATERIAL PLAN A-P10-017 FOR INDIVIDUAL PLOT MATERIALS

PARKING	
ON PLOT DRIVEWAY	1
GARAGE/CAR PORT	1

GENERAL PRINCIPLE PARKING PROVISION
REFER TO SITE LAYOUT HOUSING MIX A-P10-015 FOR INDIVIDUAL PLOT SITUATIONS



NO BAY OR WINDOWS TO PLOTS: 81, 82, 83, 96, 97



AS
GROUND FLOOR PLAN

Garage position shown as plot 89, see site plan for individual plot garage positions

ATTACHED GARAGE TO PLOTS: 81, 82, 89, 96, 97

Note: Window positions and sizes may vary slightly dependent on house type character area location (internal layout is constant). This floor plan reflects the Village Street character area variant. Please refer to general arrangement elevation drawings (P-13 series) for each character area.

PLANNING

Project
**LAND AT TEVERSHAM ROAD
FULBOURN**

Drawing Title
**HOUSE TYPE J
FLOOR PLANS**

Date	Scale	Drawn by	Check by
25.02.20	1:100@A3	ROR	ST
Project No	Drawing No	Revision	
28815	28815-P11-140	P1	

**BARTON
WILLMORE**

Town Planning • Master Planning & Urban Design • Architecture •
Landscape Planning & Design • Infrastructure & Environmental Planning •
Heritage • Graphic Communication •
Communications & Engagement • Development Economics

bartonwillmore.co.uk



Offices at Birmingham Bristol Cambridge Cardiff Ebbsfleet Edinburgh
Glasgow Leeds London Manchester Newcastle Reading Southampton