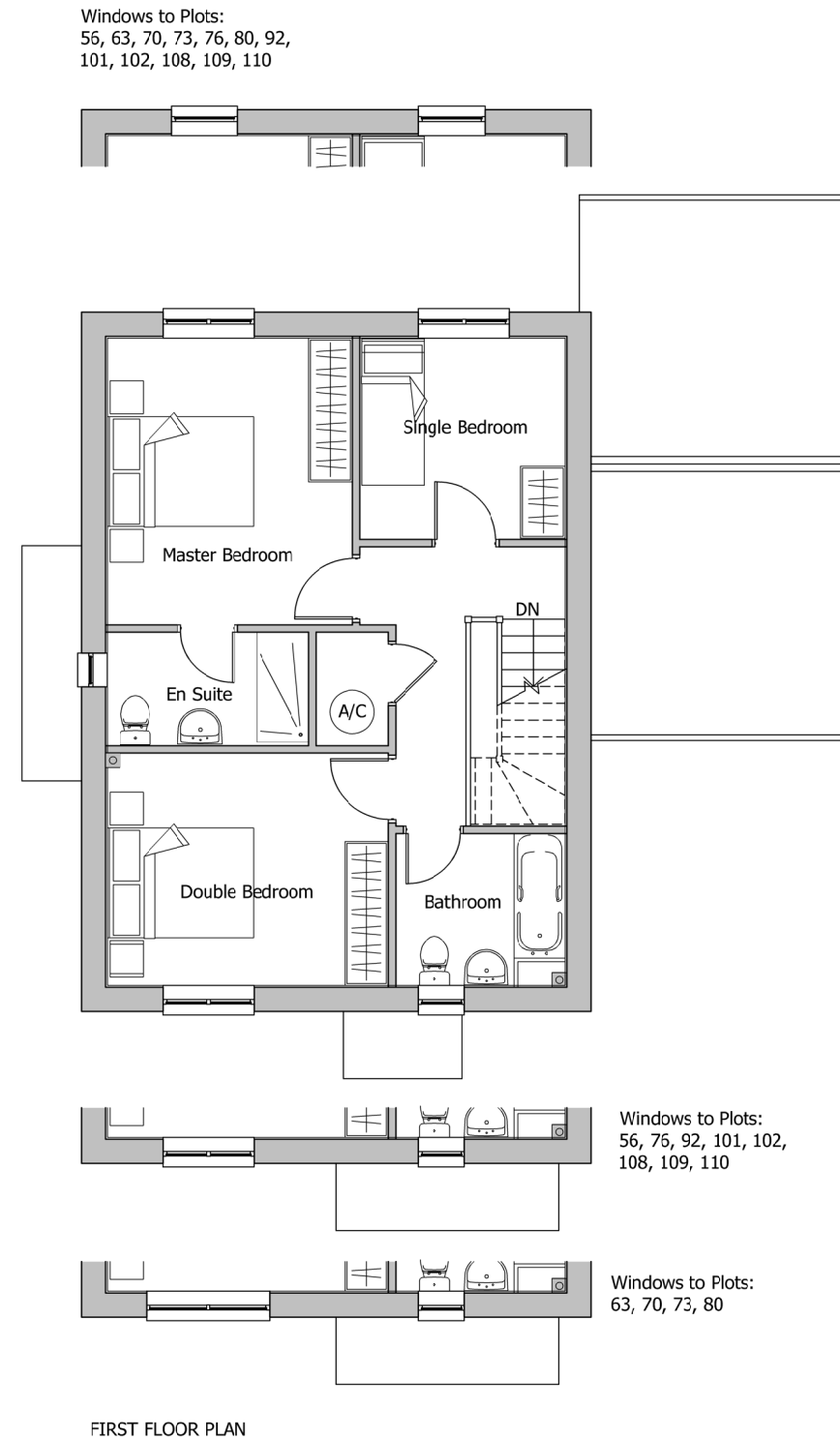
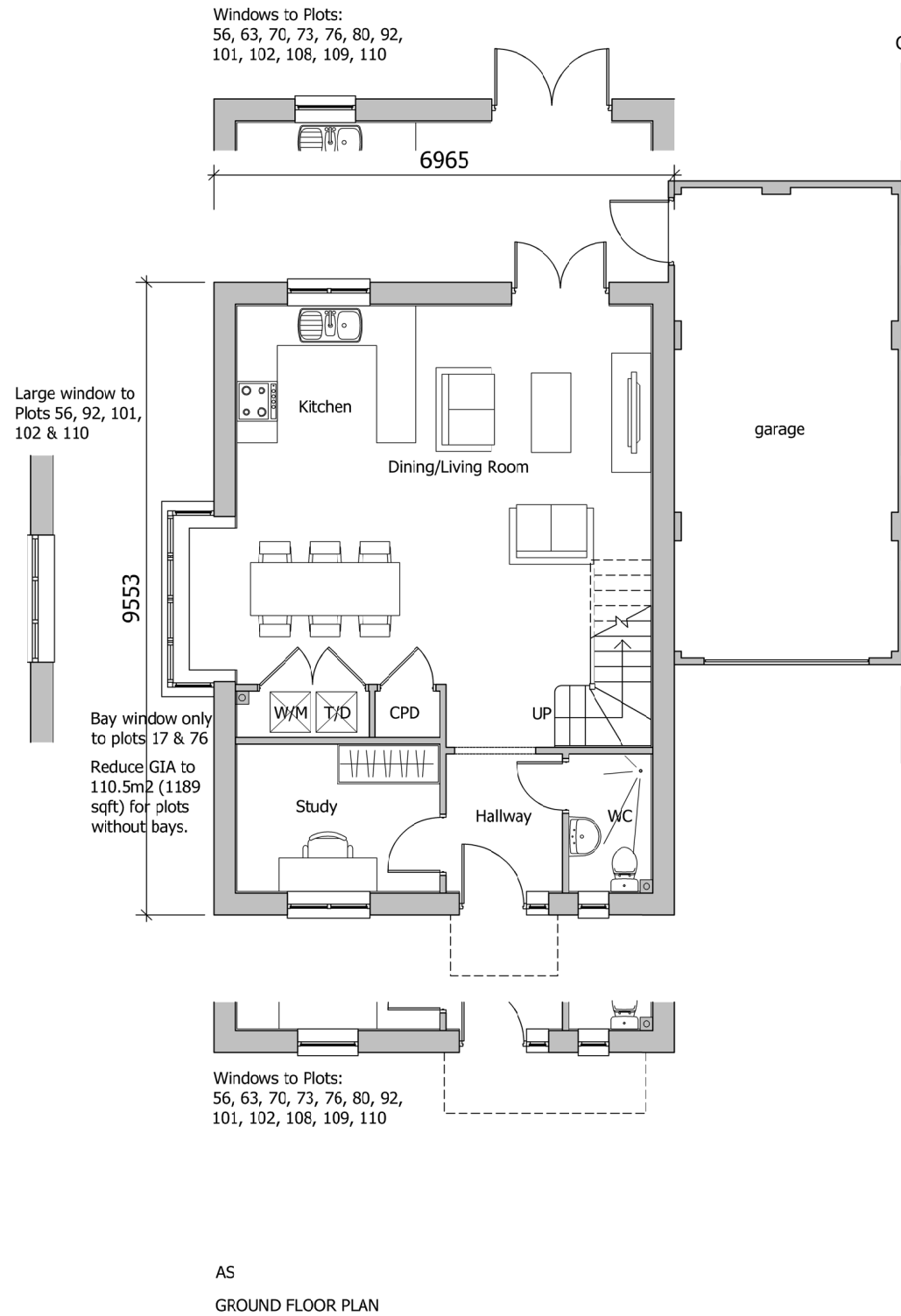


The scaling of this drawing cannot be assured

Revision	Date	Drn	Ckd
-	30.08.19	EM	CB
P1	28.02.20	ROR	ST
consultation responses and feedback			
P2	08.06.20	MA	PN
elevation amended			
P3	15.04.21	PL	ROR
Plot numbers updated in line with revised layout to LPA comments			



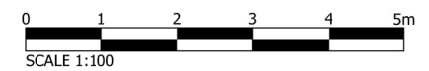
PLOT NUMBERS:  
AS: 17, 56, 63, 73, 76, 92, 102  
OPP: 70, 80, 101, 108, 109, 110

REFER TO SITE LAYOUT MATERIAL PLAN  
A-P10-017 FOR INDIVIDUAL PLOT MATERIALS

REFER TO SITE PLAN A-P10-010 FOR  
VARIATIONS OF GARAGE LOCATIONS.

PARKING	
ON PLOT DRIVEWAY	1
GARAGE/CAR PORT	1

GENERAL PRINCIPLE PARKING PROVISION  
REFER TO SITE LAYOUT HOUSING MIX  
A-P10-015 FOR INDIVIDUAL PLOT SITUATIONS



## PLANNING

Project  
**LAND AT TEVERSHAM ROAD  
FULBOURN**

Drawing Title  
**HOUSE TYPE E  
FLOOR PLANS**

Date	Scale	Drawn by	Check by
15.07.19	1:100@A3	WL	ST
Project No	Drawing No	Revision	
28815	28815-P11-50	P3	

Note: Window positions and sizes may vary slightly dependent on house type character area location (internal layout is constant). This floor plan reflects the Village Lane character area variant. Please refer to general arrangement elevation drawings (P-13 series) for each character area.

**BARTON  
WILLMORE**

Town Planning • Master Planning & Urban Design • Architecture •  
Landscape Planning & Design • Infrastructure & Environmental Planning •  
Heritage • Graphic Communication •  
Communications & Engagement • Development Economics

bartonwillmore.co.uk



Offices at Birmingham Bristol Cambridge Cardiff Ebbsfleet Edinburgh  
Glasgow Leeds London Manchester Newcastle Reading Southampton