

SouthCambs

Magazine

www.scambs.gov.uk

Spring 2021



Support to self-isolate

See page 5

Local Wildlife Trusts nature walks


See page 34

6 May elections

See page 36

Image credit: Wildlife Trusts cowslips at Trumpington Meadows

Plus: Covid support | Community | Recycling and waste | Environment
Democracy | Planning | Transport

 Remember to recycle in your blue bin when finished



Is your conservatory too cold in the winter and too hot in the summer?

FREE
PLASTERING
& ELECTRICS

On all orders before 31st May 2021

Transform your conservatory into an all year round living space in just 7 days



In just a few days we'll convert your old conservatory into a room you can enjoy all year round.

Why choose a Guardian Warm Roof from Projects4Roofing:

- Nice & cool in the summer - cosy & warm in the winter
- Thermally efficient & fully insulated
- Reduce fuel bills with regulated heat all-year-round
- Aesthetically pleasing, complimenting the existing building
- Adding value to your home

Projects4Roofing offer a fixed fee quote on all jobs backed by a 20 year guarantee.

Contact us for a FREE no obligation quote 01223 258049

01223 258049
info@projects4roofing.co.uk
projects4roofing.co.uk



Hello

Welcome to the spring issue of South Cambs Magazine

Our communities have reacted exceptionally to the Coronavirus pandemic during the past 12 months, but it remains critical for the health of our families and friends that we continue to follow the rules. If you are required to self-isolate and need financial or practical help to do so, there are clear ways we can help. Read about them on page 5.

With us all having spent so much more time at home, I'm sure a spring clean is on the agenda. But do you know the most environmentally-friendly ways to dispose of your old items, along with bigger objects like carpets, furniture or appliances? Our guide on pages 26 and 27 will help you make the green choice when it comes to your clear out – and ensure you avoid any waste ending up being fly-tipped in the countryside.

I'm thrilled to report that at the start of February we adopted our very first Doubling Nature Strategy. This comes after we finalised a Zero Carbon Strategy last summer. The days when we can just take nature for granted are long gone. Just mitigating for

damage is no longer an option. We now have no choice but to actively find every opportunity we can to protect and enhance what natural assets we have and to double, as an absolute minimum, the land that is devoted to nature. This is what our Doubling Nature Strategy is all about. Find out more on page 30.

Finally, I wanted to highlight how hard our Shared Planning Service with Cambridge City Council is working to help bring forward the right new homes in the right places. If you flick to page 42, you'll see a breakdown of our three new area teams for development management and, importantly, how you can get in touch with them.

Enjoy the magazine.

Cllr Bridget Smith
Leader
South Cambridgeshire District Council



The next issue of South Cambs Magazine will be delivered between 24 May and 5 June 2021.

For all delivery enquiries please contact Smart Distribution on scdc@smartdistribution.co.uk or 0800 6444 011.

For a large print copy please contact:

communications@scambs.gov.uk
 03450 450 500

Contents

| | |
|---------------------|----|
| Contact us | 4 |
| Covid support | 5 |
| Community | 16 |
| Recycling and waste | 21 |
| Environment | 30 |
| Democracy | 36 |
| Planning | 42 |
| Competition | 46 |

South Cambs Magazine

Enquiries should be directed to:

Editor: Gareth Bell
Editorial: Hannah Coetsee,
Judy Foster and Tom Horn

South Cambridgeshire District Council,
South Cambridgeshire Hall,
Cambourne Business Park, Cambourne,
Cambridge, CB23 6EA

E: communications@scambs.gov.uk
T: 03450 450 500

Design: Danielle Harrington

Advertising:
Charlotte Dyason
Media Shed Ltd, 58 High Street,
Maidstone, Kent ME14 1SY

E: charlotted@media-shed.co.uk
T: 0203 137 9119

The opinions and views expressed in South Cambs Magazine are not necessarily those of South Cambridgeshire District Council or Media Shed Ltd. All data contained in advertisements, being subject to the Advertising Standards Authority guidelines, is accepted in good faith at the time of going to press.

Printed on wood fibre from sustainable forests.

When you have finished with this magazine, please recycle it in your blue bin.

Contact us

The best way to find up to date information about how Council services are currently impacted by the pandemic is via our website.

 www.scams.gov.uk/coronavirus

Social media

We also regularly post updates on our social media channels. You can follow us for information or get in touch on:

  South Cambridgeshire   @SouthCams

Email or call

| | | |
|--------------------------|--|---------------|
| Benefits: | benefits@scams.gov.uk | 03450 450 061 |
| Building Control: | buildingcontrol@3Csharedservices.org | 0300 772 9622 |
| Business Support: | OpenForBusiness@scams.gov.uk | 01954 713 465 |
| Elections: | elections@scams.gov.uk | 03450 455 214 |
| Environmental Services: | env.health@scams.gov.uk | 03450 450 063 |
| Fraud: | fraud@scams.gov.uk | 03450 450 061 |
| Housing: | duty.housing@scams.gov.uk | 03450 450 051 |
| Planning: | planning@greatercambridgeplanning.org | 03450 455 215 |
| Revenues: | revenues@scams.gov.uk | 03450 450 064 |
| Rents: | rents@scams.gov.uk | 03450 455 216 |
| For all other enquiries: | scdc@scams.gov.uk | 03450 450 500 |

Write

South Cambridgeshire District Council, South Cambridgeshire Hall, Cambourne Business Park, Cambourne, Cambridge, CB23 6EA

To make a payment

- Visit www.scams.gov.uk and click on the 'Pay for it' button
- Call our automated payment line on 03450 455 218

You can also pay using a payment card at any Post Office or Pay Point outlet.

To request a Direct Debit form or a Post Office payment card, call 03450 450 064.

Putting residents first

If you phone us we will

- resolve your enquiry as quickly as possible
- provide voicemail if the person you need is unavailable
- answer your phone message within three working days

If you write to us we will

- reply to your letter or email within 10 working days

If we write to you we will

- write in plain language
- arrange for translation, large type, braille or audio tapes upon request

If we visit you we will

- carry identification that you can check with a phone call to our contact service on 03450 450 500
- arrive at the time we say we will, or give you as much notice as possible if we have to change the time

If we get it wrong we will

- apologise if we have made a mistake or failed to meet our standards
- acknowledge your written complaint within three working days
- reply in full to your complaint within 10 working days

Tell us how we're doing

We're proud of what we are trying to achieve and recognise we can always do better. To help improve our services, we need your feedback. Whether it's a compliment, a general comment or a complaint, we want to hear from you.

www.scams.gov.uk/contact-us

Support is available if you need to **self-isolate** due to Coronavirus



Financial support

If you lose income because you or your child are self-isolating, then you could be eligible for a grant payment of up to £500, that you do not have to pay back. There are several schemes, administered by South Cambridgeshire District Council and Cambridgeshire County Council, which provide these grant payments. They entitle people facing financial hardship while self-isolating to a payment of up to £500. The financial support includes help for people who have lost income due to needing to care for someone who is self-isolating.

Whatever your circumstances, please get in touch. You can check criteria for all the self-isolation financial support schemes and apply for a payment by visiting www.scams.gov.uk/isolation or call 03450 450 500 if you're not online.



Practical support

There is a network of well organised community support groups across South Cambridgeshire. Your local group would be pleased to help you with a range of practical tasks. This includes dropping-off shopping, collecting prescriptions from the pharmacy, dog walking or even just having a conversation so you don't feel lonely. You can find your local support group by visiting www.scams.gov.uk/coronavirus/i-need-help or by calling 03450 455 063 if you're not online.

For more information, visit www.nhs.uk/coronavirus and www.scams.gov.uk/coronavirus

Support for people added to the Clinically Extremely Vulnerable list

In February a number of people were added to the Clinically Extremely Vulnerable (CEV) list, and advised to stay at home apart from to exercise or attend health appointments, due to an increased risk of serious disease from Covid-19. This includes not going out to work.

All people on the CEV list are now being asked to shield until the end of March. Along with those who may have been shielding at home since the first lockdown, we wanted to make sure any

residents newly identified as CEV know how to find support to help you stay at home.

The Government will have contacted these individuals in February, who should also have just received a letter from us and the County Council with information about local support that is available to help you to shield at home.

Please also visit our website for information on accessing priority supermarket slots, asking local volunteers to help with collecting medicines, and other tasks such as walking the dog.

www.scams.gov.uk/coronavirus/i-need-help





FIRST CARE HOMES
WHERE CARE COMES FIRST

THE CAMBRIDGESHIRE CARE HOME

Dementia, Residential and Nursing Care

The Cambridgeshire Care Home situated in Great Shelford is the premier choice for a boutique care home in historic Cambridge.

With a dedication to providing unrivalled care for each of our residents. We have introduced the latest technology with our large screen Yeti tablet and OMI interactive dementia table. Complimenting our PIR lighting sensory falls reduction equipment and person-centred electronic care plan system linked to every team member's smart phone. With this in place alongside our devoted care team we aim to provide the highest standards of wellbeing available.

Through these challenging times we recognise that care and support is more important than ever before. At The Cambridgeshire Care Home we have embraced this different world by offering a variety of contact for our residents with their loved ones by using a number of devices, iPad, Yeti Tablet, mobile phones and garden visits.

With easy access from the M11 the home situated just three miles south of the city centre The Cambridgeshire Care Home is a must visit when looking towards the next steps with your loved one.

Freephone 0808 1969750

- Dementia, Residential & Nursing Care
- State of the Art Facilities
- Boutique Premium Rooms with SKY+
- Bistro & Private Dining
- Hospitality Service with Every Meal
- Beautifully Landscaped Gardens with Scenic Lift
- All Inclusive Package Featuring;
 - Internet / Wi-Fi / SKY+
 - Telephone Calls
 - Communal Newspapers
 - Hairdressing, Nail Treatments & Chiropody
- Regular Themed Events / Entertainment
- Weekly Wellbeing Classes & film screenings in our Cinema

To find out more about The Cambridgeshire Care Home, contact Yvonne Quigley, Customer Relations Manager

176-178 CAMBRIDGE ROAD, GREAT SHELFORD, CAMBRIDGE CB22 5JU
ENQUIRIES@CAMBRIDGESHIRECAREHOME.CO.UK

Do you need support you can access without using the Internet?



There may be information and support that you feel unable to access at the moment because many organisations are closed to in-person visits. We hope the information on this page is useful but please remember, if the information you need isn't listed below, you can call our community support team.

Just let them know that you do not wish to use the Internet or do not have access to do so, and they will find an alternative way to help you. If no-one answers, please leave a message. The answering machine is checked daily.

📞 01954 713 398 (during normal office hours)

Supermarket shopping deliveries – order over the phone

If you are elderly or vulnerable or are self-isolating, and you live within 10 miles of a **Morrisons** supermarket, you will be able to place orders over the phone to have your shopping delivered to your home.

- If you order before 5pm your delivery can be made the following day, arriving between 10am and 6pm
- Telephone **0345 611 6111** and then select **option 5** to place your order
- Pay for delivery on your doorstep, using a contactless card or chip and pin. Cash payments are not accepted
- Choose from any products in store, with a few exceptions.

Every effort is made to match any replacement items to your preferences, but if this isn't possible, the person delivering your order will explain any replacement items that are available, and you can then refuse any items which you do not want, and you won't be charged for these.

Delivery costs

- Elderly and vulnerable residents: an optional £1.50 delivery contribution can be made
- Students: a discounted £2 charge is in place
- Standard charge: £4.50.

If you would like to use a service like this but do not live within 10 miles of a Morrisons store, please telephone our community support team who will try to find alternative solutions for you.



Cambridgeshire County Council's Online Directory

There are many organisations dedicated to supporting residents in other areas of day to day life. Some of the key organisations' contact details are below.

- **Age UK** provides support for older people, including on discharge from hospital. Call 0300 666 9860
- **Care Network** has a Rapid Response Service providing a range of support and remote wellbeing activities. Call 01223 714 433
- **Alzheimer's Society** offers support for people living with dementia. Call 0333 150 3456
- **Caring Together** - for carers needing support. Call 0345 241 0954
- **Cambridgeshire Deaf Association** - support for those who are hard of hearing. Call 01223 246 237. Text 07429 231 230
- **Camsight** - support for individuals with reduced vision or blindness. Call 01223 420 033
- **Silverline** - supports people over 55. Call 0800 470 8090

Mental health support

- **Choices Counselling.** For people affected by childhood sexual abuse. Call 01223 358 149
- **Richmond Fellowship.** For employment support. Call 01223 301 032
- **Lifecraft/Lifeline.** For mental health support. Call 0808 808 2121
- **CPSL MIND.** For better mental health. Call 0300 303 4363
- **Making Space.** For carers of people with mental health conditions. Call 01480 211 006.



Starting your journey towards greener motoring?

On Point specialises in the installation of state of the art **domestic and commercial car charging points.**

Visit www.onpoint-electrical.co.uk or call us for a quote.



Contact

enquiries@onpoint-electrical.co.uk
01954 781952

"The installation was very straightforward, thanks to On Point. Great advice and a fantastic job."

- Mark, Peterborough

Scan for our brochure!



WHAT A DIFFERENCE A DAY MAKES

"It's the best home improvement we have ever made. Our conservatory is now our dining room in the garden."

Mike Millis,
Middleton On Sea

SUBSIDIES AVAILABLE

*Quote Ref SCB0421

There are many reasons to change your conservatory roof with Green Space UK



INSTALLED IN 1 DAY

"What a difference a day makes as the saying goes, and yes, that's all it took to install."

Mr & Mrs Barber, Wells

WARMER IN WINTER

"There is no doubt that the conservatory is much warmer than previously, and no, the room is not darker either!"

David Birch, Chichester

USABLE ALL YEAR ROUND

"The conservatory is now used throughout all seasons of the year and is far more comfortable to sit in whatever the weather outside."

Mr & Mrs Gibson, Portishead

MOULD & CONDENSATION

"This is the best thing we have done in this house. Used to run with condensation and now zero."

Karen Thomas, Chippenham

COOLER IN SUMMER

"You could have fried an egg on the table in there in the summer, I now look upon the conservatory as a new room. It is quiet, restful and cosy."

Carol Doyle, Surrey

REDUCES ENERGY BILLS

"I've already turned the underfloor heating down. Lovely job guys, thank you!"

Anne Bird, Bristol

QUIETER IN BAD WEATHER

"For the first time in 10 years we do not have to close the door to the conservatory when it rains, as the noise is minimal and before I found it difficult to hear the TV over the loudness of the rain on the old roof."

Mr & Mrs Bailey-Webb, Warsash

CONTACT-FREE

We can offer **contact-free** installations, and perform these in less than a day!



All aspects of
Tree Surgery &
Woodland management

Free estimates

01763 208 361
07743 406 569

shelfordtreeservice.co.uk

**FULLY FITTED
ROLLER
GARAGE
DOORS**

FROM **£895** WAS **£1,354**
INC VAT

* Offer valid for openings up to 2.4m wide & 2m high. Excludes Cornwall, Devon White Walls, Internal Manual Override



WHATS INCLUDED:

ACOUSTIC & THERMAL INSULATION

TWO REMOTE CONTROLS

EXPERT MEASURING & FITTING

24 COLOURS AVAILABLE

Made To Measure...
ROLLER GARAGE DOORS

Garolla can save a lot of space inside your garage. Rolls up vertically into a box. Takes only 8 inches of head-room! Opens vertically so you can park up close to the door. Remotely open/close the garage even from inside your car.

CALL US TODAY

Phone: **01223 902 355**

Mobile: **07537 149 128**



Get a price for your conservatory roof

0800 08 03 202
www.greenspaceconservatories.co.uk



*Finance subject to status, T&C's apply. Subsidies are limited by area and not guaranteed. Putting off your enquiry could reduce the potential subsidy available to you

Winter grant funding helps local children get online

In December the Council granted £5,000 to Cambridge Online, a long-established digital charity, to provide children with data packages and devices to help them access remote learning and keep up with school work.

Funding was provided to the Council as part of the Government's Winter Support Grant, which the Council chose to

ring-fence some of to help children to access online education. Cllr Bill Handley (pictured), our Lead Cabinet Member for Community Resilience, Health and Wellbeing, said: "We were especially pleased to be able to help 35 families by mid-February, where children were falling behind in their education because they didn't have access to online learning."

If your child would benefit from data or a device to access remote learning, please do contact Cambridge Online and mention the South Cambs Winter Support Grant.

✉ help@cambridgeonline.org.uk

📞 01223 300 407



Support local businesses

Tell us how you feel about returning to the High Street after lockdown.

As we emerged from the first national lockdown last summer, we conducted two surveys to find out how residents and businesses were feeling about returning to the High Street.

We wanted to find out whether people were worried and, if so, what their primary concerns were and what businesses could do to help them to feel safer to return to the High Street. We also wanted to find out from businesses what support they needed to implement the guidelines to become COVID-secure, so that they could keep on trading.

We know now a lot more about how the virus is spread, and we are more used to keeping a safe distance from other shoppers and using hand sanitiser regularly when out.

We also have new variants that are more transmissible, face coverings are now mandatory and there's a new focus on keeping indoor spaces well ventilated.

Please complete our two new surveys – one for residents and one for businesses.



64 per cent of residents were worried about other customers maintaining social distancing. We worked with businesses to focus on ensuring they had good measures in place, for example limiting the number of customers in store and providing floor markers to use for queues.



40 per cent of businesses told us that business support packs would be useful. We have been providing packs with posters, floor stickers, information leaflets and table talkers as part of our High Street visits and through the post.

👉 www.scambs.gov.uk/COVIDsurveys

The more you can tell us, the better we can support businesses to keep everyone as safe as possible.

If you are a local business seeking support to reopen, you can also email the team.

✉ reopening@scambs.gov.uk



This project is receiving funding from the England European Regional Development Fund (ERDF) as part of the European Structural and Investment Funds Growth Programme 2014-2020.

MAKE A FRESH START THIS SPRING

Choose Independent Living in Cambridge

Thinking of moving home because of life changes or perhaps simply looking to downsize? Why not find out more about the luxury independent living apartments at Mill View, Hauxton and Warburton House, Ninewells – exclusively for the over 55s.



MILL VIEW

St Edmunds Way, Hauxton, Cambridge CB22 5GA
www.mill-view.co.uk

Independent living apartments for sale and rent with care and support services. They are available to buy or rent and designed to help you maintain your independence.



WARBURTON HOUSE
VAWSER WAY | CAMBRIDGE

Vawser Way, Cambridge CB2 0AS
www.warburton-house.com

Independent living apartments for sale. These luxury, self-contained apartments within a complex offering fantastic facilities are exclusively for sale for those aged 55 and over.

Mill View & Warburton House are available to view virtually, but if you would like to view in person, please contact

Janet Bennett on **01223 606646** or email sales@domovohomes.co.uk

Selling agents:



domovohomes.co.uk

Developments by:



bpha.org.uk

COVID-19 Safety Guidelines:

VIEWINGS ARE LIMITED AND STRICTLY BY APPOINTMENT ONLY

For everyone's safety please ensure you:



Do you need some improvements to cope better at home?

If you've recently started to claim Universal Credit, Guaranteed Pension Credit or other income-related benefits, you may be entitled to a grant to help with the costs of adapting your home. This could be adaptations to aid your physical needs, to complete major repairs or to improve your home's energy efficiency.

Have your care or support needs changed? Has spending more time at home shown you that there are improvements that can be made to help you cope better? Perhaps you know someone who is struggling at home and who needs an adaptation? Or someone whose boiler isn't working as it should, or whose doors are drafty and cold?

So far this financial year, Cambs Home Improvement Agency has invested £600,000 to help improve South Cambridgeshire residents' homes. As a Council service, you can be reassured that any work undertaken will be completed safely during the pandemic.

✉ hia@cambshia.org 📞 01954 713330 🌐 Cambs HIA



Help is available if you will struggle to pay your Council Tax or rent

What is Council Tax used for?

The District Council collects Council Tax from residents on behalf of a number of other local authorities, including Cambridgeshire County Council, the Police and Cambridgeshire Fire and Rescue Service. It provides all of these authorities with funding to run essential services, from bin collections to social care and much more.

Help with your Council Tax

If you are responsible for paying Council Tax for the property you live in but you will struggle to pay, you may be eligible for Council Tax Support, which can reduce the amount of Council Tax you are asked to pay.

Even those who are employed or self-employed could qualify.

👉 www.scams.gov.uk/apply

Help with your rent

If you receive Housing Benefit (or the housing element within Universal Credit), and the amount you receive does not cover your full rent, you may be eligible for our Discretionary Housing Payment scheme to help with your rent.

👉 www.scams.gov.uk/benefits

How to pay your Council Tax

• You can pay by Direct Debit on the 8th or the 23rd of each month. Set up a Direct Debit over the phone (call 0345 045 0064), or complete our online form: www.scams.gov.uk/pay-council-tax

- You can pay by Debit or Credit Card using our 24 hour payment line: 0345 045 5218. Please have your account number and payment card to hand
- You can pay online: www.scams.gov.uk/pay-council-tax
- You can pay by Bank Transfer. Our account details will be on your Council Tax bill, and you will need to quote your Council Tax account number
- You can pay at a Post Office or PayPoint. Allow at least three working days for the payment to reach us. You can use the bar code provided on your Council Tax Bill.

Christmas dinners delivered

On Wednesday 23 December volunteers from our Sustainable Communities team were out on one of the wettest days of the year delivering Christmas dinners to 900 residents who might otherwise have gone without on Christmas Day.

Thanks to funding from the Government's Winter Support Grant, C3 Church was able to buy the ingredients for the 900 meals.

The team of chefs at the church was paid for 50 per cent of their time, and donated the other 50 per cent of their time to peel, chop, stuff, prepare and cook the ingredients, creating individual Christmas dinner servings which were then frozen ready for transportation across the district.

Council staff (pictured) collected the 900 meals to distribute to 41 villages with the help of the local volunteer groups in each village, who transported the meals from the local delivery point to residents' homes. 122 of the meals were for families with children under 18, and the rest were given to older residents who may not have made a Christmas dinner for themselves.

All the produce was sourced locally, with three of the four major providers being companies based in the district, so the scheme

has benefitted those businesses and their employees as well as local residents. Thanks to Kale & Damson from Papworth, for providing the vegetables; Cambridge City-based Malloy's Craft Butchery, which supplied the turkey and pigs in blankets; Big Happy Thoughts from Linton, a local cake company which provided individual chocolate Yule logs for dessert; and freezer van hire Alley Cat Rentals, based in Babraham, for providing the chilled transportation.

Becky Campbell, Development Manager for C3 Impact, said: "It was a privilege to be involved in the Christmas meal scheme. It would not have been possible without the fantastic volunteers, hardworking staff and brilliant local suppliers. Together we achieved an incredible feat and our hope was that this helped to bring some of the wonder of Christmas into people's homes; to bring joy to what has been a difficult year for so many."

“ Thank you for my Christmas dinner. I felt very spoilt and undeserving. Your department, the C3 Church and those who delivered the meals are special people. For me, though I can cook, being on my own this year I wasn't going to bother as I didn't feel at all festive, so having a meal cooked for me and brought to me by someone whose smile reached his eyes meant a great deal. In fact, it brought tears to my eyes, and many happy memories of being with my husband when he was alive, plus thoughts of my family around the world and friends here in the UK who I couldn't see. ”



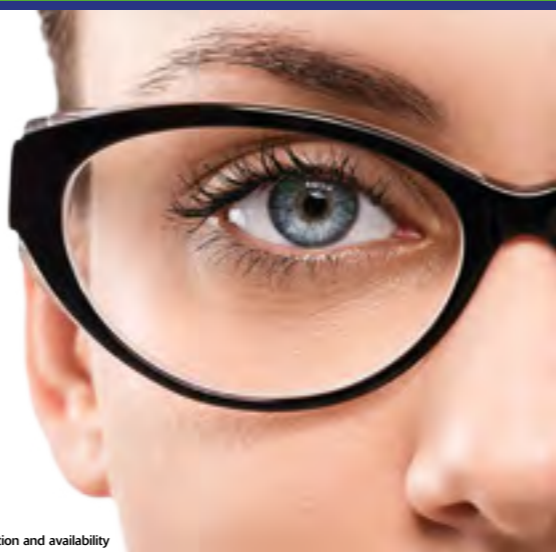
“ A BIG THANK YOU to EVERYONE concerned with the Christmas meal. The food was delicious, well-presented, comprehensive, generous portions and cheerfully delivered in the dark and pouring rain. ”

Paying too much for your glasses?

Save Money - Buy Direct!

Visit our factory shop to see our fabulous range of Discount Prescription Eyewear

- Hundreds of frames to choose from, including designer frames from Ray-Ban, Polo Ralph Lauren, Oakley, PRADA, Ted Baker and Versace
- Specialists in high and complex prescriptions
- Same-day or next-day service available*
- Save up to 75%
- Huge range of designer sunglasses
- Full range of sports eyewear



Official stockists

*subject to prescription and availability



We are open 9am to 5pm Monday to Friday, and 9am to 1pm Saturday



Call us

01954 231545 www.all-eyes.co.uk

Visit our website

20 Norman Way Industrial Park, Over, Cambridge CB24 5QE

No painting or repairs for 25 years? It must be a ColourFence!



LOW MAINTENANCE STEEL FENCING

- Guaranteed for 25 years*. Will not warp, crack or peel.
- Virtually maintenance free. No painting or treating required.
- Will withstand wind gusts of up to 130mph.
- No risk professional installation. Quoted and fitted by local experts.

We're still quoting and operating within government guidelines

CALL NOW!

To receive your **FREE** no-obligation quote

01223 811160

colourfencecambs.co.uk

MADE IN BRITAIN



*T&C's apply, see website for details.

Waterbeach Lodge First Class Residential Care

Scimitar Care Hotels is dedicated to providing a superior lifestyle of comfort, happiness and independence that redefines the perception of residential care for the elderly. Our quality and standard of service really do make a difference to our residents' lives.

- En-Suite Facilities
- Private Telephone & Television
- Nurse Call Facilities
- 24 Hour Care
- Fully Licensed Bar
- Passenger Lifts
- All Meals Freshly Prepared
- Short or Long Term or Day Care
- Single Occupancy Rooms
- Personal Laundry Service

Scimitar Care Hotels provides long and short-term care and day care so that carers can take a break.

SCIMITAR CARE HOTELS PLC

Waterbeach Lodge | Ely Road
Waterbeach CB25 9NW | **01223 862 576**
WaterbeachLodge@ScimitarCare.co.uk



Tools and funding to make your community safer

Have you ever wished somebody would do something about a littering problem in your village?

Or support your vulnerable neighbours at risk of door-to-door scams, help fix a littering problem or address an issue about unsociable behaviour?

South Cambridgeshire Community Safety Partnership can help you to make your village safer

The Community Safety Partnership between South Cambridgeshire District Council, Cambridgeshire County Council, the Police, Cambridgeshire Fire and Rescue Service, the NHS and the Probation Service meets together to tackle local crime and anti-social behaviour.

Cllr Bill Handley, Lead Cabinet Member for Community Resilience, Health and Wellbeing, said: "As part of this work, the Community Safety Partnership wants to encourage residents to take ownership of some of these local issues to create local solutions – and there is funding and support available to help you do this."

Community Safety Partnership funding

Grants of between £50 and £500 are currently available to improve community safety – and the deadline to apply is 30 September 2021.

Voluntary groups, charities, parish councils and enthusiastic individuals can apply for funding for anything from printing leaflets or posters; hosting a website;

buying equipment, such as for a Speedwatch group, litter picking, or creating a community garden; or accessing training, such as on how to tackle local anti-social behaviour.

➔ www.scams.gov.uk/CSP



Building community resilience to scams

Sadly, criminals have exploited the pandemic to con people into providing their bank details or other personal information. Common scams during this time have related to testing for Covid-19, accessing the vaccination or Covid grant payments.

Please remind anyone who is vulnerable that there will never be a charge for either testing or vaccination via the NHS.

You could apply to the Community Safety Partnership for funding to help you communicate with vulnerable residents about any current or future scams that arise

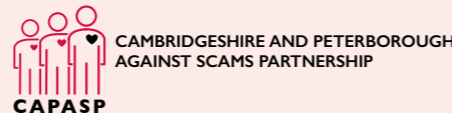
during the pandemic. You could take on the challenge of making sure vulnerable residents know how to spot possible scams, how to avoid them, and what to do if they think they may have been scammed. Could someone in your village take on the role of raising awareness of this issue and building community resilience to scams, and the financial and emotional harm that they cause?

One way to start this work might be by joining up as a supporter of the Cambridgeshire and Peterborough Against Scams Partnership (CAPASP), which provides

supporters with regular updates to help them in their efforts to help protect vulnerable residents, as well as content to share via social media, e-newsletters, posters, leaflets and more.

Find out more at the CAPASP website, and remember that costs associated with getting the message out could be eligible for funding through our Community Safety Partnership grants above.

➔ www.cambridgeshire.gov.uk/against-scams



LGBTQ+ History Month at the Council

In February the Council marked LGBTQ+ History Month with a full programme which included online events, recommended reading, profiles on key characters in the community's history, and suggested TedTalks, TV series and films to watch.

Highlights

The four-week programme kicked off with some guidance on what LGBTQ+ stands for, introducing some of the terms that would be regularly featured throughout the programme. This explanation, along with all the other resources from the month, is still available online and everyone is welcome to find out more.

➔ www.scams.gov.uk/lgbtq-history-month

Live events

The first live event offered A brief history of the UK's LGBTQ+ rights, with Morgan Page. The main event in week two was a webinar titled Mythbuster and allyship with the LGBTQ+ community, with Morwan Osman and Zainabb Hull. Week three's live event unpacked Section 28 and its legacy, with Bethan Rees and David Lynch. The final live event of the programme was a talk about Intersectionality as a means to social justice, with riham sheble.

For many these were new topics to cover. If you would like to better understand some of the experiences people in the LGBTQ+ community commonly face, as well as some of the best ways to support family, friends or colleagues, you can watch these events back on our website.

Recommendations

If watching something on TV suits you better than webinars, there is plenty to choose from in the programme – with everything from the latest hits like It's a Sin on Channel 4, to classic films like Philadelphia and Dallas Buyers Club, and much more.

Cllr Bridget Smith, Leader of the Council, said:

"The live events during the month were incredibly useful in helping attendees to better understand some of the experiences that affect people on a daily basis, as well as providing tips for how to be proactive in making sure we are not accidentally harming others. I'm especially grateful to our guest speakers and to Encompass Network for partnering with us to host the programme."

Last chance: apply now for Community Chest funding

The Council has funded the Community Chest scheme since 2011, handing out more than £550,000 in grants to local good causes in that time. As a rolling scheme, there is money available every year for non-profit groups in South Cambridgeshire to fund projects that benefit the district's residents.

The deadline to apply for funding for the current year (April 2020 to March 2021) is 31 March 2021, and there is £40,000 still available

to eligible groups, which could receive up to £1,000 per project.

Even if you don't currently have a group established, it is possible for the funding to be used to cover set up costs for new groups – from training to insurance, and licences to equipment. So if there is a need that you have identified in your community that you would like to meet and would be able to if you had some funding, please contact our team for guidance or apply online before the deadline.

Established groups can also apply for funding, as long as you haven't already received Community Chest funding in the current year. The funding could be used for improvements or repairs to community buildings, to install a local monument, or to provide equipment for sports clubs or community groups, for example.

Find more information or apply online.

➔ www.scams.gov.uk/communitychest



More than just a service



BATHROOM HEATING PLUMBING RENEWABLE



Viessmann 100-W and Grant Vortex/Blue are Which best buys for 2017, Our Choice of Boilers for Many Years, showing them as a Quality and Reliable Product as rated by the Customer and Installer. The After Sales and Support is 1st Class. All Viessmann 100-W Boilers Installed by Shelford Heating now come with a Standard 10 Year Manufacturer Warranty as of 1st May 2018.

Shelford Heating is a long established Family owned Business undertaking around 10000 jobs annually within a 20 mile radius, Specialising in service and maintenance of all types of heating whether this is fuelled by Gas, Oil, LPG, Electric and Biomass all by directly employed, manufacturer trained and Gas Safe/ OFTEC registered technicians.

We also undertake general plumbing and are pleased to offer a full design and installation service for your new bathroom from start to finish.

We are fully conversant with the design and installation of heating systems, using the latest heating controls and modern condensing boilers as well as heat pumps and biomass boilers.

Viessmann Gas Boilers and Grant Oil Boilers offer the best Product Warranties, the minimum being 7 Year for Parts and Labour (Manufacturer T&C apply) and on specific models 10 Years.

Our Commercial Gas Technicians can service and repair your heating appliances in your Business/Commercial/School premises and several of our staff have full CRB disclosure.

Our in house design team can cater for any design or application within the commercial and domestic markets for your plumbing and heating requirements including renewable systems.

We believe in quality, reliability and our reputation as market leaders is important to our business - and letters of praise from happy clients is what we strive for.

If you are a School, College, Business, Letting Agents, Commercial Premise or Private Homeowner we can help you.

As we say - More Than Just a Service.

Call 01223 833 426 • sales@shelfordheating.co.uk • shelfordheating.co.uk



Northstowe gets pedalling

To encourage active and sustainable travel 20 new eco-friendly fun-to-ride e-bikes have been funded through Northstowe's Phase 1 Travel Plan and the Healthy New Town programme.

The e-bikes are located at the Northstowe Cycle Hub at Longstanton Park and Ride and the new bike shelter near Pathfinder Primary School. Five of the e-bikes have kiddie seats and three kiddie trailers are also available.

The e-bikes are available for local people to make essential trips to work or as part of permitted exercise. The bikes are sanitised every 24 hours, although we encourage residents to do their own wipe down too.

Residents will need to bring their own cycling helmet and are encouraged to bring their own gloves. Disposable gloves are provided though if required.

The scheme operates via a mobile app and a credit system. Download the bizbike app and register for details and access. Once registered the app will then allow residents to scan the QR code to unlock the bike and start your ride.

www.cambridgeelectrictransport.co.uk/electric-bike



New community centre in the heart of Hauxton

Hauxton Parish Council, local architect's practice Cavaleri Partnership and key stakeholders have built a new community centre which sits within the Hauxton Recreation Area, close to children's play equipment and open space, which makes it ideally located for the local community.

The Parish Council carried out extensive community engagement on the design and location of the new centre to ensure the community could have its say on where the new centre should be located, and what it would offer.

The design of the building underwent planning reviews prior to a planning application being submitted in 2017. It was then

debated at the Council's Planning Committee in January 2018, before permission was granted. Cocksedge Building Contractors began construction in early 2020 and the work is now complete. Dependent on Covid restrictions, residents can now book the facility via the Parish Council's website.

It is a beautifully designed, modern building which integrates sustainable design principles and renewable sources of energy, and which suits its surroundings. The space can be used in a flexible way, with a kitchen, library, meeting space, conference room and party facilities all catered for. A café overlooks the play area, and outdoor covered seating means



people can enjoy a drink outdoors. The car park is sustainably laid out with low level lighting.

The scheme was partly funded from money secured in the legal agreement for the new housing development on the former Bayer site (this agreement is known as a Section 106 agreement), as well as other parish funds.

Twin it to win it

Now that the UK has left the European Union, and especially as we have not been able to travel across the Channel in recent months, many may be wondering how we can maintain a friendly alliance with our nearest continental neighbours.

Twinning could offer an answer.

Town Twinning started in Europe after World War II as a way to repair damaged relationships, encouraging reciprocal hospitality in each others' homes to build new relationships, focus on peace and reconciliation, and encourage trade and tourism.

More recently, twinning has expanded beyond European towns to those around the globe.

You often see signs at the entrance to villages bearing the name of a town that the village is twinned with. It can take a concerted effort by volunteers to establish these partnerships, as well as to fundraise for exchange visits and to encourage schools to get involved and pen pals to write. Amongst South Cambridgeshire's twinned villages are Great and Little Shelford. They were officially twinned with Verneuil-en-Halatte in the Oise area of Picardy, to the north of Paris, in 1988. Annual visits by both parties take place, as well as a busy social calendar in the UK to raise funds for the exchanges.

Comberton twinned with the village of Le Vaudreuil, near Rouen in France, in 1999 and has since enjoyed a number of exchanges in both directions, including 37 visitors from Le Vaudreuil to Comberton in April 2019 to celebrate the 20th anniversary.

Bourn Twinning Association is a relative newcomer, having signed its Twinning Charter with Saint-Papoul in the Languedoc Roussillon region of France in 2012.

Foxton also signed up recently, pairing with Montigny in Seine-Maritime in France, in 2016. In addition to exchange visits, French-inspired social events in the UK are regularly organised too. If your village is interested in becoming a twin, visit the Twinning Organisation's website to find out more.

➔ www.twinning.org



Foxton Twinning Association gathers at the Foxton village sign, linked with Montigny in Seine-Maritime, France



Comberton Twinning Association ready to depart on their exchange trip to Vaudreuil 2019



Bourn Twinning Association with the Mayor of Saint-Papoul

Wasting food feeds climate change

After it leaves farms, 70 per cent of all wasted food comes from our homes. Included in what is thrown away in the UK every day is:



3.1 million glasses of milk



1.2 million tomatoes



Just under 1 million bananas



Since 2005 the UK's food waste has reduced from 11.2 million tonnes to 9.5 million tonnes per year. We are moving in the right direction, but we need to keep up the good work. A national week of action to tackle food waste took place from 1 to 7 March, with councils, retailers and manufacturers working together to highlight the link between food waste and climate change.

What is the link?

When we throw away food, we also waste all the energy and resources that are associated with it. 25 to 30 per cent of greenhouse gases are created by the production of food alone.

This includes the section of land that may once have been a forest that was chopped down to make the field; the water that was used for irrigating the fields; the fertiliser used; the diesel consumed to fuel the tractors which ploughed the fields, to fuel the lorries to transport the food and, in some cases, to import the food from overseas.

We then have to produce more food (using the same resources) to replace what was thrown away, creating a constant cycle. Last year in South Cambridgeshire we threw just under 30 tonnes of edible food in our black bins every day! That's the equivalent weight of 19 cars, every day.

What we can do

As highlighted in the Food Waste Action Week campaign there are many ways we can all play our part in tackling this problem, by reducing our food waste and the impact that it has on our planet.

- **Meal planning** – plan for the week so you know the right quantities to buy.
- **Storage** – make sure you're aware of which foods should be stored in which locations; and check the 'use by' date.
- **Understand date labels** – 'Best before' refers to quality, but can be eaten after this date. 'Use by' refers to safety. Do not eat after this date.
- **Fridge temperature check** – your fridge should be less than 5°C to preserve food for longer.
- **Leftovers** – be creative to make sure you use leftovers, or simply reuse meals the next day.
- **Food banks** – donations can be made to local food banks, particularly tinned goods and even fresh food that is close to the use by date.

Find more tips on the Out of Date website.

➔ www.outofdate.org.uk

Food Hall
Fresh Fruit & Vegetables
Delicatessen
Butchery
Fishmongers

BURY LANE

Café
Gift Hall
Garden Shop
Fresh Flowers incl Home Grown

Large Free Car Park
Independent and Family Run
Open 7 Days a Week

Children's Fun Barn and Summer Beach
Seasonal Home Grown Asparagus & Strawberries
Christmas Shop (Oct-Dec)

A10 Melbourn By-Pass, Melbourn, Royston, Herts SG8 6DF
Tel: 01763 260418
Email: customerservices@ewpepper.co.uk
www.burylanefarmshop.co.uk

Arrington Garden Centre

Come and visit our friendly team for expert advice!

UK and home grown veg plants, herbs, bedding, herbaceous perennials, shrubs and trees
Large range of Mr Fothergill flower seeds
Specialist composts, mulches, garden aggregates and grits

Located directly off the A1198 near Arrington, SG8 OAG
Open 7 days a week | 01223 208194
www.arringtongardencentre.co.uk
manager@arringtongardencentre.com

ALL YOU NEED FOR YOUR GARDEN, THROUGH ALL THE SEASONS

SHIRE TREES LIMITED

shiretrees.co.uk
01763 220880
07725 808887

Professional Arborists
Hedge Maintenance
Stump Grinding
Fully Insured to £10m
All Aspects of Tree Work
24 / 7 Call Out

City & Guilds NPTC
LANTRA AWARDS APPROVED







The South Cambridge Estate Agents.

COOKE CURTIS & CO


+44 (0) 1223 508050
40 High Street
Trumpington
Cambridge CB2 9LS
www.cookecurtis.co.uk

HappiTails

Home & Pet Sitting Service

All our sitters are professional people who are fully vetted, police checked and issued with ID cards.

We serve a 30 mile radius of Cambridge.

 **01223 832604**
or email: jill.pendlebury@talktalk.net

www.happitails.co.uk

Andrew Scott
Your LOCAL OvenGleamer

Call us: 01223 750 909

OvenGleamers
The Oven Cleaning Service
www.OvenGleamers.com

Would you like to join our team of Oven Gleamers Franchisees in the Cambridgeshire area?

Just contact Andrew Scott, who is one of our existing Franchisees, by email at andrew.scott@ovengleamers.com

An OvenGleamers Franchise offers the chance for self-employment in a fast-growing and successful industry offering a fantastic service to customers who really appreciate the quality work an OvenGleamer Franchisee delivers. Very good earnings are possible entirely linked to the effort you put in. So if you have always wanted to be self-employed or maybe you are suddenly facing redundancy and are fed up with being a wage-slave, this could be the opportunity for you. As a Franchisee you set your own hours, set your own prices, manage your costs and your marketing and have the support of the Franchisor behind you if needed.

www.ovengleamers.com
Ovens | Ranges | AGAs | Hobs | Extractors | BBQs

Sterling CLEANING SERVICES

Established for over 33 years, we guarantee a professional and efficient cleaning service throughout the Cambridgeshire area.

We have an impressive track record in the cleaning industry and make sure that all work is carried out to the highest standards.

- Water-fed pole system (maximum height - minimum risk)
- Conservatories
- Gutters
- Windows
- Patios & paved areas
- Fascias
- Solar panels
- UPVC

 **01223 844 755**
@ enquiries@sterling-cs.co.uk
 www.sterling-cs.co.uk

✉ 3 Joscelynes, Stapleford, Cambridge, CB22 5EA

Bin collection calendar

Bins must be put out by 6am on your collection day. Close lids fully. Please report missed collections between 3.30pm on collection day and 3.30pm the next working day. For advice on how to leave out extra recycling for collection and other policies, see www.scams.gov.uk/bins

Green bins returned to fortnightly collections from 1 March

● Green bin ● Black bin ● Blue bin ○ Change of date

| | March | April | May | June |
|--|--------------------------------|----------------------------------|---------------------------|----------------------------------|
| MONDAY A - Balsham, Carlton, Cherry Hinton, Fulbourn, Great Wilbraham, Horseheath, Little Wilbraham, Six Mile Bottom, Stow-cum-Quy, Teversham, West Wickham, West Wrating, Weston Colville | 1 8 15 22 29 1 15 29 | 7 13 19 26 Wed 13 Tue 26 | 4 10 17 24 Tue 10 24 | 1 7 14 21 28 Tue 7 21 |
| MONDAY B - Babraham, Bartlow, Castle Camps, Great Abington, Hildersham, Linton, Little Abington, Pampisford, Sawston, Shudy Camps, Whittlesford | 1 8 15 22 29 1 8 22 29 | 7 13 19 26 7 Tue 19 | 4 10 17 24 4 Tue 17 24 | 1 7 14 21 28 1 Tue 7 14 21 28 |
| TUESDAY A - Duxford, Fowlmere, Great Chishill, Great Shelford, Harston, Hauxton, Heydon, Hinnton, Ickleton, Little Chishill, Little Shelford, Newton, South Trumpington, Stapleford, Thriplow & Heathfield | 2 9 16 23 30 2 16 30 | 8 14 20 27 Thu 14 Wed 27 | 5 11 18 25 Wed 11 25 | 2 8 15 22 29 Wed 8 22 29 |
| TUESDAY B - Barrington, Foxton, Melbourn, Meldreth, Shepreth | 2 9 16 23 30 2 9 16 23 30 | 8 14 20 27 8 Wed 20 | 5 11 18 25 5 Wed 18 25 | 2 8 15 22 29 2 Wed 8 15 22 29 |
| WEDNESDAY A - Abington Pigotts, Barton, Bassingbourn, Grantchester, Guilden Morden, Harlton, Hasingfield, Littleton, Orwell, Shingay-Cum-Wendy, Steeple Morden, Whaddon, Wimpole | 3 10 17 24 31 3 10 17 24 31 | 9 15 21 28 Fri 15 Thu 28 | 6 12 19 26 Thu 12 26 | 3 9 16 23 30 Thu 9 23 30 |
| WEDNESDAY B - Arrington, Caldecote, Comberton, Coton, Croydon, Gamlingay, Great Eversden, Hardwick, Hatley, Kingston, Little Eversden, Little Gransden, Longstowe, Madingley, Tadlow, Toft | 3 10 17 24 31 3 10 17 24 31 | 9 15 21 28 9 Thu 21 | 6 12 19 26 6 Thu 19 26 | 3 9 16 23 30 3 Thu 16 23 30 |
| THURSDAY A - Bourn, Boxworth, Cambourne, Caxton, Childerley, Conington, Croxton, Elsworth, Ettisley, Graveley, Knapwell, Papworth Everard, Papworth St Agnes | 4 11 18 25 4 11 18 25 | 1 10 16 22 29 1 Sat 16 Fri 29 | 7 13 20 27 Fri 13 27 | 4 10 17 24 Fri 10 24 |
| THURSDAY B - Bar Hill, Dry Drayton, Fen Drayton, Girton, Lolworth, Longstanton, Northstowe, Oakington, Over, Swavesey, Westwick | 4 11 18 25 4 11 18 25 | 1 10 16 22 29 1 Fri 22 29 | 7 13 20 27 7 Fri 20 27 | 4 10 17 24 4 Fri 17 24 |
| FRIDAY A - Cottenham, Histon, Impington, Landbeach, Orchard Park, Rampton, Willingham | 5 12 19 26 5 12 19 26 | 6 12 17 23 30 6 Mon 17 Sat 30 | 8 14 21 28 Sat 14 28 | 5 11 18 25 Sat 11 25 |
| FRIDAY B - Chesterton Fen, Chittering, Fen Ditton, Horningsea, Milton, Waterbeach | 5 12 19 26 5 12 19 26 | 6 12 17 23 30 6 Tue 12 Sat 30 | 8 14 21 28 8 Sat 21 28 | 5 11 18 25 5 Sat 18 25 |

Safe disposal of waste during the Coronavirus pandemic


If you have symptoms, all personal waste such as used tissues and disposable cleaning cloths must be:

1. Placed in a plastic bag and tied when full, and then placed in another plastic rubbish sack and tied
2. Stored securely, separate from other waste and communal areas, for three days
3. After three days, placed in your black bin


What goes in your blue bin?

Yes


No




Cardboard



Paper & magazines




Tins, cans & foil




Aerosol cans


Recycle ✓ Clean ✓ Empty ✓ Don't bag it




Glass bottles & jars




Cartons



Plastic pots, tubs, trays & bags



Plastic bottles



Shredded paper
(in envelope or clear sack)

Occasional extra recycling
One clear sack and/or a bundle of cardboard that would fit in an empty blue bin can be left next to your bin for collection, providing the crew has sufficient space on the round. Or order an additional blue bin for free via our website.

No

- ~~X~~ Black bin bags or rubbish
- ~~X~~ Nappies, tissues, kitchen paper, wipes & sanitary waste
- ~~X~~ Polystyrene
- ~~X~~ Glasses, flat glass or glass dishes
- ~~X~~ Mirrors, Pyrex, plates/crockery
- The following can be recycled elsewhere – check our website.
- ~~X~~ Clothing and textiles
- ~~X~~ Food, liquid or garden waste
- ~~X~~ Wood, plasterboard & DIY waste
- ~~X~~ Furniture or electricals
- ~~X~~ Scrap metal e.g. pans
- ~~X~~ Hard plastics e.g. bucket
- ~~X~~ Crisp packets

What goes in your green bin?

Yes

No



Compostables



Cooked/uncooked food waste (including meat, fish and dairy)



Untreated wood and sawdust



Garden waste


No

- ~~X~~ Plastic & plastic bags
- ~~X~~ Compostable bags e.g. Biobags
- ~~X~~ Nappies, wipes and sanitary waste
- ~~X~~ Soil or stones
- ~~X~~ Painted or treated wood
- ~~X~~ Cat or dog waste
- ~~X~~ Plant pots and seedling trays
- ~~X~~ Used paper tissues and kitchen paper (during the pandemic)

What goes in your black bin?

Yes

No



Reduce

Please try to reduce other rubbish that cannot be recycled or composted

General rubbish including nappies, wipes, sanitary waste, polystyrene, broken crockery or glassware (wrapped), tissues and kitchen paper (due to Covid19 we have changed our advice on tissues and kitchen roll used for cleaning. These should be put in your black bin at the moment).

No

- ~~X~~ Rubble/bricks
- ~~X~~ Soil
- ~~X~~ Very heavy items
- ~~X~~ Electrical items
- ~~X~~ Batteries
- Store these items to take to Household Recycling Centres at Milton or Thriplow.

Time for a spring clean?

Figures show that while most of us are spending more time at home, many have made home improvements like replacing carpets, furniture or appliances. So, what should be done with all the old ones?

Charity collections

While this is not an option during lockdown, under normal circumstances donating to charity shops is the best thing to do with unwanted furniture or appliances that are still in good working condition. There are several charities in our area, such as Emmaus and The British Heart Foundation, which can usually collect bulky items from your home.

Pass it on

During lockdown travel is allowed within your town or village to buy or collect items that you need. This means that if you have an item like a fridge or a bed, which could be essential for someone else, you could give it away or sell it locally by listing it on a localised Facebook, Gumtree, Freecycle or Freegle page, if one exists.

Household Recycling Centres (HRCs)

The HRCs are operated by Cambridgeshire County Council and remain open, so if you need to dispose of a large item, you can book a visit.

👉 www.cambridgeshire.gov.uk

The Great British Spring Clean

If you like the idea of a spring clean for nature, why not join volunteer groups around our area who will be litter-picking as part of the annual Great British Spring Clean event, which runs from 28 May to 13 June. Find out more on the Keep Britain Tidy website.

👉 www.keepbritaintidy.org



The S.C.R.A.P. code

Last year the Council spent hundreds of hours and over £50,000 on clearing up illegal fly-tips, money which could have been spent on other essential services. Follow the S.C.R.A.P. code to make sure you aren't to blame.

S: Suspect all waste carriers. Do not let them take your waste until they have proven themselves to be legitimate.

C: Check their waste carrier's registration details, then verify them by searching the Environment Agency website <https://environment.data.gov.uk/public-register/view/search-waste-carriers-brokers> or by calling 03708 506 506.

R: Refuse unexpected offers to have any rubbish taken away.

A: Ask what will happen to your rubbish and seek evidence that it is going to be disposed of appropriately.

P: Paperwork should be obtained. Make sure you get a proper invoice, waste transfer note or receipt for your waste removal.

Council bulky waste collection

We can collect most bulky items from outside your house, and it's now really easy to book a collection online. There is a high demand for collections so book a collection in advance if you can, and consider where you can store the old items if you have to wait. For more information visit our website.

👉 www.scams.gov.uk/bulky-waste

Collections from private contractors

If you are going to have your bulky items collected by a private service, please check carefully that they are properly licensed. If the items are later dumped or 'fly-tipped', you could be prosecuted, because you are legally responsible for checking you use a licensed company.



Are you a good recycler?

When it comes to recycling, quality counts.

Clothing

We know it's harder to pass clothing on to charities at the moment, but binning clothes has a huge impact and, what's more, they can't be recycled in your blue bin either. In fact, putting textiles in the blue bin causes huge problems!

Please drop off clean clothes, even if they are completely worn-out, at clothing banks (while on essential journeys, or store them in your loft, wardrobe, spare room or car until you can get out to drop them off).



Please don't put clothes into any of your bins

Dirty recycling

Make your recycling count by emptying and rinsing food and drink containers (you could use old washing up water for this). Food and drink leftovers are the biggest problem we get in our blue bins. They spoil good recycling, making paper and card soggy and dirty, and decreasing the value of the materials when we resell them, which helps to cover our costs.

Polystyrene no-no

Polystyrene packaging is not accepted as recycling. Please bag it up to prevent small pieces blowing out and becoming litter, and then put it in your black bin.

Cllr Brian Milnes, (pictured) Lead Cabinet Member for Environment and Licensing, said:

"Loads of us have made really positive behavioural changes when it comes to recycling - but there are still those slip ups that can mean that our recycling lets the side down - and could even have to be landfilled. Recycling companies want the best ingredients to transform into their new products, and we compete in a global market. We need to ensure our materials hold their value: no wrong items, and clean."



Additional recycling

If your blue bin is full, remember you can recycle more by leaving extra items (except glass) next to it in one transparent sack. Re-use clear sacks from packaging, or buy clear recycling sacks from supermarkets. If you regularly have additional recycling, you can order an additional blue bin free of charge online.

👉 www.scams.gov.uk/request-a-bin

Thank you for being a good recycler!

How clean does my recycling need to be?

Not clean enough



Clean enough



PEST PROBLEM?

LOCAL, PROFESSIONAL, TRUSTED

DRE Pest Control



Rapid, qualified and safe pest control.

Residential, farms, commercial premises, hotels, hospitals, schools & businesses.

Removal of **rats, mice, ants, fleas, cockroaches, & wasps.**

Are you looking for **one-off, emergency or long-term** pest management solutions?

Contact **DRE Pest Control** today!

07789 502556

01954 230708

drepestcontrol.co.uk
info@drepestcontrol.co.uk



19 WALLMANS LANE
SWAVESEY
CAMBRIDGE
CB24 4QY

Wheelie Fresh Bins

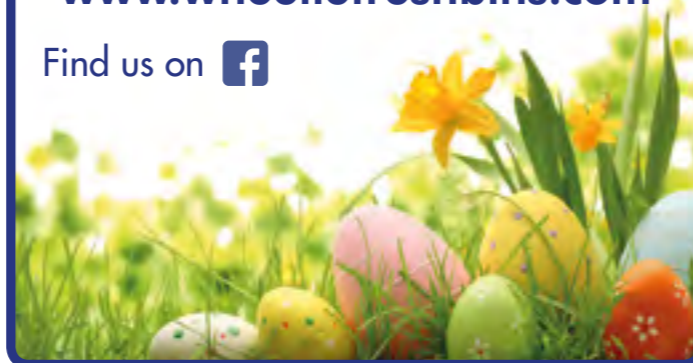
A wheelie bin cleaning service for both domestic and commercial customers.

Book a regular or one off clean.

Tel: **01223 277747**

Book online at
www.wheeliefreshbins.com

Find us on



Put your love in writing!
Covid19 - FREE Consultation by phone, email & video available

Wills & Trusts protect family assets

Lasting Powers of Attorney - look after the vulnerable

'We always meant to organise our Wills...'

Compare funeral plans, freeze costs, save worry

Tel: **01223 655 646**
www.justwillscambridge.com
info@justwillscambridge.co.uk

Just Wills Local members of...
STEP
Local office, National Company



the original
TOP
that fits on
TOP

**TIRED OF YOUR OLD KITCHEN?
DON'T START OVER, DO A MAKEOVER.**



Give your kitchen a stylish new look without going through all the disruption of ripping out your old one. Our bespoke worktops and replacement doors are made to cover existing surfaces precisely, leaving a hardwearing and luxurious finish. Our skilled team can often transform your kitchen in as little as a day.

GRANITE
transformations

**KITCHEN & BATHROOM
MAKEOVERS**

To find out more or book a free home consultation contact

CAMBRIDGE SHOWROOM: **01223 915 899**, 53 High Street, Trumpington, Cambridge CB2 9HZ

Proud members of **9.90** SCORE

granitetransformations.co.uk

New strategy to double nature on our doorstep

In February we approved a new strategy that will help to increase the number of wildlife-rich habitats, extend tree cover and improve access to green space for residents in South Cambridgeshire.

The Doubling Nature Strategy outlines how we will work with communities, partners and businesses to protect and enhance the district's natural capital, as well as taking action on the land we own. We want to:

- give nature space, and help to reverse declines in habitat and species
- provide more areas for people to enjoy nature, a benefit for health and wellbeing
- improve air quality
- help manage water (more on this below)
- create more resilience to climate change.

Cllr Pippa Heylings, Chair of the Climate and Environment Advisory Committee (pictured), said:

“South Cambridgeshire is one of the fastest growing areas in the country and yet is one of the poorest in terms of biodiversity. The challenge to balance economic growth with measures to protect and enhance nature has never been more urgent.”

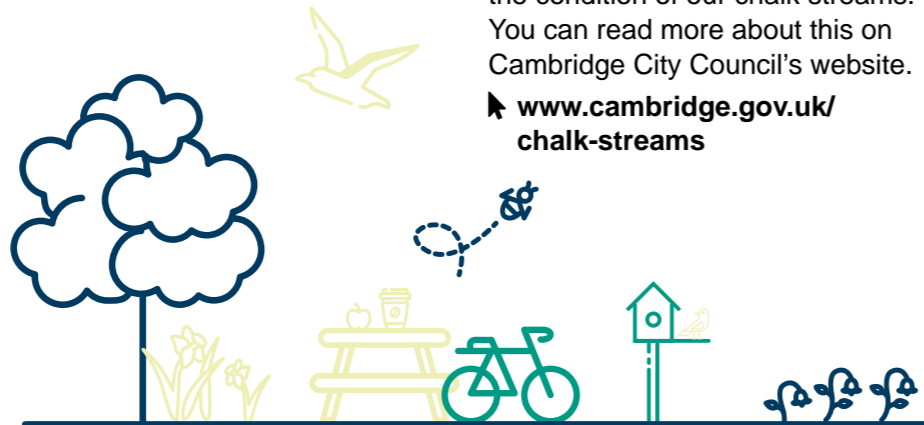


The Council already has tree planting schemes and nature enhancing measures under way, including a tree audit to map every tree on communal land in our housing areas, and identify opportunities to reseed suitable green spaces with wildflowers. We will also support residents and communities to do more for nature, such as through grants programmes and the volunteer Tree Warden network.

As the local planning authority, our aspiration is to achieve a 20 per cent biodiversity net gain on all developments in the district. We are working on new planning policies for nature and meanwhile developing guidance to make more of our existing ones, and encouraging partners to step up for nature right away.

Read the new Doubling Nature Strategy in full on our website.

➔ www.scambs.gov.uk/doublingnaturestrategy



This new Doubling Nature Strategy complements our recently approved Zero Carbon Strategy, which sets out how we are supporting efforts to halve net carbon emissions in the district by 2030 and reduce them to zero by 2050.

Chalk streams

Helping manage water for nature is a key component of the new Doubling Nature Strategy and the Council is working with Cambridge City Council and other partners to understand the issues affecting chalk streams in Greater Cambridge and what needs to be done about them.

A recent report covers the health of the 17 main watercourses that emerge from the chalk aquifer. Chalk streams are internationally rare habitats, providing homes for species such as brown trout and water vole.

The report is an important step forward in ensuring we understand the condition of our chalk streams. You can read more about this on Cambridge City Council's website.

➔ www.cambridge.gov.uk/chalk-streams

An innovation centre with added **POSITIVE IMPACT**

Looking for your team's new home? Or space to co-work?

Whether you need a fully serviced office, a flexible space to co-work, a virtual office business address or event and meeting rooms, we've got you covered.



We're proud to be different to other business centres. Our Future Business Centre is a community for start-ups and companies that focus on creating social and environmental

change. Come and join our community – a space for future focused businesses to thrive.

Fancy a tour? Drop us an email or give us a call, you'll be very welcome.



Allia Future Business Centre
King's Hedges Road, Cambridge CB4 2HY
01223 781200 | hello@futurebusinesscentre.co.uk | www.futurebusinesscentre.co.uk

20 Reasons to Choose HomeXperts to Sell or Let your Property

Get your Free Valuation today
Call John on 07455 384417



John Burkill

T: 01223 656606

M: 07455 384417

E: cambridgesouth@hxea.co.uk

www.homexpertsuk.com/estateagentcambridgesouth

1. No sole agency agreement
2. Accurate appraisals
3. Realistic valuations
4. Expert local knowledge
5. Honest advice
6. Extensive property advertising
7. Reliable and friendly service
8. Stunning photography
9. Passionate about property
10. Longer viewing hours
11. Outstanding customer service
12. Fully qualified
13. Accompanied viewings
14. Constant communication
15. Maximum property exposure
16. Proactive approach
17. Constructive feedback
18. Exceed expectations
19. We grow our business by referrals
20. Open evenings and weekends

HomeXperts[®]
Exceptional Estate & Letting Agents

Who is responsible for local water management?

Protect your home from flooding (in advance, such as by buying sandbags or floodgates)

What are the different types of flooding?

Surface water (pluvial) flooding:

This is when there is so much rainwater that it overwhelms existing drainage systems. It's more prevalent in towns and villages than in the countryside, because concrete and tarmac prevents rainwater from soaking into the ground. Surface water flooding can trigger sewer flooding, where sewage escapes from manhole covers, drains or even backs up into toilets, baths and sinks. This can be caused by pipe blockages or by the sewer being too small to deal with the heavy flow.

The type of flooding experienced in South Cambridgeshire in recent months will have been a combination of surface water and groundwater flooding. This followed the third largest rainfall event through October to January since records began in 1850.



River and coastal (fluvial) flooding:

This is when rivers and streams overflow and burst their banks due to being unable to carry away the floodwaters from intense rainfall via the usual drainage channels. Nearby low-lying properties and land are then vulnerable to flooding. Coastal flooding is caused by high tides and/ or severe weather breaching sea defences and flooding inland.

Groundwater flooding: This is different to surface water flooding because it is caused by rainwater filling up underlying aquifers to the point of overflowing, usually in winter. This then causes groundwater flooding from springs and winterbournes (streams which are dry in summer) to inundate roads and overwhelm drainage systems.

What are watercourses?

A watercourse is any river, stream, brook, ditch, drain, culvert, pipe or any other passage through which water flows. It could be pipes under the ground, or natural routes. It does not include sewers.

Watercourses drain the land, prevent flooding and help support flora and fauna, taking water run-off away from buildings and roads, fields and parks. This may be culverted (piped) in built-up areas, and these will often be empty in the summer months but much fuller in heavy rain.

Main river or ordinary watercourse?

Main rivers are usually a larger stream or river. Locally important smaller watercourses can also be designated as main rivers. The Environment Agency has authority, powers, rights and responsibilities for managing main rivers in England and Wales. A flood map detailing their locations can be found at:

www.environment-agency.gov.uk

Ordinary watercourses are any other river, stream, ditch or culvert not defined as a main river. The responsibility for maintaining ordinary watercourses lies with anyone who owns land or property adjacent to the watercourse. This is known as Riparian Ownership.



The Environment Agency is able to predict some time in advance the likelihood of river or groundwater flooding – and you can find out if you are at risk at any given time by calling Floodline on 0845 988 1188 or visiting the Environment Agency's website at: www.environment-agency.gov.uk/flood You can also sign up for alerts based on your address.

Could you be a Riparian Owner, and not know it?

If there is a watercourse on, next to or under a property you own, then you could be a Riparian Owner. The deeds for your property or land may tell you if this is the case. However, even if your deeds do not say you are responsible for an adjacent watercourse, the law will assume you are. Waiver of responsibility only applies where a title deed states specifically that you are not responsible. This means you are responsible for its maintenance to ensure it flows freely without obstruction, pollution or diversion, and you should also maintain your side of the riverbank. If you are a tenant, responsibilities usually sit with the owner; but it



is worth checking your tenancy agreement. Find out more at: www.gov.uk/guidance/owning-a-watercourse#find-out-if-you-own-a-watercourse

What to report to who

Overflowing water pipes, sewers and manhole covers: Anglian Water covers most of the county for sewage and water supply, so check their website for information on reporting overflowing pipes, sewers and manhole covers: www.anglianwater.co.uk/help-and-advice/sewage-flooding/ Cambridge Water supplies water to some of the district, so it may be worth checking their website too: www.cambridge-water.co.uk/household/my-water-supply/flooding

Flooding from surface water, groundwater or ordinary watercourses: Visit our website for information about how to:

- protect your home from flooding (in advance, such as by buying sandbags or floodgates);
- act early if flooding occurs – move your car to higher ground, tune into local news for updates, turn off mains power and water, put sandbags in toilet bowls, pack essential items like medicine, and empty freezers and refrigerators if you can, leaving doors open;
- and call the emergency services if there is an imminent risk to property or people.

Find out more at: www.scambs.gov.uk/flooding

Flooded roads and pavements:

Cambridgeshire County Council is the authority to report flooded roads and pavements to, and you can also report issues such as external flooding to gardens or paths, or where you have already experienced flooding within the living space of your home (not outbuildings). Find out more at: www.cambridgeshire.gov.uk/business/planning-and-development/flood-and-water

Emergency Services: The Police can help with the evacuation of people from their homes where necessary. They also co-ordinate emergency services in a major flood incident. Contact 999 only in an emergency.

Fire and Rescue: Fire and Rescue may pump out flood water. Contact your relevant fire station for details. There may be a charge for assisting the public with personnel and/or equipment where a need is identified. Contact 999 only in an emergency.

Cambridgeshire Highways: Cambridgeshire Highways organises road closures and diversions due to flooding. They also place flood warning signs on roads and clear blockages on highways drainage systems. You can contact 0345 045 5212 or the Police out-of-hours.




Walking in nature

As so many people have appreciated during the last year, outdoor space with access to nature and wildlife is essential for wellbeing.

The Wildlife Trusts in Cambridgeshire share some of their recommendations for local nature reserves

Research carried out between The Wildlife Trusts and the University of Essex has shown that the health and wellbeing benefits from nature include improvements to physical health – through increased physical activity – as well as improvements to psychological and social wellbeing.

This includes:

-  reductions in stress and anxiety
-  increases in positive mood, self-esteem and resilience
-  improvements in social functioning and social inclusion.

To help everyone to take advantage of local outdoor spaces (whenever Covid restrictions allow), we asked The Wildlife Trusts in Cambridgeshire to share some of their recommendations for local nature reserves.



Beechwoods

For tranquil, contemplative woodlands, the majestic Beechwoods nature reserve, as the name suggests, comprises large elegant beech trees, the majority of which were planted in the 1840s.

Located on Worts' Causeway, this is a favourite of Cambridge-based author Robert Macfarlane, whose book *The Wild Places* begins and ends here. In spring, before the beech leaves cast a deep, cool shade, delicate white helleborine orchids thrive on the dry chalky soil under the beech trees, and other woodland flowers start to emerge.

Trumpington Meadows

For a feast of flowers the Trusts' reserve at Trumpington Meadows now has one of the largest areas of new wildflower meadows in Cambridgeshire, and is a place where wildlife is flourishing for local residents and visitors to enjoy. In recent years Trust rangers have



installed swift boxes on the side of the low wooden office on site. Swifts have now successfully bred in the boxes for the past few years, and the team will be scouring spring skies for the return of these most welcome visitors.

In summer the meadows include a wide range of wildflowers including knapweeds, scabious, trefoils, and hay rattle; these provide nectar and pollen for bees, butterflies (orange tip, brown argus and small copper) and other insects. The surrounding meadows and nearby farmland also provide a home for brown hares and various birds including meadow pipits, corn bunting or grey partridge.

Old ponds have been restored, trees planted to create a parkland landscape and small woods planted, plus there is over a mile of river frontage to the River Cam, some of which includes riverside paths, while other areas are left wilder and less disturbed so that otter and other river wildlife can flourish, such as water vole.

Cherry Hinton chalk pits

Cherry Hinton chalk pits nature reserve is an unusual lunar landscape to walk in: two chalk quarries once provided hard chalk to build University of Cambridge colleges and lime for cement. Now, they support a variety of habitats that harbour some rare plants and insects.

Quarrying finished there around 200 years ago, and nature has reclaimed the site with woodland of ash trees and field maples (the cherry trees in Lime Kiln Close are descendants of trees that gave Cherry Hinton its name).

Standing within the pit, you are surrounded by steep cliffs of chalk that glow in the late afternoon sun. Reprofiling of the base of the pit,

and breaking up the solid chalk surface, enabled wildflowers and grasses to spread and colonise across the exposed chalk. Wildflowers such as milkwort, harebell and kidney vetch are thriving, and the rare moon carrot only grows here and at two other locations in the country (Beachy Head, East Sussex, and Knocking Hoe, Bedfordshire).

Find more ideas for local nature reserves on The Wildlife Trusts' website.

➔ www.wildlifebcn.org/nature-reserves

Want to get closer to the wildlife on your doorstep?

The Wildlife Trusts also run workshops at some of the best local wildlife sites and online during the pandemic, led by enthusiastic local naturalists. If you have an interest in local wildlife, the trainers will be more than willing to share their vast knowledge with workshop participants.

➔ www.wildlifebcn.org/get-involved/training-workshops



Healthy You wellbeing walks

Healthy You wellbeing walks support people who are inactive or have a low level of activity to take up walking, reaping all of the benefits outlined by The Wildlife Trusts. This is done through a series of local short walks led by a trained walk leader.

These walks:

- are open to everyone
- cover easy terrain so that they are accessible to people with different abilities
- last at least 10 minutes, but no longer than 90 minutes
- are consistent, starting at the same time and place.

There are a number of Healthy You walks taking place in South Cambridgeshire. Find one near you by contacting our coordinator, Leah.

✉ leah.collis@scambs.gov.uk

☎ 07508 020 678

Interested in setting up a walk or becoming a volunteer at a walk?

As a walk leader you would:

- receive specialist training and ongoing support as part of a nationally recognised and well respected programme
- help people in your community to get active and healthy, providing vital support that they otherwise might not get, while staying active yourself.

Get to know others and become part of our nationwide community of walkers and volunteers.



Plan now for 6 May elections

Information correct at the time of going to print. For the most up to date information visit www.scams.gov.uk/elections

What elections?



Elections taking place in our area on 6 May:

- Police and Crime Commissioner
- Cambridgeshire and Peterborough Combined Authority Mayor
- County Council
- A handful of District Council by elections
- Parish Council elections
- Neighbourhood plan referendums

Voting during a pandemic: what to expect

There are a number of elections due to take place on 6 May and we are working hard to make voting as safe as it can be, bearing in mind the pandemic.

Please help us to keep everyone safe by:

- following the one-way system in place through your polling station
- being patient if we need to limit the number of people inside the polling station, meaning you may need to queue outside
- using hand sanitiser as you enter the station
- wearing a face covering
- bringing and using your own pencil or pen to vote.

Or apply to vote by post

If you would prefer not to visit your polling station, you can apply to vote by post. The sooner you apply, the more it will help us to process applications quickly. If you apply to vote by post, your ballot papers will be sent to your home around 10 days before the election. The deadline to apply is 5pm, 20 April.

To apply, download and print out the postal vote application form from our website, complete your application in pen with your signature and date of birth, and return it to us (we recommend scanning and emailing it to elections@scams.gov.uk). Find out more, including how to apply, online.

➔ www.scams.gov.uk/elections

Register to vote

If you are not yet registered to vote, you can register online. ➔ www.gov.uk/register-to-vote

Ready, steady, census

Facts from the last census

148,755 people lived in South Cambridgeshire

1,901 people worked as nurses, and 999 people worked as medical practitioners

There were **69 households** with 8 or more people

563 people said they were Jedi Knights

The Census is a once-in-a-decade survey that gives us the most accurate estimate of all the people and households in England and Wales.

It has been carried out every decade since 1801, with the exception of 1941, and it helps to inform planning and funding of local services, such as schools, doctors' surgeries, emergency services or local support groups. Charities and businesses also use census information to access funding and plan ahead.

It only takes 10 minutes to complete and it's easy to do on any device. Households across South Cambridgeshire should be

receiving letters with online codes explaining how to complete the Census form online. You can also request a paper questionnaire if you'd prefer to complete your census that way.

Census day is Sunday 21 March, and residents are asked to complete the survey on that day. For more information visit the Census website or call the contact centre.

➔ www.census.gov.uk
📞 0800 141 2021

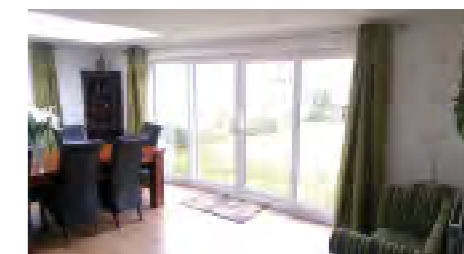
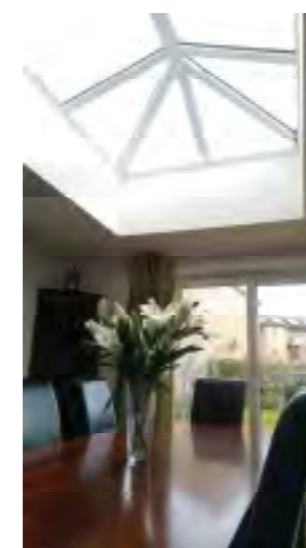
JPT DESIGN CONSULTANTS LTD.

Architectural Drawings for Residential Planning and Building Control Applications

NEED TO CREATE MORE SPACE IN YOUR HOME?

Let us come and tell you what's possible!

Extensions - Conservatories - Loft or garage conversions - New build projects



WE DON'T STOP THERE!

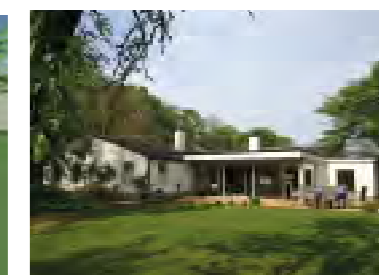
We can draw your plans for you, apply for planning permission and building control approval.



Before



Concept Design



After

WANT TO KNOW IF YOU CAN AFFORD TO DO IT?

We can also provide estimated building costs so you know whether the ideas are within your budget.

Contact us for a free no obligation consultation on:

T: 01954 717442 E: Info@jptdesign.co.uk

Visit our facebook page to view previous projects - JPT Design Consultants

www.jptdesign.co.uk

The Studio, 23 Halifax Road, Upper Cambourne, CB23 6AX



What is a Community Governance Review?

“As a Council our ambition is to be truly modern and caring, part of which includes making decisions in a transparent, open and inclusive way,” says Cllr Douglas de Lacey, Chair of the District Council’s Civic Affairs Committee.

The Civic Affairs Committee oversees how parish and town councils across the district are run.

Town and parish councils are the most local of all the various tiers of government, having responsibility for areas known as ‘civil parishes’ (these are different to church parishes). Civil parishes have elected councillors and receive a portion of residents’ Council Tax, and they encourage and support communities to tackle local issues that matter to them.

Part of the role of the Civic Affairs Committee is to oversee Community Governance Reviews. These reviews are the process through which existing parish arrangements can be considered and, sometimes, changed.

The reviews look at topics such as: altering the boundaries of existing parishes; changing the names of existing parishes; creating a new parish and parish council; or changing the number of parish councillors a council elects.

The District Council has responsibility for undertaking these reviews, deciding on the outcome, and implementing it.

Cllr de Lacey continued:

“We listen very carefully to the views of residents expressed in Community Governance Reviews, and we then do our best to come up with community governance solutions which reflect all of the views expressed.”

Inviting residents to take part

For every Community Governance Review we consider what the best methods are to encourage as many residents as possible to take part.

You can take part by completing a short questionnaire called a submission form – either on a paper form or via our website.

The questionnaire will set out the proposed change, or options for change. We like to give residents the choice to simply tick their preferred options if they are short of time and to provide longer written answers should they choose.

We work with town and parish councils to promote the reviews in the local area, using town and parish councils’ websites, newsletters, social channels and noticeboards, as well as promoting the review on the District Council’s website and social channels, hosting events (when the pandemic allows) and often distributing flyers

door to door in areas covered by the review.

Cllr Bill Handley, Lead Cabinet Member for Community Resilience, Health and Wellbeing, said: “The pandemic has reinforced something that we already knew, that the local knowledge of residents, and of community figures such as parish councillors, is hugely important when it comes to ensuring that our communities’ needs are met. Community Governance Reviews offer communities the opportunity to be part of the evolution of governance arrangements at a local level. It’s really important that residents are part of the process and have their say, so that they help to shape the democratic structure in which they live.”

Recent reviews

There have been a number of Community Governance Reviews run in the past year.

Thriplow and Heathfield

This Review considered the number of councillors that should represent the two wards of Thriplow and Heathfield on the Parish Council. The Community Governance Review supported a change in the number of councillors representing each ward, as well as a change to the name of the parish, from Thriplow Parish Council to Thriplow and Heathfield Parish Council.

Mark Brogan, Chair of Thriplow and Heathfield Parish Council, said: “We very much appreciated the Community Governance Review as it allowed us to amend the composition of the parish council to more correctly reflect the balance of the population in the village of Thriplow and Heathfield. The results of the survey verified our initial thinking in this regard.”

Longstanton, Oakington and Westwick, and Northstowe

Prompted by the development at Northstowe, a Community Governance Review of Longstanton, and Oakington and Westwick, was needed to consider where the parish boundaries should be, whether Northstowe residents would be represented by existing parish councils or by a new dedicated body, and how many councillors would be needed for any new arrangements.

The Review resulted in the decision to create a new civil parish for Northstowe, defining a new parish boundary; and the decision to create a new administrative body called Northstowe Town Council. The new Town Council will consist of 15 councillors. We are currently inviting local people to stand for

election. Find out more by emailing duty.communities@scams.gov.uk Cllr de Lacey explained: “Conflicting views were received on the extent of the boundary of Northstowe, and we had to think long and hard on how we could reconcile these. In the event we produced a solution which we think satisfied the majority of concerns expressed. All the parish councils pronounced themselves pleased with our decision.”

Foxton

A Review to consider the number of parish councillors representing Foxton was inviting submissions until February. The team at the District Council has now collated responses and prepared a recommendation for Civic Affairs Committee on 25 March. Residents are always welcome to watch official Council meetings which are streamed online. Find out more by visiting www.scams.gov.uk/council-meetings

Simon Buggy, Chair of Foxton Parish Council, said: “We noticed that councillor workloads were increasing due to our growing village and an increasing number of consultations needing our input. We hope that the Community Governance Review will result in

an additional councillor, lightening each councillor’s load and giving the council the capacity to be more proactive.”

Babraham and Sawston

The most recent Community Governance Review is considering a change to the shared boundary of Babraham and Sawston parish councils. The first stage of the review ended at the beginning of March, but stage two submissions will be invited between 6 April and 1 June.

Kevin Cuffley, Chair of Sawston Parish Council, explained: “Due to two developments, there is a need to consider a boundary change. The two parish councils spent a lot of time coming up with a proposed solution and the Community Governance Review gives residents a chance to give their views.”

Cllr Stuart Laurie, Chair of Babraham Parish Council, said: “It is important that both villages maintain their identities, and the Community Governance Review gives us an opportunity to consider a practical solution to a physical problem.”

Find out more about any of our current or future Community Governance Reviews, or participate in the next phase of the Sawston and Babraham Review, by visiting our website.

➔ www.scams.gov.uk/community-governance-reviews



Artist impression of Northstowe. Credit: Homes England.



Babraham/Sawston new development. Credit: Tim Chapman



the Cambridge Renewable Energy Centre  part of

ELLIOTTS
Masters in Machinery



Stylish

Where innovation meets creativity

Daikin air conditioning available from Elliotts - Daikin D1 partners

Daikin's award-winning **Stylish** air conditioning unit brings together excellent design and technology to deliver a total climate solution for any interior.

Winner of the Red Dot and Good Design Awards, **Stylish** is one of the slimmest (189mm deep) wall mounted units on the market and achieves the best in comfort, energy efficiency, reliability and control.

The **Stylish** unit comes in three colours (white, silver and blackwood) with curved corners, for a discreet and space-saving design. So Daikin harmonises aesthetics and performance to create an innovative product that suits any contemporary interior.

The Coanda effect: optimises the airflow for a comfortable climate

Fresh, pure air: provides the best indoor air quality using Daikin's deodorising filter

Quiet operation: with a new fan design delivering higher energy efficiency at low sound levels

Smart control: of the unit, from your smartphone, with Daikin's Online Controller

Smart control: STOP PRESS All Stylish units now include Flash Streamer Virus Killer technology!!

See the latest stylish unit working at Elliotts Renewable Energy showroom

Unit 44, Viking Way, Bar Hill, Cambridge, CB23 8EL

Tel: 01954 20 20 20

See our renewable energy website www.tcrec.co.uk
Also -see www.tcrec.co.uk and look at Air Purification to see our PureAir video



reddot award 2018 winner

TIM PHILLIPS & Co. Ltd. Accountants

EASY TO FIND US
Map on website
FREE PARKING



FREE consultation – No Obligation



INDEPENDENT Specialist Service

Small Businesses
Self Assessment
Personal Taxation

Accounts • Bookkeeping • VAT • Payroll • CIS
Tax Returns • Tax Calculations
Lettings • Higher-Rate Tax Payers

Cart House 2, Copley Hill Business Park, Cambridge Road, Babraham, Cambridge CB22 3GN

01223 830044
TPaccounts.co.uk



Innovators in Water-based Technology

WWW.BEDEC.CO.UK EMAIL: PAINT@BEDEC.CO.UK TEL:01279 876657



**Would you like your Oven,
Range or AGA Gleamed?**



We'll come to your home and deep clean your Oven, AGA, Range, Hob, Grill and Extractor until they Gleam. We can also clean your BBQ. Our unique process is mess, odour and fume free using only organic products within your home. All work is covered by the OvenGleamers Satisfaction Guarantee.

FREE
No-Obligation
Quotations
Call NOW!

Call Now On:
01223 750909

www.ovengleamers.com
Ovens | Ranges | AGAs | Hobs | Extractors | BBQs

New planning teams to manage development in Greater Cambridge

Image credit: RLW's plans for the new town north of Waterbeach

In March 2020 the Greater Cambridge Shared Planning Service created three geographical area-based planning teams, which cover the Greater Cambridge area for the development management service (dealing with planning applications, appeals, pre-application requests and discharges of conditions).

The reason for having area-based teams is to provide a more responsive and focused service to the local communities and planning agents/applicants within those areas, given the large size of Greater Cambridge. This includes building closer relationships with the parishes and local communities to develop improved understanding of local issues and for the local communities, providing named officer contacts for the individual areas.

We recently made some changes to the team areas that were originally set, to even out the distribution:

- Fulbourn and Fen Ditton have moved from Area 2 to Area 1
- Barrington and The Mordens have moved from Area 3 to Area 1



Area 1, covering the southern part of South Cambridgeshire. Julie Ayre is the team manager

Area 1 covers the southern part of South Cambridgeshire and extends from Carlton to Steeple Morden and includes the Science Parks of Granta Park and Hinxton, together with IWM Duxford.

The area includes some of the larger villages such as Fulbourn, Linton and Melbourn. There are lots of planning challenges in this rural part of the district including protection, adaption of the historic building and Conservation Areas within our villages and the need to balance this with good quality housing and giving support to our business community. The team recognises these challenges and is working hard to meet them.



Area 2, covering the north and north east parts of South Cambridgeshire and the Cambridge City wards to the east. This team is led by Toby Williams

Area 2 covers the eastern half of Cambridge and extends from Milton in the east, including villages generally north of the A14, leading to Swavesey and Fen Drayton in the west. The area includes some large village settlements such as Milton, Waterbeach, Histon and Impington and Cottenham.

Some of these are subject to the build out of five year housing land supply sites. Challenges in the area include surface water flooding, congestion and transport impacts and addressing poverty and inequality.

There are a significant number of large and small sites coming forward which will involve the regeneration of brownfield land for employment, residential and leisure uses.

Area 3, also covering some of South Cambridgeshire's northern districts, north west and the Cambridge City wards to the west.

Lorraine Cassey is the team manager

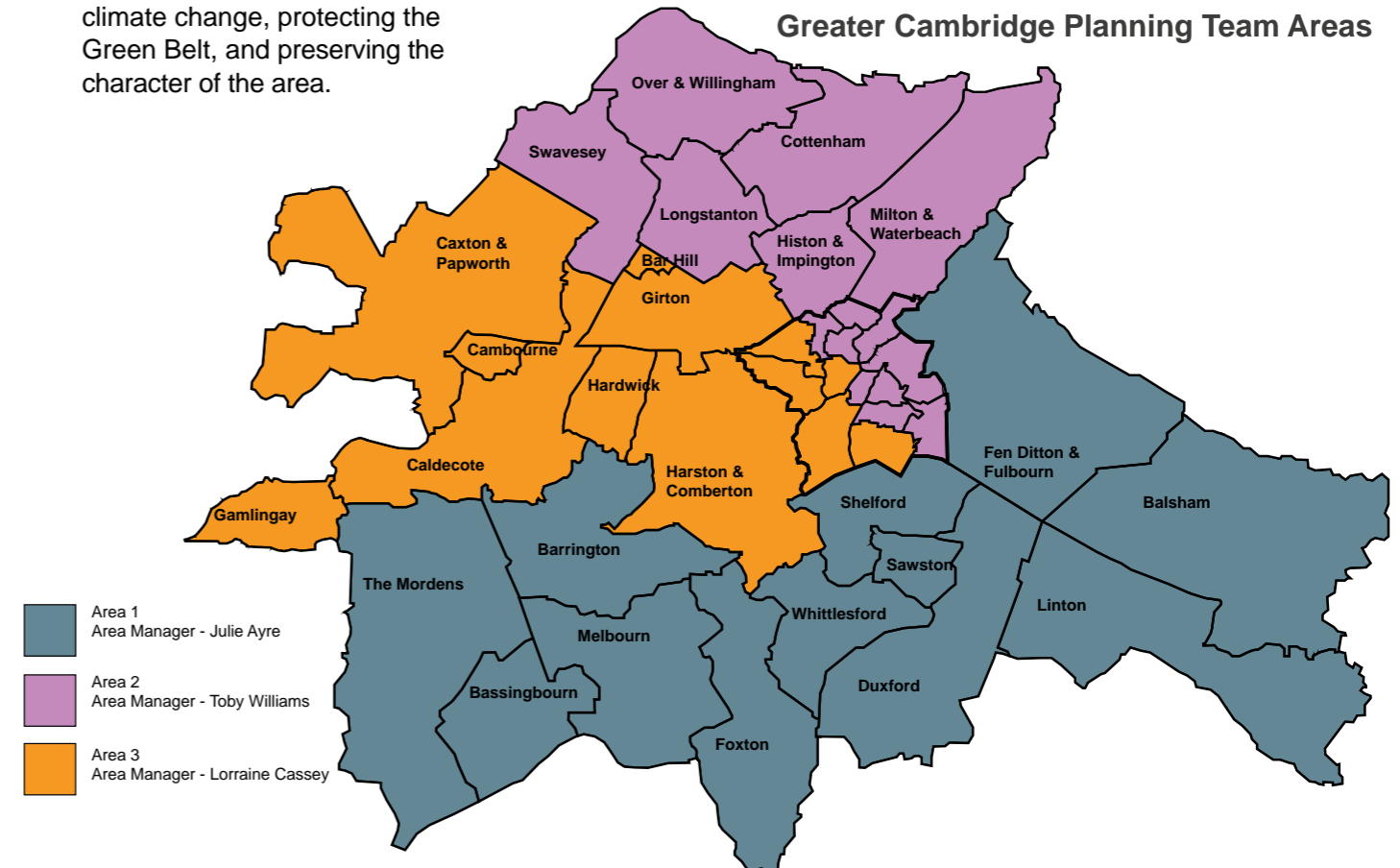
Area 3 covers the western side of the district, incorporating around 40 parishes. In South Cambridgeshire, the villages range from larger settlements, such as Cambourne and Gamlingay, where new housing is generally directed, to small villages such as Boxworth, where growth is more strictly controlled.

Key challenges relate to accommodating growth whilst also securing adequate affordable housing, tackling climate change, protecting the Green Belt, and preserving the character of the area.



Please see full details of which villages are covered by which team member in the coloured map below. To find contact details for the three teams, please visit the Greater Cambridge Shared Planning website.

➔ www.greatercambridgeplanning.org/areateams
📞 03450 455 215



Planning building work at home?

Protect your investment with 3C Building Control.

Any investment you make in your home is likely to be significant, and you will want to make it wisely. 3C Building Control – the Council’s shared building control team – is here to support you in the process.

Consulting with Building Control is key to the success of any building project, and residents can benefit from this on household projects

too as it provides some certainty that what is approved by the planning department is also going to be buildable.

This reassurance can help to secure your investment, as well as the safety of your project, whatever your budget. It also means that once you have gained planning permission, the transition

to the building control process is much smoother.

We are a Local Authority Building Control, which means that we are non-profit making. We like to think of ourselves as Looking After Buildings in our Community.



Contact us and we can help you to protect any investment in your home.

➔ www.3csharedservices.org/building-control/what-are-building-regulations/

✉ BuildingControl@3csharedservices.org ☎ 0300 772 9622

Find out whether you need planning permission for your project

We know it can be daunting to find out whether you need planning permission. Take advantage of our free pre-application advice to cut to the chase to find out whether you need it for your project or not.

The aim of the service is to help potential applicants develop the best quality proposals that will meet requirements, to help them to be validated and decided more quickly.

What advice is available?

- A free 15 minute conversation with a planner to discuss minor household matters, such as back extensions, new dormer windows, fences and hedges, garages and outbuildings
- Paid-for services:

- A 30 minute video consultation with a planner on small household or business projects, such as building extensions, external changes and advertisement consent
- A site meeting with a planner to look at your site and offer advice
- Input from a specialist planner, such as on design, heritage, environmental health, ecology or trees

- Bespoke advice packages and planning performance agreements for large and complex projects.

- Clear written feedback using a traffic light system to show how likely it is that your proposal will be acceptable in planning terms.

Fees are waived for Parish Councils, small charities and applications specifically required for the needs of disabled people.



Find out more via our Shared Planning website. ➔ www.greatercambridgeplanning.org/preapplication

COVID-secure and safe for our patients and staff

Free car-parking and Wi-Fi

Animesh Patel, Plastic Surgeon, Co-owner

“ Welcome to Coach House Health Care, a newly-refurbished and renovated multi-disciplinary clinic, situated in the grounds of Anstey Hall, where you can now find all your health and well-being practitioners under one roof! ”

Lorna Bacon, Podiatrist, Co-owner

Our qualified, experienced practitioners offer treatments in the following areas:

- ❖ Podiatry/Chiropody
- ❖ Physiotherapy
- ❖ Osteopathy
- ❖ Sports Massage
- ❖ Psychiatry
- ❖ Lactation Consultations, including Tongue-Tie management
- ❖ Non-Surgical Cosmetic Treatments
- ❖ Plastic Surgery Consultations, including skin lesion assessments
- ❖ Beauty Therapy, including Dermapen® microneedling
- ❖ Audiology, including Micro-suction earwax removal

CLINIC ROOMS AVAILABLE TO RENT

If you are a qualified practitioner, looking for a clinic to practise, contact us to find out how to join our team.

CONTACT US

✉ The Courtyard, Anstey Hall, Maris Lane, Trumpington, Cambridge. CB2 9LG

☎ 01223 340491

✉ reception@coachhousehealthcare.co.uk

🌐 www.coachhousehealthcare.co.uk



Garden supplies from Arrington Garden Centre

As a Council that puts the environment at the heart of everything we do, we're pleased to be teaming up with Arrington Garden Centre to offer a particularly green prize.

One lucky reader will receive £100 worth of plants, a supply of compost and a £25 voucher to spend at Arrington Garden Centre or Bury Lane Farm Shop.

Arrington Garden Centre is a hidden gem on the A1198 near Wimpole. Established in 2016, extensive work was carried out on the existing site to create a garden and plant centre that focuses on a wide variety of quality products, with a small but experienced team on hand to give excellent advice and personal service.

As an independent family run business, Arrington Garden Centre offers mainly UK or own grown bedding, perennials, shrubs and trees alongside garden sundries, tools, bird food and a small selection of greeting cards and gifts.

Alongside the plant centre there is a garden shop selling top quality sundries such as a selection of Kent & Stowe garden tools, Darlac cutting tools, Flopro watering equipment, gardening gloves, feeds and nutrients, lawncare, bird food and feeders plus a choice of houseplants. Outside you will find a range of composts, mulch and aggregates.

Open seven days a week with a large free car park, the team can be contacted on 01223 208 194, via manager@arringtongardencentre.com or on their Facebook site or at www.arringtongardencentre.com

To be in with a chance of winning, just answer this question:

How much edible food did South Cambridgeshire residents throw away in their black bins last year?

- a) Just under 3 tonnes
- b) Just under 30 tonnes
- c) Just under 300 tonnes

You can enter the competition online at www.scambs.gov.uk. Click 'Apply' and then select 'Readers' competition'.

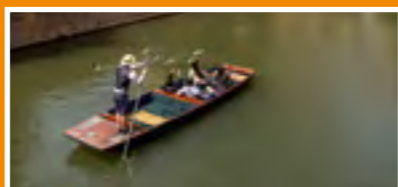
Don't have internet access? You can enter by post. Send your name, address and telephone number, along with your answer to the question, to:

South Cambs Magazine Competition, South Cambridgeshire District Council, Cambourne Business Park, Cambourne, Cambridge, CB23 6EA

Closing date for entries is 5pm on Monday 19 April 2021.

Terms and conditions are available at www.scambs.gov.uk/t-c or can be requested by calling 03450 450 500.

Winners will be notified by Friday 23 April and announced in the summer issue of South Cambs Magazine.



Winner's spotlight

Congratulations to Barbara Westgate who was the winner of the competition in the previous issue of South

Cambs Magazine. She won a private chauffeured punt tour for up to nine people, courtesy of Scudamore's Punting Cambridge.

She said: "How exciting, I am thrilled to hear I have won! It will be lovely to have something to look forward to later in the year, hopefully some of the restrictions will be lifted before the end of the summer."

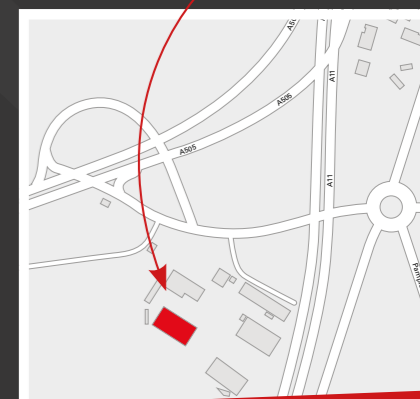


Independent specialist for all things
Audi, VW, Seat, Skoda & VW Commercial

- ❖ VWG Servicing
- ❖ VWG Repairs
- ❖ VWG Diagnostics
- ❖ VWG Performance Upgrades
- ❖ VWG Genuine Parts



We are here



quattro-tech.co.uk



SALES ❖ AIR CON SERVICING ❖ 4 WHEEL ALIGNMENT ❖ MOTs

revo Authorised Dealer

Unit 11A, Solopark Trading Estate, Station Road, Pampisford, Cambridge CB22 3HB
Info.cambridge@quattro-tech.co.uk 01223 800850



[@QuattroTechLtd](https://www.facebook.com/QuattroTechLtd) [@QuattroTechLtd](https://twitter.com/QuattroTechLtd) [@quattrotechLtd](https://www.instagram.com/quattrotechLtd)

- ✓ MCS approved solar PV installer
- ✓ Battery storage installer
- ✓ EV charging
- ✓ Certified Tesla Installer
- ✓ Domestic & Commercial

"Brilliant work by a company that goes the **extra mile**"
Customer in Cambridgeshire Oct 2020

22+

Years Experience

800+

Installations

15,000+

Solar Panels

4,500+

kWp Installed

Contact us anytime on

01223 863 885

info@cambridge-solar.co.uk

www.cambridge-solar.co.uk

