

SouthCambs

Magazine

www.scambs.gov.uk

Winter 2019

Local Plan: join the conversation

See pages 6, 7, 8 and 9

WIN

A mini-break on the Norfolk coast

See page 46



South
Cambridgeshire
District Council

Don't move improve...

FREE PLASTERING & ELECTRICS

On all orders before 31st December

Invest in your current property by installing the unique Guardian Home Extension



The unique Guardian Home Extension, offering a complete solution in 3 weeks - from foundation to completion.

Choose a Guardian Extension from us:

- Add space and value to your property
- Benefit from an energy efficient SIP panel extension
- Save on running costs with thermally efficient windows, bi-folds and roofs
- Manufactured off-site, completed in just 3 weeks on-site
- Fixed price for predictable outcome; on-time, on budget
- LABC registered
- 20-year installation guarantee

Projects4Roofing in partnership with manufacturers Guardian, Kingspan, Velux and Shire offer a unique home extension.

Fitted by the Projects4Roofing team we guarantee the process from start to finish, using quality products delivering on-time and on budget with our own staff and tradespeople.

**In just a few weeks we will design, build
and fit your Guardian Home Extension.**

**Contact us directly for a FREE
no obligation quote 01638 507 730**

01638 507 730
info@projects4roofing.co.uk
projects4roofing.co.uk



Projects4Roofing Limited, 9 Sam Alper Court,
Depot Road, Newmarket, Suffolk CB8 0GS

PROJECTS4 ROOFING

Hello

Welcome to the winter edition of South Cambs Magazine

Having recently joined the Council as Chief Executive, it's lovely to be welcoming you to the latest edition of South Cambs Magazine. My first job is to highlight that you'll soon have the chance to help us start to create what's being described as 'the most important document most people have never heard of'. In this issue, we're devoting several pages to this document – our next Local Plan. This new Plan, which will be joint with our friends at Cambridge City Council, touches so many aspects of all of our lives so we really want to do more than ever before to reach out to as many of you as possible, so you help craft it. We know many people don't traditionally engage with these sorts of big consultations and we are doing all we can to change that.

The next Local Plan will tackle some really big themes. These are climate change, biodiversity and green spaces, wellbeing and social inclusion, and creating great places. All of these feed into what types of new homes we build and where, where businesses can locate and how transport links, schools and

healthcare can support new homes and jobs. Turn to page 6 to find out how, from early in the New Year, you, your friends and family can get involved in creating our next Local Plan for the decades ahead.

With Christmas rapidly approaching, we've put together some tips to help you have a green festive season. Flick to page 16 for inspiration. On page 28, we detail our latest achievements as we look to bring forward new Council homes.

Finally, I'd like to wish all our residents a very Merry Christmas. I look forward to seeing you out and about in the district in 2020.

Happy reading,

Liz Watts

Chief Executive
South Cambridgeshire District Council



The next issue of South Cambs Magazine will be delivered between 28 February and 14 March.

For all delivery enquiries please contact Smart Distribution on scdc@smartdistribution.co.uk or 0800 6444 011.

For a large print copy please contact:

 **communications@scambs.gov.uk**

 **03450 450 500**

Contents

Contact us	4
Local Plan	6
Tourism	12
Environment	16
Recycling and waste	24
Housing	28
Planning	30
Resident updates	35
Health and wellbeing	42
Competition	46

South Cambs Magazine

Enquiries should be directed to:

Editor: Gareth Bell

Editorial: Tom Horn and Hannah Coetsee

South Cambridgeshire District Council,
South Cambridgeshire Hall,
Cambourne Business Park, Cambourne,
Cambridge, CB23 6EA

E: communications@scambs.gov.uk
T: 03450 450 500

Design: Danielle Harrington

Advertising:

Charlotte Dyason
Media Shed Ltd, 58 High Street,
Maidstone, Kent ME14 1SY

E: charlotted@media-shed.co.uk
T: 0203 137 9119

The opinions and views expressed in South Cambs Magazine are not necessarily those of South Cambridgeshire District Council or Media Shed Ltd. All data contained in advertisements, being subject to the Advertising Standards Authority guidelines, is accepted in good faith at the time of going to press



Printed on wood fibre from sustainable forests



When you have finished with this magazine, please recycle it in your blue bin.

Contact us

The quickest and easiest way to contact us and to report, apply or pay for something is via our website:



www.scambs.gov.uk

Social media:



@SouthCambs



'South Cambridgeshire'

Email or call:

Benefits:	benefits@scambs.gov.uk	03450 450 061
Building Control:	buildingcontrol@3Csharedservices.org	0300 772 9622
Elections:	elections@scambs.gov.uk	03450 455 214
Environmental Services:	env.health@scambs.gov.uk	03450 450 063
Housing Fraud:	tenancy.fraud@scambs.gov.uk	03450 450 051
Fraud (general):	fraud@scambs.gov.uk	03450 450 061
Housing:	duty.housing@scambs.gov.uk	03450 450 051
Planning:	planning@scambs.gov.uk	03450 455 215
Revenues:	revenues@scambs.gov.uk	03450 450 064
Rents:	rents@scambs.gov.uk	03450 455 216
For all other enquiries:	scdc@scambs.gov.uk	03450 450 500



Visit or write:

South Cambridgeshire District Council,
South Cambridgeshire Hall,
Cambourne Business Park,
Cambourne, Cambridge, CB23 6EA

Office open Monday to Friday,
8am to 5.30pm

To make a payment

- Visit www.scambs.gov.uk and click on the 'Pay for it' button
- Call our automated payment line on 03450 455 218

You can also pay using a payment card at any Post Office or Pay Point outlet

To request a Direct Debit form or a Post Office payment card, call 03450 450 064. To find out how to set up a Direct Debit online to pay your Council Tax, see page 39.

Putting service first

If you phone us we will

- resolve your enquiry as quickly as possible
- provide voicemail if the person you need is unavailable
- answer your phone message within three working days

If you write to us we will

- reply to your letter or email within 10 working days

If we write to you we will

- write in plain language
- arrange for translation, large type, braille or audio tapes upon request

If we visit you we will

- carry identification that you can check with a phone call to our contact service on 03450 450 500
- arrive at the time we say we will, or give you as much notice as possible if we have to change the time

If we get it wrong we will

- apologise if we have made a mistake or failed to meet our standards
- acknowledge your written complaint within three working days
- reply in full to your complaint within 10 working days

Tell us how we're doing

We're proud of what we are trying to achieve and recognise we can always do better. To help improve our services, we need your feedback. Whether it's a compliment, a general comment or a complaint, we want to hear from you.

www.scambs.gov.uk/contact-us

Waterbeach Lodge

First Class Residential Care

Scimitar Care Hotels is dedicated to providing a superior lifestyle of comfort, happiness and independence that redefines the perception of residential care for the elderly. Our quality and standard of service really do make a difference to our residents' lives.

- En-Suite Facilities
- Private Telephone & Television
- Nurse Call Facilities
- 24 Hour Care
- Fully Licensed Bar
- Passenger Lifts
- All Meals Freshly Prepared
- Short or Long Term or Day Care
- Single Occupancy Rooms
- Personal Laundry Service

Scimitar Care Hotels provides long and short-term care and day care so that carers can take a break.

SCIMITAR CARE HOTELS PLC

Waterbeach Lodge | Ely Road

Waterbeach CB25 9NW | 01223 862 576

WaterbeachLodge@ScimitarCare.co.uk



The most important document you've probably never heard of and why you should get involved

Do you worry about climate change and how we are going to adapt? Are you trying to buy a house and finding it really difficult? Have you ever walked past a building and wondered how it got planning permission?

The Council's Local Plan is the document that shapes our area's future and answers these big questions. Our next Local Plan will be shaped by the key themes of climate change, biodiversity and green spaces, wellbeing and social inclusion and the creation of great places.

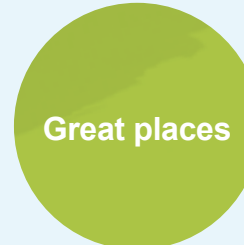
These key themes impact on everything from what kind of new homes get built and where, to where businesses can grow and how buildings,

streets and spaces should be designed. As a result, the Local Plan affects all of us – yet most people haven't ever heard of it. But things are changing, and we want you to be a part of it. For the first time ever, Cambridge City Council and South Cambridgeshire District Council are preparing a joint Local Plan for the Greater Cambridge area: and this time we want to do better than ever at working with residents to make it happen.

We will be starting the first conversation with the community on Monday 13 January, with many different ways to get involved.

We'll be popping up at train stations, supermarkets and events, but please look out for more information nearer the time, and get in touch, at www.greatercambridgeplanning.org

Greater Cambridge Local Plan - the big themes



These four themes feed into:

- What types of new homes we build and where
- Where new jobs are based and where businesses can locate
- How infrastructure such as transport links, schools and healthcare can support new homes and jobs



What is the Local Plan?

A Local Plan is a legal document that shows how our area will change over the coming decades. It sets out:

- **What we build** in the area – new homes, workspace and facilities, and how we change existing areas for the better
- **Where we build** and how this relates to infrastructure –

including transport links, schools, health and utilities

- **How we build** in all aspects of design and layout

It sets out how South Cambridgeshire and Cambridge will change over the coming decades to meet the big challenges of the future in ways that our communities want to see.



Why are we making a new Local Plan?

For the first time ever, Cambridge City Council and South Cambridgeshire District Council are developing a joint Local Plan covering the whole of Greater Cambridge.

You are right if you think that we only just adopted Local Plans for both Councils last year. However, making a new Local Plan takes a number of years, so we need to start working now so that it is ready to meet the future challenges.

Both Councils have also declared a climate emergency and want a cleaner, greener net zero carbon future. In addition, central government published a revised set of national planning rules this year and made new commitments to reaching net zero carbon by 2050.

It is vital that we have a Local Plan that is fit for purpose and strong enough to take us forward with confidence.



Why should I get involved?

The Local Plan affects everyone. Whether you are looking to put an extension on the side of your home or business, wondering where your children might live in the future, or developing a new town such as Northstowe, the Local Plan sets out the local policies all these decisions will be judged against.

Once it is in place, it is a legal document and its policies are really important when deciding on planning applications that are submitted, and new projects that are proposed. We need you to tell us what you think the Plan should say, so that when it is implemented, it's been fully informed by local views.

By getting involved, you can really help shape what happens over the next 20 years – you can tell us what your priorities are and how you think we should be solving some of the big and difficult questions we are facing.



What can I influence?

Lots! It is true that some things are set by central government – for example, we must plan for at least the minimum number of new homes under the method the government requires, and meet national standards such as building regulations and environmental efficiency. But the big decisions are down to you to help us shape:

- Where new development should go – intensifying the centre of the city, around the edge of Cambridge, building new towns or villages, or around our existing villages?
- What kind of homes and businesses should we be planning for?
- How ambitious should we be about meeting the climate change challenge?
- What standards should we be setting for design?



What are the big issues?

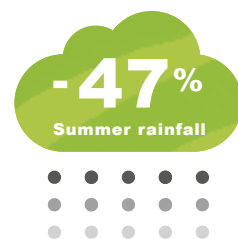
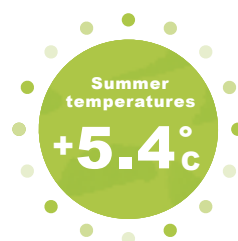
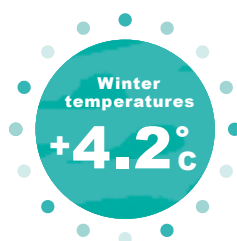
Getting the right Plan in place will mean difficult choices, balancing a range of competing priorities and issues.

As mentioned on page 6, we've grouped these into four big themes. You can pick and choose which ones to comment on, but we'd love for people to get involved in them all.

On this page, there is a snapshot of some of the questions we are posing to kick start the conversation.

Climate change

- We need to transition to a net zero carbon society by 2050 – how are we going to achieve this?
- Our climate will be 4.5 degrees hotter by 2070 – how should we be designing to manage this?
- Our winters will be 35% wetter but our summers will be 50% drier – how will we manage water?



Great places

- Cambridge and the surrounding area is known for its heritage – how should we protect it and make sure that communities get the most out of our historic buildings and landscapes?
- We have a track record in outstanding new buildings which win design awards nationally – how can we make sure that every new development is something to be proud of in the future?



Biodiversity and green spaces

- Nature is under pressure and we need to enhance it to create more biodiversity – how can we do this?
- Green spaces are vitally important not only for wildlife, but for our health and wellbeing. Where and how should we be making new public green spaces?



Wellbeing and social inclusion

- While our area is very prosperous overall, some parts of it don't share in this wealth. How can we plan for growth that benefits everyone?
- Places that are successful are welcoming and inclusive to everyone. How should we make this happen in our new communities?
- We must encourage people to live more healthily – in terms of exercise, mental health and ageing well. How should we design for health?



What will these big issues impact upon?

All four of the key themes on the previous page feed into the planning of future jobs, homes and infrastructure.

Each of these areas pose their own questions and challenges too.

Homes

- Central Government requires us to plan for a minimum of around 1,800 homes to be built per year over the next 20 years across Greater Cambridge. Our current Local Plans include a figure of 1,675 homes a year. However, early indications are that around 2,900 homes a year would provide flexibility to support our growing economy. What do you think we should aim for?
- Housing is very unaffordable in our area. How can we encourage more affordable homes to be built?
- We want to make sure that there are homes to suit all kinds of people – not one size fits all. What kind of homes do you think are needed, and where?

How many new homes per year?



Infrastructure

- We need to show how things like transport links, schools, health and utilities will support new homes and jobs. How can we make sure this is built when it is needed?
- We particularly know we need to reduce private car use and make it easier to use public transport, walk and cycle to meet our net zero carbon target. How can we do this?



Jobs

- We have a nationally important economy which is a world leader in innovation. How should this be supported to grow going forwards?
- How should we balance different sectors such as tourism, agriculture, education and retail?
- How can we encourage a range of jobs to be created, so that there is employment for different kinds of people, and in different places?

When and how can I find out more?

We will be starting a big conversation with all of you on Monday 13 January – there will be lots of ways to get involved.

We want to hear from all parts of our community – especially those of you who haven't been involved in planning issues before. We particularly want to encourage young people to take part - we often don't hear the voices of young people and the Local Plan will affect their futures too. We will be making sure that information and events are accessible to everyone.

From Monday 13 January, visit www.greatercambridgeplanning.org to find out more and to have your say.



the
Cambridge Renewable Energy Centre



part of

ELLIOTTS
Masters in Machinery



Stylish

Where innovation meets creativity

Daikin air conditioning available from Elliotts - Daikin D1 partners

Daikin's award-winning **Stylish** air conditioning unit brings together excellent design and technology to deliver a total climate solution for any interior.

Winner of the Red Dot and Good Design Awards, **Stylish** is one of the slimmest (189mm deep) wall mounted units on the market and achieves the best in comfort, energy efficiency, reliability and control.

The **Stylish** unit comes in three colours (white, silver and blackwood) with curved corners, for a discreet and space-saving design. So Daikin harmonises aesthetics and performance to create an innovative product that suits any contemporary interior.

The Coanda effect: optimises the airflow for a comfortable climate

Fresh, pure air: provides the best indoor air quality using Daikin's deodorising filter

Quiet operation: with a new fan design delivering higher energy efficiency at low sound levels

Smart control: of the unit, from your smartphone, with Daikin's Online Controller

See the latest stylish unit working at Elliotts Renewable Energy showroom
Unit 44, Viking Way, Bar Hill, Cambridge, CB23 8EL
Tel: 01954 20 20 20

See our renewable energy website www.tcrec.co.uk



**GOOD DESIGN
AWARD 2017**



reddot award 2018
winner

ctc

CAMBRIDGE
THEATRE
COMPANY

hairspray

● THE BROADWAY MUSICAL ●

TICKETS
FROM
£12.50

17 – 22 DEC 2019

Box Office: 01223 357851 cambridgelive.org.uk/tickets

Great Hall
at The Leys

Trumpington Road, Cambridge CB2 7AD



What to do this winter in South Cambridgeshire

In the summer issue of the magazine we highlighted some of the great places to visit in South Cambridgeshire over the summer holidays. Now, with the weather cooling, we wanted to share some suggestions on how best to enjoy our district over the winter.

The Wimpole Estate is always a must visit at Christmas, thanks to its stunning festive decorations. Step inside and explore a Georgian Christmas, alongside plenty of family friendly activities to enjoy. See if you can spot a reindeer or two along the Christmas explorer path or book onto a picture tour in the hall or farm.

Eboracum Baroque will return to present a new festive programme of Georgian music in the beautiful chapel on the Wimpole estate. The concert will take place on Wednesday 18 December and feature instrumental and vocal music by Handel, Bach and Telemann. On Christmas Eve, the park will be open until 1pm and will reopen on Boxing Day for the obligatory walk to burn off all the Christmas Day indulgence.

Visit www.nationaltrust.org.uk/wimpole-estate to find out more and plan your festive visit.



National Trust - Wimpole Hall

Visit Cambridge and Beyond offers **Official Walking Tours**, which are a fantastic way to explore the city and follow in the footsteps of some of the famous faces who studied and lived in Cambridge. It's your chance to head behind the scenes as these are the only tours allowed inside the University of Cambridge colleges. With the grounds looking picturesque in the colder months, and never being too far off the beaten track to find a hot chocolate, the tours are a great way to show off your hometown to visiting friends and family over the winter.



For something really unique book onto the **Christmas at King's Tour**. This exclusive tour is a chance to explore King's College Chapel when it is closed to all other visitors, and to truly appreciate this iconic building, famed for Carols at King's. Last year, all tickets sold out, so keep an eye on www.visitcambridge.org to ensure you don't miss out!

Elsewhere, Santa Claus is going to be making a pre-Christmas visit to **Shepreth Wildlife Park** to greet all the children and animals. For just £6, children accompanied by an adult can experience the magic of Santa's Grotto, including a personal greeting from Father Christmas himself, as well as a Christmas gift and entrance to the Wildlife Park.

All proceeds will go towards the Shepreth Wildlife Conservation Charity to fund their on-site **Hedgehog Hospital**. The hospital rescues over 700 hedgehogs a year and your visit to Santa will help fund their rehabilitation back into the wild. Tickets for Santa's Grotto are already on sale at www.sheprethwildlifepark.co.uk

There's no better time of year to try Cambridge's permanent ice rink for the first time. The **Cambridge Ice Arena** off Newmarket Road, which



the Council provided a loan to help fund, is the coolest new activity in Cambridge and there's something for everyone.

Public ice skating is suitable for all ages and levels of ability, from beginner to professional, and there are 'Learn to skate' programmes available for those who might want to take their passion for the ice to the next level.

The full size ice rink gives plenty of space for figure skating and skate hire is available from £2.50. Plus, if you prefer to let the kids take to the ice and stay on more solid ground, why not warm up in the on site café instead!

Head to www.better.org.uk/leisure-centre/cambridge/cambridge-ice-arena to check the winter timetable.

For plenty more ideas

If you are keen to find more ideas for things to do over the winter, go online to Visit Cambridge and Beyond and book tickets for great days out at www.visitcambridge.org



Be safe. Who is taking you home tonight?

With people likely to be taking taxis more often in the run up to Christmas, we want everyone to know how to travel safely.

Taxi operators, drivers and cars all have a number of checks before being granted licences – and it's these checks that ensure passengers' safety. But this only works if passengers know how to identify licensed or unlicensed drivers and cars.

There are two types of taxi licence and knowing which is which can help you to keep safe.

Hackney carriages

This type of taxi can be easily spotted – it will have a yellow light on its roof. When lit up you can immediately hire the taxi from a rank or by hailing it as it drives past.

Private hire cars

This type of taxi looks much more like a normal car and does not have a yellow light on its roof. Importantly, you must pre-book the taxi by contacting the operator.

What else to look for

All licensed taxis will display the licence plate on the rear of the vehicle and should not be in a state of disrepair. The driver will also wear or display their ID with the licensing authority and driver's licence details.

If you're travelling alone, take a picture of the taxi's licence plate or internal vehicle notice, which has details of the vehicle and operator on, and send it to a friend. Sit on the back seat behind the driver, keeping your phone to hand.

If you ever experience a problem in a taxi you should always report it to us, including the car's registration and licence plate numbers. Contact the team by emailing taxis@scambs.gov.uk or calling 03450 450063.





Spring 2020 Adult Learning And Leisure Courses At Sawston Village College



**Some of the courses which have
places available from January**
Mindfulness - Health & Wellbeing

Flowers for Fun
Fused Glass Jewellery
Effective Job Hunting
Classic Indian Cookery
Cooking with Fish
Vegan Cooking
Politics - An Introduction
Sign Language - An Introduction
Bollywood Dance
Fitness Yoga
Flamenco Dancing
Pilates
Tai Chi

Saturday Workshops 18 January 2020

Different Ways to Cook Fish
Drums for Beginners
Fused Glass Jewellery
Indian Feast for Friends
Patisserie
Willow Weaving - Catalan
Platter
Creative Writing

Saturday Workshops

14 March 2020

Bollywood Dancing
Breadmaking
Creative Writing
Drums for Beginners
Fused Glass Jewellery
Indian Street Food
Sugar Flowers
Willow Weaving - Plant
Support Wigwam

For more information please go to www.sawstonadulthood.org
tel: 01223 712424
email: community@sawstonvc.org



Garden Centre

**Come and visit our friendly
team for expert advice!**

Extensive outdoor plant area plus
two large glasshouses bursting with:
Seasonal perennials Homegrown plants
Trees & Shrubs Gardening equipment

**Christmas trees, wreaths
and table decorations**

...and much more!



**ARRINGTON
GARDEN CENTRE
& CAFE**

Cafe

**Visit our welcoming, bright and
dog-friendly cafe**

Choose from our light bites menu,
delicious cakes (including a vegan range)
and a selection of beverages



Located directly off the A1198 near Arrington, SG8 0AG | Open 7 days a week | 01223 208194
ALL YOU NEED FOR YOUR GARDEN, THROUGH ALL THE SEASONS



Fresh Fruit and
Vegetables
Delicatessen
Café
Butchery
Fresh Flowers



New Gift Hall Now Open



Gift Shop
Garden Shop
Plant Centre
Free-range Eggs
Christmas Shop
P—Y—O



Open 7 days a week

A10 Melbourn By-Pass, Melbourn, Royston, Herts SG8 6DF

Tel: 01763 260418 www.burylanefarmshop.co.uk



Paying too much for your glasses?

Save Money - Buy Direct!

Visit our factory shop to see our fabulous range of Discount Prescription Eyewear

- Hundreds of frames to choose from, including designer frames from Ray-Ban, Polo Ralph Lauren, Oakley, PRADA, Ted Baker and Versace
- Specialists in high and complex prescriptions
- Same-day or next-day service available*
- Save up to 75%
- Huge range of designer sunglasses
- Full range of sports eyewear

Official stockists

*subject to prescription and availability



POLO
RALPH LAUREN



PRADA
EYEWEAR

TED BAKER
LONDON

VERSACE

We are open 9am to 5pm Monday to Friday, and 9am to 1pm Saturday



ALL EYES
SPECTACLE MAKERS
— SINCE 1987 —

Call us

01954 231545 www.all-eyes.co.uk

Visit our website

20 Norman Way Industrial Park, Over, Cambridge CB24 5QE

Are you dreaming of a green Christmas?

More and more of us are thinking about the impact of our shopping habits on the environment. So how do we navigate a time of year often associated with excess?

SHOP SMARTER (THE 'REDUCE' IN REDUCE, REUSE, RECYCLE)

The most environmentally friendly option is to not buy things that aren't needed. But that doesn't mean Christmas is ruined! Here are some ideas:



FOOD

- Make a meal plan and shopping list and stick to it! Check out the tips, leftovers recipes and portion calculator at www.lovefoodhatewaste.com



GIFTS

- 'Secret Santa', where a group each draws one name from a hat, and each gives and receives only one gift, can be fun and reduces the amount of shopping.
- Experiences are great. For example, a spa gift voucher plus the offer to babysit, or tickets to see a show.
- A carefully thought out donation to charity could be an option. For inspiration, search online for an article called The Small White Envelope by Nancy W. Gavin.



SEASONAL SUPPLIES

- Christmas decorations can last a lifetime, if you choose durable ones. Use fake trees for as many years as possible. Real trees with roots can be hired or kept in your garden year-round for reuse.
- Do you really need crackers? Many are disappointing, and everything ends up in the bin after dinner! Reusable crackers are available online.
- Use fabric and real ribbons to wrap gifts that will be opened while you're there. There's no mess to clear up, and they last a lifetime!



REUSE AND RECYCLE

- After shopping smarter, it's about making the most of what you do have.
- Keep wrapping paper to use again next year. Brown paper packing from online deliveries is particularly useful for wrapping large or oddly shaped gifts and can be jazzed up with ribbon.
 - Use evergreens like holly, ivy or mistletoe as decorations. They can all go on your compost heap or in your green bin after Christmas, as can real Christmas trees which have been cut up.



The Arthur Rank Hospice Charity will collect Christmas trees, for a donation, from parts of the district



RECYCLE YOUR CHRISTMAS TREE

The Arthur Rank Hospice Charity is running its annual Christmas Tree Recycling scheme again in January. On 9, 10 and 11 January 2020 the team of volunteers will be collecting trees from postcodes CB1, CB2, CB3, CB4, CB5, CB22, CB23 and CB24 in exchange for a donation.

The trees are taken to the waste management park near Waterbeach for composting. If you would like your tree collected, or can spare a few hours to volunteer, visit www.arhc.org.uk/treerecycling or call the Hospice fundraising team on 01223 675888. Registrations close at 1pm on Wednesday 8 January 2020.

Last year 1,800 trees were collected, raising more than £26,000! After costs, 90% of the monies raised will go to the Hospice, with 10% donated to other local charities.



WHEN NOT TO RECYCLE!

Don't practise 'wishful recycling' – not everything can be recycled in your blue bin.

X Glittery or metallic wrapping paper / crackers / cards

These cause problems at the paper mill. Keep bits that can be reused next year and put the rest in the black bin.

X Plastic ribbon

Not recyclable. Reuse or put in the black bin.

X Paper napkins

Usually dirty, and the paper is not suitable for recycling. Put in the green bin.

X Clothes and shoes

These cause jams in sorting machinery and get dirty in bins so can't be recycled. Recycle at a clothing bank instead such as the ones you see in supermarket car parks.

X Toys, including from crackers

Pass on or donate to charity shops if suitable, put in black bin if not.

X Electrical items e.g. games

Pass on if suitable, take to a Household Recycling Centre to recycle with electrical items if not.

X Crisp packets and tubes

Check www.terracycle.com for a recycling collection point near you or put in the black bin.

X Packaging containing food or liquid

Remove all food or liquid from packaging before recycling the packaging. All food waste can go in your green bin.

Check our recycling and rubbish A to Z at www.scams.gov.uk/bins/what-goes-in-which-bin for advice on what to do with hundreds of items.

SHIRE TREES LIMITED

www.shiretreesurgery.co.uk

- Professional Arborists
- Forestry services
- Hedge Maintenance
- Seasoned Firewood for sale
- Stump grinding
- Fully insured/Qualified
- All aspects of tree work

01763 220880 - 07725 808887
shiretreesltd@gmail.com

WESTRIDGE
Property Consultants

**Architecture
Planning & Building Regulations
Project Management**

We are a Chartered Building Consultancy providing professional services and construction advice on Extensions, Alterations, Refurbishment and New Build projects.

Regent House, 133 Station Road, Impington, Cambridge.

Tel: 01223 233 600
www.westridgeconsultants.co.uk

WheelieFreshBins

A wheelie bin cleaning service for both domestic and commercial customers.

Book a regular or one off clean.

Tel: 01223 277747

**Book online at
www.wheeliefreshbins.com**

Find us on 



WHAT A DIFFERENCE A DAY MAKES

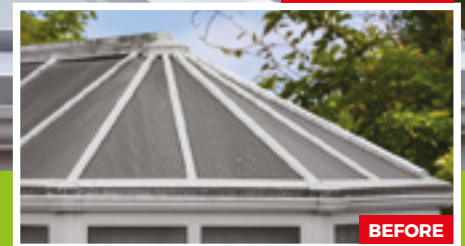
**SUBSIDIES
AVAILABLE**

*Quote Ref
HN0919

"It's the best home improvement we have ever made. Our conservatory is now our dining room in the garden."

Mike Millis,
Middleton On Sea

LATER THAT DAY



BEFORE

There are many reasons to change your conservatory roof with Green Space UK

INSTALLED IN 1 DAY

"What a difference a day makes as the saying goes, and yes, that's all it took to install."

Mr & Mrs Barber, *Wells*

WARMER IN WINTER

"There is no doubt that the conservatory is much warmer than previously, and no, the room is not darker either!"

David Birch, *Chichester*

USABLE ALL YEAR ROUND

"The conservatory is now used throughout all seasons of the year and is far more comfortable to sit in whatever the weather outside."

Mr & Mrs Gibson, *Portishead*

COOLER IN SUMMER

"You could have fried an egg on the table in the summer, I now look upon the conservatory as a new room. It is quiet, restful and cosy."

Carol Doyle, *Surrey*

REDUCES ENERGY BILLS

"I've already turned the underfloor heating down. Lovely job guys, thank you!"

Anne Bird, *Bristol*

QUIETER IN BAD WEATHER

"For the first time in 10 years we do not have to close the door to the conservatory when it rains."

Mr & Mrs Bailey-Webb, *Warsash*

SUBSTANTIAL SUBSIDIES AVAILABLE

We're planning to make insulation a must have addition to every conservatory across the UK. We are therefore offering a **SUBSTANTIAL SUBSIDY** to a limited number of suitable properties in selected areas.

To find out more about the benefits that the Green Space system can offer and see if your conservatory is suitable for any potential subsidies, contact us now.



Checkatrade.com GRAND DESIGNS LIVE ideal FCA FINANCIAL CONDUCT AUTHORITY

For a free quote call:

0800 65 25 157

www.greenspaceconservatories.co.uk



*Finance subject to status, T&C's apply.
Subsidies are limited by area and not guaranteed. Putting off your enquiry could reduce the potential subsidy available to you

Stay warm and green this winter

As winter weather sets in and temperatures dip, we're doing our best to keep everyone living in our thousands of Council properties warm but green.

We're committed to improving the energy efficiency of all our properties.

It's a big job as we own and maintain more than 5,500 properties. All those with cavity walls have had insulation fitted, and most of our homes with solid walls have had internal or external insulation fitted. Through both methods, tenants are cutting energy bills by keeping heat in and reducing carbon emissions.

In total, insulation works we've carried out are estimated to have saved more than 4,000 tonnes of CO2 a year. That's enough to fill more than 24,000 double decker buses. Alongside these insulation efforts, wherever possible we've upgraded lighting to greener LED options. We also have a programme to replace ageing and less efficient boilers with greener options. Plus, we're installing renewable products such as air source heat pumps and solar panels where we can.



External wall insulation keeps heat inside your home

Cut your bills

There are simple steps all householders can take to cut energy bills and reduce carbon emissions.

- Compare your energy tariff: switching to a new supplier can save money. Try and choose one that offers green tariffs
- Request a smart meter from your supplier to track energy use
- Don't leave appliances on standby. Switch them off
- Have a room that's not always in use? Then fit a thermostatic radiator valve so you can turn it up and down as you need to
- Turn your heating down by one degree. According to the Energy Saving Trust, this could save up to £75 a year in a typical home
- Replace lightbulbs with LEDs or energy saving ones
- Use draught-proof strips to plug gaps around doors and windows



New, energy-efficient boilers help reduce energy bills

Struggling to pay?

According to National Energy Action, around 4 million UK households are in fuel poverty. The charity runs the Warm and Safe Homes Advice service. This offers online, telephone and face to face support for householders unable to pay energy bills. They can give advice about applying for the Government's Warm Home Discount scheme, provide support with accounts including fuel debt and much more. Visit www.nea.org.uk/advice or call 0800 304 7159.



Prevent heat loss in your home and drive down energy bills

To cut energy bills, you need to know where your home is losing heat. A thermal imaging camera is a great way to do this – and you can borrow one from us for free. Just point it at your home to see gaps in insulation, draughts and heating problems which are usually invisible. The cameras are easy to operate. To borrow one, email thermal.imagery@scambs.gov.uk or call 03450 450 063.

Fix your old stuff and help the environment at a Repair Café

With environmental awareness continuing to rise, saving your old stuff from ending up in landfill by getting it fixed at a Repair Café is becoming increasingly popular.

These events, which we help to establish, are all about repairing items that may otherwise be buried in landfill. Repair Cafés fix household items, reduce waste and teach repair techniques at the same time.

There's no charge to take your item to be fixed, but donations are always welcome as they help keep Repair Cafés running. As well as fixing your broken item, there's also the bonus of people coming together to help each other at a community event. Many have cakes and drinks to buy too. There are no promises and no guarantees, but if something can be saved the repairers will give it their best efforts.



Broken Christmas decoration?
Get it fixed at a Repair Café!

What can be repaired?

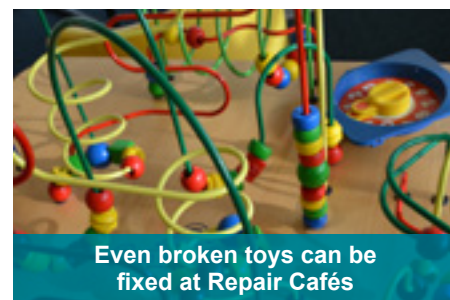
You can pretty much bring anything that you can carry, if it won't make a mess at the venue. Typical examples include bicycles, clothes, small electrical appliances, lamps, toys, mobile phones, printers and jewellery. You can even bring along something if it's not broken, but just needs cleaning.

The green benefits

Throwing things away unnecessarily is a big problem. Many items that end up buried in landfill will take decades or centuries to break down, producing harmful gases like carbon dioxide and methane. These both contribute to global warming. Some items will never, ever break down so just sit underground forever. With local and global populations rising, small changes like repairing things instead of throwing them out really help.

Where are they?

Groups like Cambridge Carbon Footprint (CCF) and Transition Cambridge have worked hard to make Cambridgeshire the Repair Café hub that it is today. Repair Cafés are regularly held in villages across the district. They currently run in places including Cottenham, Barrington, Cambourne, Histon, Waterbeach, Girton, Fulbourn and Sawston. We help to set them up and then they are taken on by Cambridge Carbon Footprint under their Circular Cambridge initiative. Find out where and when your closest one will be held next at www.circularcambridge.org/repaircafe



Even broken toys can be fixed at Repair Cafés

How to start a new Repair Café

We're keen to support Parish Councils or community groups thinking about running a Repair Café, be it promoting the event or offering advice to get it up and running. We can help you ensure you've chosen the right venue, got enough skilled repairers lined-up and thought about how to publicise it.

We are part of the Cambridgeshire Repair Café Network. This is a partnership between us, Cambridge Carbon Footprint, Transition Cambridge and local Repair Café organisers.

For further information or advice contact emma.dyer@scambs.gov.uk or call 01954 713344.



Broken electrical items are a common sight at Repair Cafés



Would you like your Oven, Range or AGA Gleamed?



We'll come to your home and deep clean your Oven, AGA, Range, Hob, Grill and Extractor until they Gleam. We can also clean your BBQ. Our unique process is mess, odour and fume free using only organic products within your home. All work is covered by the OvenGleamers Satisfaction Guarantee.



**Call Now On:
01223 750909**

www.ovengleamers.com
Ovens | Ranges | AGAs | Hobs | Extractors | BBQs



Would you like to join our team of Oven Gleamers Franchisees in the Cambridgeshire area?

Just contact Andrew Scott, who is one of our existing Franchisees, by email at **andrew.scott@ovengleamers.com**



An OvenGleamers Franchise offers the chance for self-employment in a fast-growing and successful industry offering a fantastic service to customers who really appreciate the quality work an OvenGleamer Franchisee delivers. Very good earnings are possible entirely linked to the effort you put in. So if you have always wanted to be self-employed or maybe you are suddenly facing redundancy and are fed up with being a wage-slave, this could be the opportunity for you. As a Franchisee you set your own hours, set your own prices, manage your costs and your marketing and have the support of the Franchisor behind you if needed.

www.ovengleamers.com
Ovens | Ranges | AGAs | Hobs | Extractors | BBQs



**Sigma
Office Ltd**

Computers

for home and business

With a personal touch

- › New PCs & Laptops, MS Office and Windows 10 advice
- › Turbocharge your PC, get our SSD hard drive upgrade, up to x10 Faster !!
- › Protection for your data and your children online!
- › Servicing, repairs & updates at sensible prices
- › Quality equipment to suit your needs & budget
- › Customer support; at home, telephone & online
- › Website, domain and email hosting
- › Networks for home or business. Whole home WiFi.
- › VOIP - "Internet" telephone systems



Get your own IT Support Dept. from Sigma Office Ltd

Call - 01462 742783

Info@sigma-office.net
The Village Hall, Ashwell, Herts, SG7 5PJ
www.sigma-office.net

M.I. TICKNER DECORATORS

Local company. Local tradesmen.

2 Hanslope Close
Papworth Everard
Cambridge
CB23 3AN

www.miticknerdecorators.com
miticknerdecorators@gmail.com



Call Media Shed on 020 3137 9119

LOVE
CAMBRIDGE

EXPLORE | Cherish | STAY

Available to
BUY NOW

GIFT CARD

LOOK
What's
NEW

The Love Cambridge GIFT CARD

With over 200 participating businesses in Cambridge the choice of where to spend is huge – shopping, dining, leisure and much more - making the Love Cambridge Gift Card the perfect present for everyone!

For a full list of businesses signed up to accept the Love Cambridge Gift Card please visit

www.love-cambridgegiftcard.com



Available to purchase online at
WWW.LOVE-CAMBRIDGEGIFTCARD.COM

delivered by
cambridgebid

Our reputation is growing

Every home
we sell or let, we
will plant a tree locally

IN PARTNERSHIP WITH



Bush is one of Cambridge's leading sales and letting agents, but did you know we also offer expert advice and a professional service to property owners across South Cambridgeshire?

Discover the **Bush** difference and join us
on our **GREEN** journey

bush
sales

Established.
Independent.
Passionate.

bush
lettings

01223 246262
bushsales.co.uk



01223 508085
bushlettings.co.uk

DISCOVER



DISCOVER

HYPERION

HOME & ANTIQUES CENTRE
St Ives

Over 25 independent dealers

Wide choice and variety

Located in lovely riverside town

Next to public carpark & bus station

OPEN EVERY DAY

Mon-Sat 9.30 - 5.00

Sun 10.00 - 4.00

Station Road, St Ives, Cambridgeshire, PE27 5BH

01480 469101



Hyperion Home & Antiques Centre

Bin collection calendar



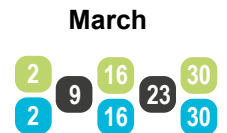
Bins must be put out by 6am on your collection day. Close lids fully. Please report missed collections between 3.30pm on collection day and 3.30pm the next working day. For advice on how to leave out extra recycling for collection and other policies, see www.scams.gov.uk/gov.uk/bins

Green bin Black bin
 Blue bin Later collection date

Reminder: the last fortnightly green bin collections before our monthly winter schedule starts take place during the weeks commencing 9 and 16 December. We move back to fortnightly green collections on the weeks starting 2 and 9 March.

MONDAY A -

Balsham, Carlton, Cherry Hinton, Fulbourn, Great Wilbraham, Horseheath, Little Wilbraham, Six Mile Bottom, Stow-cum-Quy, Teversham, West Wickham, West Wrating, Weston Colville



MONDAY B -

Babraham, Bartlow, Castle Camps, Great Abington, Hildersham, Linton, Little Abington, Pampisford, Sawston, Shudy Camps, Whittlesford



TUESDAY A -

Duxford, Fowlmere, Great Chishill, Great Shelford, Harston, Hauxton, Heydon, Hinxton, Ickleton, Little Chishill, Little Shelford, Newton, South Trimpington, Stapleford, Thriplow & Heathfield



TUESDAY B -

Barrington, Foxton, Melbourn, Meldreth, Shepreth



WEDNESDAY A -

Abington Pigotts, Barton, Bassingbourn, Grantchester, Guilden Morden, Harlton, Haslingfield, Littleton, Orwell, Shingay-Cum-Wendy, Steeple Morden, Whaddon, Wimpole



WEDNESDAY B -

Arrington, Caldecote, Comberton, Coton, Croydon, Kinglsey, Great Eversden, Hardwick, Hatley, Kington, Little Eversden, Little Gransden, Longstowe, Madingley, Tadlow, Toft



THURSDAY A -

Bourn, Boxworth, Cambourne, Caxton, Childerley, Conington, Croxton, Elsworth, Eltisley, Graveley, Knapwell, Papworth Everard, Papworth St Agnes



THURSDAY B -

Bar Hill, Dry Drayton, Fen Drayton, Girton, Lolworth, Longstanton, Northstowe, Oakington, Over, Swavesey, Westwick



FRIDAY A -

Cottenham, Histon, Impington, Landbeach, Orchard Park, Rampton, Willingham



FRIDAY B -

Chesterton Fen, Chittering, Fen Ditton, Homingsea, Milton, Waterbeach



What goes in your blue bin?

Yes

Recycle ✓ Clean ✓ Empty ✓ Don't bag it



Cardboard



Paper & magazines



Tins, cans & foil



Aerosol cans



Glass bottles & jars



Cartons



Plastic pots, tubs, trays & bags



Plastic bottles



Shredded paper (in envelope or clear sack)

Occasional extra recycling

One clear sack and/or a bundle of cardboard that would fit in an empty blue bin can be left next to your bin for collection, providing the crew has sufficient space on the round. Or order an additional blue bin for free via our website.

No

- ✗ Black bin bags or rubbish
- ✗ Nappies, tissues, kitchen paper, wipes & sanitary waste
- ✗ Polystyrene
- ✗ Glasses, flat glass or glass dishes
- ✗ Mirrors, Pyrex, plates/crockery

The following can be recycled elsewhere – check our website.

- ✗ Clothing and textiles
- ✗ Food, liquid or garden waste
- ✗ Wood, plasterboard & DIY waste
- ✗ Furniture or electricals
- ✗ Scrap metal e.g. pans
- ✗ Hard plastics e.g. bucket
- ✗ Crisp packets



What goes in your green bin?

Yes

Compostables



Cooked/uncooked food waste (including meat, fish and dairy)



Untreated wood and sawdust



Garden waste



Used paper tissues and kitchen paper

No

- ✗ Plastic & plastic bags
- ✗ Compostable bags e.g. Biobags
- ✗ Nappies, wipes and sanitary waste
- ✗ Soil or stones
- ✗ Painted or treated wood
- ✗ Cat or dog waste
- ✗ Plant pots and seedling trays



What goes in your black bin?

Yes

Reduce

Please try to reduce other rubbish that cannot be recycled or composted



General rubbish including nappies, wipes, sanitary waste, polystyrene, broken crockery or glassware (wrapped)

No

- ✗ Rubble/bricks
- ✗ Soil
- ✗ Very heavy items
- ✗ Electrical items
- ✗ Batteries

Take these items to Household Recycling Centres at Milton or Thriplow.



Let's S.C.R.A.P. fly-tipping

Since the start of our campaign to S.C.R.A.P fly-tipping, which was featured in the last edition of South Cambs Magazine, we've seen an increase in residents reporting fly-tips. Thank you and please keep it up!

Household waste

There were more than 900 fly-tips across South Cambridgeshire last year, and many originated from well-intentioned households.

Often, this happens when residents allow their waste to be taken away by unlicensed carriers who simply dump their rubbish in the countryside. Don't fall into this trap.



Waste within this fly-tip clearly came from a household



Use your bins. It sounds obvious, but most of your household waste can go into your wheelie bins. If you don't have enough blue bins, you can order up to three extra ones for free, as well as find out what can go in them, at www.scambs.gov.uk/bins



Use recycling banks, like those in supermarket car parks, for clothing. Use Household Recycling Centres for many other items which can't go in your bins. Find out locations, opening times and what's accepted at www.cambridgeshire.gov.uk/hrc but remember if sites are closed or banks are full, never leave items outside, as this is fly-tipping!



Suitable items in good condition, like furniture, **could be sold or given away** via Gumtree or Freecycle. Some charities like Emmaus and British Heart Foundation will collect large items from your home for a small donation.



Use our bulky waste collection service. You can pay for us to collect large items such as washing machines from outside your house. See www.scambs.gov.uk/bins/bulky-item-collection-service



Use a registered waste-carrier. It's fine to pay a company to collect your waste, but always check they have a valid waste carriers licence from the Environment Agency. Check online at <https://environment.data.gov.uk/public-register/view/search-waste-carriers-brokers> or call 03708 506 506.

Business waste

If you run a business which produces waste, this must be disposed of correctly. **Business waste must not be put in household collections, and Business Rates do not cover waste disposal.**

We offer business recycling and waste collections at competitive rates, with the frequency of collection and type of container tailored to your business needs. See www.greatercambridgewaste.org for more information and to contact us for a quote. You must not take business waste to a Household Recycling Centre.

Head of the Greater Cambridge Shared Waste Service, Trevor Nicoll, said:

"I want to thank every resident that's helping us to S.C.R.A.P fly-tipping by disposing of their waste responsibly and legally or reporting fly-tips to us. Fly-tips are a blight on the environment, and we're determined to do all we can to tackle the issue."



To find out more and report fly-tipping, visit www.scambs.gov.uk/fly-tipping

PEST PROBLEM?

LOCAL, PROFESSIONAL, TRUSTED

DRE Pest Control



Rapid, qualified and safe pest control.

Residential, farms, commercial premises, hotels, hospitals, schools & businesses.

Removal of **rats, mice, ants, fleas, cockroaches, & wasps.**

Are you looking for **one-off, emergency or long-term** pest management solutions?

Contact
DRE Pest Control
today!

07789 502556

01954 230708

drepestcontrol.co.uk

info@drepestcontrol.co.uk



19 WALLMANS LANE
SWAVESEY
CAMBRIDGE
CB24 4QY



Shelford TREE SERVICE

- **Tree Felling & Pruning**
- **Crown Reduction**
- **Thinning**
- **Site Clearance**
- **Hedge Cutting**
- **Qualified and insured**

For a free no obligation quote contact Jonathan :

07743 406 569

shelfordtreeservice@outlook.com

www.shelfordtreeservice.co.uk

City & Guilds
NPTC



The
Form
Practice



We are a complementary health practice, hidden away in a peaceful setting in Hardwick. Located in a beautifully renovated barn with free parking.

- | | |
|--------------------------|---------------------------------|
| ◆ Osteopathy | ◆ Fully equipped Pilates studio |
| ◆ Massage | ◆ Fitness & Personal Training |
| ◆ Pelvic floor rehab | ◆ Mat Pilates |
| ◆ Hypnotherapy | ◆ Yoga |
| ◆ Bio Energetic Medicine | |



www.theformpractice.com

info@theformpractice.com
01954 214473

Main Street, Hardwick
CB23 7QS

Delivering an ambitious plan for Council houses

Our Housing department's New Build Team have been working to deliver our ambitious target of doubling the number of Council homes built annually in South Cambridgeshire.



An impression of how the Urban Splash neighbourhood at Northstowe could look

Given the growing population and shortage of affordable housing options, we've set targets to build more Council homes.

Currently, we have 91 new Council homes being built on sites across this district, including in Balsham, Caldecote, Foxton, Great Abington, Hardwick, and Waterbeach. These schemes will deliver a mixture of affordable rent and shared ownership homes, based on local need and demand.

In addition to the 91 homes currently being built, we also have a pipeline of a further 199 homes that will be completed by 2023. This pipeline will see new homes built in Impington, Northstowe, Sawston, Teversham, Toft, and West Wickham.

The schemes to be built in Northstowe and Sawston will be the biggest the Council has brought forward since restarting our building programme in 2015, providing 81 and 63 homes respectively.

The largest of these schemes, at Northstowe, will be built using Modern Methods of Construction (MMC) meaning that elements will

be constructed in a factory before being assembled on site. These modern building methods will allow us to provide homes with greater energy efficiency standards that can be built more quickly. The new homes at Northstowe will be delivered in partnership with leading MMC developer Urban Splash, and the Government's housing accelerator Homes England. The scheme will provide 21 affordable rent apartments and 60 age-exclusive apartments for over 55s, designed to support long-term independent living and active lifestyles. Construction work is expected to start in the spring of 2020.

Our second large-scale scheme will be delivered in Sawston, on the south side of Cambridge. This site will provide 44 homes for affordable rent, and 19 as shared ownership. We're pleased to be working with local developer Hill to bring forward this site, which will benefit from solar panels and landscaped green spaces.



An impression of how new Council homes at Sawston could look

UP TO
**30%
OFF**

**KITCHEN ORDERS CONFIRMED BY
31ST DECEMBER 2019***

(INSTALLATION CAN BE BOOKED FOR ANY DATE) *T&C's APPLY



EVERYTHING...
including the kitchen sink!

YOUR KITCHEN DESIGNED, SUPPLIED, FITTED

We are a family run business with over 30 years experience and our aim is to provide a stress free, personal service to our local customers, offering products to suit any taste or budget and all the services you may require from start to finish. We are here to help improve your home in any way possible.

***Royston Kitchens
& Bathrooms Ltd***

**KITCHENS | BATHROOMS | TILES
FLOORING | PLUMBING & HEATING**

**FREE HOME APPOINTMENTS | FREE QUOTATIONS
FREE 3D DESIGN | FULL INSTALLATION AVAILABLE**

UNIT 2. LUMEN ROAD. ROYSTON. SG8 7AG

01763 245888

info@roystonkandb.co.uk

www.roystonkitchensandbathrooms.co.uk



£141 million boost for new town community facilities

We've reached a legal agreement for £141 million of new services, facilities and transport improvements to come forward alongside the first 6,500 homes at a new town north of Waterbeach.

The Section 106 agreement applies to Urban&Civic's plans for the former Waterbeach Barracks site. This is the western half of the site that is allocated for a new town in our existing Local Plan.

The agreement will see many upgrades and community facilities come forward at different stages, including:

- At least 30% affordable housing
- Schools
- A health centre
- Open spaces with outdoor pitches
- A contribution towards a new leisure centre, including a swimming pool
- Community centres and a library

As part of the process £16 million worth of transport upgrades in and around Waterbeach have been agreed. Amongst these are:

- Junction and widening improvements to parts of the A10
- New pedestrian and cycle routes
- Improvements to the existing A10 shared cycleway and footpath
- A bridge across the A10 for pedestrians and cyclists
- Traffic management measures
- Improvements to local bus services and stops

Planning permission has already been given for the relocation of Waterbeach Railway Station. This will see a modern, accessible station built on land between Cody Road and the Fen Line railway.

Further detailed planning applications that set out the more precise arrangements for the site – called reserved matters applications, which include the appearance, landscaping, layout and scale – will be submitted to us by Urban&Civic in future.

A separate application for up to 4,500 new homes on the eastern half of the planned new town site has been submitted by different developers, RLW Estates. Their application, which covers land between the former barracks and railway line, is being assessed by the Council.



Find out more about the Cambridgeshire and Peterborough Combined Authority's plans to upgrade the A10 at www.cambridgeshirepeterborough-ca.gov.uk/about-us/programmes/transport/a10

Profile: planning your next career move?

Did you know you don't have to have a planning background to build (see what we did there) a career?



Tom Gray (pictured above), one of our planning officers who joined us around a year ago, has been a teacher, helped people learn water sports and worked on satellite imagery in his previous careers before turning his hand to planning.

He said: "Although I have a degree and Masters in Geography, I have found that the skills I have learned in other careers have been really useful in this role. I really enjoyed my jobs before coming into planning, but fancied doing something different.

"Planning offers you the chance to train as you learn and customer skills are really high on the list of what you need. The role has huge variety and is fast paced and a good job for those who thrive working on different things."

The Greater Cambridge Shared Planning Service is a partnership between us and Cambridge City Council and planning officers cover work across the two areas.

There are a number of teams within planning, including Development Management where Tom works. The team deals with applications for extensions and small developments. Other teams focus on policy, or how new communities develop, such as Northstowe and the new town planned north of Waterbeach.

Greater Cambridge is a unique place to be a planner as it is one of the fastest growing economies in the country. This means there are exciting projects ranging from large new towns all the way through to nationally significant research industry expansions.

Tom said: "There are good career progression opportunities and a good structure to help you gain knowledge. When you start you work on more straightforward applications such as small extensions to homes, but within

a year I have been working on sites for new homes and some interesting business developments too, such as the one at Wimpole Hall. You also have a more experienced planner as a mentor who signs off your work.

"The variety in the role means I am out and about at least once a week to visit a site or talk to applicants which is always enjoyable."

Get in touch

We are looking for people who have a degree or equivalent qualification. The qualification does not need to be in planning.

The biggest skill we are looking for is a passion for customer service.

The starting salary for a planner is £24,427. Many planners can progress into more senior roles and be earning over £30,000 within five years.

For an informal chat about a career in planning, call Carley Bartley, Recruitment Co-ordinator, on 01954 713387 or email carley.bartley@scambs.gov.uk

JPT DESIGN CONSULTANTS LTD.

Architectural Drawings for Residential Planning and Building Control Applications

NEED TO CREATE MORE SPACE IN YOUR HOME?

Let us come and tell you what's possible!

Extensions - Conservatories - Loft or garage conversions - New build projects



WE DON'T STOP THERE!

We can draw your plans for you, apply for planning permission and building control approval.



Before



Concept Design



After

WANT TO KNOW IF YOU CAN AFFORD TO DO IT?

We can also provide estimated building costs so you know whether the ideas are within your budget.

Contact us for a free no obligation consultation on:

T: 01954 717442 E: Info@jptdesign.co.uk

Visit our facebook page to view previous projects - JPT Design Consultants

www.jptdesign.co.uk

The Studio, 23 Halifax Road, Upper Cambourne, CB23 6AX



**BUILDING EXCELLENCE
AWARDS 2017
REGIONAL FINALIST**



Avoid unnecessary delays and costs when applying for planning permission

A quarter of planning applications are costing more and taking longer than they need to because applicants haven't supplied all the required information.

Planning applications cost from £206 and can take around nine to 14 weeks to be processed.

Planning permission is required for several activities. These include building and engineering works and changes to use of a building or land, display of advertisements and alterations to listed buildings, and demolition of buildings in conservation areas. The first stage of the application process is validation.

When applicants submit their planning application online or on paper, it is first assessed by our validation team, within five days.

The validation team checks all relevant documents and fees are covered. Only when they're happy will the application be passed on to be determined.

If all requirements aren't met and the application can't be validated, the applicant will be contacted and given 28 days to resolve the issue.

The main issues that are delaying a quarter of applications from being validated are:

1. Missing fees
2. An incomplete or incorrect application form
3. Missing or incorrect plans

Tips to ensure your application isn't delayed

It is easy to check online what fee needs to be paid for your application. Visit www.scambs.gov.uk/planning/planning-fees-and-charges

For help with application forms and a checklist of what plans need to be included in your application, read our guidance and checklist at www.scambs.gov.uk/planning/planning-checklists-forms-and-guidance-note or view our FAQs online too.

Homeowners with other questions can book a free 15-minute consultation with our duty planning officers in advance by calling 03450 455 215.

It's easy as 1, 2, 3C to apply for Building Regulations

While planning permission relates to the correct use of land or how buildings look and their effect on their surroundings, 'building control' is instead concerned with standards for the design and construction of buildings. This covers health and safety and other factors like fuel and power conservation and whether facilities are accessible.

For many types of building work, both planning permission and building control approval are required and, even where planning permission may not be required (for instance for some internal alterations), building control approval may still be needed. Homeowners undertaking building works should contact building control before any work starts on site.

We have our own in-house building control team in partnership with Cambridge City Council and Huntingdonshire District Council: 3C Building Control. The first hour of advice is free and they are always happy to help.

Email buildingcontrol@3csharedservices.org visit www.3csharedservices.org/building-control or call 0300 7729622.



3C Building Control's mascot, BC, visits a building site

A photograph of a kitchen before renovation. It features yellow cabinets, a black countertop, and a tiled backsplash. The countertop is cluttered with various items like a scale, a bucket, and papers. A window above the sink shows some potted plants.

the original
TOP
that fits on
TOP

**TIRED OF YOUR OLD KITCHEN?
DON'T START OVER, DO A MAKEOVER.**



Give your kitchen a stylish new look without going through all the disruption of ripping out your old one. Our bespoke worktops and replacement doors are made to cover existing surfaces precisely, leaving a hardwearing and luxurious finish. Our skilled team can often transform your kitchen in as little as a day.

 **GRANITE**[®]
transformations

**KITCHEN & BATHROOM
MAKEOVERS**

To find out more or book a free home consultation contact

CAMBRIDGE SHOWROOM: **01223 915 899**, 53 High Street, Trumpington, Cambridge CB2 9HZ

Proud members of  **Checkatrade.com** | **9.90** SCORE
Where reputation matters

granitetransformations.co.uk

Taking a lead in dog welfare

It's over a year now since new rules designed to improve the welfare of animals came into force.

Changes due to the Animal Welfare (Licensing of Activities Involving Animals) Act 2018 include the need for all boarding kennels, and anyone looking after dogs in their homes or at a dog day care facility, to be licensed by us. You can always ask to see this licence.

Also, most dog breeders, whether a kennel or a home breeder, must be licensed under the new act. This is to ensure they're fit and proper people to breed dogs and are looking after their canines to a high standard.

If you're going to buy a puppy, always ask to see a breeder's Council-issued licence before going ahead. If they can't show you a licence, contact us to confirm they are registered. Don't accept any excuse for them not being licensed.

Additionally, if you're visiting a breeder to view puppies, it's now law that the mother of the puppies is seen with the litter.

If you're not sure whether your business now needs a licence, or want to ensure companies you're using are licensed, contact us on licensing@scambs.gov.uk or 03450 450 063.



For more information visit www.scambs.gov.uk/animal-licences

EU Settlement Scheme

If you're an EU, EEA or Swiss citizen, you can apply to the EU Settlement Scheme to continue living in the UK after 30 June 2021.

Full details of the Settlement Scheme, including how to apply, are available in 26 European languages at www.gov.uk/settled-status-eu-citizens-families

EU citizens will need to register under the scheme by 30 June 2021 if the UK leaves the EU with a deal, but by 31 December 2020 if no deal is agreed.

Help and information about an EU Settlement Scheme application is available by

phone from the EU Settlement Resolution Centre on 0300 123 7379. Applicants can also contact the Government's Assisted Digital Service, which offers telephone and face to face support in completing an online application form, by calling 03333 445 675.

If an application to the EU Settlement Scheme is successful, it will mean the applicant is granted either settled or pre-settled status. With both statuses, a person will be able to travel in and out of the UK, work in the UK, use the NHS, enrol in education or continue studying and, if eligible, access public funds such as benefits and pensions.

We have pulled together some further Brexit advice for residents. This includes details of local groups that can support residents through the EU Settlement Scheme application process. You can find further details at www.scambs.gov.uk/housing/brexit-information-for-residents



Community Chest topped-up

Even more funding is now available for local good causes through our popular Community Chest scheme. We've added £20,000 to the pot, taking the total amount up for grabs to just over £49,000.

Recently, funds have been handed out to Coton Village Hall, which received £1,000 to help upgrade the audio-visual equipment. 1st Papworth Scouts were given £1,000 to buy dining shelters, tables and benches. Gamlingay School's Out Club received £495 to help purchase a large timber shed.

Who can apply?

Local community and voluntary sector groups, charities and sports clubs can bid for up to £1,000 from the fund. Bids are reviewed on a monthly basis until March, or until the year's allocated funds have all been awarded.

Recent changes to the eligibility criteria give smaller Parish Councils a chance to bid for funding to support their community projects.



A children's play train is one good cause funded by our Community Chest

What can Community Chest funding go towards?

We're happy to contribute funds to community activities or projects that help us deliver one or more of the following aims:

- Promote healthy and active communities
- Enable inclusive communities
- Develop skills
- Enhance the natural environment

All projects we fund must also meet local need, leave a legacy for the community and ensure equality of access.

Applicants to the Community Chest scheme can be non-profit groups or organisations based in South Cambridgeshire or benefitting the district's residents.

We have funded the Community Chest scheme since 2011, handing out more than £550,000 in grants to local good causes in that time.



Abington Allotment and Leisure Gardeners Association received funding for a new shed

Help at hand for community groups

The Cambridge Council for Voluntary Service (CCVS), which we support, provides advice, assistance and training to voluntary groups and charities.

Whatever stage your community group or charity is at, they can help. If you're just starting up, they can advise on the type of group you could become, help with rules or constitutions, and provide sample policies to operate correctly, legally and safely.

Newly formed groups get one year's free membership of CCVS which entitles you to attend training courses as well as get help by phone, email or in person.

Most people volunteer because they have a passion, and few get excited about the necessary day-to-day running of a group. CCVS is there to make the task of running your group as simple and routine as possible.

Find out more at www.scambs.gov.uk/communitychest

For more information and to apply, visit www.scambs.gov.uk/communitychest or call 01954 713070.

For more information visit www.cambridgecvs.org.uk email enquiries@cambridgecvs.org.uk or call 01223 464696.

Fraud: how you can help us to combat it

Fraud costs taxpayers money and affects the services that we can provide.



What is fraud?

Claiming a benefit from us that you are not entitled to receive is fraud. This may be deliberate, or may arise from not telling us that your circumstances have changed. Please help to stamp fraud out. If someone you know is claiming something that they are not entitled to, please report it.

How to report fraud

To report housing fraud, visit www.scambs.gov.uk/report email tenancy.fraud@scambs.gov.uk or call 03450 450 051.

To report other types of fraud email fraud@scambs.gov.uk or call 03450 450 061.

Keep us informed – it's your responsibility

If you claim any kind of reduction towards your rent, Council Tax or Business Rates, it's your responsibility to let us know if you have had a change in circumstances that may affect this.

A change in income or a change in who is living in the household would always need to be reported to us if you are claiming any kind of reduction. If you have a change in your circumstances that you don't report, this could be considered as fraud.

Other examples of changes that would need to be reported include:

- Increased savings
- Working extra hours
- Someone moving in or out of your property
- Any absence from the property for more than four weeks (for those claiming benefits)

If you rent a Council property, under the terms of the tenancy agreement you can't move out and sublet your property. This would also be considered fraud.

For businesses in receipt of Small Business Rates Relief, you would need to let us know if you take on additional premises.

People who don't come forward to let us know when their circumstances have changed could end up repaying thousands of pounds as well as court-imposed costs and fines, or even receive a criminal conviction.

Anyone claiming support that they think they may no longer be eligible for should contact us as soon as possible. We will work with residents who approach us to agree a reasonable plan to recover any overpayments. Prosecution is always the last resort, so telling us as soon as possible is the safest way to avoid the situation worsening.

TIM PHILLIPS & Co. Ltd.

Accountants

EASY TO FIND US
Map on website
FREE PARKING



FREE consultation – No Obligation



INDEPENDENT Specialist Service

Small Businesses
Self Assessment
Personal Taxation

Accounts • Bookkeeping • VAT • Payroll • CIS
Tax Returns • Tax Calculations
Lettings • Higher-Rate Tax Payers

Cart House 2, Copley Hill Business Park, Cambridge Road, Babraham, Cambridge CB22 3GN

01223 830044

TPaccounts.co.uk

The South Cambridge Estate Agents.

**COOKE
CURTIS
& CO**

+44 (0) 1223 508050
40 High Street
Trumpington
Cambridge CB2 9LS
www.cookecurtis.co.uk

GAROLLA
**ROLLER
SHUTTER
DOORS**

Great For:
Space Saving
Kerb Appeal
Ease of Use
0800 468 1982

THERMALLY INSULATED ELECTRIC GARAGE DOORS

Garolla can save a lot of space inside your garage. Rolls up vertically into a box. Takes only 8 inches of headroom! Opens vertically so you can park up close to the door. Remotely open/close the garage even from inside your car.

Acoustic & Thermal Insulation

Brush Sealed Rails

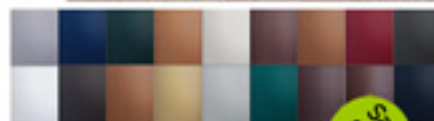
Pay on Completion

Two Remote Controls

18 Colours Available



Free Disposal of Old Door!



LIMITED OFFER - was £1354

NOW ONLY £895 INC. VAT & FULL FITTING

MADE TO MEASURE, CALL US NOW!

01223 902 355 07537 149 128

Phone Lines Open 7 Days a Week

Offer valid for openings up to 2.6m wide & inc. 2 Remote Keys, 55mm White slats, Internal manual Override

Save time and paper: view your Council Tax bills online

Did you know that you can sign up to receive and view your Council Tax bills online?

You probably already receive many other bills online, be they from energy suppliers, mobile phone companies or broadband providers, so why not add us to that list?

- You'll receive your bill as soon as it's available
- You'll always know where your bill is
- It saves paper, so it's better for the environment
- It's quick and easy to sign up

Register for your personal online account in My South Cambs. You'll find the link in the top right-hand corner of our website www.scambs.gov.uk

Once you've created an account or logged in, you can view your Council Tax information at any time.

The easiest way to pay your Council Tax

Most people pay their Council Tax by Direct Debit because it's the easiest and most hassle-free way to pay. If you don't already pay by Direct Debit and want to, you can now set this up online.

It is quick and easy to set up and once in place it will remain so until it is cancelled. There's no need to set a Direct Debit up each year.

We will always notify you of any changes to the amount to be collected in advance, and as long as your instruction is still held by your bank the payments will be adjusted automatically.

You can choose from two monthly payment dates when you pay by Direct Debit, giving greater flexibility. As the payment is collected automatically you can be sure not to forget or miss one.

To set up a Council Tax Direct Debit online just visit the Council Tax area of My South Cambs.

Register or sign in to My South Cambs at <https://mysouthcambs.scambs.gov.uk>



An innovation centre with added

POSITIVE IMPACT

**Looking for your team's new home?
Or space to co-work?**

Whether you need a fully serviced office, a flexible space to co-work, a virtual office business address or event and meeting rooms, we've got you covered.

We're proud to be different to other business centres. Our Future Business Centre is a community for start-ups and companies that focus on creating social and environmental

change. Come and join our community – a space for future focused businesses to thrive.

Fancy a tour? Drop us an email or give us a call, you'll be very welcome.



**FUTURE
BUSINESS
CENTRE**

Allia Future Business Centre
King's Hedges Road, Cambridge CB4 2HY

01223 781200 | hello@futurebusinesscentre.co.uk | www.futurebusinesscentre.co.uk

Protect your car
Enjoy your car

Jules Sturgess
AUTOMOTIVE

Everyday life can be a harsh environment for your car. We specialise in the installation of cutting edge, [self healing paint protection](#) films (PPF). Virtually invisible, it will protect your pride and joy from all manner of road damage giving you the peace of mind to enjoy your car without fear of devaluing it.

Based at a secure location just outside Cambridge, we work with some of the most prestigious car dealerships across the country. Our custom built booth and years of experience enables us to offer the best possible fitment, a league above the competition.

INVISIBLE PAINT PROTECTION



W: WWW.JULESSTURGESS.CO.UK **E:** INFO@JULESSTURGESS.CO.UK **T:** 0044 1223851554

Put your love in writing!
FREE Home Consultation



Look after your kids with a Will - fix who will look after them if something happens to you!

Worried what they'll inherit? Tax, care fees or legal costs might eat into their inheritance!

A range of Trusts can help protect your assets



Old age may bring problems. Disability, Alzheimers, etc. Look after your family by setting up Lasting Powers of Attorney.

They MUST be organised BEFORE loss of mental capacity



'We always meant to get our Wills done...'

Don't leave it too late to protect your family!

Dying without a Will can cause major expense and misery for your family



Don't let your family's last memory be a hefty bill for your funeral.

We check ALL main funeral providers so you can choose the best. **FREEZE** rising funeral costs today with a pre-paid funeral plan.

Just Wills & Legal Services Ltd
www.justwillscambridge.com 01223 655 646








Your local office for a national Legal Services company, Just Wills & Legal Services Ltd.



Sterling Cleaning Services provide a reliable and professional cleaning service throughout the Cambridgeshire area. With 30 years experience, our company and staff take great pride in all our services we can offer to you, and if you're not happy, we're not either.



- Services we can offer to you :
- Water-fed Pole System (Maximum Height, Minimum Risk)
- Windows
- Fascias
- UPVC
- Conservatories
- Gutters
- Patios & paved areas
- Solar Panels



01223 844 755
www.sterling-cs.co.uk
enquiries@sterling-cs.co.uk
 3 Joscelynes Stapleford Cambridge CB22 5EA

BEDEC
THE PAINT COMPANY



Innovators in Water-based Technology

WWW.BEDEC.CO.UK EMAIL: PAINT@BEDEC.CO.UK TEL: 01279 876657

It only takes ONE person to change your fitness level...
it's YOU!



JAZZERCISE

Get your first two classes for £5.00 with this Ad

Linton, Granta School
Mon & Wed 6.45pm

RA Butler School, Saffron Walden
Mon, Tue, Wed, Thur 7.00pm

For more info call Sarah on 07703 422394
Sarah.jazzercise@gmail.com

Let's Get Moving Cambridgeshire

If you want to improve your health and fitness but don't know where to start, Let's Get Moving Cambridgeshire can help.

Funded by Cambridgeshire County Council, it's a programme which we deliver in the district, aiming to improve people's health by getting them more active.

Classes established across the district as part of Let's Get Moving Cambridgeshire include buggy bootcamps, walking netball, walking football and new age kurling. We're always on the lookout for where we can help set-up new activities that are as accessible as possible. Many new groups go on to continue being run by the community independently without the need for ongoing help from us.

If you or anyone you know is interested in setting up an activity, or need support with an existing group, contact our Let's Get Moving Cambridgeshire coordinator Leah Collis by emailing leah.collis@scambs.gov.uk or calling 07508 020 678.

We recently began a new series of lunchtime mindfulness in nature walks (pictured - right). The walks took place in Milton Country Park and were led by a clinical psychologist and trained teacher of mindfulness based stress reduction. Watch this space for information about the next series.

Find out more at www.scambs.gov.uk/sport-health-and-wellbeing/lets-get-moving-cambridgeshire/



Keep your kids active and healthy during the school holidays

Have your children been inspired by 2019's sporting events? From Monday 6 January, you'll be able to register for a place on our upcoming holiday camps during the Easter break.

Athletics

Monday 6 and Tuesday 7 April

Wilberforce Road Athletics Track, Cambridge

Enjoy experiencing and competing in events including throwing, sprinting, jumping and endurance, all on an athletics track.

Netball

Wednesday 8 and Thursday 9 April

Impington Village College Sports Centre

Learn and practise netball skills in fun coaching sessions and be part of a team during friendly matches.

All camps:

- Run from 10.00am to 3.30pm • Are for children in Year 2 to Year 9
- Are for all abilities, boys and girls • Have coaches who are suitably qualified and appropriately checked
- Cost £25 per day or, if a child attends more than one day, or two or more siblings attend, the cost is £21 per child per day

To book a place visit
www.scambs.gov.uk/sportscamps

For further information email holiday.camps@scambs.gov.uk or call 01954 713070.

Get Active & Healthy 4 Life

Our exercise referral scheme, Active & Healthy 4 Life, is helping local people facing health challenges to become stronger and more active.

The scheme, which all residents can talk to their GP about, is for people who have been diagnosed with certain health conditions. It is a 12 week programme of prescribed exercise under the guidance of a specialist instructor who will be able to support you, and work with you to improve your health.

The programme is subsidised by us and so residents only pay £3 per session at a local gym, with initial and final assessments costing £8 each. The scheme runs in eight sports centres across the district so there's bound to be one near you.

Catherine Wightwick (pictured on the cross trainer) is one of many people to have benefitted from Active & Healthy 4 Life. Having experienced several weeks of lower back pain, she spoke to her GP and physiotherapist and was then referred to our scheme at Impington Village College Sports Centre. This is close to where Catherine works and so was a convenient location to exercise regularly. Once part of the scheme, she was given a personalised exercise programme to target her back pain. This included time on a cross trainer, exercise bike, weights and the treadmill. Catherine said:

"After just one month of this programme, I started feeling good following the sessions. My back pain is no longer a problem. It made a huge difference and really helped me feel powered-up after a session and meant I was much more productive at work too."

Having completed the programme, Catherine is now a fully signed-up member of the gym at Impington Village College Sports Centre and attends twice a week.

During the last financial year, 168 patients completed and benefitted from our Active & Healthy 4 Life scheme. Every single one continues to exercise regularly. 146 patients saw a decrease in body mass index, reducing weight and lowering blood pressure and cholesterol. It aims to help people with issues such as high blood pressure or cholesterol, depression, asthma, diabetes and many more.

For a referral form for Active & Healthy 4 Life, contact Helen Stepney on AandH4L@scams.gov.uk or 01954 713 070. For further details about the programme, visit www.scams.gov.uk/sport-health-and-wellbeing/exercise-referral-active-healthy-4-life-scheme





More than just a service



BATHROOM



HEATING



PLUMBING



RENEWABLE



Viessmann 100-W and Grant Vortex/Blue are Which best buys for 2017, Our Choice of Boilers for Many Years, showing them as a Quality and Reliable Product as rated by the Customer and Installer. The After Sales and Support is 1st Class. All Viessmann 100-W Boilers Installed by Shelford Heating now come with a Standard 10 Year Manufacturer Warranty as of 1st May 2018.



Shelford Heating is a long established Family owned Business undertaking around 10000 jobs annually within a 20 mile radius, Specialising in service and maintenance of all types of heating whether this is fuelled by Gas, Oil, LPG, Electric and Biomass all by directly employed, manufacturer trained and Gas Safe/ OFTEC registered technicians.

We also undertake general plumbing and are pleased to offer a full design and installation service for your new bathroom from start to finish.

We are fully conversant with the design and installation of heating systems, using the latest heating controls and modern condensing boilers as well as heat pumps and biomass boilers.

Viessmann Gas Boilers and Grant Oil Boilers offer the best Product Warranties, the minimum being 7 Year for Parts and Labour (Manufacturer T&C apply) and on specific models 10 Years.

Our Commercial Gas Technicians can service and repair your heating appliances in your Business/Commercial/School premises and several of our staff have full CRB disclosure.

Our in house design team can cater for any design or application within the commercial and domestic markets for your plumbing and heating requirements including renewable systems.

We believe in quality, reliability and our reputation as market leaders is important to our business - and letters of praise from happy clients is what we strive for.

If you are a School, College, Business, Letting Agents, Commercial Premise or Private Homeowner we can help you.

As we say – More Than Just a Service.

Call 01223 833 426 • sales@shelfordheating.co.uk • shelfordheating.co.uk



WARBURTON HOUSE

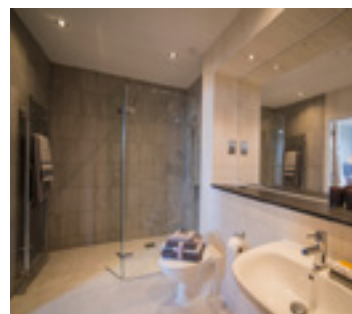
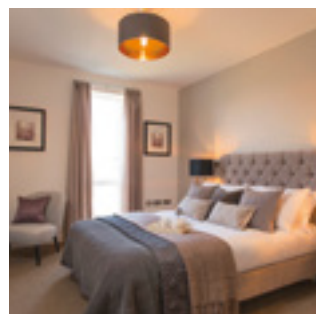
VAWSER WAY | CAMBRIDGE

LAST
FEW
REMAINING

Retirement living, made easy

Luxury self-contained
apartments offering
fantastic facilities exclusively
for those aged over 55.

Warburton House offers a stunning collection
of contemporary, high specification, two
bedroom apartments set in a beautiful
natural environment, created around
southern views of the Gog Magog Hills.



To arrange a viewing call

01223 606721

www.warburton-house.com

Sole selling agents



domovohomes.co.uk

A development by



bpha.org.uk



A night's stay on the Norfolk coast

We're once again teaming up with The Grove in Cromer to offer a one-night bed and breakfast stay for two people. It's the perfect base to use to explore the surrounding beautiful countryside.

The lucky winner can treat a friend or family member to an overnight stay at The Grove worth around £120. They will be able to choose any night apart from Saturday, or those in school holidays.

The Grove was originally built as a country retreat for the Gurney and Barclay families, who went on to form Barclays Bank. It opened to guests in 1936, when Robert and Hilda Graveling bought the property. Now, over 80 years, and three generations later, The Grove is one of Norfolk's top hotels, offering quality accommodation in bedrooms in the main house, the Orchard Rooms built in 2013, six converted barn cottages, or more recently glamping in the gardens.

The Grove has an indoor pool and a two-rosette restaurant. It has four acres of wonderful gardens with private access into woods leading straight to Cromer's beautiful cliffs and beaches.

To be in with a chance of winning this great prize, just answer the following question:

Where are we going to be working with developer Urban Splash to bring forward new Council homes, including some age-exclusive apartments for over 55s?

- a) Cottenham**
- b) Waterbeach**
- c) Northstowe**

THE GROVE
CROMER, EST.1936



You can enter the competition online at www.scambs.gov.uk – click the 'Apply for it' button and then select 'Readers' competition'.

Don't have internet access? You can enter by post. Send your name, address and telephone number, along with your answer to the question, to:

South Cambs Magazine Competition, South Cambridgeshire District Council, Cambourne Business Park, Cambourne, Cambridge, CB23 6EA

Closing date for entries is 9am on Monday 6 January.

Terms and conditions are available at www.scambs.gov.uk/t-c or can be requested by calling 03450 450 500.

Winners will be notified by Friday 10 January and announced in the spring edition of South Cambs Magazine.



Winner's spotlight

Congratulations to Laura Pullen from Longstanton who won the competition in the winter 2019 edition of South Cambs Magazine. The prize was an annual family pass to Shepreth Wildlife Park, worth more than £250. Laura said: "I can't believe I have won this brilliant prize to go to Shepreth Wildlife Park for a whole year with my family members. We have been several times in the past and very much look forward to using the pass over the next year."

adc theatre

The Deep Blue Sea, October 2019

Photo: David Swarbrick

The **ADC Theatre** is the liveliest theatre in Cambridge, presenting a vibrant programme of drama, comedy, musical theatre and new student writing.

We have helped to launch the careers of many theatre luminaries, including Sir Ian McKellen, Rachel Weisz, Emma Thompson and Stephen Fry.

view our full season at adctheatre.com

box office: 01223 300085

Cambridge University Amateur Dramatic Club

NELL GWYNN

The Olivier award-winning play by Jessica Swale tells the story of **Nell Gwynn**, seventeenth-century actress and mistress of King Charles II.
TUE 19 - SAT 23 NOVEMBER AT 7.45PM
TICKETS £9-£15

Cambridge University Amateur Dramatic Club

THE BLOODY CHAMBER

Bryony Lavery's adaptation of Angela Carter's dark fairytale is a story of seduction, perversion, blood and love.
WED 20 - SAT 23 NOVEMBER AT 11PM
TICKETS £7-£10

Cambridge University Show Choir

SEASONS OF LOVE

There are 525,600 minutes in a year, so why not spent 60 of those minutes with Cambridge's all singing, all dancing Show Choir?
MON 2 - TUE 3 DECEMBER AT 11PM
TICKETS £8-£10

Cambridge University Ballet Club

SCHEHERAZADE

This original ballet created by the Cambridge University Ballet Club adapts the Arabic folktale of a storyteller queen, set to Rimsky-Korsakov's symphonic masterpiece.
WED 4 - SAT 7 DECEMBER AT 11PM
TICKETS £6-£10

CUADC/FOOTLIGHTS PANTOMIME: RED RIDING HOOD

Join Red Riding Hood as she runs into the forest and encounters a world beyond her wildest imagination.

ADC THEATRE
WED 27 NOVEMBER - SAT 7 DECEMBER
(NOT SUN 1 DECEMBER) AT 7.45PM
MATINEES FRI 29, SAT 30 NOV; TUE 3, THU 5 & SAT 7 DECEMBER AT 2.30PM

Bawds

THE WIND IN THE WILLOWS

The beguiling charm of Kenneth Grahame's classic story and the sparkling wit of Alan Bennett's dialogue combine in this entertaining adaptation creating a delightful show for all ages.

ADC THEATRE
TUE 10 - SAT 14 DECEMBER AT 7.45PM
MATINEE SAT 14 DECEMBER AT 2.30PM
TICKETS £9-£15

Ballet Central

THE NUTCRACKER

Ballet Central returns to the ADC Theatre to perform their adaptation of the Christmas classic, **The Nutcracker**.
TUE 17 DECEMBER AT 4.30PM AND 6.30PM
WED 18 & THU 19 DECEMBER AT 2.30PM, 4.30PM AND 6.30PM
TICKETS £10

Combined Actors of Cambridge

OUR COUNTRY'S GOOD

Australia, 1789. A fleet of eleven ships containing 759 convicts sets sail for the other side of the world. The convicts are allowed to perform the first British play ever to be staged in Australia to celebrate George III's birthday.
TUE 24 - SAT 28 MARCH AT 7.45PM
TICKETS £9-£15

Bawds

BLEAK HOUSE

Bleak House is the story of the Jarndyce family, who wait in vain to inherit money from a disputed fortune in the settlement of the extremely long-running lawsuit of Jarndyce and Jarndyce.
TUE 31 MARCH - SAT 4 APRIL AT 7.45PM
TICKETS £9-£15

Pied Pipers Musical Theatre Society

GREASE

Like greased lightning, the iconic musical **Grease** thunders into the ADC Theatre this Spring. We follow summer lovers Danny and Sandy as they and their friends navigate the trials of high school, all to the unforgettable rock 'n' roll soundtrack that has defined generations.
TUE 21 - SAT 25 APRIL AT 7.45PM
MATINEE SAT 25 APRIL AT 2.30PM
TICKETS £10-£15

Great St. Mary's Church



"Prompt and helpful...
we would certainly recommend them
to other churches or individuals."

— Clare R.,
Great St Mary's Church
14 kWp generating
since May 2018

Homes in Cambridge



"Excellent,
highly recommended."

— Alberto B.,
Cambridge
2.88kWp generating
since 2017

Local Businesses

"The system has performed
over and above
what Owen predicted."

— Harry W., Think AV Studios Ltd
10 kWp generating
since 2014

cambridge·solar
since 2009



Call us anytime on 01223 863 885



Winner: British Renewable Energy
Installer of the Year, 2018



4.9 ★★★★★
85 reviews