



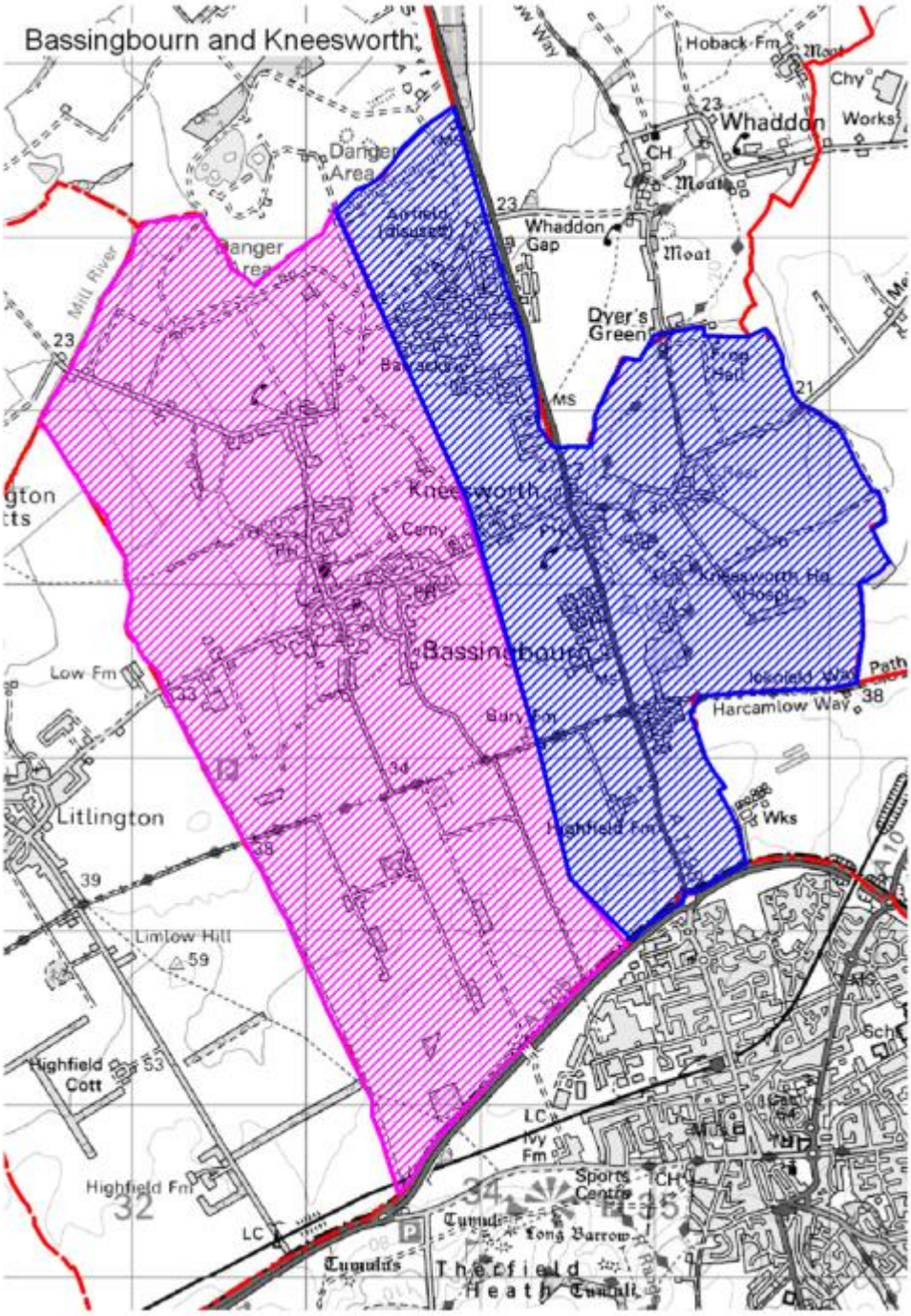
APPENDIX A

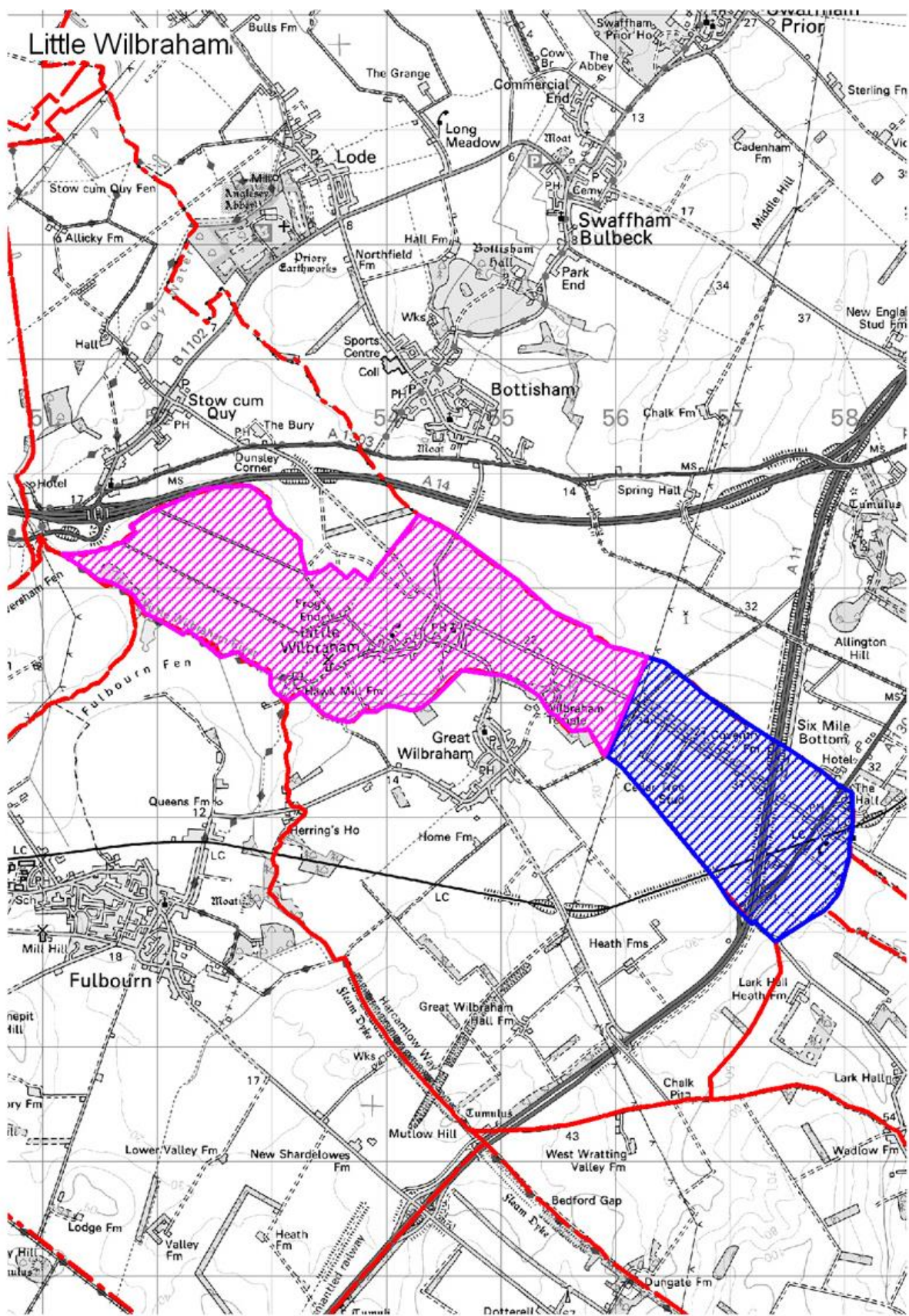
Designated Rural Settlements in South Cambridgeshire District with a Population less than 3,000 for 2019/20

All settlement boundaries are defined by the parish boundary, except those marked (*) where the parish is divided into two rural settlements as shown in the maps in appendix B.

Settlement	Settlement	Settlement
Great Abington	Fen Ditton	Steeple Morden
Little Abington	Fen Drayton	Newton
Abington Pigotts	Fowlmere	Oakington
Arrington	Foxton	Orchard Park
Babraham	Little Gransden	Orwell
Balsham	Grantchester	Over
Barrington	Graveley	Pampisford
Bartlow	Hardwick	Papworth St Agnes
Barton	Harlton	Rampton
Bassingbourn (*)	Harston	Little Shelford
Bourn	Haslingfield	Six Mile Bottom (*)
Boxworth	Hatley	Shepreth
Caldecote	Hauxton	Shingay-Cum-Wendy
Carlton	Heydon	Shudy Camps
Castle Camps	Hildersham	Stapleford
Caxton	Hinxton	Stow-Cum-Quy
Childerley	Horningsea	Swavesey
Chishill	Horseheath	Tadlow
Comberton	Ickleton	Teversham
Conington	Kingston	Thriplow
Coton	Knapwell	Toft
Croxton	Kneesworth (*)	Weston Colville
Croydon	Landbeach	West Wickham
Dry Drayton	Litlington	West Wrating
Duxford	Lolworth	Whaddon
Elsworth	Longstowe	Whittlesford
Eltisley	Madingley	Great Wilbraham
Great Eversden	Meldreth	Little Wilbraham (*)
Little Eversden	Guilden Morden	Wimpole

APPENDIX B





APPENDIX C

Villages that are Rural Settlements within the South Cambridgeshire District but have a Population of over 3,000 for 2019/20

Bar Hill

Cambourne

Cottenham

Fulbourn

Gamlingay

Girton

Histon

Impington

Linton

Longstanton

Melbourn

Milton

Papworth Everard

Sawston

Great Shelford

Waterbeach

Willingham